

Bending

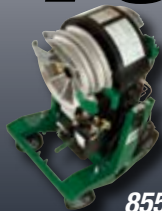
From basic hand benders to the Smart Quad Bender™ that can calculate complete layout measurements, Greenlee benders remain the industry standard. Use our bending selection guide to help you choose the right one for your job. Whether it's EMT, IMC, PVC or Rigid conduit, you know you'll bend it right – the first time – with Greenlee.

101 104 116 117

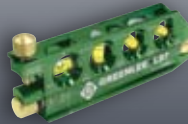
FEATURE PRODUCTS



841 Site-Rite®
Hand Bender



855 Electric
Conduit Bender



NEW
L97 Mini-Magnet
Laser Level



L77 Mini Magnetic
Bubble Level



Bending Selection Guide

Combination Bending Rigid EMT IMC Conduit

| CAT. NO. – DESCRIPTION | PAGE NO. | 1/2" | 3/4" | 1" | 1-1/4" | 1-1/2" | 2" | 2-1/2" | 3" | 3-1/2" | 4" | 5" |
|-----------------------------------|----------|------|------|----|--------|--------|----|--------|----|--------|----|----|
| 1818 Mechanical Bender (EMT) | 103 | | ✓ | ✓ | ✓ | ✓ | ✓ | | | | | |
| 1818 Mechanical Bender (IMC) | 103 | ✓ | ✓ | ✓ | ✓ | | | | | | | |
| 1818 Mechanical Bender (Rigid) | 103 | ✓ | ✓ | ✓ | ✓ | ✓ | | | | | | |
| 855 Smart Quad Bender™ | 104 | ✓ | ✓ | ✓ | ✓ | ✓ | ✓ | | | | | |
| 854 Quad Bender™ | 104 | ✓ | ✓ | ✓ | ✓ | ✓ | ✓ | | | | | |
| 555® Electric Bender Rigid & EMT* | 104, 105 | ✓ | ✓ | ✓ | ✓ | ✓ | ✓ | | | | | |
| 555® Electric Bender IMC* | 104, 105 | ✓ | ✓ | ✓ | ✓ | ✓ | ✓ | | | | | |
| 853 Quad Bender™ | 105 | | | ✓ | ✓ | ✓ | ✓ | | | | | |
| 882 & 882CB Hydraulic Bender | 108 | | | | ✓ | ✓ | ✓ | | | | | |
| 881 & 881CT Hydraulic Bender | 110 | | | | | | | ✓ | ✓ | ✓ | ✓ | |

*Correct shoe group required

Rigid Conduit Bending

| CAT. NO. – DESCRIPTION | PAGE NO. | 1/2" | 3/4" | 1" | 1-1/4" | 1-1/2" | 2" | 2-1/2" | 3" | 3-1/2" | 4" | 5" |
|---|----------|----------|------|------|--------|--------|----|--------|----|--------|----|----|
| Hand Benders—SITE-RITE® Aluminum | 101 | 841 | 842 | 843 | | | | | | | | |
| Hand Benders—SITE-RITE II® Malleable Iron | 101 | 8841 | 8842 | 8843 | | | | | | | | |
| Hand Benders—Hickeys | 101 | 508 | 512 | 516 | | | | | | | | |
| 1800 Mechanical Bender | 102 | ✓ | ✓ | ✓ | | | | | | | | |
| 1801 Mechanical Bender | 102 | | | | ✓ | ✓ | | | | | | |
| 1818 & 1818R Mechanical Bender | 103 | ✓ | ✓ | ✓ | ✓ | ✓ | | | | | | |
| 855 Smart Quad Bender™ | 104 | ✓ | ✓ | ✓ | ✓ | ✓ | ✓ | | | | | |
| 854 Quad Bender™ | 104 | ✓ | ✓ | ✓ | ✓ | ✓ | ✓ | | | | | |
| 853 Quad Bender™ | 105 | | | ✓ | ✓ | ✓ | ✓ | | | | | |
| 555R Electric Bender | 106 | ✓ | ✓ | ✓ | ✓ | ✓ | ✓ | | | | | |
| 882CB Hydraulic Bender | 108 | | | | ✓ | ✓ | ✓ | | | | | |
| 881 & 881CT Hydraulic Bender | 110 | | | | | | | ✓ | ✓ | ✓ | ✓ | |
| 880 Hydraulic Bender | 112 | Optional | | ✓ | ✓ | ✓ | ✓ | | | | | |
| 777 Hydraulic Bender | 113 | | | | ✓ | ✓ | ✓ | S | S | S | S | |
| 884 Hydraulic Bender | 114 | | | | ✓ | ✓ | ✓ | ✓ | ✓ | ✓ | ✓ | |
| 885 Hydraulic Bender | 114 | | | | ✓ | ✓ | ✓ | ✓ | ✓ | ✓ | ✓ | S |

EMT Conduit Bending

| CAT. NO. – DESCRIPTION | PAGE NO. | 1/2" | 3/4" | 1" | 1-1/4" | 1-1/2" | 2" | 2-1/2" | 3" | 3-1/2" | 4" | 5" |
|---|----------|------|------|------|--------|--------|----|--------|----|--------|----|----|
| Hand Benders—SITE-RITE® Aluminum | 101 | 840 | 841 | 842 | 843 | | | | | | | |
| Hand Benders—SITE-RITE II® Malleable Iron | 101 | 8840 | 8841 | 8842 | 8843 | | | | | | | |
| 1818 & 1818T Mechanical Bender | 103 | | ✓ | ✓ | ✓ | ✓ | ✓ | | | | | |
| 855 Smart Quad Bender™ | 104 | ✓ | ✓ | ✓ | ✓ | ✓ | ✓ | | | | | |
| 854 Quad Bender™ | 104 | ✓ | ✓ | ✓ | ✓ | ✓ | ✓ | | | | | |
| 853 Quad Bender™ | 105 | | | ✓ | ✓ | ✓ | ✓ | | | | | |
| 555E Electric Bender | 106 | ✓ | ✓ | ✓ | ✓ | ✓ | ✓ | | | | | |
| 882 & 882CB Hydraulic Bender | 108 | | | | ✓ | ✓ | ✓ | | | | | |
| 881 & 881CT Hydraulic Bender | 110 | | | | | | | ✓ | ✓ | ✓ | ✓ | |

IMC Conduit Bending

| CAT. NO. – DESCRIPTION | PAGE NO. | 1/2" | 3/4" | 1" | 1-1/4" | 1-1/2" | 2" | 2-1/2" | 3" | 3-1/2" | 4" | 5" |
|---|----------|------|------|------|--------|--------|----|--------|----|--------|----|----|
| Hand Benders—SITE-RITE® Aluminum | 101 | 841 | 842 | 843 | | | | | | | | |
| Hand Benders—SITE-RITE II® Malleable Iron | 101 | 8841 | 8842 | 8843 | | | | | | | | |
| 1800 Mechanical Bender | 102 | ✓ | ✓ | ✓ | | | | | | | | |
| 1801 Mechanical Bender | 102 | | | | ✓ | ✓ | | | | | | |
| 1818 & 1818R Mechanical Bender | 103 | ✓ | ✓ | ✓ | ✓ | ✓ | | | | | | |
| 855 Smart Quad Bender™ | 104 | ✓ | ✓ | ✓ | ✓ | ✓ | ✓ | | | | | |
| 854 Quad Bender™ | 104 | ✓ | ✓ | ✓ | ✓ | ✓ | ✓ | | | | | |
| 853 Quad Bender™ | 105 | | | ✓ | ✓ | ✓ | ✓ | | | | | |
| 555I Electric Bender | 106 | | | | | ✓ | ✓ | | | | | |
| 882CB Hydraulic Bender | 108 | | | | ✓ | ✓ | ✓ | | | | | |
| 881 & 881CT Hydraulic Bender | 110 | | | | | | | ✓ | ✓ | ✓ | ✓ | |

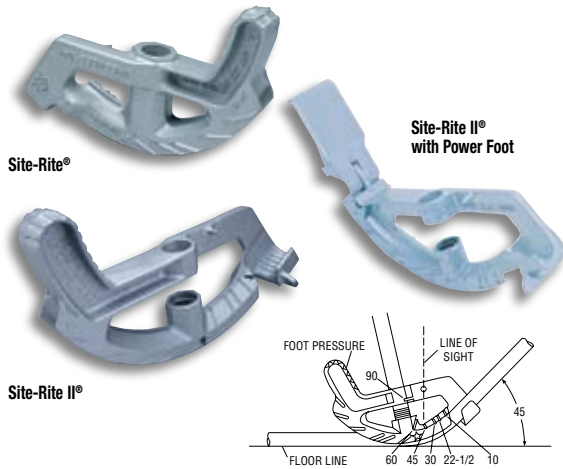
PVC Coated Rigid Conduit Bending

| CAT. NO. – DESCRIPTION | PAGE NO. | 1/2" | 3/4" | 1" | 1-1/4" | 1-1/2" | 2" | 2-1/2" | 3" | 3-1/2" | 4" | 5" |
|--|----------|-------------------------|------|----|--------|--------|----|----------|----|--------|----|----|
| 855 Smart Quad Bender™ with 01700 PVC Shoe Group | 104 | ✓ | ✓ | ✓ | ✓ | ✓ | ✓ | | | | | |
| 854 Quad Bender™ with 01700 PVC Shoe Group | 104 | ✓ | ✓ | ✓ | ✓ | ✓ | ✓ | | | | | |
| 853 Quad Bender™ with 37279 PVC Shoe Group | 105 | ✓ | ✓ | ✓ | ✓ | ✓ | ✓ | | | | | |
| 555® Electric Bender with 37279 Shoe Group | 106 | ✓ | ✓ | ✓ | ✓ | ✓ | ✓ | | | | | |
| 884 PVC Hydraulic Bender | 114 | Optional Shoes Required | | | ✓ | ✓ | ✓ | Optional | ✓ | ✓ | ✓ | |

✓ = One Shot Capability.
S = Segment Bend Only.
See pages 118 and 119 for PVC Blankets and Heaters for bending PVC.

MECHANICAL

SITE-RITE® Heat-Treated Aluminum and SITE-RITE II® Malleable Iron Hand Benders



Both Benders feature:

- Handle straight up and down for 30° bends.
- Patented sight indicator on bender is a key feature for bending angles fast and easy.
- Non-slip, contoured pedal for added leverage.
- Strong, stable square hook design.
- Cast-in markings for stub-ups, saddle bends, back-to-back bends, and head-up or down bending.
- Lifetime Limited Warranty.

SITE-RITE Aluminum Benders feature:

- Special design and heat-treated aluminum construction make this patented hand bender significantly stronger.
- Cast-in offset multipliers.

8843 SITE-RITE II Malleable Iron Bender features:

- Ratcheting Power Foot to provide more leverage, reduce bending effort.

SPECIFICATIONS

| | |
|-----------------|--|
| Capacity | 1/2" - 1/4" EMT, 1/2" - 1" Rigid |
| Weight | 840 - 1.4 lbs. (0.7 kg) 841 - 2.1 lbs. (0.9 kg) 842 - 3.5 lbs. (1.6 kg) 843 - 8.3 lbs. (3.8 kg) 840H - 5.5 lbs. (2.5 kg) 841H - 6.4 lbs. (2.9 kg) 842H - 11 lbs. (5 kg) 8840 - 3.1 lbs. (1.4 kg) 8841 - 4.3 lbs. (2.0 kg) 8842 - 7.2 lbs. (3.3 kg) 8843 - 16.2 lbs. (7.3 kg) 8840H - 7 lbs. (3.2 kg) 8841H - 9 lbs. (4.1 kg) 8842H - 15 lbs. (6.8 kg) |

CENTERLINE BENDING RADII

| EMT | RIGID IMC | CENTERLINE RADII | HEAT-TREATED ALUMINUM | MALLEABLE IRON |
|--------|-----------|--------------------|-----------------------|----------------|
| 1/2" | | 4-3/16" (106.5 mm) | 840, 840H | 8840, 8840H |
| 3/4" | 1/2" | 5-1/8" (130.2 mm) | 841, 841H | 8841, 8841H |
| 1" | 3/4" | 6-1/2" (165.1 mm) | 842, 842H | 8842, 8842H |
| 1-1/4" | 1" | 11" (279.4 mm) | 843 | — |
| 1-1/4" | 1" | 9-5/8" (244.5 mm) | — | 8843 |

CAT. NO. UPC NO. DESCRIPTION

| | | |
|-----------|-------|---|
| 840 | 23533 | SITE-RITE Hand Bender for 1/2" EMT |
| 841 | 23392 | SITE-RITE Hand Bender for 3/4" EMT, 1/2" Rigid, IMC |
| 842 | 23564 | SITE-RITE Hand Bender for 1" EMT, 3/4" Rigid, IMC |
| 843 | 23667 | SITE-RITE Hand Bender for 1-1/4" EMT, 1" Rigid, IMC |
| 840H | 32917 | SITE-RITE Hand Bender with handle for 1/2" EMT |
| 841H | 32918 | SITE-RITE Hand Bender with handle for 3/4" EMT, 1/2" Rigid |
| 842H | 32919 | SITE-RITE Hand Bender with handle for 1" EMT, 3/4" Rigid |
| 8840 | 35094 | SITE-RITE II Hand Bender for 1/2" EMT |
| 8841 | 35095 | SITE-RITE II Hand Bender for 3/4" EMT, 1/2" Rigid, IMC |
| 8842 | 35096 | SITE-RITE II Hand Bender for 1" EMT, 3/4" Rigid, IMC |
| 8843 | 35097 | SITE-RITE II Power Foot Bender for 1-1/4" EMT, 1" Rigid, IMC |
| 8840H | 35482 | SITE-RITE II Hand Bender with handle for 1/2" EMT |
| 8841H | 35483 | SITE-RITE II Hand Bender with handle for 3/4" EMT, 1/2" Rigid |
| 8842H | 35484 | SITE-RITE II Hand Bender with handle for 1" EMT, 3/4" Rigid |
| 845 | 25567 | Handle for 1/2" and 3/4" Hand Benders |
| 846 | 25568 | Handle for 1" Hand Benders |
| 846-1-1/4 | 06490 | Handle for 1-1/4" Benders |

HICKEYS with Welded Handles



- Heavy-duty cast steel head.
- Welded steel handle.
- Bend tight radius stub-ups.

CAT. NO. UPC NO. DESCRIPTION

| | | |
|-----|-------|-----------------------|
| 508 | 18102 | Hickey for 1/2" Rigid |
| 512 | 18103 | Hickey for 3/4" Rigid |
| 516 | 18104 | Hickey for 1" Rigid |

SPECIFICATIONS

| | |
|-----------------|--|
| Capacity | 1/2" - 1" Rigid |
| Weight | 508 - 6.9 lbs. (3.1 kg), 512 - 8 lbs. (3.6 kg), 516 - 13 lbs. (5.9 kg) |

Little Kicker® Offset Bender



- Bends offsets in one easy operation. Insert conduit, depress handle, release and remove conduit.
- Makes identical offsets every time for wall mounted boxes with exposed conduit.
- Creates offset that matches the knockout in box.
- Maximum offset of .56" (9/16).

| CAT. NO. | UPC NO. | DESCRIPTION |
|----------|---------|----------------------------|
| 1810 | 13815 | Offset Bender for 1/2" EMT |
| 1811 | 14159 | Offset Bender for 3/4" EMT |

SPECIFICATIONS

| | |
|-----------------|---------------------------|
| Capacity | 1810 – 1/2" EMT |
| | 1811 – 3/4" EMT |
| Weight | 1810 – 8.75 lbs. (4 kg) |
| | 1811 – 8.50 lbs. (3.9 kg) |

Mechanical Benders for IMC and Rigid Conduit



- Ratchet action for increased leverage.
- Bypass the ratchet for fast, direct bending on smaller sizes.
- Heavy-duty welded construction for long, reliable service.
- Built-in bending degree indicator and easy to use bending charts for accurate, consistent bends.
- Does not include handle.

| CAT. NO. | UPC NO. | DESCRIPTION |
|----------|---------|--|
| 1800 | 24400 | Mechanical Bender for 1/2", 3/4", 1" IMC and Rigid conduit |
| 1800G1 | 24401 | Mechanical Bender without undercarriage, for bench or truck bed mounting. Bends 1/2", 3/4", 1" IMC and Rigid conduit |
| 1801 | 24753 | Mechanical Bender for 1-1/4", 1-1/2" IMC and Rigid conduit |
| 32416 | 32416 | A Undercarriage Unit for 1800 and 1801 |
| 02289 | 02289 | B Wheel, Non-flat |

Use a 5' (1.5 m) length of 1" Rigid conduit for the handle.

SPECIFICATIONS

| | |
|-----------------|---|
| Capacity | 1800, 1800G1 – 1/2", 3/4" and 1" IMC and Rigid. |
| | 1801, 1801G1 – 1-1/4" and 1-1/2" IMC and Rigid |
| Weight | 1800 – 81 lbs. (36.7 kg) |
| | 1800G1 – 48 lbs. (21.8 kg) |
| | 1801 – 104 lbs. (47.2 kg) |
| | 1801G1 – 75 lbs. (34 kg) |

CENTERLINE BENDING RADII

| | | | |
|--------------|----------------------|----------|------------|
| 1800, 1800G1 | 1/2" Rigid conduit | 2-5/8" | (66.7 mm) |
| | 3/4" Rigid conduit | 4-5/8" | (117.5 mm) |
| | 1" Rigid conduit | 5-7/8" | (149.2 mm) |
| 1801, 1801G1 | 1-1/4" Rigid conduit | 8-1/16" | (204.8 mm) |
| | 1-1/2" Rigid conduit | 9-11/16" | (246.1 mm) |

International Tel: +1.815.397.7070
Fax: +1.815.397.9247

Canada Tel: 800.435.0786
Fax: 800.524.2853

USA Tel: 800.435.0786
Fax: 800.451.2632

Mechanical Benders for EMT, IMC, Rigid and Aluminum Conduit



- Bends a wide variety of types and sizes of conduit.
- Durable ratchet mechanism for easy bending.
- Bypass the ratchet for fast, direct bending on smaller sizes.
- Bending degree indicator and charts for fast, easy, accurate bending.
- All shoe and bending accessories can be mounted to the frame unit and secured with a chain and lock.
- Heavy-duty undercarriage with wheels.
- Does not include handle.

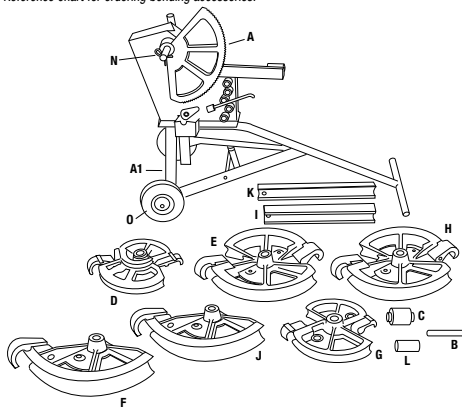
| CAT. NO. | UPC NO. | DESCRIPTION |
|----------|---------|---|
| 1818 | 22192 | Mechanical Bender for 3/4" through 2" EMT conduit, 1/2" through 1-1/4" IMC conduit and 1/2" through 1-1/2" Rigid and aluminum conduit |
| 1818R | 20231 | Mechanical Bender for 1/2" through 1-1/4" IMC conduit and 1/2" through 1-1/2" Rigid and aluminum conduit |
| 1818T | 20232 | Mechanical Bender for 3/4" through 2" EMT conduit |
| 08429 | 08429 | Under Carriage Assembly |
| 1818G1 | 22220 | A Frame and undercarriage unit only |
| 02289 | 02289 | B Wheel, Non-flat |

SPECIFICATIONS

| | |
|-----------------|---|
| Capacity | EMT: 3/4" - 2" RIGID: 1/2" - 1-1/2" IMC: 1/2" - 1-1/4" ALUMINUM: 1/2" - 1-1/2" |
| Weight | 1818 - 250 lbs. (114 kg) 1818T - 217 lbs. (99 kg) 1818R - 185 lbs. (84 kg) |

| KEY | CAT NO. | UPC NO. | DESCRIPTION | BENDERS | | | | SHOE GROUPS* | | |
|-----|---------------|----------------|---|----------|-------|-------|--------|--------------|-------|-------|
| | | | | 1818 | 1818R | 1818T | 1818G1 | 36905 | 36906 | 36907 |
| A | 36247 | 36247 | Undercarriage Unit | 1 | 1 | 1 | 1 | | | |
| B | 36697 | 36697 | Roller Pin Unit | 1 | 1 | 1 | | 1 | 1 | 1 |
| C | 18681 | 18681 | Cushioned Roller Unit | 1 | 1 | 1 | | 1 | 1 | 1 |
| D | 18827 | 18827 | 1/2, 3/4 & 1" Rigid/IMC Shoe Unit | 1 | 1 | | | 1 | 1 | |
| E | 18828 | 18828 | 1-1/4" Rigid/IMC; 1-1/2" Rigid Shoe Unit | 1 | 1 | | | 1 | 1 | |
| G | 18830 | 18830 | 3/4 & 1" EMT Shoe Unit | 1 | | 1 | | 1 | | 1 |
| H | 18831 | 18831 | 1-1/4 & 1-1/2" EMT Shoe Unit | 1 | | 1 | | 1 | | 1 |
| I | 18642 | 18642 | 1-1/4 & 1-1/2" EMT Follow Bar | 1 | | 1 | | 1 | | 1 |
| J | 18832 | 18832 | 2" EMT Shoe Unit | 1 | | 1 | | 1 | | 1 |
| K | 18636 | 18636 | 2" EMT Follow Bar | 1 | | 1 | | 1 | | 1 |
| L | 36296 | 36296 | Roller Follow Bar Guide | 1 | | 1 | | 1 | | 1 |
| N | 18772 | 18772 | Retainer Clip | 1 | 1 | 1 | | 1 | 1 | 1 |
| O | 02289 | 02289 | Wheel, Non-flat | 2 | 2 | 2 | | | | |
| F | 18829 1723 | 18829 23818 | 2" Rigid Aluminum Shoe Unit Steel Storage Box For Shoe Units | OPTIONAL | | | | | | |

* SHOE GROUPS Reference chart for ordering bending accessories.



B = REPLACEMENT PART **A** = ACCESSORY

CENTERLINE BENDING RADII

| SHOE SIZE | INCHES | mm |
|------------------|-----------|-------|
| 1/2" Rigid/IMC | 2-21/32" | 67.5 |
| 3/4" Rigid/IMC | 4-5/8" | 117.5 |
| 3/4" EMT | 5-3/32" | 129.4 |
| 1" Rigid/IMC | 5-7/8" | 149.2 |
| 1" EMT | 6-13/32" | 162.7 |
| 1-1/4" Rigid/IMC | 7-3/8" | 187.3 |
| 1-1/4" EMT | 8-9/32" | 210.3 |
| 1-1/2" Rigid | 9" | 228.6 |
| 1-1/2" EMT | 8-9/32" | 210.3 |
| 2" EMT | 9-3/16" | 233.4 |
| 2" Aluminum | 10-15/32" | 265.9 |

ELECTRICAL

Smart Quad Bender™ Electric Conduit Bender for 1/2" to 2" EMT, IMC, Rigid and Rigid Aluminum



- Bends a variety of types and sizes of conduit.
- Intelligent pendant controls: Standard (included), digital readout and programmable bend angles for accurate repeat bends. Deluxe (optional), interactive control – calculates complete layout measurements for various types of bends.
- Bends 1/2" to 2" EMT, IMC, Rigid and Rigid aluminum conduit without any shoe changes. No loose parts to get lost.
- Two operating positions; table top and upright.
- Optional shoes available to bend PVC-coated steel conduit.
- Adjustable leveler pads.
- Excellent portability. Convenient lifting eyes.
- Weather-resistant construction.
- Squeeze adjustment to compensate for variations in EMT conduit.

SPECIFICATIONS

| | |
|---------------------|--|
| Capacity | 1/2" - 2" EMT, IMC, Rigid and Rigid Aluminum conduit |
| Power Source | 120 VAC; 20 Amp |
| Weight | 510 lbs. (231.3 kg) |

| CAT. NO. | UPC NO. | DESCRIPTION |
|----------|---------|---|
| 855 | 08550 | Smart Bender for 1/2" - 2" EMT, IMC and Rigid conduit (Includes Standard Pendant) |
| 38650 | 38650 | A Deluxe Pendant for older bender with serial code ZW |
| 01711 | 01711 | A Deluxe Pendant for current bender with serial code ABL & ADY |
| 38863 | 38863 | R Standard Pendant for older bender with serial code ZW |
| 01648 | 01648 | R Standard Pendant for current bender with serial code ABL & ADY |
| 38780 | 38780 | R Shoe Unit, 1/2" - 1-1/4" |
| 38148 | 38148 | R Shoe Unit, 1-1/2" - 2" |
| 01700 | 01700 | A 40 MIL PVC Coated Rigid Shoe Group, 1/2"-2" (Exc. ZW) |
| 38962 | 38962 | A Vinyl Rain Cover |

Quad Bender™ Electric Conduit Bender for 1/2" to 2" EMT, IMC, and Rigid Aluminum



- Bends 1/2" to 2" EMT, IMC, Rigid and Rigid Aluminum conduit without any shoe changes. No loose parts to get lost.
- Two operating positions; tabletop and upright.
- Remote pendant switch and bending data charts for easy, accurate bends.
- Simple setup and easy operation.
- Squeeze adjustment to compensate for variations in EMT conduit.
- Adjustable leveler pads.
- Excellent portability. Convenient lifting eyes.
- Optional shoes available to bend PVC coated steel conduit.

| CAT. NO. | UPC NO. | DESCRIPTION |
|----------|---------|---|
| 854 | 03106 | Quad Bender for 1/2" - 2" EMT, IMC, Rigid and Rigid Aluminum, conduit |
| 38780 | 38780 | R Shoe Unit, 1/2" - 1-1/4" |
| 38148 | 38148 | R Shoe Unit, 1-1/2" - 2" |
| 01700 | 01700 | A 40 MIL PVC Coated Rigid Shoe Group, 1/2"-2" |

SPECIFICATIONS

| | |
|---------------------|--|
| Capacity | 1/2" - 2" EMT, IMC, Rigid and Rigid Aluminum conduit |
| Power Source | 120 VAC; 20 Amp |
| Weight | 510 lbs. (231.3 kg) |

CENTERLINE BENDING RADII

| SHOE SIZE | INCHES | mm | SHOE SIZE | INCHES | mm | SHOE SIZE | INCHES | mm |
|----------------|---------|-------|------------------|----------|-------|------------------|--------|-------|
| 1/2" EMT | 4-5/16" | 109.5 | 1" EMT | 7" | 177.8 | 1-1/2" EMT | 8-3/8" | 212.7 |
| 1/2" IMC/Rigid | 4-1/4" | 108.0 | 1" IMC/Rigid | 6-15/16" | 176.2 | 1-1/2" IMC/Rigid | 8-1/4" | 209.6 |
| 3/4" EMT | 5-1/2" | 139.7 | 1-1/4" EMT | 8-13/16" | 223.8 | 2" EMT | 9-1/4" | 235.0 |
| 3/4" IMC/Rigid | 5-7/16" | 138.1 | 1-1/4" IMC/Rigid | 8-3/4" | 222.3 | 2" IMC/Rigid | 9" | 228.6 |

R = REPLACEMENT PART **A** = ACCESSORY

Electric Conduit Bender for 1" to 2" EMT, IMC, Rigid Steel and Aluminum



- Four-in-one-shoe handles 1", 1-1/4", 1-1/2", 2" EMT, IMC and Rigid steel and aluminum conduit.
- No flat tires with steel rims and precision ball bearings for tough jobsite conditions.
- Quickly remove the shoe and bridge to reduce weight for easy handling.
- Easy to load and unload.
- Squeeze adjustment to compensate for conduit variations. Smooth wrinkle-free bends.

| CAT. NO. | UPC NO. | DESCRIPTION |
|----------|----------------|---|
| 853 | 07272 | Quad Bender for 1" - 2" EMT, IMC, and Rigid conduit |
| 37279 | 37279 A | 40 MIL PVC Coated Rigid Shoe Group, 1"-2" |

SPECIFICATIONS

| | |
|---------------------|--|
| Capacity | 1" - 2" EMT, IMC, and Rigid conduit |
| Power Source | 120 VAC; 20 Amp |
| Weight | 445 lbs. (202 kg); 275 lbs. (125 kg) without shoe and bridge |
| Height | 44" (1118 mm) |
| Width | 30.5" (775 mm) |
| Depth | 35" (889 mm) |

CENTERLINE BENDING RADII-853

| SHOE SIZE | INCHES | mm |
|------------------|----------|-------|
| 1" EMT | 7" | 177.8 |
| 1" IMC/Rigid | 6-15/16" | 176.2 |
| 1-1/4" EMT | 8-13/16" | 223.8 |
| 1-1/4" IMC/Rigid | 8-3/4" | 222.3 |
| 1-1/2" EMT | 8-3/8" | 212.7 |
| 1-1/2" IMC/Rigid | 8-1/4" | 209.6 |
| 2" EMT | 9-1/4" | 235.0 |
| 2" IMC/Rigid | 9" | 228.6 |

Bending

USA Tel: 800.435.0786
Fax: 800.451.2632

Canada Tel: 800.435.0786
Fax: 800.524.2853

International Tel: +1.815.397.7070
Fax: +1.815.397.9247

555® Deluxe Electric Conduit Bender for 1/2" through 2" Conduit and Pipe



Pneumatic Tires



- 555 Deluxe Series features unique electrical controls that reduce the in-rush current to the relays to minimize contact arcing for longer life, heavy-duty no flat pneumatic tires and UL/ULC approved.
- Available in four models for Rigid, EMT or IMC conduit, or bender only without shoes.
- The optional PVC-coated Rigid conduit shoe group can be used on all 555 series benders.

| CAT. NO. | UPC NO. | DESCRIPTION |
|----------|---------|---|
| 555 | 39780 | Deluxe Electric Bender power unit without bending accessories |
| 555R | 23446 | Deluxe Electric Bender with Shoe Group for 1/2" through 2" Rigid and 1/2" through 1-1/4" IMC conduit and pipe includes 28007 - 1/2" - 2" Rigid Shoe Group |
| 555E | 27989 | Deluxe Electric Bender with Shoe Group for 1/2" through 2" EMT conduit includes 23802 - 1/2" - 2" EMT Shoe Group |
| 555I | 27990 | Deluxe Electric Bender with Shoe Group for 1-1/2" through 2" IMC conduit includes 26330 - 1-1/2" - 2" IMC Shoe Group |
| 555-22 | 39971 | 220 VAC 50/60 Cycle Electric Bender power unit without bending accessories |
| 37279 | 37279 | A 40 MIL PVC Coated Rigid 1/2" - 2" Shoe Group (sold separately) to use with the 555 series benders |

SPECIFICATIONS

| | |
|------------------------------|---|
| Capacity | 555R: 1/2" - 2" Rigid and 1/2" - 1-1/4" IMC conduit 555E: 1/2" - 2" EMT conduit 555I: 1-1/2" and 2" IMC conduit |
| Power Source | 555 Deluxe Series: 120 VAC; 20 Amp GFCI-protected receptacle 555-22: 220 VAC 50/60 Cycle; 20 Amp GFCI-protected receptacle |
| Operating Temperature | -5° F to 120° F (-20° C to 49° C) |
| Relative Humidity | 0-98% |
| Weight | 555: 260 lbs. (118 kg) 555R: 393 lbs. (179 kg) 555E: 476 lbs. (216 kg) 555I: 456 lbs. (207 kg) |
| Height | 555 Deluxe Series: 44" (1118 mm) |
| Width | 555 Deluxe Series: 29-5/8" (753 mm) |
| Depth | 555 Deluxe Series: 28-1/2" (724 mm) |

International Tel: +1.815.397.7070
Fax: +1.815.397.9247

Canada Tel: 800.435.0786
Fax: 800.524.2853

USA Tel: 800.435.0786
Fax: 800.451.2632

555® Classic Electric Conduit Bender for 1/2" through 2" Conduit and Pipe



555RC Classic

- The 555C Classic Series features simple relay controls for easy field repairs, and compact handle design to prevent interference with conduit when bending.
- Available in four models for Rigid, EMT or IMC conduit, or bender only without shoes.
- The optional PVC-coated Rigid conduit shoe group can be used on all 555 series benders.

| CAT. NO. | UPC NO. | DESCRIPTION |
|----------|----------------|---|
| 555C | 06900 | Classic Electric Bender power unit without bending accessories |
| 555RC | 06901 | Classic Electric Bender with Shoe Group for 1/2" through 2" Rigid and 1/2" through 1-1/4" IMC conduit and pipe; includes 28007 – 1/2" - 2" Rigid Shoe Group |
| 555EC | 06902 | Classic Electric Bender with Shoe Group for 1/2" through 2" EMT conduit includes 23802 – 1/2" - 2" EMT Shoe Group |
| 555C | 06903 | Classic Electric Bender with Shoe Group for 1-1/2" through 2" IMC conduit includes 26330 – 1-1/2" - 2" IMC Shoe Group |
| 37279 | 37279 A | 40 MIL PVC Coated Rigid 1/2" - 2" Shoe Group (sold separately) to use with the 555 series benders |

SPECIFICATIONS

| | |
|------------------------------|---|
| Capacity | 555RC: 1/2" - 2" Rigid and 1/2" - 1-1/4" IMC conduit 555EC: 1/2" - 2" EMT conduit 555C: 1-1/2" and 2" IMC conduit |
| Power Source | 555C Classic Series: 120 VAC; 20 amp GFCI-protected receptacle |
| Weight | 555C: 260 lbs. (118 kg) |
| Width | 555C Classic Series: 28-1/2" (724 mm) |
| Height | 555C Classic Series: 44" (1118 mm) |
| Depth | 555C Classic Series: 28-1/2" (724 mm) |
| Operating Temperature | -5° F to 120° F (-20° C to 49° C) |
| Relative Humidity | 0-98% |

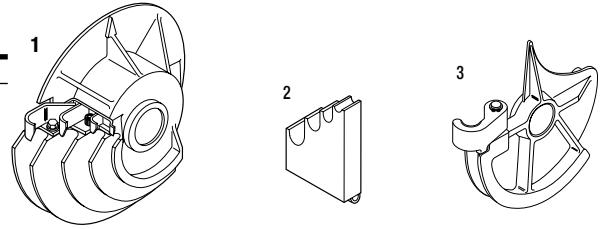
555 CENTERLINE BENDING RADII

| SHOE SIZE | EMT | RIGID | IMC |
|-----------|--------------------|------------------|------------------|
| 1/2" | 4-1/4" (10.80 cm) | 4-1/4" (108 mm) | 4-1/4" (108 mm) |
| 3/4" | 5-3/8" (13.65 cm) | 5-7/16" (138 mm) | 5-7/16" (138 mm) |
| 1" | 6-3/4" (17.15 cm) | 6-5/16" (176 mm) | 6-5/16" (176 mm) |
| 1-1/4" | 8-3/4" (22.22 cm) | 8-3/4" (222 mm) | 8-3/4" (222 mm) |
| 1-1/2" | 8-9/32" (21.03 cm) | 8-1/4" (209 mm) | 8-9/32" (210 mm) |
| 2" | 9-3/16" (23.33 cm) | 9-1/2" (241 mm) | 9-3/16" (233 mm) |

555® Accessory Shoe Groups

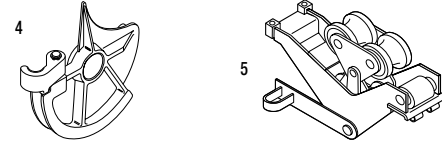
23802 1/2" - 2" EMT SHOE GROUP CONSISTS OF ONE EACH:

| KEY | CAT. NO. | UPC NO. | DESCRIPTION |
|-----|----------|---------|---------------------------------------|
| 1 | 17944 | 17944 | 1/2" through 1-1/4" EMT Bending Shoe |
| 2 | 17986 | 17986 | 1/2" through 1-1/4" Support Roller |
| 3 | 23499 | 23499 | 1-1/2" EMT Bending Shoe |
| 4 | 23505 | 23505 | 2" EMT Bending Shoe |
| 5 | 23541 | 23541 | 1-1/2" through 2" Roller Support Unit |
| | 1723 | 23818 | Metal Storage Box (not shown) |



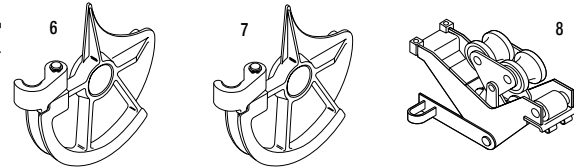
23816 1-1/2" AND 2" EMT SHOE GROUP CONSISTS OF ONE EACH:

| KEY | CAT. NO. | UPC NO. | DESCRIPTION |
|-----|----------|---------|---------------------------------------|
| 3 | 23499 | 23499 | 1-1/2" EMT Bending Shoe |
| 4 | 23505 | 23505 | 2" EMT Bending Shoe |
| 5 | 23541 | 23541 | 1-1/2" through 2" Roller Support Unit |



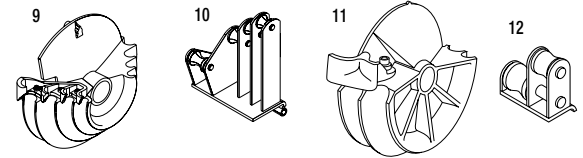
26330 1-1/2" AND 2" IMC SHOE GROUP CONSISTS OF ONE EACH:

| KEY | CAT. NO. | UPC NO. | DESCRIPTION |
|-----|----------|---------|---------------------------------------|
| 6 | 25263 | 25263 | 1-1/2" IMC Bending Shoe |
| 7 | 25268 | 25268 | 2" IMC Bending Shoe |
| 8 | 25273 | 25273 | 1-1/2" through 2" Roller Support Unit |
| | 1723 | 23818 | Metal Storage Box (not shown) |



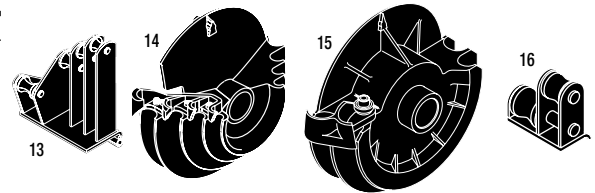
28007 1/2" - 2" RIGID SHOE GROUP CONSISTS OF ONE EACH:

| KEY | CAT. NO. | UPC NO. | DESCRIPTION |
|-----|----------|---------|--|
| 9 | 00571 | 00571 | 1/2" through 1-1/4" Rigid/IMC Bending Shoe |
| 10 | 00936 | 00936 | 1/2" through 1-1/4" Support Roller |
| 11 | 17937 | 17937 | 1-1/2" through 2" Rigid Bending Shoe |
| 12 | 17984 | 17984 | 1-1/2" through 2" Support Roller |



37279 40 MIL PVC COATED RIGID 1/2" - 2" SHOE GROUP CONSISTS OF ONE EACH:

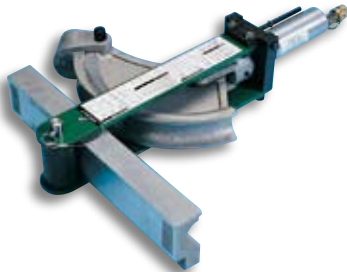
| KEY | CAT. NO. | UPC NO. | DESCRIPTION |
|-----|----------|---------|------------------------------------|
| 13 | 00946 | 00946 | 1/2" through 1-1/4" Roller Support |
| 14 | 00573 | 00573 | 1/2" through 1-1/4" Shoe |
| 15 | 37281 | 37281 | 1-1/2" and 2" Shoe |
| 16 | 37282 | 37282 | 1-1/2" through 2" Roller Support |
| | 1723 | 23818 | Metal Storage Box (not shown) |



To use the PVC Shoe Group with 555 SB and 555 SBR benders Adapter Set 32391 is required.

HYDRAULIC

Flip-Top® Benders for 1-1/4" - 2" EMT, IMC and Rigid



- Choose 882 for EMT or 882CB models for EMT, IMC and Rigid Conduit.
- Simple, accurate and easy to use.
- Flip-Top hinged frame top plate opens for easy, fast loading and unloading.
- Ram travel scale and charts for accurate bends, offsets and saddles.

FLIP-TOP® BENDER CENTERLINE BENDING RADII

| SIZE | 882, 882CB | | 882CB | |
|--------|--------------------|-------------------|-------------------|-----|
| | EMT | RIGID | EMT | IMC |
| 1-1/4" | 7-7/32" (183.4 mm) | 7-1/4" (184.2 mm) | 7-1/4" (184.2 mm) | |
| 1-1/2" | 8-1/16" (204.8 mm) | 8-1/4" (209.5 mm) | 8-1/4" (209.5 mm) | |
| 2" | 9-5/16" (236.5 mm) | 8-7/8" (225.4 mm) | 8-7/8" (225.4 mm) | |

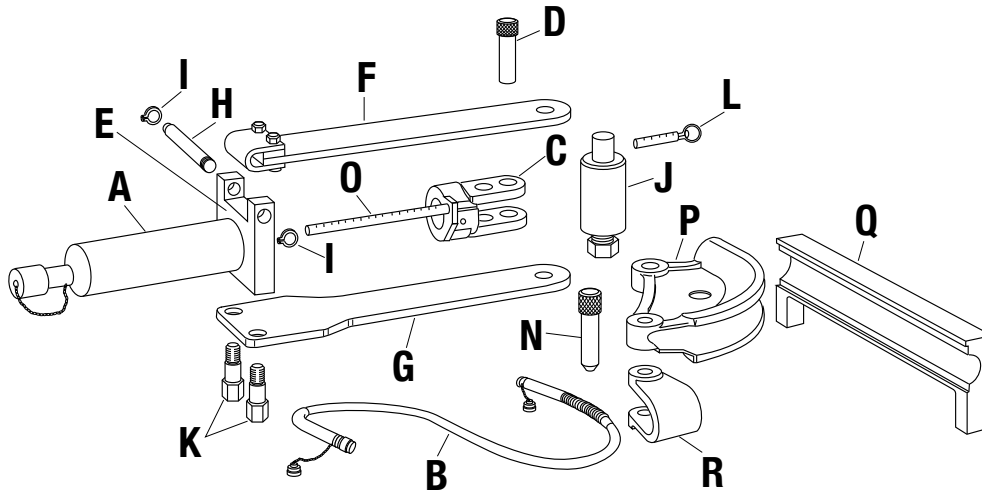
| CAT. NO. | UPC NO. | DESCRIPTION |
|------------|---------|--|
| 882 | 15128 | Flip-Top Bender for 1-1/4", 1-1/2" and 2" EMT Conduit without Hydraulic Pump |
| 882CB | 29536 | Flip-Top Bender with shoes for 1-1/4", 1-1/2" and 2" EMT, IMC and Rigid Conduit without Hydraulic Pump |
| 882CB-H755 | 29537 | Flip-Top Bender with shoes for 1-1/4", 1-1/2" and 2" EMT, IMC and Rigid Conduit with 755 Hand Hydraulic Pump |
| 882CB-E975 | 34202 | Flip-Top Bender with shoes for 1-1/4", 1-1/2" and 2" EMT, IMC and Rigid Conduit with 975 Electric Hydraulic Pump |
| 882-H755 | 16460 | Flip-Top Bender for 1-1/4", 1-1/2" and 2" EMT Conduit with 755 Hand Hydraulic Pump |
| 882-E975 | 34201 | Flip-Top Bender for 1-1/4", 1-1/2" and 2" EMT Conduit with 975 Electric Hydraulic Pump |
| 882RI-G1 | 29948 | Conversion Attachment Set - Converts 882 to 882CB by adding the shoes, follow bars and saddles for 1-1/4", 1-1/2" and 2" IMC and Rigid Conduit |

SPECIFICATIONS

| Capacity | Weight |
|---|------------------------------|
| 882-1-1/4", 1-1/2" and 2" EMT | 882-141 lbs (64 kg) |
| 882CB-1-1/4", 1-1/2" and 2" EMT, IMC and Rigid | 882-H755- 161 lbs (73 kg) |
| Power Source | 882CB-H755- 217 lbs (99 kg) |
| 755- Hydraulic Hand Pump | 882CB-E975- 264 lbs (120 kg) |
| 975- 120 VAC Electric Hydraulic Pump | 882-E975- 195 lbs (89 kg) |
| 976- 220PS- 220 VAC 50/60 Cycle Electric Hydraulic Pump | 882CB- 205 lbs (93 kg) |

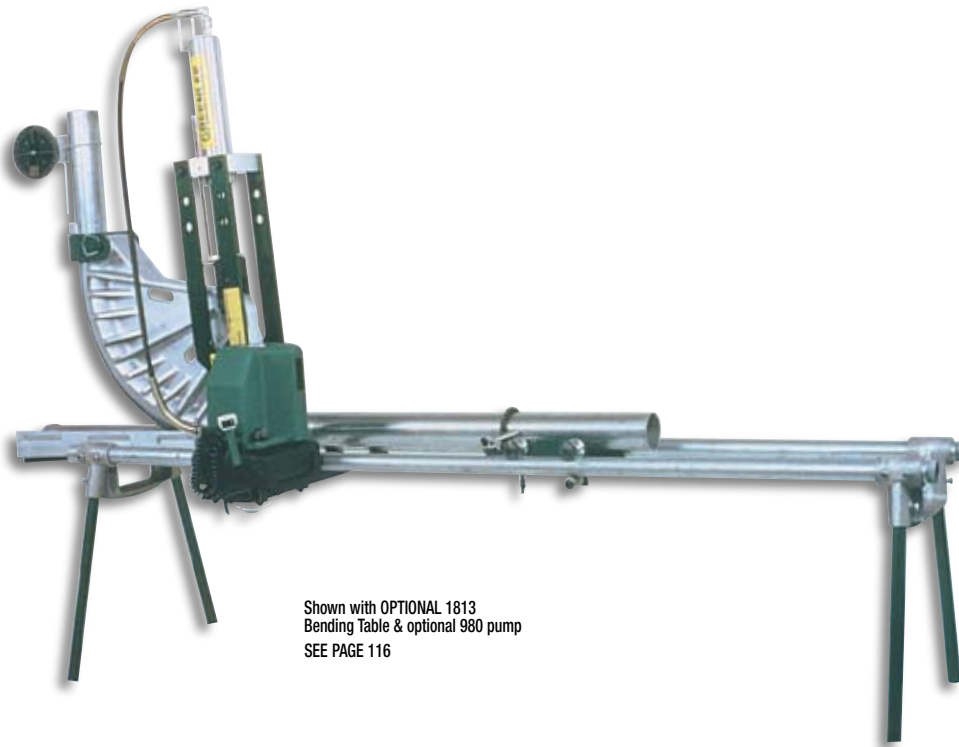
R = REPLACEMENT PART A = ACCESSORY

Flip-Top® Benders and Shoe Groups



| KEY | CAT NO. | UPC NO. | DESCRIPTION | BENDERS | | SHOE GROUP |
|-----|---------|---------|--|---------|-------|------------|
| | | | | 882 | 882CB | 882RI-G1 |
| A | 1738 | 15129 | 12-Ton Hydraulic Ram with 4018GB female quick Coupler | 1 | 1 | |
| B | 11289 | 11289 | 3/8" x 6' (9.5 x 1829 mm) Hydraulic Hose with two 4033GB male quick couplers | 1 | 1 | |
| C | 15145 | 15145 | Yoke | 1 | 1 | |
| D | 04086 | 04086 | Yoke Pin | 1 | 1 | |
| E | 16563 | 16563 | Frame Unit (includes F thru K) | 1 | 1 | |
| F | 15136 | 15136 | Upper Connecting Plate Unit | 1 | 1 | |
| G | 15135 | 15135 | Lower Connecting Plate Unit | 1 | 1 | |
| H | 15150 | 15150 | Hinge Pin | 1 | 1 | |
| I | 50283 | 50283 | Retaining Ring | 2 | 2 | |
| J | 38778 | 38778 | Roller Unit with pin (L) | 1 | 1 | |
| K | 15147 | 15147 | Anchor Stud | 2 | 2 | |
| L | 54303 | 54303 | Hitch Pin, 3/8 x 1-1/2 | 1 | 1 | |
| N | 29937 | 29937 | Saddle Pin | 1 | 1 | 1 |
| O | 50848 | 50848 | Scale Jam Nut | | | |
| O | 52867 | 52867 | Scale O-Ring | | | |
| O | 21954 | 21954 | Scale Piston | 1 | 1 | |
| | 1531 | 23274 | Steel Storage Box (not shown) | 1 | 1 | |
| P | 11146 | 11146 | 1-1/4" EMT Shoe | 1 | 1 | |
| Q | 11126 | 11126 | 1-1/4" EMT Follow Bar | 1 | 1 | |
| R | 11075 | 11075 | 1-1/4" EMT Saddle | 1 | 1 | |
| P | 14287 | 14287 | 1-1/2" EMT Shoe | 1 | 1 | |
| Q | 11107 | 11107 | 1-1/2" EMT Follow Bar | 1 | 1 | |
| R | 11072 | 11072 | 1-1/2" EMT Saddle | 1 | 1 | |
| P | 11132 | 11132 | 2" EMT Shoe | 1 | 1 | |
| Q | 11089 | 11089 | 2" EMT Follow Bar | 1 | 1 | |
| R | 14279 | 14279 | 2" EMT Saddle | 1 | 1 | |
| P | 29474 | 29474 | 1-1/4" IMC and Rigid Shoe | | 1 | 1 |
| Q | 29477 | 29477 | 1-1/4" IMC and Rigid Follow Bar | | 1 | 1 |
| R | 29465 | 29465 | 1-1/4" IMC and Rigid Saddle | | 1 | 1 |
| P | 29470 | 29470 | 1-1/2" IMC and Rigid Shoe | | 1 | 1 |
| Q | 29472 | 29472 | 1-1/2" IMC and Rigid Follow Bar | | 1 | 1 |
| R | 29464 | 29464 | 1-1/2" IMC and Rigid Saddle | | 1 | 1 |
| P | 29466 | 29466 | 2" IMC and Rigid Shoe | | 1 | 1 |
| Q | 29468 | 29468 | 2" IMC and Rigid Follow Bar | | 1 | 1 |
| R | 29463 | 29463 | 2" IMC and Rigid Saddle | | 1 | 1 |

Cam Track® Conduit Benders for 2-1/2" to 4" EMT, IMC and Rigid



Shown with OPTIONAL 1813 Bending Table & optional 980 pump
SEE PAGE 116

| CAT. NO. | UPC NO. | DESCRIPTION |
|-------------|---------|--|
| 881CT | 31287 | Cam Track Conduit Bender for One-Shot 90° Bends in 2-1/2", 3", 3-1/2" and 4" EMT, IMC and Rigid conduit, without hydraulic pump |
| 881CT-E980 | 34208 | Cam Track Conduit Bender for One-Shot 90° Bends in 2-1/2", 3", 3-1/2" and 4" EMT, IMC and Rigid conduit, with 980 Electric Hydraulic Pump |
| 881CTD | 38466 | Cam Track Conduit Bender for One-Shot 90° Bends in 2-1/2", 3" and 4" EMT, IMC and Rigid conduit, without hydraulic pump |
| 881CTD-E980 | 38467 | Cam Track Conduit Bender for One-Shot 90° Bends in 2-1/2", 3" and 4" EMT, IMC and Rigid conduit, with 980 Electric Hydraulic Pump |
| 881 | 27778 | Conduit Bender for One-Shot 90° Bends in 2-1/2" and 3", Two-Shot 90° Bends in 3-1/2" and 4" EMT, IMC and Rigid conduit, without hydraulic pump |
| 881-E980 | 34205 | Hydraulic Conduit Bender for One-Shot 90° Bends in 2-1/2" and 3", Two-Shot 90° Bends in 3-1/2" and 4" EMT, IMC and Rigid conduit, with 980 Electric Hydraulic Pump |
| 881 Basic | 35711 | Conduit Bender without shoe groups or hydraulic pump |
| 27554 | 27554 | A 2-1/2" - One-Shot 90° EMT, IMC, Rigid Shoe Group |
| 27555 | 27555 | A 3" - One-Shot 90° EMT, IMC, Rigid Shoe Group |
| 31281 | 31281 | A 3-1/2" - One-Shot 90° EMT, IMC, Rigid Shoe Group |
| 27556 | 27556 | A 3-1/2" - 45° EMT, IMC, Rigid Shoe Group (requires 2 bends to make a 90°) |
| 31274 | 31274 | A 4" - One-Shot 90° EMT, IMC, Rigid Shoe Group |
| 27557 | 27557 | A 4" - 45° EMT, IMC, Rigid Shoe Group (requires 2 bends to make a 90°) |
| 1813 | 28901 | A Bending Table for 881 Bender |

- One bender to bend EMT, IMC and Rigid Conduit.
- Fast and easy setup on the jobsite.
- True One-Shot 90° bends with CT models for quick accurate bends.
- Steel reinforced follow bars for long life.
- Bend a 90° elbow in 4" Rigid conduit in 95 seconds.
- Optional 1813 Bending Table and accessories for easier operation.

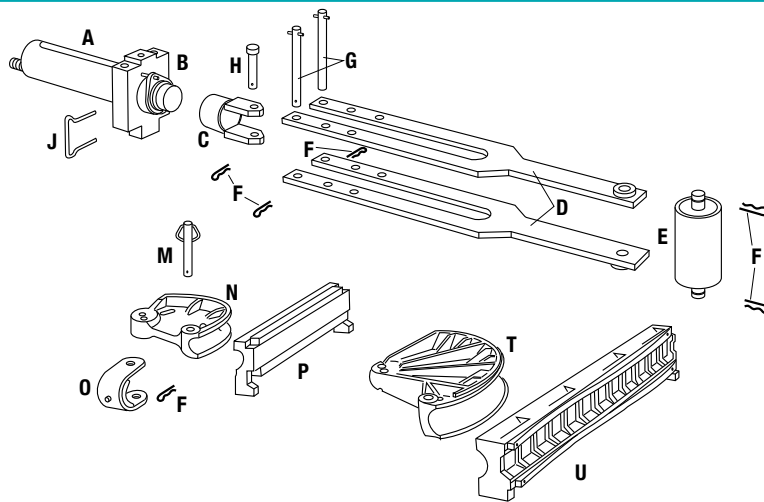
SPECIFICATIONS

| | |
|---------------------|--|
| Capacity | 2-1/2" - 4" EMT, IMC and Rigid |
| Power Source | 980: 120 VAC Electric Powered Hydraulic Pump 980-22PS: 220 VAC 50/60 Cycle Electric Powered Hydraulic Pump |
| Weight | 881CT-E980: 999 lbs. (454 kg) 881-E980: 930 lbs. (422 kg) 881: 856 lbs. (388 kg) 881 BASIC: 358 lbs. (163 kg) 27555: 137 lbs. (62 kg) 27556: 130 lbs. (59 kg) 27557: 134 lbs. (61 kg) 31274: 183 lbs. (83 kg) |

CAM TRACK® BENDER CENTERLINE BENDING RADII FOR EMT, IMC AND RIGID CONDUIT

| SIZE | 881 | 881 CT, 881 CTD, 881 BASIC | | |
|--------|--------------------|----------------------------|------------|----------------|
| | CENTERLINE RADIUS | CENTERLINE RADIUS | SHOE GROUP | DEGREE OF BEND |
| 2-1/2" | 13-1/2" (342.9 mm) | 13-1/2" (342.9 mm) | 27554 | 90 |
| 3" | 16" (406.4 mm) | 16" (406.4 mm) | 27555 | 90 |
| 3-1/2" | 18-5/8" (473.1 mm) | 18-5/8" (473.1 mm) | 31281 | 90 |
| 4" | 21" (533.4 mm) | 20-7/8" (530.2 mm) | 31274 | 90 |
| 3-1/2" | | 18-5/8" (473.1 mm)# | 27556 | 45 |
| 4" | | 21" (533.4 mm)# | 27557 | 45 |
| | | # 881 Basic Only | | |

Cam Track® Benders and Shoe Groups



| KEY | CAT. NO. | UPC NO. | DESCRIPTION | BENDERS | | | SHOE GROUPS | | | | | | | | |
|-----|----------|---------|--|---------|----------|----------------|-------------|-------|-------|-------|-------|-------|---|---|---|
| | | | | 881 | 881BASIC | 881CT & 881CTD | 27554 | 27555 | 31281 | 27556 | 31274 | 27557 | | | |
| A | 27416 | 27416 | 40-Ton Hydraulic Ram with 4018GB female quick coupler. The ram includes Keys B, G, and two clips from Key F. | 1 | 1 | 1 | | | | | | | | | |
| B | 27417 | 27417 | Cylinder Block | 1 | 1 | 1 | | | | | | | | | |
| C | 30309 | 30309 | Yoke | 1 | 1 | 1 | | | | | | | | | |
| D | 26309 | 26309 | Connecting Bar Unit | 2 | 2 | 2 | | | | | | | | | |
| E | 27364 | 27364 | Roller Unit-The roller unit includes two clips from Key F | 1 | 1 | 1 | | | | | | | | | |
| F | 50302 | 50302 | Hitch Pin Clips | 6 | 6 | 6 | | | | | | | | | |
| G | 27381 | 27381 | Cylinder Block Pin Unit | 2 | 2 | 2 | | | | | | | | | |
| H | 26306 | 26306 | Yoke Pin | 1 | 1 | 1 | | | | | | | | | |
| J | 26349 | 26349 | Spring Clip (secures Yoke Unit to Ram) | 1 | 1 | 1 | | | | | | | | | |
| | 11289 | 11289 | 3/8" x 6' (9.5 x 1829 mm) Hydraulic Hose with two 4033GB male quick couplers | 1 | 1 | 1 | | | | | | | | | |
| M | 26624 | 26624 | Saddle Pin Unit - includes 1 clip from Key F | 1 | 1 | 1 | | | | | | | | | |
| N | 26297 | 26297 | 2-1/2" Shoe 90° | 1 | | 1 | 1 | | | | | | | | |
| P | 26366 | 26366 | 2-1/2" Follow Bar 90° | 1 | | 1 | 1 | | | | | | | | |
| O | 26580 | 26580 | 2-1/2" Saddle | 1 | | 1 | 1 | | | | | | | | |
| N | 26300 | 26300 | 3" Shoe 90° | 1 | | 1 | | 1 | | | | | | | |
| P | 35400 | 35400 | 3" Follow Bar 90° | 1 | | 1 | | 1 | | | | | | | |
| O | 26584 | 26584 | 3" Saddle | 1 | | 1 | | 1 | 1 | | | | | | |
| N | 26302 | 26302 | 3-1/2" Shoe 45° | 1 | | | | | | 1 | | | | | |
| P | 26389 | 26389 | 3-1/2" Follow Bar 45° | 1 | | | | | | 1 | | | | | |
| O | 26588 | 26588 | 3-1/2" Saddle | 1 | | 1* | | | 1 | 1 | | | | | |
| T | 31882 | 31882 | 3-1/2" Shoe 90° | | | 1* | | | 1 | | | | | | |
| U | 31881 | 31881 | 3-1/2" Follow Bar 90° | | | 1* | | | 1 | | | | | | |
| N | 26305 | 26305 | 4" Shoe 45° | 1 | | | | | | | | | | | 1 |
| P | 31292 | 31292 | 4" Follow Bar 45° | 1 | | | | | | | | | | | 1 |
| O | 26594 | 26594 | 4" Saddle | 1 | | 1 | | | | | | 1 | | 1 | |
| T | 31884 | 31884 | 4" Shoe 90° | | | 1 | | | | | | | 1 | | |
| U | 31883 | 31883 | 4" Follow Bar 90° | | | 1 | | | | | | | 1 | | |
| | 2460 | 23363 | Steel Storage Box (not shown) | 1 | 1 | 1 | | | | | | | | | |
| | 695 | 30239 | Caster Set (not shown) | 1 | 1 | 1 | | | | | | | | | |

*Not included in 881 CTD.

R = REPLACEMENT PART **A** = ACCESSORY

Bending

USA Tel: 800.435.0786
Fax: 800.451.2632

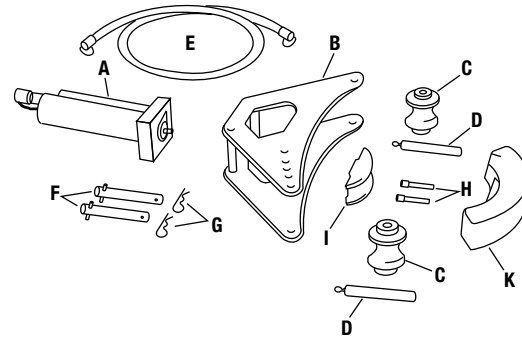
Canada Tel: 800.435.0786
Fax: 800.524.2853

International Tel: +1.815.397.7070
Fax: +1.815.397.9247

Rigid Conduit Bender for 1/2", 3/4", 1", 1-1/4", 1-1/2" and 2"



- Strong, portable pin-assembled aluminum components.
- Easy-to-use ram travel scale and bending charts.
- Conduit supports index to suit all sizes.



| CAT. NO. | UPC NO. | DESCRIPTION |
|----------|---------|---|
| 880 | 16480 | 1", 1-1/4", 1-1/2" and 2" Rigid Conduit Bender without hydraulic pump |
| 880H755 | 16464 | 1", 1-1/4", 1-1/2" and 2" Rigid Conduit Bender with 755 Hand Hydraulic Pump |
| 880E975 | 34200 | 1", 1-1/4", 1-1/2" and 2" Rigid Conduit Bender with 975 Electric Hydraulic Pump |
| 1802 | 21257 | A Bending Table (Optional) |
| 21357 | 21357 | A Conduit Support Pin for use with 1802 Bending Table - (2) Required |
| 10917 | 10917 | A 1/2" Shoe (Optional) |
| 10918 | 10918 | A 3/4" Shoe (Optional) |

| KEY | CAT. NO. | UPC NO. | DESCRIPTION | 880 | 880PVC |
|-----|----------|---------|---|-----|--------|
| A | 747 | 16249 | 15-Ton Hydraulic Ram with 4018GB female quick coupler, includes Keys F, G and one H | 1 | 1 |
| B | 03396 | 03396 | Frame Unit | 1 | 1 |
| C | 03400 | 03400 | Conduit Support | 2 | |
| D | 13679 | 13679 | Conduit Support Pin | 2 | 2 |
| E | 11289 | 11289 | 3/8" x 6' (9.5 x 1829 mm) Hydraulic Hose with two 4033GB male quick couplers | 1 | 1 |
| F | 15829 | 15829 | Cylinder Head Pin Unit with Spring Clips 2725AA (Key G) | 2 | 2 |
| G | 50302 | 50302 | Spring Clips | 2 | 2 |
| H | 10826 | 10826 | Ram Pin, Shoe Pin | 2 | 2 |
| I | 10939 | 10939 | Shoe Support | 1 | 1 |
| K | 10919 | 10919 | 1" Shoe - Rigid | 1 | |
| K | 10920 | 10920 | 1-1/4" Shoe - Rigid | 1 | |
| K | 10921 | 10921 | 1-1/2" Shoe - Rigid | 1 | |
| K | 10922 | 10922 | 2" Shoe - Rigid | 1 | |
| | 14909 | 14909 | Steel Storage Box (not shown) | 1 | 1 |

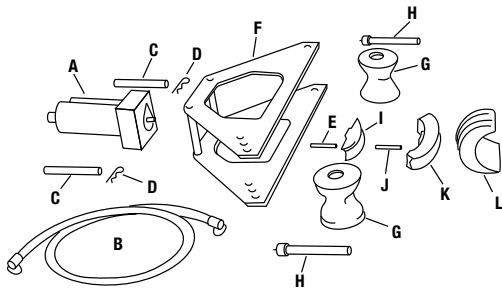
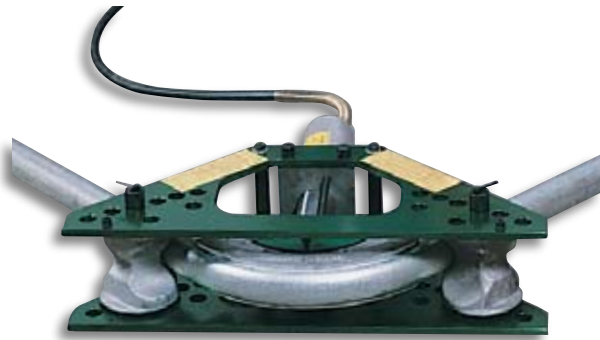
CENTERLINE BENDING RADII FOR 880 & 880 PVC BENDERS

| Rigid Shoe Size | 1/2" | 3/4" | 1" | 1-1/4" | 1-1/2" | 2" |
|-----------------------|-------|--------|--------|--------|--------|--------|
| Bending Radius-Inches | 4" | 4-1/2" | 5-3/4" | 7-1/4" | 8-1/4" | 9-1/2" |
| Bending Radius-cm | 10.16 | 11.43 | 14.60 | 18.41 | 20.95 | 24.13 |

SPECIFICATIONS

| | |
|---------------------|---|
| Capacity | 880: 1" - 2" Rigid Conduit |
| Power Source | 755: Hydraulic Hand Pump 975: 120 VAC Electric Hydraulic Pump 980: 120 VAC Electric Hydraulic Pump |
| Weight | 880: 113 lbs. (52 kg) 880H755: 135 lbs. (61 kg) 880E975: 172 lbs. (78 kg) 880PVC: 116 lbs. (53 kg) |

Rigid Conduit Bender for 1-1/4" - 2" One-Shot 90°s and 2-1/2" - 4" Segment Bending



- Strong, portable pin-assembled aluminum components.
- Easy-to-use ram travel scale and bending charts.
- Conduit supports index to suit all sizes.

| CAT. NO. | UPC NO. | DESCRIPTION |
|----------|---------|---|
| 777 | 16491 | 1-1/4" through 2" One-Shot and 2-1/2" through 4" Segment, Rigid Conduit Bender without hydraulic pump |
| 777HC755 | 16470 | 1-1/4" through 2" One-Shot and 2-1/2" through 4" Segment, Rigid Conduit Bender with 755 Hand Hydraulic Pump |
| 777E975 | 34198 | 1-1/4" through 2" One-Shot and 2-1/2" through 4" Segment, Rigid Conduit Bender with 975 Electric Hydraulic Pump |
| 1802 | 21257 | A Bending Table (Optional) |
| 21359 | 21359 | A Conduit Support Pin for use with 1802 Bending Table - (2) Required |

| KEY | CAT. NO. | UPC NO. | DESCRIPTION | 777 |
|-----|----------|---------|---|-----|
| A | 1736 | 13251 | 27-Ton Hydraulic Ram with 4018GB female quick coupler, includes Keys C thru E | 1 |
| B | 11289 | 11289 | 3/8" x 6' (9.5 x 1829 mm) Hose with two 4033GB male quick couplers | 1 |
| C | 13252 | 13252 | Cylinder Head Pin Unit with Spring Clip 2725AA (Key D) | 2 |
| D | 50302 | 50302 | Spring Clip | 2 |
| E | 10826 | 10826 | Ram Pin | 1 |
| F | 13232 | 13232 | Frame Unit | 1 |
| G | 13193 | 13193 | Conduit Support | 2 |
| H | 14496 | 14496 | Conduit Support Pin | 2 |
| I | 10939 | 10939 | Small Shoe Support 1/2" thru 2" | 1 |
| J | 10826 | 10826 | Shoe Pin | 1 |
| K | | | 90° Aluminum Bending Shoes | |
| | 10920 | 10920 | 1-1/4" Shoe | 1 |
| | 10921 | 10921 | 1-1/2" Shoe | 1 |
| | 10922 | 10922 | 2" Shoe | 1 |
| L | | | Aluminum Segment Bending Shoes | |
| | 13208 | 13208 | 2-1/2" Shoe | 1 |
| | 13209 | 13209 | 3" Shoe | 1 |
| | 13210 | 13210 | 3-1/2" Shoe | 1 |
| | 13211 | 13211 | 4" Shoe | 1 |
| M | 13382 | 13382 | Steel Storage Box (not shown) | 1 |

CENTERLINE BENDING RADII FOR 777 BENDERS

| Rigid Shoe Size | SEGMENT BEND ONLY | | | | | | |
|-----------------------|-------------------|--------|--------|----------|---------|--------|---------|
| | 1-1/4" | 1-1/2" | 2" | 2-1/2" | 3" | 3-1/2" | 4" |
| Bending Radius-Inches | 7-1/4" | 8-1/4" | 9-1/2" | 11-7/16" | 13-3/4" | 16" | 18-1/4" |
| Bending Radius-mm | 184.1 | 209.5 | 241.3 | 290.5 | 349.3 | 406.4 | 463.6 |

SPECIFICATIONS

| | |
|---------------------|--|
| Capacity | 1-1/4" - 4" Rigid Conduit |
| Power Source | 755: Hydraulic Hand Pump 975: 120 VAC Electric Hydraulic Pump 980: 120 VAC Electric Hydraulic Pump |
| Weight | 777: 164 lbs. (75 kg) 777HC755: 173 lbs. (79 kg) 777E975: 508 lbs. (231 kg) |

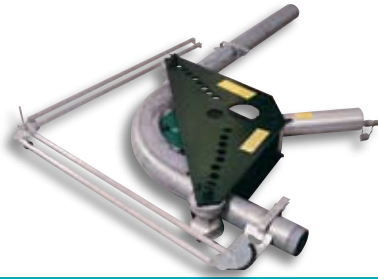
Bending

USA Tel: 800.435.0786
Fax: 800.451.2632

Canada Tel: 800.435.0786
Fax: 800.524.2853

International Tel: +1.815.397.7070
Fax: +1.815.397.9247

Rigid Conduit Benders for One-Shot 90°s in 1-1/4" - 4" (5" with Segment Bending Shoe)



SPECIFICATIONS

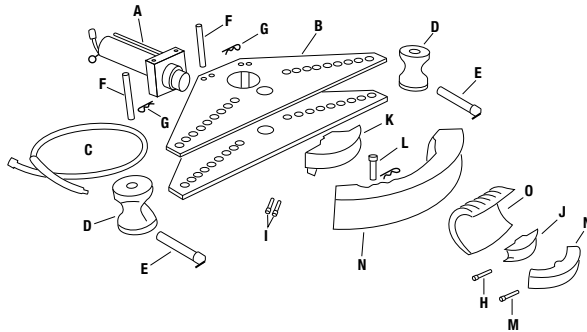
| | |
|---------------------|---|
| Capacity | 884: 1-1/4" - 4" Rigid conduit. 884PVC: 1-1/4" - 4" 40 mil PVC Coated Rigid Conduit 885: 1-1/4" - 5" Rigid Conduit |
| Power Source | 980: 120 VAC Electric Powered Hydraulic Pump 980-22PS: 220 VAC 50/60 Cycle Electric Powered Hydraulic Pump |
| Weight | 884: 421 lbs. (191 kg) 884E980: 494 lbs. (225 kg) 884PVC: 388 lbs. (176 kg) 885: 449 lbs. (204 kg) 885E980: 527 lbs. (239 kg) |

- Strong, yet lightweight, portable, pin-assembled aluminum components.
- Easy-to-use ram travel scale and charts for accurate bends.
- Make elbows, offsets and saddles.
- Both 884 and 885 bend One-Shot 90°s in 1-1/4" - 4" Rigid conduit.
- Optional shoes available to bend PVC-coated Rigid conduit.
- Optional 1802 Bending Table available for easier operation.

| CAT. NO. | UPC NO. | DESCRIPTION |
|----------|---------|--|
| 884 | 16477 | 1-1/4" through 4" Rigid Conduit Bender, without hydraulic pump |
| 884E980 | 34209 | 1-1/4" through 4" Rigid Conduit Bender, with 980 Electric Hydraulic Pump |
| 884PVC | 33614 | 1-1/4", 1-1/2", 2", 3" and 4" PVC Coated Rigid Conduit Bender without hydraulic pump |
| 885 | 16751 | 1-1/4" through 4" One-Shot and 5" Segment Rigid Conduit Bender, without hydraulic pump |
| 885E980 | 34210 | 1-1/4" through 4" One-Shot and 5" Segment Rigid Conduit Bender, with 980 Electric Hydraulic Pump |
| 1802 | 21257 | A Bending Table (Optional) |

Shoes for 40 mil PVC Coated Rigid Conduit on page 115

Rigid Conduit Benders for One-Shot 90°s in 1-1/4" - 4" (5" with Segment Bending Shoe)



884 & 885 CENTERLINE BENDING RADII

| SIZE | RIGID | SIZE | PVC RIGID |
|--------|-------------------------|--------|---------------------|
| 1-1/4" | 7-1/4" (184.1 mm) | 1-1/4" | 7-1/4" (184.1 mm) |
| 1-1/2" | 8-1/4" (209.5 mm) | 1-1/2" | 8-1/4" (209.5 mm) |
| 2" | 9-1/2" (241.3 mm) | 2" | 9-1/2" (241.3 mm) |
| 2-1/2" | 12-1/2" (317.5 mm) | 2-1/2" | 11-7/16" (290.5 mm) |
| 3" | 15" (381 mm) | 3" | 13-3/4" (349.3 mm) |
| 3-1/2" | 17-1/2" (444.5 mm) | 3-1/2" | 16" (406.4 mm) |
| 4" | 20" (508 mm) | 4" | 18-1/4" (463.5 mm) |
| 5" | 25" (635 mm) (885 only) | | |

| KEY | CAT. NO. | UPC NO. | DESCRIPTION | 884 | 884PVC | 885 |
|-----|----------|---------|--|-----|--------|-----|
| A | 1737 | 16752 | 27-Ton Hydraulic Ram with 4018GB female quick coupler, includes Keys F thru I. | 1 | 1 | 1 |
| B | 16754 | 16754 | Frame unit | 1 | 1 | 1 |
| C | 11289 | 11289 | 3/8" x 6' (9.5 x 1829 mm) Hydraulic Hose with two 4033GB male quick couplers | 1 | 1 | 1 |
| D | 15671 | 15671 | Conduit Support | 2 | | 2 |
| | 33454 | 33454 | Conduit Support (not shown) | | 2 | |
| E | 16747 | 16747 | Conduit Support pin | 2 | 2 | 2 |
| F | 16753 | 16753 | Cylinder Head Pin Unit with Spring Clip 2725AA | 2 | 2 | 2 |
| G | 50302 | 50302 | Spring Clip | 2 | 2 | 2 |
| H | 25184 | 25184 | Ram Pin | 1 | 1 | 1 |
| I | 10946 | 10946 | Large Ram Pin | 2 | 2 | 2 |
| J | 10939 | 10939 | Small Shoe Support (1/2" through 2") | 1 | 1 | 1 |
| K | 16741 | 16741 | Large Shoe Support (2-1/2" through 4") | 1 | 1 | 1 |
| L | 10963 | 10963 | Large Shoe Pin | 1 | 1 | 1 |
| M | 10826 | 10826 | Small Shoe Pin | 1 | 1 | 1 |
| | 2050 | 19811 | Steel Storage Box (not shown) | 1 | 1 | 1 |
| N | 10920 | 10920 | 1-1/4" Shoe - Rigid | 1 | | 1 |
| N | 10921 | 10921 | 1-1/2" Shoe - Rigid | 1 | | 1 |
| N | 10922 | 10922 | 2" Shoe - Rigid | 1 | | 1 |
| N | 10923 | 10923 | 2-1/2" Shoe - Rigid | 1 | | 1 |
| N | 10924 | 10924 | 3" Shoe - Rigid | 1 | | 1 |
| N | 10925 | 10925 | 3-1/2" Shoe - Rigid | 1 | | 1 |
| N | 14265 | 14265 | 4" Shoe - 20" centerline radius - Rigid | 1 | | 1 |
| O | 15669 | 15669 | 5" Shoe - Rigid | | | 1 |
| N | 33459 | 33459 | 1-1/4" Shoe - PVC | | 1 | |
| N | 33463 | 33463 | 1-1/2" Shoe - PVC | | 1 | |
| N | 33462 | 33462 | 2" Shoe - PVC | | 1 | |
| N | 34340 | 34340 | 3" Shoe - PVC | | 1 | |
| N | 34344 | 34344 | 4" Shoe - PVC | | 1 | |
| | 34329 | 34329 | 7/8" Wrench (not shown) | | | 1 |

R = REPLACEMENT PART **A** = ACCESSORY

International Tel: +1.815.397.7070
Fax: +1.815.397.9247

Canada Tel: 800.435.0786
Fax: 800.524.2853

USA Tel: 800.435.0786
Fax: 800.451.2632

ACCESSORIES

Accessories for Bending 40 Mil PVC-Coated Rigid Conduit for 880 and 884 Benders



- Special size shoes and supports for bending 40 mil PVC-Coated Rigid conduit.
- Two conduit supports to fit your bender are required. Shoes for 1-1/2" or larger have a cam device to force the conduit out of the shoe after bending. This requires a wrench to turn the cam.

BENDERS / PARTS

| CAT. NO. | UPC NO. | DESCRIPTION |
|----------|---------|---|
| 884PVC | 33614 | An 884 Bender with shoes, supports and wrench for bending 1-1/4", 1-1/2", 2", 3" and 4" 40 mil PVC Coated Rigid conduit. In a steel storage box. (See 884 Conduit Bender for details) |

SHOE UNITS

| 40 MIL PVC COATED RIGID CONDUIT SIZE | CAT. NO. | UPC NO. | DESCRIPTION |
|--------------------------------------|----------|---------|---|
| 1/2" | 33456 | 33456 | Shoe Unit 4" (101.6 mm) Centerline Radius |
| 3/4" | 33457 | 33457 | Shoe Unit 4-1/2" (114.3 mm) Centerline Radius |
| 1" | 33458 | 33458 | Shoe Unit 5-3/4" (146.1 mm) Centerline Radius |
| 1-1/4" | 33459 | 33459 | Shoe Unit 7-1/4" (184.2 mm) Centerline Radius |
| 1-1/2" | 33463 | 33463 | Shoe Unit 8-1/4" (209.6 mm) Centerline Radius |
| 2" | 33462 | 33462 | Shoe Unit 9-1/2" (241.3 mm) Centerline Radius |
| 2-1/2" | 34321 | 34321 | Shoe Unit 11-7/16" (290.5 mm) Centerline Radius |
| 3" | 34340 | 34340 | Shoe Unit 13-3/4" (349.3 mm) Centerline Radius |
| 3-1/2" | 34342 | 34342 | Shoe Unit 16" (406.4 mm) Centerline Radius |
| 4" | 34344 | 34344 | Shoe Unit 18-1/4" (463.6 mm) Centerline Radius |
| — | 33455 | 33455 | 880 Conduit Support – 2 Required |
| — | 33454 | 33454 | 884 Conduit Support – 2 Required |
| — | 34329 | 34329 | 7/8" Wrench. Use with 1-1/2" and larger shoes |

Bending Table (only) for 777, 880, 884 and 885 Rigid Conduit Benders



Typical setup with bender (see note)

- Make bending easier, faster and more accurate.
- Insert conduit to be bent in chain vise, tighten. Turn handle to move the chain vise and position conduit for bending.
- Use the Bending Degree Protractor and the movable chain vise to advance conduit while making segment and other multi-shot large sweep bends.
- Includes 1805 Bending Degree Protractor and metal storage box.

CAT. NO. UPC NO. DESCRIPTION

| | | |
|-------|-------|---|
| 1802 | 21257 | Bending Table - includes pipe support pins for 884 or 885 Benders |
| 21359 | 21359 | A Pipe support Pin for use with 777, 883 and 883-4 Benders, two (2) are required (Optional) |
| 21357 | 21357 | A Pipe Support Pin for use with 880 Bender, two (2) are required (Optional) |

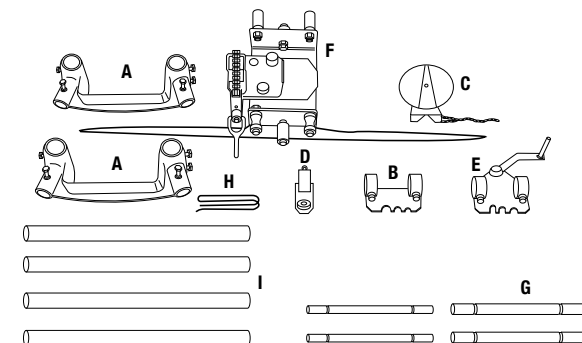
NOTE: To complete setup as shown two 10-foot (3.04 m) lengths of 2" Rigid conduit and Bender are required (purchased separately).

PARTS

| KEY | CAT. NO. | UPC NO. | DESCRIPTION | 1802/ 21257 |
|-----|----------|---------|--|----------------|
| A | 21541 | 21541 | Leg Support Unit | 2 |
| B | 21545 | 21545 | Bender Bracket Unit | 1 |
| C | 1805 | 21318 | Bending Degree Protractor | 1 |
| D | 21542 | 21542 | Chain Idler Unit | 1 |
| E | 21543 | 21543 | Crank Bracket Unit | 1 |
| F | 21544 | 21544 | Pipe Vise Unit | 1 |
| G | 21360 | 21360 | Pipe Support Pin – 1-1/2" for 884 and 885 Bender | 2 |
| H | 21413 | 21413 | Chain Extension Kit | 1 |
| I | 21346 | 21346 | Legs | 4 |
| | 1531 | 23274 | Steel Storage Box (not shown) | 1 |

SPECIFICATIONS

| | |
|----------|------------------------------------|
| Capacity | 777, 880, 883, 884 and 885 Benders |
| Weight | 180 lbs. (82 kg) |



R = REPLACEMENT PART A = ACCESSORY

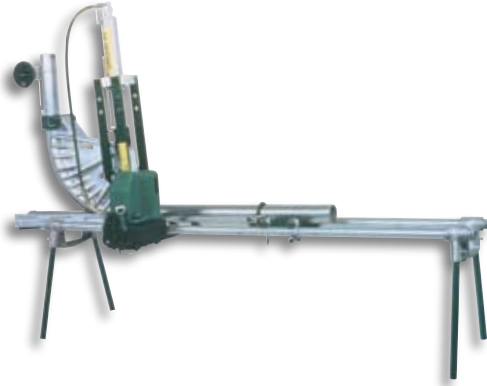
Bending

USA Tel: 800.435.0786
Fax: 800.451.2632

Canada Tel: 800.435.0786
Fax: 800.524.2853

International Tel: +1.815.397.7070
Fax: +1.815.397.9247

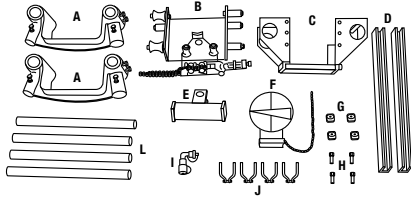
Bending Table (only) for 881 & 881CT Benders



| CAT. NO. | UPC NO. | DESCRIPTION |
|----------|---------|--------------------------------------|
| 1813 | 28901 | Bending Table for 881 & 881CT Bender |

SPECIFICATIONS

| | |
|----------|-----------------|
| Capacity | 881 Benders |
| Weight | 186 lbs (85 kg) |



- Converts the 881 Bender into a comfortable, bench-high machine . . . reduces operator fatigue . . . makes loading faster, easier.
- Offset and one-shot bends in all three types of conduit are made quickly and easily with consistent accuracy.
- Pipe vise holds conduit securely for accurate bends. Prevents conduit from twisting or turning during bend.
- Includes 1805 Bending Degree Protractor and metal storage box.

PARTS

| KEY | CAT. NO. | UPC NO. | DESCRIPTION | 1813/ 28901 |
|-----|----------|---------|-------------------------------|----------------|
| A | 21541 | 21541 | Leg Support Unit | 2 |
| B | 28900 | 28900 | Carriage Unit w/vise | 1 |
| C | 28885 | 28885 | Bender Mounting Unit | 1 |
| D | 29004 | 29004 | Pump Table Support | 2 |
| E | 29022 | 29022 | Ram Positioner | 1 |
| F | 1805 | 21318 | Bending Degree Protractor | 1 |
| G | 53824 | 53824 | Pump Bracket | 4 |
| H | 51185 | 51185 | Pump Mounting Screw | 4 |
| I | 29014 | 29014 | 90° Coupling Unit | 1 |
| J | 53014 | 53014 | Steel Conduit Clamp | 4 |
| L | 21346 | 21346 | Legs | 4 |
| | 1531 | 23274 | Steel Storage Box (not shown) | 1 |
| | 51593 | 51593 | Hex Nut | 4 |
| | 50975 | 50975 | Cap Screw | 4 |
| | 51674 | 51674 | Washer | 4 |

L97 Mini-Magnet Laser Level

NEW



- Professional grade laser level.
- Mini-torpedo design with handy “no-dog” attachment for bending.
- Three rare-earth magnets provide superior holding strength.
- Compact size with 80-plus yard range.
- Laser is capable of working on all planes.
- Four vial design - 0°, 90°, 45°, and 30°.
- V-groove on top of level for easy view of vials.
- Offsets and calculations permanently laser-engraved onto level.

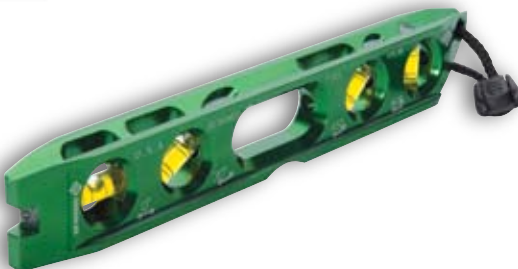
| CAT. NO. | UPC NO. | DESCRIPTION |
|----------|---------|--------------|
| L97 | 03582 | Laser, Level |

SPECIFICATIONS

| | | | |
|--------|------------------|--------|-----------------------|
| Length | 5-1/16" (143 mm) | Weight | 7.3 oz with batteries |
| Width | 3/4" (19 mm) | Height | 1-13/16" (46 mm) |

L107 Electrician's Torpedo Level

NEW



- Professional grade level.
- Four open vial ports for easy viewing from all sides.
- Perfect for pipe and conduit work.
- Four rare-earth magnets allow for hands-free use on metal surfaces.
- Four vial design - 0°, 30°, 45°, and 90°.
- Machined from aluminum alloy and anodized to aircraft standards.
- V-groove on top of level for easy view of vials.
- Offsets and calculations permanently laser-engraved onto level.

| CAT. NO. | UPC NO. | DESCRIPTION |
|----------|---------|----------------|
| L107 | 03583 | Level, Torpedo |

SPECIFICATIONS

| | | | |
|--------|-------------------|--------|------------------|
| Length | 8-1/2" (215.9 mm) | Weight | 5.5 oz |
| Width | 3/4" (19 mm) | Height | 1-1/4" (31.8 mm) |

L77 Mini Magnetic Bubble Level



- Professional grade level with bending offset aid.
- Mini torpedo design with handy “no-dog” attachment for bending.
- Three rare-earth magnets provide superior holding strength.
- Four vial design - 0°, 90°, 45°, and 30°.
- Machined from aluminum alloy and anodized to aircraft standards.
- Compact size fits easily in tool pouch.
- V-groove on top of level for easy view of vials.

| CAT. NO. | UPC NO. | DESCRIPTION |
|----------|---------|----------------------------|
| L77 | 11617 | Mini Magnetic Bubble Level |

| SPECIFICATIONS | |
|----------------|-----------------|
| Length | 5-1/2" (140 mm) |
| Width | 3/4" (19 mm) |
| Height | 1-1/2" (38 mm) |

Bending Degree Protractor for use with 1802 and 1813 Bending Tables



- Use to make concentric offset or large-radius bends.
- Bender must be mounted on a bending table . . . and pipe bent in a vertical position.
- Quick-adjusting, chain-type clamp for easy mounting to all conduit and pipe sizes.
- Face of protractor rotates to compensate for any surface that is not level.

| CAT. NO. | UPC NO. | DESCRIPTION |
|----------|---------|---------------------------|
| 1805 | 21318 | Bending Degree Protractor |

| SPECIFICATIONS | |
|----------------|--|
| Capacity | Protractor face is graduated in quadrants of 18, 20, 21 and 30 shots |
| Weight | 2 lbs. (.91 kg) |

Protractor with Magnetic Base



| CAT. NO. | UPC NO. | DESCRIPTION |
|----------|---------|-------------------------------------|
| 1895 | 35905 | Angle Protractor with Magnetic Base |

| SPECIFICATIONS | |
|----------------|-------------------|
| Weight | 0.4 lbs. (0.2 kg) |

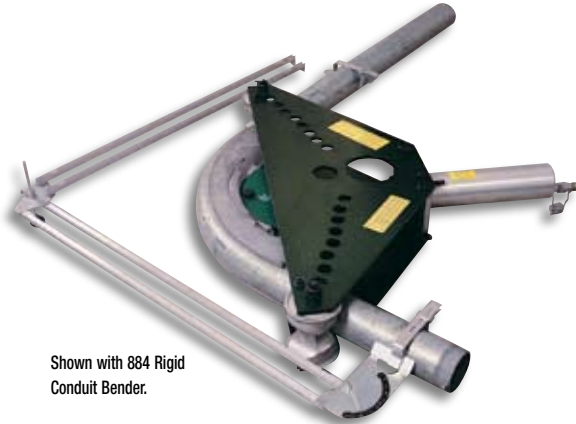
Bending

USA Tel: 800.435.0786
Fax: 800.451.2632

Canada Tel: 800.435.0786
Fax: 800.524.2853

International Tel: +1.815.397.7070
Fax: +1.815.397.9247

Bending Degree Indicator



Shown with 884 Rigid Conduit Bender.

- Accurate way to measure degree of bend on 1/2" through 4" conduit.
- Can be used with all horizontal-type benders.
- Large, easy-to-read 0° to 90° scale.
- Quick-adjusting clamps for easy mounting on 1/2" through 4" conduit.

| CAT. NO. | UPC NO. | DESCRIPTION |
|----------|---------|--------------------------|
| 1807 | 12743 | Bending Degree Indicator |

| SPECIFICATIONS | |
|----------------|-------------------|
| Capacity | 1/2" - 4" Conduit |
| Weight | 15 lbs. (6.8 kg) |

Bending Handbook and Slide Rule Bending Calculators



- Bending information on stub-ups, offsets, saddles and concentric bends.
- Pocket size 3-1/2" x 6-3/4".
- Bending charts for Greenlee Benders.
- Easy to use for fast, accurate bending calculations.

| CAT. NO. | UPC NO. | DESCRIPTION |
|----------|---------|--|
| 38405 | 38405 | Bending Book, English |
| 38409 | 38409 | Bending Book, French |
| 38406 | 38406 | Slide Rule Calculator for 777, 880, 883, 884 and 885 Benders |
| 38407 | 38407 | Slide Rule Calculator for segment bends |
| 38408 | 38408 | Slide Rule Calculator for 881 and 882 Benders |

Conduit Size Chart

| SIZE | EMT ELECTRICAL METALLIC TUBING | | | | | | IMC INTERMEDIATE CONDUIT | | | | | | RIGID CONDUIT STEEL OR ALUMINUM | | | | | |
|--------|--------------------------------|-------|-------------|-------|----------------|-----|--------------------------|-------|-------------|-------|----------------|-----|---------------------------------|-------|-------------|-------|----------------|-----|
| | OUTSIDE DIA. | | INSIDE DIA. | | WALL THICKNESS | | OUTSIDE DIA. | | INSIDE DIA. | | WALL THICKNESS | | OUTSIDE DIA. | | INSIDE DIA. | | WALL THICKNESS | |
| | INCHES | mm | INCHES | mm | INCHES | mm | INCHES | mm | INCHES | mm | INCHES | mm | INCHES | mm | INCHES | mm | INCHES | mm |
| 1/2" | .706 | 17.9 | .622 | 15.8 | .042 | 1.1 | .815 | 20.7 | .675 | 17.1 | .070 | 1.8 | .840 | 21.3 | .622 | 15.8 | .109 | 2.8 |
| 3/4" | .922 | 23.4 | .824 | 20.9 | .049 | 1.3 | 1.029 | 26.1 | .879 | 22.3 | .075 | 1.9 | 1.050 | 26.7 | .824 | 20.9 | .113 | 2.9 |
| 1" | 1.163 | 29.5 | 1.049 | 26.6 | .057 | 1.5 | 1.290 | 32.8 | 1.120 | 28.4 | .085 | 2.2 | 1.315 | 33.4 | 1.049 | 26.6 | .133 | 3.4 |
| 1-1/4" | 1.510 | 38.4 | 1.380 | 35.1 | .065 | 1.7 | 1.638 | 41.6 | 1.468 | 37.3 | .085 | 2.2 | 1.660 | 42.2 | 1.380 | 35.0 | .140 | 3.6 |
| 1-1/2" | 1.740 | 44.2 | 1.610 | 40.9 | .065 | 1.7 | 1.883 | 47.8 | 1.703 | 43.3 | .090 | 2.3 | 1.900 | 48.3 | 1.610 | 40.9 | .145 | 3.7 |
| 2" | 2.197 | 55.8 | 2.067 | 52.5 | .065 | 1.7 | 2.360 | 59.9 | 2.170 | 55.1 | .095 | 2.4 | 2.375 | 60.3 | 2.067 | 52.5 | .154 | 3.9 |
| 2-1/2" | 2.875 | 73.0 | 2.731 | 69.4 | .072 | 1.8 | 2.857 | 72.6 | 2.597 | 66.0 | .130 | 3.3 | 2.875 | 73.0 | 2.469 | 62.7 | .203 | 5.2 |
| 3" | 3.500 | 88.9 | 3.356 | 85.2 | .072 | 1.9 | 3.476 | 88.3 | 3.216 | 81.7 | .130 | 3.3 | 3.500 | 88.9 | 3.068 | 77.9 | .216 | 5.5 |
| 3-1/2" | 4.000 | 101.6 | 3.834 | 97.4 | .083 | 2.1 | 3.971 | 100.9 | 3.711 | 94.3 | .130 | 3.3 | 4.000 | 101.6 | 3.548 | 90.1 | .226 | 5.7 |
| 4" | 4.500 | 114.3 | 4.334 | 110.1 | .083 | 2.1 | 4.466 | 113.4 | 4.206 | 106.8 | .130 | 3.3 | 4.500 | 114.3 | 4.026 | 102.3 | .237 | 6.0 |
| 5" | — | — | — | — | — | — | — | — | — | — | — | — | 5.563 | 141.3 | 5.047 | 128.2 | .258 | 6.5 |
| 6" | — | — | — | — | — | — | — | — | — | — | — | — | 6.625 | 168.3 | 6.065 | 154.0 | .280 | 7.1 |

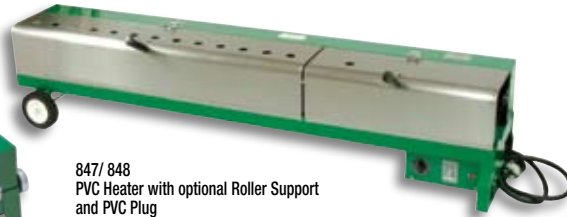
PVC

PVC Heater Selection Guide

849 PVC Heater



847/ 848
PVC Heater with optional Roller Support
and PVC Plug



851 PVC Heater



PVC HEATING

| CAT. NO. – DESCRIPTION | PAGE NO. | 1/2" | 3/4" | 1" | 1-1/4" | 1-1/2" | 2" | 2-1/2" | 3" | 3-1/2" | 4" | 5" | 6" |
|-------------------------------|----------|------|------|----|--------|--------|----|--------|----|--------|----|----|----|
| 860-1-1/2 PVC Heating Blanket | 119 | ✓ | ✓ | ✓ | ✓ | ✓ | | | | | | | |
| 860-3 PVC Heating Blanket | 119 | | | | | | ✓ | ✓ | ✓ | | | | |
| 860-4 PVC Heating Blanket | 119 | | | | | | | | | ✓ | ✓ | | |
| 849 PVC Heater | 120 | ✓ | ✓ | ✓ | ✓ | ✓ | ✓ | | | | | | |
| 851 PVC Heater | 120 | ✓ | ✓ | ✓ | ✓ | ✓ | ✓ | ✓ | ✓ | ✓ | ✓ | | |
| 847 / 848 PVC Heater | 120 | ✓ | ✓ | ✓ | ✓ | ✓ | ✓ | ✓ | ✓ | ✓ | ✓ | ✓ | ✓ |

PVC Heating Blankets for up to 4", All Schedules



- Make bends, offsets or saddles in PVC fast and easy.
- Easy to use: wrap blanket around PVC, secure with hook and loop strap. Built-in stiffeners help keep the blanket tight to the PVC surface. Remove blanket and form bend by hand.
- Controlled, even heating for uniform bending.
- Heavy-duty cord and thermostat for long life.
- Temperature over 300° F (149° C).

| CAT. NO. | UPC NO. | DESCRIPTION |
|-----------|---------|---------------------------------------|
| 860-1-1/2 | 31486 | PVC Heating Blanket for up to 1-1/2" |
| 860-3 | 31487 | PVC Heating Blanket for 2"-3" |
| 860-4 | 31488 | PVC Heating Blanket for 3-1/2" and 4" |

SPECIFICATIONS

| | 860-1-1/2 | 860-3 | 860-4 |
|---------------------|------------------------------------|-------------------------------------|-------------------------------------|
| Capacity | Up to 1-1/2" PVC All Schedules | 2" - 3" PVC All Schedules | 3-1/2" - 4" PVC All Schedules |
| Power Source | 120 VAC | 120 VAC | 120 VAC |
| Size | 13" x 8-1/4" (330.2 x 209.6 mm) | 30" x 13-1/4" (762.0 x 336.6 mm) | 38" x 16-1/4" (965.2 x 412.8 mm) |
| Weight | 1.7 lbs. (.8 kg) | 3.3 lbs. (1.5 kg) | 4.9 lbs. (2.2 kg) |
| Wattage | 200 | 800 | 1300 |

Electric PVC Heater for 1/2" - 2", All Schedules



120 VAC
20 AMP

- Easy to use: preheat for 10 minutes, insert PVC, rotate until pliable, remove and form bend.
- Sturdy double wall metal with fiberglass insulation and reflective interior for fast, even heat.
- Full length door for easy PVC loading and removal.
- Other features include on/off switch, pilot light and carrying handle.
- Heats 24" Long section of pipe.

| CAT. NO. | UPC NO. | DESCRIPTION |
|----------|---------|-----------------------------------|
| 849 | 27395 | Electric PVC Heater for 1/2" - 2" |
| 27811 | 27811 | Calrod Heating Element |

SPECIFICATIONS

| | |
|---------------------|---------------------------------------|
| Capacity | 1/2" - 2" PVC All Schedules |
| Power Source | 120 VAC 20 Amp or 3000 Watt Generator |
| Weight | 15 lbs. (6.8 kg) |

Electric PVC Heater for 1/2" - 4", All Schedules



120 VAC
20 AMP

- Easy to use: preheat for 10 minutes, open lid and position PVC, close lid, rotate until pliable, open lid, remove PVC and form bend.
- Heavy-duty, insulated metal walls and cover with reflective interior for efficient, even heat.
- Full-length door for easy loading and unloading.
- On/off switch with indicator light.
- Sturdy wheels for easy mobility.
- Use two units in tandem to heat large sweep bends.
- Heats 50" Long section of pipe.

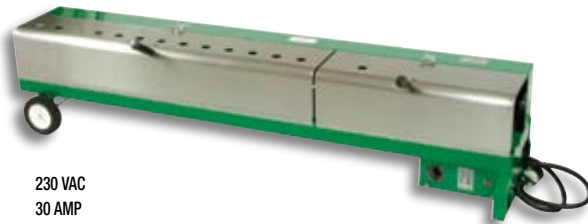
| CAT. NO. | UPC NO. | DESCRIPTION |
|----------|---------|-----------------------------------|
| 851 | 35577 | Electric PVC Heater for 1/2" - 4" |
| 35592 | 35592 | Calrod Heating Element |

SPECIFICATIONS

| | |
|---------------------|---------------------------------------|
| Capacity | 1/2" - 4" PVC All Schedules |
| Power Source | 120 VAC 20 Amp or 3600 Watt Generator |
| Length | 52" (1321 mm) |
| Weight | 53 lbs. (24 kg) |
| Wattage | 2300 |

See below for 2" - 4" PVC plugs or 859-4 Plug Set.

Electric PVC Heater for 1/2" - 6", All Schedules



230 VAC
30 AMP

- Easy to use: preheat for 10 minutes, open lid and position PVC, close lid, rotate until pliable, open lid, remove PVC and form bend. 848 model has motorized rotation.
- Heavy-duty metal construction with reflective interior for fast, efficient heating.
- Has heating chart, timer, and on/off switch with indicator light for added convenience.
- Double doors with piano hinges allow heating shorter lengths with one door open.
- Sturdy wheels for easy mobility.
- Heats 65" Long section of pipe.

SPECIFICATIONS

| | |
|---------------------|---|
| Capacity | 1/2" - 6" PVC All Schedules |
| Power Source | 230 VAC 30 AMP or 7000 Watt Generator |
| Length | 71" (1803 mm) |
| Weight | 847 - 78 lbs. (36 kg) 848 - 80 lbs. (37 kg) |
| Wattage | 6600 |

| CAT. NO. | UPC NO. | DESCRIPTION |
|----------|---------|---|
| 847 | 30866 | Electric PVC Heater for 1/2"-6" All Schedules |
| 848 | 30867 | Electric PVC Heater with Motorized PVC Rotation for 1/2"-6" All Schedules |
| 31092 | 31092 | Motorized PVC rotation kit for 847 |
| 857 | 31093 | PVC Roller Support (Optional) |
| 30908 | 30908 | Calrod Heating Element |

PVC ACCESSORIES

PVC Plugs and Plug Set



- Use with PVC Heating Blankets or Electric Heaters to plug the ends of the PVC being heated. The trapped air will help keep the PVC from collapsing while forming the bend.
- Use on Schedule 40 and 80 PVC.
- Available in 2" - 4" set or individual sizes 2" - 6". Order two, one for each end of the PVC.

SPECIFICATIONS

| | |
|-----------------|---|
| Capacity | 2" - 6" PVC Schedules 40 and 80 |
| Weight | 859-4 - 8 lbs. (3.6 kg) 30976 - .3 lbs. (0.2kg) 30977 - .4 lbs. (0.2 kg) 30978 - .4 lbs. (0.2 kg) 30979 - .6 lbs. (3.6 kg) 30980 - 1lbs. (0.5 kg) 30981 - 1.3 lbs. (0.6 kg) |

| CAT. NO. | UPC NO. | DESCRIPTION |
|----------|---------|--|
| 859-4 | 35740 | PVC Plug Set for 2" - 4". Includes 2 each of 2", 2-1/2", 3" and 4" plugs and carrying case. Case has a place for optional 5" and 6" sizes. |
| 30976 | 30976 | R 2" PVC Plug |
| 30977 | 30977 | R 2-1/2" PVC Plug |
| 30978 | 30978 | R 3" and 3-1/2" PVC Plug |
| 30979 | 30979 | R 4" PVC Plug |
| 30980 | 30980 | R 5" PVC Plug |
| 30981 | 30981 | R 6" PVC Plug |
| 31228 | 31228 | R Plastic Carrying Case |

PVC Cutter for up to 1"



- Cuts a wide range of PVC conduit, plastic pipe and rubber hose.
- Lightweight, easy to put in tool pouch.
- Tough nylon handles.
- Replaceable stainless steel blade.

| CAT. NO. | UPC NO. | DESCRIPTION |
|----------|---------|-------------------------|
| 861 | 09861 | PVC Cutter for up to 1" |
| 07995 | 07995 | R Blade |

SPECIFICATIONS

| | |
|-----------------|--------------------|
| Capacity | Up through 1" PVC |
| Weight | 0.24 lbs. (0.1 kg) |

PVC Cutter for up to 1-1/4"



- Ratchet action for fast, easy cutting.
- Heat-treated, replaceable steel blade for long cutting life.
- Rugged metal alloy frame for durability.

| CAT. NO. | UPC NO. | DESCRIPTION |
|----------|---------|-----------------------------|
| 864 | 04253 | PVC Cutter for up to 1-1/4" |
| 00355 | 00355 | R Blade Kit |

SPECIFICATIONS

| | |
|-----------------|--------------------|
| Capacity | Up thru 1-1/4" PVC |
| Weight | 0.8 lbs. (0.4 kg) |

PVC Cutter for up to 2"



- High-leverage compound ratchet action and long handles reduce effort.
- Heavy-duty metal frame for cutting large diameters.
- Sharpenable and replaceable tool steel blade.

| CAT. NO. | UPC NO. | DESCRIPTION |
|----------|---------|-------------------------|
| 865 | 09865 | PVC Cutter for up to 2" |
| 07978 | 07978 | R Blade |

SPECIFICATIONS

| | |
|-----------------|-------------------|
| Capacity | Up thru 2" PVC |
| Weight | 2.5 lbs. (1.1 kg) |

