

Commercial

L LEW ELECTRIC FITTINGS COMPANY

LEADING MANUFACTURER OF QUALITY FLOOR BOXES
SERVING THE ELECTRICAL INDUSTRY SINCE 1901

Log on
for complete
www.lewelectric.com
line catalog and
specifications



1101Series
SH-1101Series
32Series
FFBSeries
SBSeries
NOZZLESeries

Catalog #103C
www.lewelectric.com



- 1101Series
- SH-1101Series
- 32Series
- FFBSeries
- SBSeries
- NOZZLESeries

FEATURES & BENEFITS

- CAST IRON (WATER-TIGHT) CONSTRUCTION FOR ANY GRADE APPLICATION.
- MW-SERIES FOR CORE DRILLING APPLICATIONS.
- FFB SERIES FOR "FLOATING" GYMNASIUM FLOORS WHERE BOX IS FREE FROM ANY BASE MOUNTING AND CAN MOVE WITH THE FLOOR.
- MOST BOXES ALSO AVAILABLE IN BRUSHED ALUMINUM (FLIP-TOP) OR NICKEL SILVER FINISH (SCREW PLUGS).
- ALL ADJUSTABLE BOXES AND NOZZLES UL LISTED.

1101 Series	3
SH-1101 Series	4
32 Series	6
FFB Series	8
SB Series	10
NOZZLE Series	11
Replacement Plugs	14
Crossovers	15

- 1101Series
- SH-1101Series
- 32Series
- FFBSeries
- SBSeries
- NOZZLESeries

1101

Rectangular Floor Boxes—Fully Adjustable

CATALOG #	DESCRIPTION	DIMENSIONS			ADJUST AFTER	INTERIOR CAPACITY	CONDUIT OPENINGS
		H	L	W			
1101-58*	DEEP, SINGLE GANG CAST BOX, FULLY ADJUSTABLE	3 3/4"	4 1/4"	3 3/8"	3/8"	13 cu. in.(MIN)	SIDES (4) 3/4"
1102-58*	DEEP, TWO GANG CAST BOX (PARTITIONED), FULLY ADJUSTABLE	3 3/4"	6 3/8"	4 1/4"	3/8"	26 cu. in.(MIN) (13 cu. in./GANG)	SIDES (6) 3/4"
1103-58*	DEEP, THREE GANG CAST BOX (PARTITIONED), FULLY ADJUSTABLE	3 3/4"	9 1/4"	4 1/4"	3/8"	40 cu. in.(MIN) (13 cu. in./GANG)	SIDES (8) 3/4"
6264-58*	DEEP, FOUR GANG CAST BOX (PARTITIONED), FULLY ADJUSTABLE	3 3/4"	12 1/4"	4 1/4"	3/8"	78 cu. in. (18 & 21 cu. in./GANG)	SIDES (10) 3/4"

*AVAILABLE IN ALUMINUM FINISH (ADD-A)

1101-58



1102-58



1103-58



6264-58



- 1101Series
- SH-1101Series
- 32Series
- FFBSeries
- SBSeries
- NOZZLESeries

Rectangular Floor Boxes—Semi Adjustable

CATALOG #	DESCRIPTION	DIMENSIONS			ADJUST BEFORE	INTERIOR CAPACITY	CONDUIT OPENINGS
		H	L	W			
SH-1101-58*	SHALLOW, SINGLE GANG CAST BOX, SEMI ADJUSTABLE	2 1/4"	4 1/4"	3 3/8"	1"	16 cu. in..	SIDES (4) 3/4"
SH-6262-58*	SHALLOW, TWO GANG CAST BOX (PARTITIONED), SEMI ADJUSTABLE	2 1/4"	6 3/8"	4 1/4"	1"	25 cu. in. (12.5 cu. in./GANG)	SIDES (6) 3/4"
SH-6263-58*	SHALLOW, THREE GANG CAST BOX (PARTITIONED), SEMI ADJUSTABLE	2 1/4"	9 1/4"	4 1/4"	1"	50 cu. in.. (16.5 cu. in./GANG)	SIDES (8) 3/4"
SH-6264-58*	SHALLOW, FOUR GANG CAST BOX (PARTITIONED), SEMI ADJUSTABLE	2 1/4"	12 1/4"	4 1/4"	1"	66 cu. in. (16.5 cu. in./GANG)	SIDES (10) 3/4"

*FOR ALUMINUM FINISH ADD SUFFIX-A

SH-6264-58



SH-6262-58



SH-6263-58



SH-1101-58



- 1101Series
- SH-1101Series
- 32Series
- FFBSeries
- SBSeries
- NOZZLESeries

1101

Rectangular Floor Boxes—Covers & Flanges

CATALOG#	DESCRIPTION
6304-BE	BRASS, HINGED 2 7/8" X 3 7/8" COVER (1/4" THICK) FOR DATA OR TWIST LOCK RECEPT. (UP TO 30 AMP)
6304-DFB-1*	BRASS, HINGED 2 7/8" X 3 7/8" COVER (1/4" THICK) FOR DUPLEX
6304-DFB-1-TEL*	SAME AS ABOVE BUT FOR COM/DATA
6304-DFB-1-GFI*	SAME AS ABOVE BUT FOR DECORA RECEPTACLE
6304-DFB-LR*	BRASS, DUAL HINGED 2 7/8" X 3 7/8" COVER (1/4" THICK) FOR DUPLEX
6304-DP**	BRASS, 2 7/8" X 3 7/8" COVER (1/8" THICK) WITH (2) 1 1/2" SCREW PLUGS FOR DUPLEX
6304-S**	BRASS, 2 7/8" X 3 7/8" COVER (1/8" THICK) WITH 2" - 1/2" COMBO PLUG FOR COM/DATA
CF-1101-DFB*	SINGLE GANG BRASS CARPET FLANGE, 5 1/2" X 6 1/2"
CF-1102-DFB*	TWO GANG BRASS CARPET FLANGE, 6 1/2" X 8 1/2"
CF-1103-DFB*	THREE GANG BRASS CARPET FLANGE, 6 1/2" X 11 1/2"
CF-6264-DFB*	FOUR GANG BRASS CARPET FLANGE, 6 1/2" X 14 1/2"

*AVAILABLE IN ALUMINUM FINISH (ADD-A)

**AVAILABLE IN NICKEL SILVER FINISH (ADD-NS)

6304-DFB-1

6304-BE

6304-DP

6304-S



6304-S-NS

6304-DP-NS

6304-DFB-1-A

6304-DFB-LR-A



6304-DFB-LR

CF-1102-DFB-A

CF-1102-DFB



6

- 1101Series
- SH-1101Series
- 32Series
- FFBSeries
- SBSeries
- NOZZLESeries

32 Round Floor Boxes

CATALOG #	DESCRIPTION	DIMENSIONS		ADJUST BEFORE	ADJUST AFTER	INTERIOR CAPACITY	CONDUIT OPENINGS
		A	B				
532-58*	DEEP, CAST BOX, FULLY ADJUSTABLE	4 1/4"	3 7/8"	X	3/8"	32 CU. IN.	SIDES (4) 3/4"
532-SB-58*	SHALLOW, CAST BOX, FULLY ADJUSTABLE	4 1/4"	3"	X	3/8"	24 CU. IN.	SIDES (4) 3/4"
532-XD-58*	EXTRA DEEP, CAST BOX, FULLY ADJUSTABLE	4 1/4"	4 3/4"	X	1/2"	42 CU. IN.	SIDES (4) 3/4"
CATALOG #	DESCRIPTION	DIMENSIONS		ADJUST BEFORE	ADJUST AFTER	INTERIOR CAPACITY	CONDUIT OPENINGS
A	B						
332-58*	SHALLOW, CAST BOX, SEMI ADJUSTABLE	4 1/4"	2"	1"	X	12 CU. IN.	SIDES (4) 3/4"
MW-332-58*	CORE DRILL CAST BOX, SEMI ADJUSTABLE	4 1/4"	2"	1/2"	X	12 CU. IN.	SIDES (4) 3/4"

*AVAILABLE IN ALUMINUM FINISH (ADD-A)



- 1101Series
- SH-1101Series
- 32Series
- FFBSeries
- SBSeries
- NOZZLESeries

32

Round Floor Boxes—Covers

CATALOG#	DESCRIPTION
DFB-1*	BRASS, HINGED 4" COVER (1/4" THICK) FOR DUPLEX
DFB-1-TEL*	SAME AS ABOVE FOR COM/DATA
DFB-1-GFI*	SAME AS ABOVE BUT FOR DECORA RECEPTACLE
DFB-LR*	BRASS, DUAL HINGED 4" COVER (1/4" THICK) FOR DUPLEX
523-DP**	BRASS, 4" COVER (1/8" THICK) WITH (2) 1-1/2" SCREW PLUGS FOR DUPLEX
524**	BRASS, 4" COVER (1/8" THICK) WITH 2" – 1/2" COMBO PLUG FOR COM/DATA
524-BE	BRASS, HINGED 4" COVER (1/4" THICK) FOR DATA OR TWIST LOCK RECEPTACLE (UP TO 30 AMPS)
DCF-1-X*	BRASS COVER/FLANGE COMBO (5 3/4") FITS ALL ROUND BOXES
DCF-1-XLR*	BRASS DUAL LID COVER/FLANGE COMBO (5 3/4") FITS ALL ROUND BOXES
SCF-1*	BRASS FLANGE 5 1/4" (SHALLOW) FITS ALL ROUND BOXES
TCP-1	BRASS FLANGED COVER 5 3/4" DIAMETER WITH 2" – 1/2" COMBO PLUG FOR COM/DATA
TCP-2	BRASS FLANGED COVER 5 3/4" DIAMETER WITH (2) 1-1/2" SCREW PLUGS FOR DUPLEX

* AVAILABLE IN ALUMINUM FINISH (ADD-A)

** AVAILABLE IN NICKEL SILVER FINISH (ADD-NS)



- 1101Series
- SH-1101Series
- 32Series
- **FFBSeries**
- SBSeries
- NOZZLESeries

FFB Gymnasium Floor Boxes

CATALOG #	DESCRIPTION	DIMENSIONS			INTERIOR CAPACITY	CONDUIT OPENINGS
		H	L	W		
FFB-2	FLOOR BOX WITH 1/8" BRASS COVER (2) 2" OPENINGS FOR RECEPTACLE OR MICROPHONE	3"	7 1/2"	5"	33 CU. IN.	SIDES (6) 3/4" (1 1/2" OPT.)
FFB-2-BE	FLOOR BOX WITH 1/4" BRASS COVER (2) 2 1/4" HINGED OPENINGS FOR RECEPTACLE OR MICROPHONE (MIC JACK ADAPTER PLATES INCLUDED)	3 3/16"	7 1/2"	5"	33 CU. IN.	SIDES (6) 3/4" (1 1/2" OPT.)
FFB-4	FLOOR BOX WITH (2) 1/8" BRASS COVERS (RT. & LFT.) (4) 2" OPENINGS FOR RECEPTACLE OR MICROPHONE	3"	13 1/2"	5"	78 CU. IN.	SIDES (10) 3/4" (1 1/2" OPT.)
FFB-4-BE	FLOOR BOX WITH (2) 1/4" BRASS COVERS (RT. & LFT.) (2) 2 1/4" HINGED OPENINGS FOR RECEPTACLE OR MICROPHONE (MIC JACK ADAPTER PLATES INCLUDED)	3 3/16"	13 1/2"	5"	78 CU. IN.	SIDES (10) 3/4" (1 1/2" OPT.)
FFB-5	FLOOR BOX WITH (5) 1/8" BRASS COVERS (5) 2" OPENINGS FOR RECEPTACLE OR MICROPHONE	3"	15 3/4"	5"	95 CU. IN.	SIDES (12) 3/4" (1 1/2" OPT.)
FFB-5-BE	FLOOR BOX WITH (5) 1/4" BRASS COVERS (5) 2 1/4" HINGED OPENINGS FOR RECEPTACLE OR MICROPHONE (MIC JACK ADAPTER PLATES INCLUDED)	3 3/16"	15 3/4"	5"	95 CU. IN.	SIDES (12) 3/4" (1 1/2" OPT.)

FFB-5-BE



FFB-2



FFB-2-BE



FFB-5



FFB-4



FFB-4-BE



- 1101Series
- SH-1101Series
- 32Series
- FFBSeries
- SBSeries
- NOZZLESeries

FFB

Gymnasium Floor Boxes—Covers

CATALOG #	DESCRIPTION
FFB-2BE-C	BRASS COVER (1/4" THICK). STANDARD USE WITH MICROPHONE. MAY BE USED WITH TELEPHONE OR TWIST LOCK RECEPTACLE (UP TO 30 AMPS)
FFB-2-C	BRASS, COVER (1/8" THICK). STANDARD USE WITH MICROPHONE. MAY BE USED WITH MICROPHONE OR SINGLE RECEPTACLE (NOT TWIST LOCK)
FFB-4BE-C	TWO PIECE SET (RT. & LFT.), BRASS, HINGED COVERS (1/4" THICK). STANDARD USE WITH MICROPHONE. MAY BE USED WITH TELEPHONE OR TWIST LOCK RECEPTACLE (UP TO 30 AMPS)
FFB-4-C	TWO PIECE SET (RT. & LFT.), BRASS COVERS (1/8" THICK). STANDARD USE WITH MICROPHONE. MAY BE USED WITH TELEPHONE OR SINGLE RECEPTACLE (NOT TWIST LOCK)
FFB-5BE-C-SET	FIVE PIECE SET, BRASS HINGED COVERS (1/4" THICK). STANDARD USE WITH MICROPHONE. MAY BE USED WITH TELEPHONE OR TWIST LOCK RECEPTACLE (UP TO 30 AMPS)
FFB-5C-SET	FIVE PIECE SET, BRASS COVERS (1/8" THICK). STANDARD USE WITH MICROPHONE. MAY BE USED WITH TELEPHONE OR SINGLE RECEPTACLE (NOT TWIST LOCK)

FFB-4BE-C



FFB-4-C



FFB-5BE-C



FFB-2BE-C



FFB-2-C



FFB-5-C



- 1101Series
- SH-1101Series
- 32Series
- FFBSeries
- **SBSeries**
- NOZZLESeries

SB Square Floor Boxes (50 Amp)

CATALOG #	DESCRIPTION	DIMENSIONS			ADJUST AFTER	INTERIOR CAPACITY	CONDUIT OPENINGS
		H	L	W			
SB-55	FULLY ADJUSTABLE FLOOR BOX WITH BRASS (1/4" THICK) FOR USE WITH SCOREBOARD COVER RECEPTACLE 30 TO 50 AMP RECEPTACLES (SPECIFY) NO WIRING DEVICES INCLUDED. LID OPENING 2 7/8" DIAMETER.	3 5/8"	5 1/2"	5 1/2"	3/8"	45 cu. in..	SIDES (4) 3/4" (1 1/2" OPT.)
SB-55-DFB-1	SAME AS ABOVE WITH DFB-1 BRASS COVER FOR DUPLEX, TRIPLEX, OR GFI RECEPTACLES (NONE INCLUDED)	3 5/8"	5 1/2"	5 1/2"	3/8"	45 cu. in.	SIDES (4) 3/4" (1 1/2" OPT.)

SB-55



SB-55-DFB-1



- 1101Series
- SH-1101Series
- 32Series
- FFBSeries
- SBSeries
- **NOZZLESeries**

NOZZLE

Low Profile Nozzles

CATALOG #	DESCRIPTION	DIMENSIONS			STANDARD OPENINGS
		H	L	D	
FDN-300-A	ALUMINUM FLOOR NOZZLE	2 7/8"	4"	2 7/8"	SPECIFY (1/2", 3/4", 1")
FDN-300-B	BRASS FLOOR NOZZLE	2 7/8"	4"	2 7/8"	SPECIFY (1/2", 3/4", 1")
FDN-300-A W/P	ALUMINUM FLOOR NOZZLE WITH PARTITION	3"	4 3/4"	4 1/4"	(2) 3/4" (THREADED)
FDN-300-B W/P	BRASS FLOOR NOZZLE WITH PARTITION	3"	4 3/4"	4 1/4"	(2) 3/4" (THREADED)
FDN-709-A	ALUMINUM FLOOR NOZZLE FOR UP TO (4) DUPLEX RECEPTACLES (NOT INCLUDED)	4 3/4"	4 1/4"	4 1/4"	1"
FDN-709-B	BRASS FLOOR NOZZLE FOR UP TO (4) DUPLEX RECEPTACLES (NOT INCLUDED)	4 3/4"	4 1/4"	4 1/4"	1"

FDN-709-A



FDN-300-A



FDN-300-A-WP



- 1101Series
- SH-1101Series
- 32Series
- FFBSeries
- SBSeries
- **NOZZLESeries**

NOZZLE

Pedestal Nozzles

CATALOG #	DESCRIPTION	DIMENSIONS			STANDARD OPENINGS (THREADED)
		H	L	D	
CB-704-NP-A	ALUMINUM FLOOR NOZZLE	5 5/8"	2"	2 1/2"	1"
CB-704-NP-B	BRASS FLOOR NOZZLE	5 5/8"	2"	2 1/2"	1"
CB-709-A	ALUMINUM FLOOR NOZZLE FOR UP TO (4) DUPLEX RECEPTACLES (NOT INCLUDED)	5 3/4"	4 3/4"	4 1/4"	1"
CB-709-B	BRASS FLOOR NOZZLE FOR UP TO (4) DUPLEX RECEPTACLES (NOT INCLUDED)	5 3/4"	4 3/4"	4 1/4"	1"
H-701-A	ALUMINUM FLOOR NOZZLE, SINGLE SIDED	3"	4"	1 1/2"	1/2"
H-701-B	BRASS FLOOR NOZZLE, SINGLE SIDED	3"	4"	1 1/2"	1/2"
H-702-A	ALUMINUM FLOOR NOZZLE	4"	4"	2 1/2"	1/2"
H-702-B	BRASS FLOOR NOZZLE	4"	4"	2 1/2"	1/2"

CB-704-NP-A



CB-709-A



H-701-A



H-702-A



- 1101Series
- SH-1101Series
- 32Series
- FFBSeries
- SBSeries
- NOZZLESeries

NOZZLE

Nozzle Accessories

CATALOG#	DESCRIPTION
710	NOZZLE PLATE WILL ACCOMMODATE (2) DUPLEX RECEPTACLES. SPECIFY ALUMINUM (A) OR BRASS (B).
711	NOZZLE PLATE WILL ACCOMMODATE 30-50 AMP RECEPTACLE. SPECIFY ALUMINUM (A) OR BRASS (B).
712	BLANK NOZZLE PLATE. SPECIFY ALUMINUM (A) OR BRASS (B).
713-GFI	NOZZLE PLATE WILL ACCOMMODATE (2) GFI RECEPTACLES. SPECIFY ALUMINUM (A) OR BRASS (B).
714S	NOZZLE PLATE WILL ACCOMMODATE (2) CAT. 5 AND (2) COMPUTER CONNECTORS. STAINLESS STEEL ONLY.
803	BLANK NOZZLE PLATE. SPECIFY ALUMINUM (A) OR BRASS (B).
804	NOZZLE PLATE FOR DUPLEX RECEPTACLE. SPECIFY ALUMINUM (A) OR BRASS (B).
805	NOZZLE PLATE FOR SINGLE OR DUAL PHONE LINES. SPECIFY ALUMINUM (A) OR BRASS (B).
806	NOZZLE PLATE FOR SINGLE RECEPTACLE OR CABLE. SPECIFY ALUMINUM (A) OR BRASS (B).
807-GFI	NOZZLE PLATE FOR GFI RECEPTACLE. SPECIFY ALUMINUM (A) OR BRASS (B).
808	NOZZLE PLATE, WILL ACCOMMODATE (1) CAT. 5 AND (1) COMPUTER CONNECTOR. STAINLESS STEEL ONLY.

710



711



712



807-GFI

803



805

806

804



713-GFI

714S

808



- 1101Series
- SH-1101Series
- 32Series
- FFBSeries
- SBSeries
- NOZZLESeries

Replacement Plugs

CATALOG#	DESCRIPTION
6410-1/2	BRASS 2" - 1/2" COMBINATION PLUG
6410-3/4	BRASS 2" - 3/4" COMBINATION PLUG
6410-1	BRASS 2" - 1" COMBINATION PLUG
6207	BRASS 2" CLOSE UP PLUG
6208	BRASS 1/2" CLOSE UP PLUG
6210	BRASS 3/4" CLOSE UP PLUG
6211	BRASS 1" CLOSE UP PLUG
6213	BRASS 1 1/2" CLOSE UP PLUG (DUPLEX COVERS)

6410-1/2



6410-3/4



6410-1



6207



6208



6210



6211



6213



1101Series
 SH-1101Series
 32Series
 FFBSeries
 SBSeries
 NOZZLESeries

Crossovers

LEW	STEEL CITY	HUBBELL	WALKER	RACO
CB-704-NP	NA	SA6686	NA	NA
CB-709	NA	SA6688	NA	NA
CF-1101	P-64-CP	SB3083	817C	6292
CF-1101-CP	P-64-LCP	S3083	NA	5595
CF-1102	P-64-2G-CP	SB3084	827C	6293
CF-1102-CP	P-64-2LCP	S3084	NA	5596
CF-1103	P-64-3G-CP	SB3085	837C	6294
CF-1103-CP	P-64-3LCP	S3085	NA	5597
CF-6264	P-64-4G-CP	NA	NA	NA
DCF-1	P-60-CP	S3082	NA	6235
DFB-1	P-60-GFCI	NA	895TGFI	NA
DFB-LR	P-60-DS	S3925	895T	6249
FDN-300	SFH-50-BASE	SC3098	505HB	6300
SH-1101-58	841SC	B2414	880CM1	5562 & 5565
SH-6262-58	842SC	B4214	880CM2	5569 & 5572
SH-6263-58	843SC	B4314	880CM3	5575 & 5578
332-58	NA	B2524	NA	NA
523-DP	P60-DU	S3725	895TSP	6284
524	P60-1/2-2	NA	896TCK-1/2	NA
524-3/4	P60-3/4-2	S2525	896TCK-3/4	6287
524-1	NA	S2725	896TCK-1	6285
532-58	601	B2503	NA	6263
532-SB-58	602SC	B2537	889B	6263
532-XD-58	NA	B2506	NA	NA
710	NA	S82	NA	NA
711	NA	S701	NA	NA
712	NA	S23	NA	NA
713-GFI	NA	S262	NA	NA
803	SFH-50-BLCOV	SS309B	500B	6310
804	SFH-50-DUPCOV	SS309D	500DR	6313
805	NA	SS309SF	NA	6315
806	SFH-50-TELCOV	SS309T	500T	6312
807-GFI	NA	SS309DS	500-GFI	6314
1101-58	641	B2436	880CS1	5562 & 5564
1102-58	642	B4233	880CS2	5569 & 5571
1103-58	643	B4333	880CS3	5575 & 5577
6264-58	644	NA	NA	NA
6304-DFB-1	P64-GFCI	S3826	828GFI	NA
6304-DFB-LR	P64-DS	S3825	828R	5580
6304-DP	P64-DU	S3625	828P	5588
6304-S	P64-1/2-2	NA	829CK-1/2	NA
6304-S-3/4	P64-3/4-2	S2425	829CK-3/4	5591
6304-S-1	NA	S2625	829CK-1	5589

Commercial

LEW ELECTRIC FLOOR BOXES & FITTINGS COMPANY



**LEW ELECTRIC FLOOR BOXES
& ELECTRICAL FITTINGS CO.**

1801 W. St. Charles Rd. Maywood, IL 60153

PHONE: 708-345-2075

FAX: 708-345-6490

WWW.LEWELECTRIC.COM

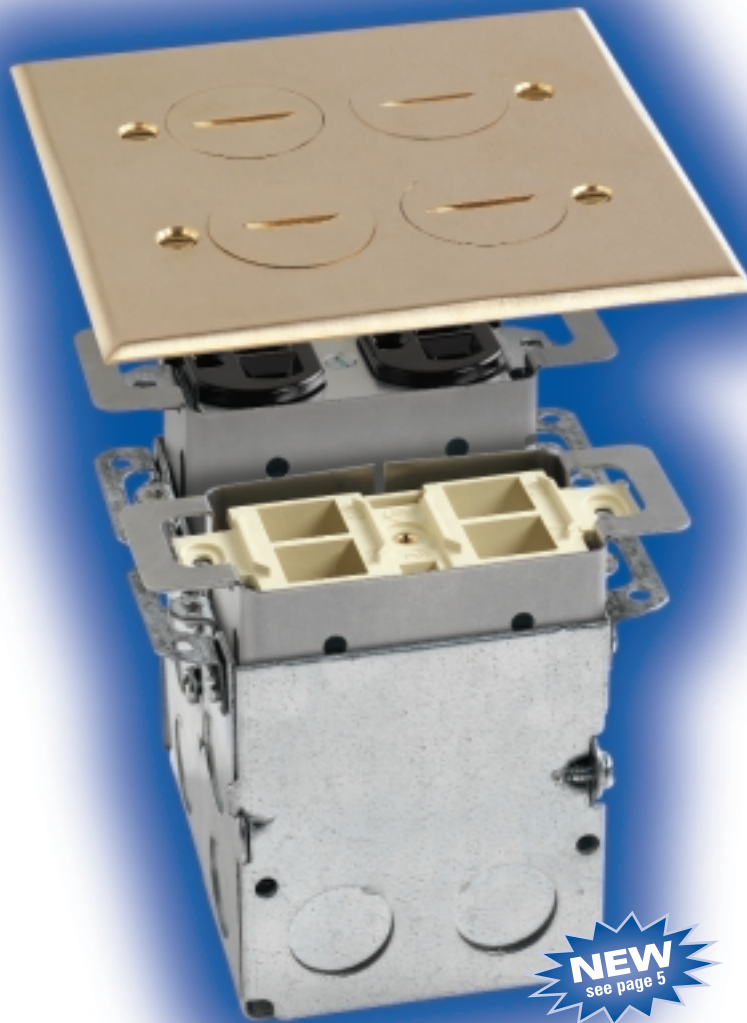
E-MAIL: sales@lewelectric.com

Residential

LEW ELECTRIC FITTINGS COMPANY

SERVING THE ELECTRICAL INDUSTRY SINCE 1901

Log on
for complete
www.lewelectric.com
line catalog and
specifications



NEW
see page 5

612Series
RRPSeries
SWBSeries
812Series
1101-SPSeries
512Series

Catalog #405R
www.lewelectric.com



- 612Series
- RRP Series
- SWB Series
- 812Series
- 1101-SP Series
- 512Series



« 812-DFB; page 6



SWB-4-PQ; page 5 »



« TCP-2-LR-A; page 8



SWB-1; page 5 »



« SWB-2-NS; page 5



« 612-RSS-2; page 3

WHAT WE DO

We make electrical floor boxes safer to use residentially and commercially—*worldwide*.

We are the market leading provider of residential floor boxes as well as manufacturers of floor boxes for homes, churches, airports, sports stadiums, highways—any type of facility that needs electrical boxes where wall boxes are insufficient.

HISTORY

Lew Electric Fittings Company is a family owned and operated company founded in 1901. Our founder, Jake Lewin, started with only one floor box. “Lew” used incomparable quality in materials and craftsmanship, and insisted on providing personal customer service, turning that one floor box into the largest variety of boxes in the industry today.

TABLE OF CONTENTS

612 Series	3
RRP Series	4
SWB Series	5
812 Series	6-8
1101-SP Series	9
512 Series	10
Crossovers	11

- 612Series
- RRP Series
- SWB Series
- 812 Series
- 1101-SP Series
- 512 Series

612

Boxes and Covers

CATALOG #	DESCRIPTION	DIMENSIONS		CONDUIT OPENINGS	INTERIOR CAPACITY
		A	B		
612-RSS-1*	RECESSED STAMPED STEELBOX ASSEMBLY WITH DFB-1-1/2 BRASS COVER AND 15 AMP RECEPTACLE	5 3/4"	4 3/8"	SIDES (8) 1/2" BOTTOM (1) 1/2"	18 CU. IN.
612-RSS-1-GFI*	RECESSED STAMPED STEELBOX ASSEMBLY WITH DFB-1-1/2 BRASS COVER AND DECORA MOUNTING PLATE	5 3/4"	4 3/8"	SIDES (8) 1/2" BOTTOM (1) 1/2"	18 CU. IN.
612-RSS-1-TEL*	RECESSED STAMPED STEELBOX ASSEMBLY WITH DFB-1-1/2 COVER AND COMMUNICATION MOUNTING PLATE	5 3/4"	4 3/8"	SIDES (8) 1/2" BOTTOM (1) 1/2"	18 CU. IN.
612-RSS-2*	RECESSED STAMPED STEELBOX ASSEMBLY WITH DFB-LR-1/2 BRASS COVER AND 15 AMP RECEPTACLE	5 3/4"	4 3/8"	SIDES (8) 1/2" BOTTOM (1) 1/2"	18 CU. IN.

CATALOG#	DESCRIPTION
DFB-1-1/2	BRASS HINGED 4" COVER (1/4" THICK) FOR DUPLEX WITH 1/2" PLUG FOR DATA/COM
DFB-1-1/2-A	ALUMINUM HINGED 4" COVER (1/4" THICK) FOR DUPLEX WITH 1/2" PLUG FOR DATA/COM
DFB-LR-1/2	BRASS DUAL HINGED COVER (1/4" THICK) FOR DUPLEX WITH 1/2" PLUG FOR DATA/COM
DFB-LR-1/2-A	ALUMINUM DUAL HINGED COVER (1/4" THICK) FOR DUPLEX WITH 1/2" PLUG FOR DATA/COM.

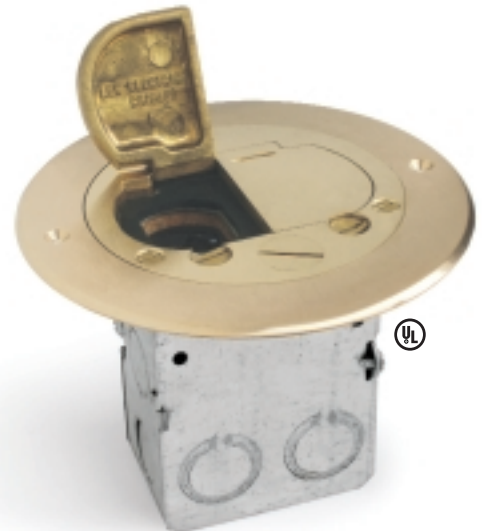
* AVAILABLE IN ALUMINUM FINISH (ADD-A)

DFB-LR-1/2

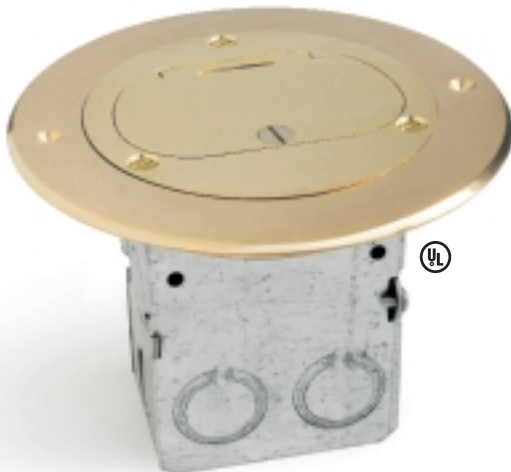
DFB-LR-1/2-A



612-RSS-2



612-RSS-1



DFB-1-1/2

DFB-1-1/2-A

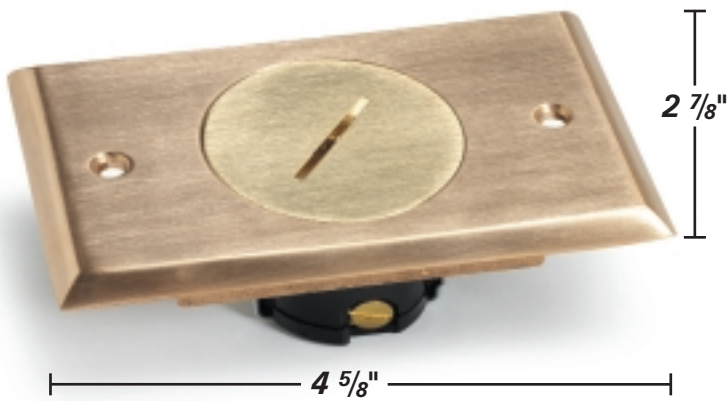


- 612Series
- RRP Series
- SWB Series
- 812Series
- 1101-SP Series
- 512Series

RRR Covers

CATALOG#	DESCRIPTION
RRP-1	RECESSED FLOOR PLATE ASSEMBLY (SINGLE RECEPTACLE)
RRP-1-T	RECESSED FLOOR PLATE ASSEMBLY (COMMUNICATION USE)
RRP-2	RECESSED FLOOR PLATE ASSEMBLY (DUPLIX RECEPTACLE)
RRP-2-T	RECESSED FLOOR PLATE ASSEMBLY (DUPLIX COMMUNICATION USE)
RRP-2-NS	NICKEL-SILVER RECESSED FLOOR PLATE ASSEMBLY (DUPLIX RECEPTACLE)
RRP-2-NS-T	NICKEL-SILVER RECESSED FLOOR PLATE ASSEMBLY (DUPLIX COMMUNICATION USE)

RRP-1



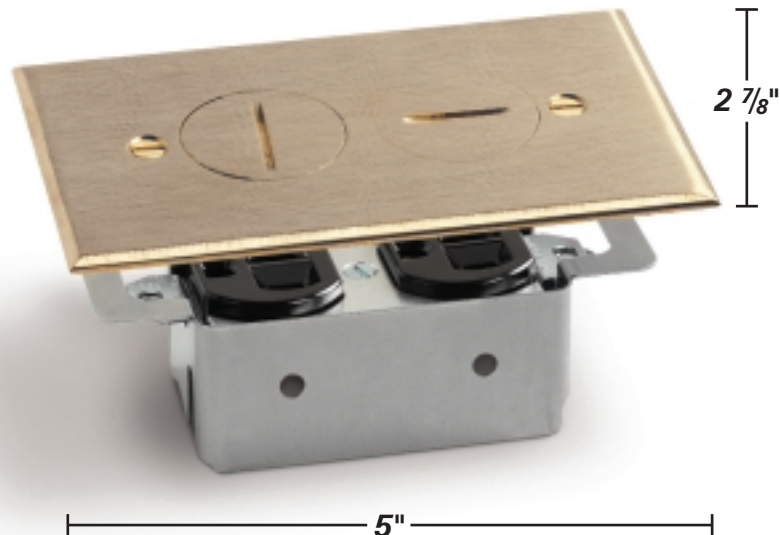
FEATURES AND BENEFITS

- VERSATILE POWER OR COMMUNICATIONS APPLICATIONS
- 3/4" ADJUSTABLE BRASS SLEEVE
- 3/16" SOLID BRASS COVER
- RECEPTACLE WITH NEOPRENE GASKET INCLUDED
- RECEPTACLE RECESSED 1" BELOW SURFACE COVER
- EXTRA WIDE 2" RECEPTACLE OPENING
- WATER TIGHT ASSEMBLY
- 1/2" CONDUIT KNOCKOUTS

RRP-2-NS



RRP-2



UL & NEMA RECOGNITION

- WATER TIGHT CLOSE UP PLUG UL LISTING# 489H
- BOX UL #729A (FILE #10866)
- RECEPTACLE UL LISTING # 947B
- MEETS NEMA WD1-1983 HEAVY DUTY REQUIREMENT FOR DISPLAY RECEPTACLE

- 612Series
- RRPSeries
- SWBSeries
- 812Series
- 1101-SPSeries
- 512Series

SWB

Boxes and Covers

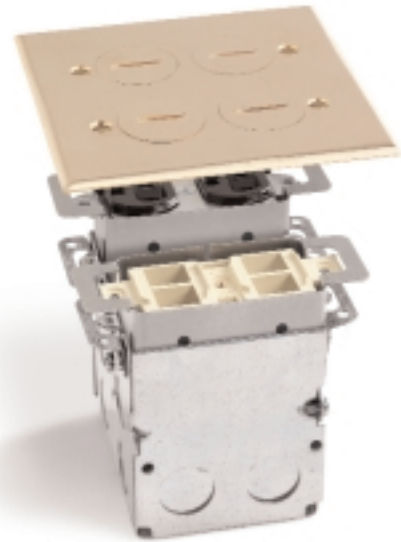
CATALOG#	DESCRIPTION
SWB-1	RECESSED FLOOR PLATE ASSEMBLY (SINGLE RECEPTACLE WITH BOX)
SWB-1-T	RECESSED FLOOR PLATE ASSEMBLY (COMMUNICATION USE WITH BOX)
SWB-2	RECESSED FLOOR PLATE ASSEMBLY (DUPLEX RECEPTACLE WITH BOX)
SWB-2-T	RECESSED FLOOR PLATE ASSEMBLY (DUPLEX COMMUNICATION USE WITH BOX)
SWB-2-NS	NICKEL-SILVER RECESSED FLOOR PLATE ASSEMBLY (DUPLEX RECEPTACLE WITH BOX)
SWB-2-NS-T	NICKEL-SILVER RECESSED FLOOR PLATE ASSEMBLY (DUPLEX COMMUNICATION USE WITH BOX)
SWB-4-PQ	ONE POWER & ONE QUAD PORT
SWB-4-2P	TWO POWER
SWB-4-2Q	TWO QUAD PORTS



FEATURES AND BENEFITS

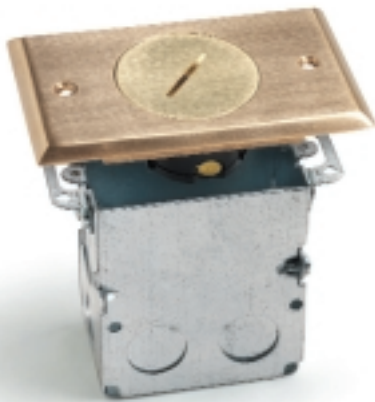
- VERSATILE POWER OR COMMUNICATIONS APPLICATIONS
- 3/4" ADJUSTABLE SLEEVE
- 1/8" SOLID BRASS COVER WITH NEOPRENE GASKET
- RECEPTACLE WITH NEOPRENE GASKET INCLUDED
- WATER TIGHT ASSEMBLY
- 1/2" CONDUIT KNOCKOUTS
- (2) 1 1/4" RECEPTACLE OPENINGS

SWB-4-PQ



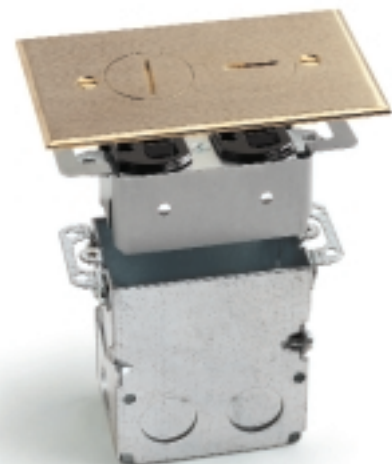
SWB-1

SWB-2-NS



□ 2" W x 3" L x 3 1/2" H □ 18 cu in.

SWB-2



□ 2" W x 3" L x 3 1/2" H □ 18 cu in.

UL & NEMA RECOGNITION

- WATER TIGHT CLOSE UP PLUGS
- BOX UL #729A (FILE #10866)
- RECEPTACLE UL LISTING # 351B
- MEETS NEMA WD1-1983 HEAVY DUTY REQUIREMENT FOR DISPLAY RECEPTACLE

- 612Series
- RRP Series
- SWB Series
- 812 Series
- 1101-SP Series
- 512 Series

812 Boxes and Covers

CATALOG #	DESCRIPTION	DIMENSIONS		CONDUIT OPENINGS	INTERIOR CAPACITY
		A	B		
812	CAST IRON ROUND FLOOR BOX WITH RECEPTACLE. DOES NOT INCLUDE COVER	4"	3 1/8"	SIDES (2)-3/4" & (2)-1/2" BOTTOM (2)-1/2"	14.5 CI
812-DFB	FLOOR BOX FURNISHED WITH 523-DP BRASS COVER & 15 AMP RECEPTACLE	4"	3 1/8"	SIDES (2)-3/4" & (2)-1/2" BOTTOM (2)-1/2"	14.5 CI
812-DFB-NS	FLOOR BOX FURNISHED WITH 523-DP-NS (NICKEL SILVER) COVER & 15 AMP RECEPTACLE	4"	3 1/8"	SIDES (2)-3/4" & (2)-1/2" BOTTOM (2)-1/2"	14.5 CI
812-DFB-LR	FLOOR BOX FURNISHED WITH DFB-LR BRASS COVER & 15 AMP RECEPTACLE	4"	3 3/8"	SIDES (2)-3/4" & (2)-1/2" BOTTOM (2)-1/2"	14.5 CI
812-DFB-LR-A	FLOOR BOX FURNISHED WITH DFB-LR-A (ALUMINUM) COVER & 15 AMP RECEPTACLE	4"	3 3/8"	SIDES (2)-3/4" & (2)-1/2" BOTTOM (2)-1/2"	14.5 CI
812-DFB W/DFB-1	FLOOR BOX FURNISHED WITH DFB-1 BRASS COVER & 15 AMP RECEPTACLE	4"	3 3/8"	SIDES (2)-3/4" & (2)-1/2" BOTTOM (2)-1/2"	14.5 CI
812-DFB W/DFB-1-A	FLOOR BOX FURNISHED WITH DFB-1-A (ALUMINUM) COVER & 15 AMP RECEPTACLE	4"	3 3/8"	SIDES (2)-3/4" & (2)-1/2" BOTTOM (2)-1/2"	14.5 CI
812-DFB-W/524	FLOOR BOX FURNISHED WITH 524 BRASS COVER FOR COM. / DATA	4"	3 1/8"	SIDES (2)-3/4" & (2)-1/2" BOTTOM (2)-1/2"	14.5 CI
812-DFB-W/524-NS	FLOOR BOX FURNISHED WITH 524-NS (NICKEL SILVER) COVER FOR COM. / DATA	4"	3 1/8"	SIDES (2)-3/4" & (2)-1/2" BOTTOM (2)-1/2"	14.5 CI

□ 812 SERIES UL. LISTED FOR USE IN WOOD OR CONCRETE



- 612Series
- RRP Series
- SWB Series
- 812Series
- 1101-SP Series
- 512Series

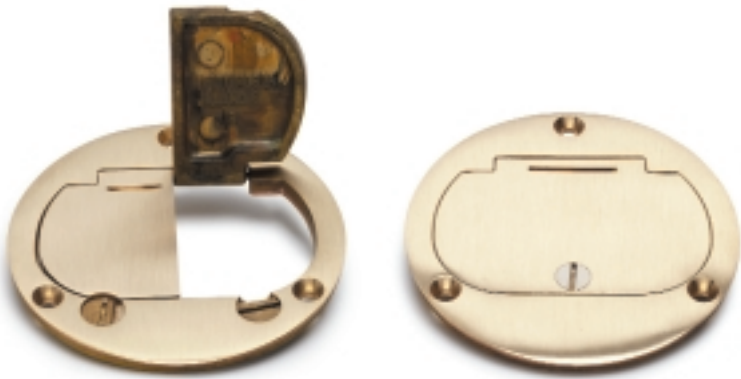
Covers 812

CATALOG #	DESCRIPTION
DFB-LR	BRASS, DUAL HINGED 4" COVER (1/4" THICK) FOR DUPLEX
DFB-LR-A	ALUMINUM, DUAL HINGED 4" COVER (1/4" THICK) FOR DUPLEX
DFB-1	BRASS, HINGED 4" COVER (1/4" THICK) FOR DUPLEX
DFB-1-A	ALUMINUM, HINGED 4" COVER (1/4" THICK) FOR DUPLEX
523-DP	BRASS, 4" COVER (1/8" THICK) WITH (2) 1-1/2" SCREW PLUGS FOR DUPLEX
523-DP-NS	NICKEL SILVER, 4" COVER (1/8" THICK) WITH (2) 1-1/2" SCREW PLUGS FOR DUPLEX
524	BRASS, 4" COVER (1/8" THICK) WITH 2" - 1/2" COMBO PLUG FOR COM. / DATA
524-NS	NICKEL SILVER, 4" COVER (1/8" THICK) WITH 2" - 1/2" COMBO PLUG FOR COM. / DATA

DFB-LR

DFB-1

DFB-LR-A



523-DP

523-DP-NS

524-NS



524

DFB-1-A



- 612Series
- RRPSeries
- SWBSeries
- 812Series
- 1101-SPSeries
- 512Series

812

Flanges and Accessories

CATALOG#	DESCRIPTION
SCF-1	BRASS, FLANGE 5 1/4" DIAMETER
SCF-1-CP	CLEAR PLASTIC, FLANGE 5 3/4" DIAMETER
SCF-1-P	BROWN PLASTIC, FLANGE 5 3/4" DIAMETER
SCF-1A	ALUMINUM, FLANGE 5 1/4" DIAMETER
812-MKM	DOUBLE CUT HOLE SAW 3 1/2" / 4"
812-R	BRASS CONCRETE RING 4 3/8" DIAMETER
TCP-2	BRASS FLANGED COVER, W/ (2) 1 1/2", SCREW PLUGS FOR DUPLEX POWER OR COM./ DATA
TCP-2-LR	SEAMLESS BRASS FLANGED COVER, W/ DUAL FLIP LID AND DUPLEX MOUNT. PLT.
TCP-2-LR-A	SEAMLESS ALUMINUM FLANGED COVER, W/ DUAL FLIP LID AND DUPLEX MOUNT. PLT.
225-R	1/2" SHORT RADIUS BENDER

TCP-2



SCF-1A



SCF-1-CP



SCF-1



SCF-1-P



TCP-2-LR



TCP-2-LR-A



812-R



225-R



812-MKM



- 612Series
- RRP Series
- SWB Series
- 812Series
- 1101-SP Series
- 512Series

Boxes and Covers

1101-SP

CATALOG #	DESCRIPTION	BOX			W/FLANGE			CONDUIT OPENINGS	INTERIOR CAPACITY
		H	W	L	H	W	L		
1101-SP*	SINGLE GANG CAST BOX WITH BRASS CARPET FLANGE	3 1/2"	3 5/16"	4 3/16"	4"	4 1/2"	5 1/2"	SIDES (4)-3/4" BOTTOM-REQUEST	30.8 CI
6262-SP*	TWO GANG PARTITIONED CAST BOX WITH BRASS CARPET FLANGE	3 3/8"	4 1/4"	6 1/2"	4"	5 3/8"	7 1/4"	SIDES (6)-3/4" BOTTOM-REQUEST	62 CI
6263-SP*	THREE GANG PARTITIONED CAST BOX WITH BRASS CARPET FLANGE	3 3/8"	4 1/4"	9 3/8"	4"	5 3/8"	9 3/8"	SIDES (8)-3/4" BOTTOM-REQUEST	112.5 CI
CATALOG#	DESCRIPTION								
6304-DFB-1*	BRASS, HINGED 2 7/8" X 3 7/8" COVER (1/4" THICK) FOR DUPLEX								
6304-DFB-1-TEL*	SAME AS ABOVE BUT FOR COM/DATA								
6304-DFB-1-GFI*	SAME AS ABOVE BUT FOR DECORA RECEPTACLE								
6304-DFB-LR*	BRASS, DUAL HINGED 2 7/8" X 3 7/8" COVER (1/4" THICK) FOR DUPLEX								
6304-BE	BRASS, HINGED 2 7/8" X 3 7/8" COVER (1/4" THICK) FOR DATA OR TWIST LOCK RECEPT. (UP TO 30 AMP)								

*AVAILABLE IN ALUMINUM FINISH (ADD-A)



- 612Series
- RRP Series
- SWB Series
- 812Series
- 1101-SP Series
- 512Series

512 Boxes and Covers

CATALOG #	DESCRIPTION	DIMENSIONS		CONDUIT OPENINGS	INTERIOR CAPACITY
		A	B		
512-U	FLOOR BOX FURNISHED WITH 504 BRASS COVER, 15 AMP RECEPTACLE	3 1/2"	3 1/8"	SIDES (2)-3/4" & (2)-1/2" BOTTOM (2)-1/2"	10 CI
515	FLOOR BOX WITH 503 BRASS COVER FOR COMM. / DATA	3 1/2"	3 1/8"	SIDES (2)-3/4" & (2)-1/2" BOTTOM (2)-1/2"	10 CI
CATALOG #	DESCRIPTION				
CF-1	BRASS FLANGE 3 3/8" DIAMETER				
503	BRASS 3 1/2" COVER WITH 2" - 1/2" COMBO PLUG				
504	BRASS 3 1/2" COVER WITH 2" CLOSE UP PLUG				
530-R	RUBBER BELL NOZZLE				

□ 512 SERIES UL LISTED FOR USE IN WOOD OR CONCRETE

512-U



503

504



CF-1

530-R

515



612Series
 RRPSeries
 SWBSeries
 812Series
 1101-SPSeries
 512Series

Crossovers

LEW	STEEL CITY	HUBBELL	WALKER	RACO
DFB-1	P60-GFCI	NA	895TGFI	NA
DFB-LR	P60-DS	S3925	895T	6249
RRP-1	NA	NA	NA	5236
RRP-2	NA	NA	NA	NA
SCF-1	P60-CP	S3182	NA	6230
SCF-1-CP	P60-LCP	S3079	NA	6233
SWB-1	NA	NA	NA	6236
SWB-2	NA	NA	NA	NA
TCP-2-LR	P60CACP	SF3925	895	NA
TCP-2-LR-A	NA	NA	895-P-AL	NA
504	P67-2	S2930	NA	NA
512-U	672	B2589 + S2930	859SR	6220
523-DP	P60-DU	S3725	895TSP	6284
524	P60-1/2-2	NA	896-TCK-1/2	NA
524-3/4	P60-3/4-2	S2525	896-TCK-3/4	6287
524-1	NA	S2725	896-TCK-1	6285
812DFB	NA	B2588275+S3725	859+895TSP	6223+6284
812DFB-LR	NA	B2588275+S3925	859DR	6224
812DFBw/DFB-1	NA	NA	859+895TGFI	NA
812DFBw/524	NA	NA	859+896-TCK-1/2	NA
1101SP	61-W	NA	880W1 + 817C	NA
6262SP	62-W	NA	880W2 + 827C	NA
6263SP	NA	NA	880W3 + 837C	NA
6304DP	P64-DU	S3625	828P	6288
6304DFB-1	P64-GFCI	S3826	828GFI	NA
6304DFB-LR	P64-DS	S3825	828R	6250

Residential

LEW ELECTRIC FITTINGS COMPANY



LEW ELECTRIC FITTINGS CO.

1801 W. St. Charles Rd. Maywood, IL 60153

PHONE: 708-345-2075

FAX: 708-345-6490

WWW.LEWELECTRIC.COM

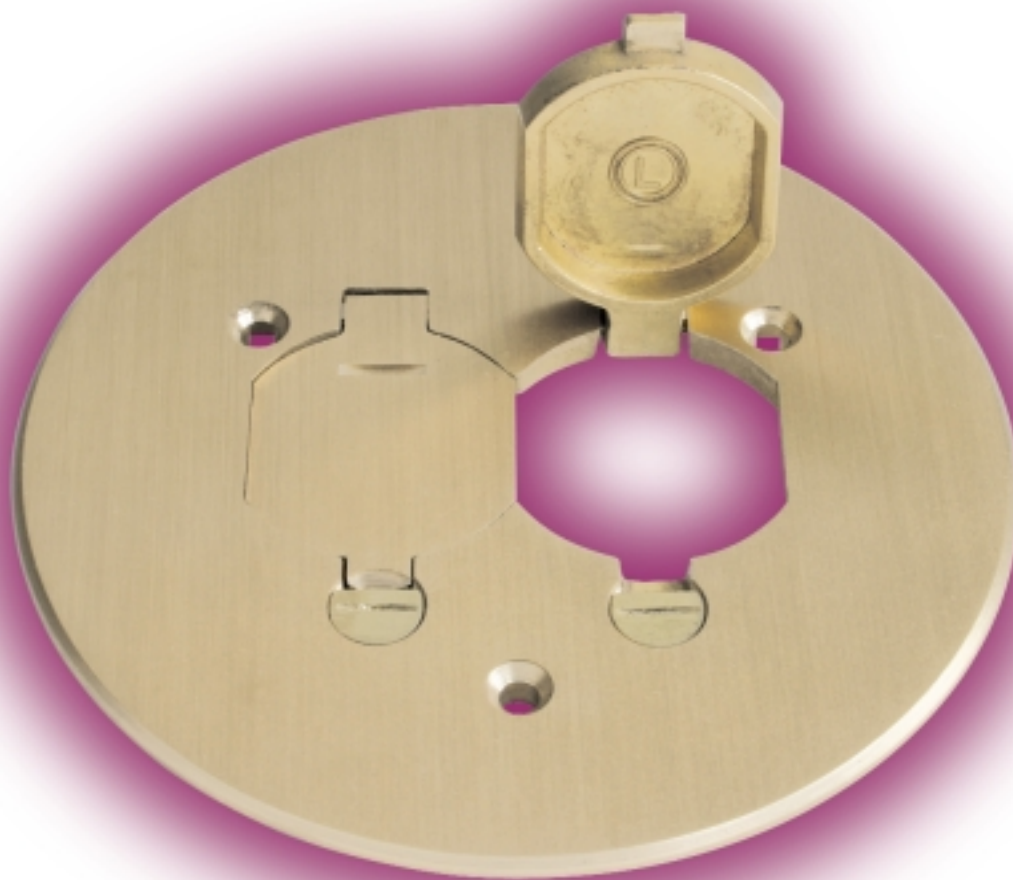
E-MAIL: sales@lewelectric.com

PVC

L LEW ELECTRIC
FITTINGS COMPANY

SERVING THE ELECTRICAL INDUSTRY SINCE 1901

Log on
for complete
www.lewelectric.com
line catalog and
specifications



**PVC Box
Accessories
Covers: Single
Covers: Multi**

Catalog #904P
www.lewelectric.com



PVC Box
Accessories
Covers: Single
Covers: Multi

FEATURES & BENEFITS

- UL LISTED
- ECONOMICAL NONMETALLIC PVC CONSTRUCTION
- UNIVERSAL ADAPTER RING FOR LEW METALLIC & NON-METALLIC COVERS
- ADAPTS TO ANY 4" INSIDE DIAMETER PLASTIC FLOOR BOX
- CAN BE ORDERED WITH (LEW PART #FBLEW) OR WITHOUT (LEW PART #FB) ADAPTER RING (LEW PART #LRA)
- LEW PART # "Y-CONN" AVAILABLE TO ENABLE THE ABILITY TO LOOP CONNECTIONS
- ALL LEW ROUND PVC FLOOR BOXES INCLUDE (4) 3/4", (2) 1" CLOSE UP PLUGS, & CONCRETE COVER CAP
- ALL LEW ELECTRIC ROUND PVC FLOOR BOXES INCLUDE PRE-FORMED SLOTS WHICH ALLOWS FOR ECONOMICAL & EASY PARTITIONING BETWEEN HIGH (POWER) AND LOW (COMMUNICATIONS) TENSION IN THE SAME BOX!



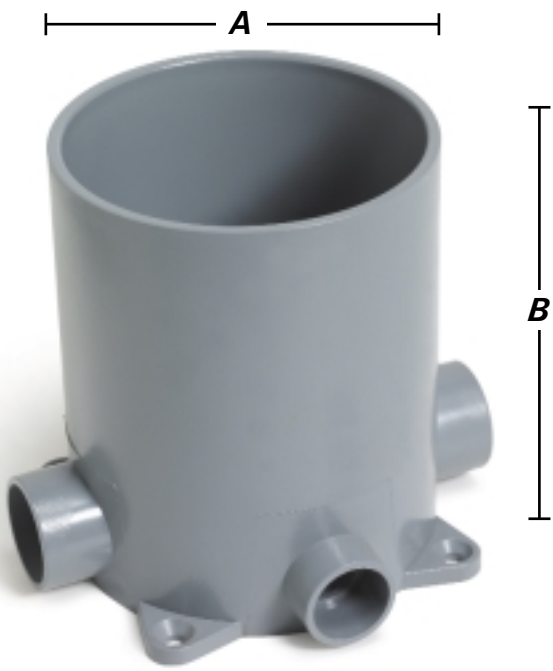
PVC Box	3
Accessories	3
Covers: Single Service	4
Covers: Multi-Service	6
Crossovers	7

•PVC Box
Accessories
Covers: Single
Covers: Multi

Box & Accessories

CATALOG #	DESCRIPTION	DIMENSIONS		INTERIOR CAPACITY
		A	B	
FB	ROUND PVC BOX WITH (4) 3/4" HUBS, (2) 1" HUBS, & PRE FORMED PARTITIONING SLOT (SLIDE <i>NOT</i> INCLUDED) ADAPTER RING <i>NOT</i> INCLUDED	4 9/16"	6"	90 CU. IN. (15.5/IN.)
FBLEW	ROUND PVC BOX WITH (4) 3/4" HUBS, (2) 1" HUBS, & PRE FORMED PARTITIONING SLOT (SLIDE <i>NOT</i> INCLUDED) ADAPTER RING INCLUDED	4 9/16"	6"	90 CU. IN. (15.5/IN.)
CATALOG#	DESCRIPTION			
LRA	LEVELING RING ADAPTER FOR ROUND FLANGED COVER PLATES			
SLIDE	SLIDE PARTITION FOR FB & FBLEW FLOOR BOXES			
Y-CONN	LOOPING CONNECTOR FOR FB & FBLEW FLOOR BOXES			

FB



Y-CONN



LRA



SLIDE



**PVC Box
Accessories**
• Covers: Single
Covers: Multi

PVC Covers: Single Service

CATALOG#	DESCRIPTION
DCF-1-X	BRASS FLANGED COVER, W/ SINGLE FLIP LID & DUPLEX MOUNT. PLT.
DCF-1-X-GFI	BRASS FLANGED COVER, W/ SINGLE FLIP LID & GFI/ DECORA MOUNT. PLT.
DCF-1-X-A	*ALUMINUM FLANGED COVER, 5 1/4" DIA., W/ SINGLE FLIP LID & DUPLEX MOUNT. PLT.
DCF-1-X-A-GFI	*ALUMINUM FLANGED COVER, 5 1/4", W/ SINGLE FLIP LID & GFI/ DECORA MOUNT. PLT
DCF-1-X-LR	BRASS FLANGED COVER, W/ DUAL FLIP LID & DUPLEX MOUNT. PLT.
DCF-1-X-LR-A	*ALUMINUM FLANGED COVER, 5 1/4" DIA., W/ DUAL FLIP LID & DUPLEX MOUNT. PLT
TCP-1	BRASS FLANGED COVER, W/ 2" – 1/2" COMBO PLUG FOR COM/DATA. OR SINGLE RECEPT.
TCP-1-3/4"	BRASS FLANGED COVER, W/ 2" – 3/4" COMBO PLUG FOR COM/DATA. OR SINGLE RECEPT.
TCP-1-1"	BRASS FLANGED COVER, W/ 2" – 1" COMBO PLUG FOR COM/DATA OR SINGLE RECEPT.
TCP-2	BRASS FLANGED COVER, W/ (2) 1 1/2", SCREW PLUGS FOR DUPLEX POWER OR COM./ DATA
TCP-2-LR	SEAMLESS BRASS FLANGED COVER, W/ DUAL FLIP LID AND DUPLEX MOUNT. PLT.
TCP-2-LR-A	(AVAILABLE 02/2005) SEAMLESS ALUMINUM FLANGED COVER, W/ DUAL FLIP LID AND DUPLEX MOUNT. PLT.

□ ALL COVERS EXCEPT WHERE INDICATED BY (*) ARE 5 3/4" IN DIA.

DCF-1-X



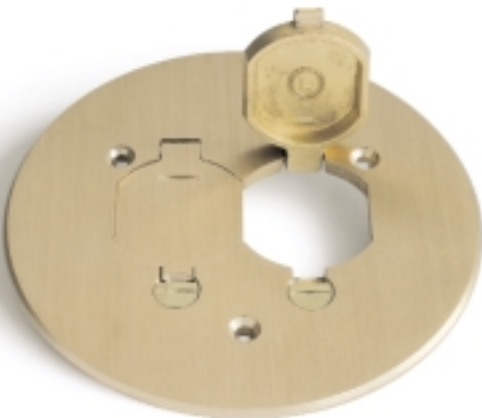
DCF-1-X-A



DCF-1-X-LR



TCP-2-LR



TCP-2-LR-A



AVAILABLE
02/2005

DCF-1-X-LR-A



TCP-1



TCP-2



**PVC Box
Accessories**
• Covers: Single
Covers: Multi

Covers: Single Service

CATALOG#	DESCRIPTION
PFC-B	BROWN PLASTIC FLANGED COVER, W/ SINGLE FLIP LID & DUPLEX MOUNT. PLT.
PFC-B-GFI	BROWN PLASTIC FLANGED COVER, W/ SINGLE FLIP LID & GFI/ DECORA MOUNT. PLT.
PFC-B-TEL	BROWN PLASTIC FLANGED COVER, W/ SINGLE FLIP LID & SINGLE RECEPT / DATA PLT.
PFC-E	EBONY PLASTIC FLANGED COVER, W/ SINGLE FLIP LID & DUPLEX MOUNT. PLT.
PFC-E-GFI	EBONY PLASTIC FLANGED COVER, W/ SINGLE FLIP LID & GFI/ DECORA MOUNT. PLT.
PFC-E-TEL	EBONY PLASTIC FLANGED COVER, W/ SINGLE FLIP LID & SINGLE RECEPT / DATA PLT.
PFC-G	GOLD PLASTIC FLANGED COVER, W/ SINGLE FLIP LID & DUPLEX MOUNT. PLT.
PFC-G-GFI	GOLD PLASTIC FLANGED COVER, W/ SINGLE FLIP LID & GFI/ DECORA MOUNT. PLT.
PFC-G-TEL	GOLD PLASTIC FLANGED COVER, W/ SINGLE FLIP LID & SINGLE RECEPT / DATA PLT.
PFC-S	GRAY PLASTIC FLANGED COVER , W/ SINGLE FLIP LID & DUPLEX MOUNT. PLT.
PFC-S-GFI	GRAY PLASTIC FLANGED COVER, W/ SINGLE FLIP LID & GFI/ DECORA MOUNT. PLT.
PFC-S-TEL	GRAY PLASTIC FLANGED COVER, W/ SINGLE FLIP LID & SINGLE RECEPT / DATA PLT.
PFC-T	TAN PLASTIC FLANGED COVER,W/ SINGLE FLIP LID & DUPLEX MOUNT. PLT.
PFC-T-GFI	TAN PLASTIC FLANGED COVER, W/ SINGLE FLIP LID & GFI/ DECORA MOUNT. PLT.
PFC-T-TEL	TAN PLASTIC FLANGED COVER, W/ SINGLE FLIP LID & SINGLE RECEPT / DATA PLT.
PFC-W	WHITE PLASTIC FLANGED COVER , W/ SINGLE FLIP LID & DUPLEX MOUNT. PLT.
PFC-W-GFI	WHITE PLASTIC FLANGED COVER, W/ SINGLE FLIP LID & GFI/ DECORA MOUNT. PLT.
PFC-W-TEL	WHITE PLASTIC FLANGED COVER, W/ SINGLE FLIP LID & SINGLE RECEPT / DATA PLT.

□ ALL COVERS ARE 5 3/4" DIA.

PFC-B



PFC-E



PFC-G



PFC-S



PFC-T



PFC-W



PVC Box
Accessories
Covers: Single
•Covers: Multi

PVC Covers: Multi-Service

CATALOG#	DESCRIPTION
PFC-B	BROWN PLASTIC FLANGED COVER, W/ SINGLE FLIP LID, DUPLEX MOUNT. PLT., & (2) 1/2" PLUGS FOR COM./ DATA
PFC-B-GFI	BROWN PLASTIC FLANGED COVER, W/ SINGLE FLIP LID, GFI/ DECORA MOUNT. PLT., & (2) 1/2" PLUGS FOR COM./ DATA
PFC-B-TEL	BROWN PLASTIC FLANGED COVER, W/ SINGLE FLIP LID, SINGLE RECEPT/ DATA PLT., & (2) 1/2" PLUGS FOR COM./ DATA
PFC-E	EBONY PLASTIC FLANGED COVER, W/ SINGLE FLIP LID, DUPLEX MOUNT. PLT., & (2) 1/2" PLUGS FOR COM./ DATA
PFC-E-GFI	EBONY PLASTIC FLANGED COVER, W/ SINGLE FLIP LID, GFI/ DECORA MOUNT. PLT., & (2) 1/2" PLUGS FOR COM./ DATA
PFC-E-TEL	EBONY PLASTIC FLANGED COVER, W/ SINGLE FLIP LID, SINGLE RECEPT/ DATA PLT., & (2) 1/2" PLUGS FOR COM./ DATA
PFC-G	GOLD PLASTIC FLANGED COVER, W/ SINGLE FLIP LID, DUPLEX MOUNT. PLT., & (2) 1/2" PLUGS FOR COM./ DATA
PFC-G-GFI	GOLD PLASTIC FLANGED COVER, W/ SINGLE FLIP LID, GFI/ DECORA MOUNT. PLT., & (2) 1/2" PLUGS FOR COM./ DATA
PFC-G-TEL	GOLD PLASTIC FLANGED COVER, W/ SINGLE FLIP LID, SINGLE RECEPT/ DATA PLT., & (2) 1/2" PLUGS FOR COM./ DATA
PFC-S	GRAY PLASTIC FLANGED COVER, W/ SINGLE FLIP LID, DUPLEX MOUNT. PLT., & (2) 1/2" PLUGS FOR COM./ DATA
PFC-S-GFI	GRAY PLASTIC FLANGED COVER, W/ SINGLE FLIP LID, GFI/ DECORA MOUNT. PLT., & (2) 1/2" PLUGS FOR COM./ DATA
PFC-S-TEL	GRAY PLASTIC FLANGED COVER, W/ SINGLE FLIP LID, SINGLE RECEPT/ DATA PLT., & (2) 1/2" PLUGS FOR COM./ DATA
PFC-T	TAN PLASTIC FLANGED COVER, W/ SINGLE FLIP LID, DUPLEX MOUNT. PLT., & (2) 1/2" PLUGS FOR COM./ DATA
PFC-T-GFI	TAN PLASTIC FLANGED COVER, W/ SINGLE FLIP LID, GFI/ DECORA MOUNT. PLT., & (2) 1/2" PLUGS FOR COM./ DATA
PFC-T-TEL	TAN PLASTIC FLANGED COVER, W/ SINGLE FLIP LID, SINGLE RECEPT/ DATA PLT., & (2) 1/2" PLUGS FOR COM./ DATA
PFC-W	WHITE PLASTIC FLANGED COVER, W/ SINGLE FLIP LID, DUPLEX MOUNT. PLT., & (2) 1/2" PLUGS FOR COM./ DATA
PFC-W-GFI	WHITE PLASTIC FLANGED COVER, W/ SINGLE FLIP LID, GFI/ DECORA MOUNT. PLT., & (2) 1/2" PLUGS FOR COM./ DATA
PFC-W-TEL	WHITE PLASTIC FLANGED COVER, W/ SINGLE FLIP LID, SINGLE RECEPT/ DATA PLT., & (2) 1/2" PLUGS FOR COM./ DATA
TCP-1-PC	BRASS FLANGED COVER, W/ 2" – 1/2" COMBO PLUG FOR COM/DATA. OR SINGLE RECEPT., & (2) 1/2" PLUGS FOR COM./ DATA
TCP-1-PC-3/4"	BRASS FLANGED COVER, W/ 2" – 3/4" COMBO PLUG FOR COM/DATA. OR SINGLE RECEPT., & (2) 1/2" PLUGS FOR COM./ DATA
TCP-1-PC-1"	BRASS FLANGED COVER, W/ 2" – 1" COMBO PLUG FOR COM/ DATA OR SINGLE RECEPT., & (2) 1/2" PLUGS FOR COM./ DATA
TCP-2-PC	BRASS FLANGED COVER, W/ (2) 1 1/2" SCREW PLUGS FOR DUPLEX POWER OR COM./DATA., & (2) 1/2" PLUGS FOR COM./ DATA

□ ALL COVERS ARE 5 3/4" DIA.



**PVC Box
Accessories
Covers: Single
Covers: Multi**

Crossovers

LEW	CARLON	KRAYLOY /SCEPTER	HUBBELL	WALKER	STEEL CITY	RACO
DCF-1-X	E97BR	DFL-1	NA	895GFI	P-60 DRP-60-CP	NA
DCF-1-X-A	NA	NA	NA	NA	P60CPAL+P60DRAL	NA
DCF-1-XLR	NA	DFL-2	SF3925	895	P60-CACP	5549
DCF-1-XLR-A	NA	NA	SA3182+SA3925	NA	P60-CACPAL	NA
FB	E971FB	FB	PFB1	881	68P	5511
FBLEW	NA	FBKIT	NA	882C	NA	NA
LRA	E97ABR2	LRA-U	PFBA1	881ADP	68-PAR	5579
PFC-B	E97DSB	FBDRCB	PFBCBR	895P-BRN	P-68-DRC-BRN	NA
PFC-T	E97DSC	NA	NA	NA	P68-DRC-BGE	NA
PFC-E	NA	NA	PFBCBL	NA	NA	NA
PFC-G	E97DSGP	FBDRCG	NA	895P-BRZ	NA	5599
PFC-S	E97DSS	NA	PFBCGY	895P-AL	P68-DRC-GRY	NA
PFC-W	E97DSI	NA	PFBCI	NA	NA	5561
SLIDE	E973K	FBUDK	PFBT1	881DIV	NA	5534
TCP-1	E97BRG	SSC	SF2925	896CK-1/2	P60-1/2-2 P-60-CP	5587
TCP-1-3/4"	NA	NA	SF2525	896CK-3/4	P-60-3/4-2-CACP	NA
TCP-1-1"	NA	NA	SF2725	896CK-1	P60-CP+P60-1	NA
TCP-1-PC	NA	SSC-P/C	NA	NA	NA	NA
TCP-2	NA	DSC	S3082+S3725	895SP	P-60-DUP-60-CP	5584
TCP-2-LR	NA	DFL-2	SF3925	895	P60-CACP	5549
TCP-2-LR-A	NA	NA	NA	NA	P60-CACPAL	NA
TCP-2-PC	NA	DSC-P/C	NA	NA	NA	NA
Y-CONN	E972Y	FBYC	PFBYA1	NA	NA	5574
PFC-B-GFI	NA	NA	NA	NA	NA	NA
PFC-B-TEL	E97SSRB	NA	NA	896PCK-BRN	P68-FSC-BRN	NA
PFC-T-GFI	NA	NA	NA	NA	NA	NA
PFC-T-TEL	E97SSRC	NA	NA	NA	P68-FSC-BGE	NA
PFC-E-GFI	NA	NA	NA	NA	NA	NA
PFC-E-TEL	NA	NA	NA	896PCK-BLK	NA	NA
PFC-G-GFI	NA	NA	NA	NA	NA	NA
PFC-G-TEL	NA	NA	NA	896PCK-BRZ	NA	NA
PFC-S-GFI	NA	NA	NA	NA	NA	NA
PFC-S-TEL	E97SSRS	NA	NA	896PCK-AL	P68-FSC-GRY	NA
PFC-W-GFI	NA	NA	NA	NA	NA	NA
PFC-W-TEL	NA	NA	NA	NA	NA	NA

PVC

LEW ELECTRIC FITTINGS COMPANY



LEW ELECTRIC FITTINGS CO.

1801 W. St. Charles Rd. Maywood, IL 60153

PHONE: 708-345-2075

FAX: 708-345-6490

WWW.LEWELECTRIC.COM

E-MAIL: sales@lewelectric.com

Junction Box

L LEW ELECTRIC FITTINGS COMPANY

SERVING THE ELECTRICAL INDUSTRY SINCE 1901

Log on
for complete
www.lewelectric.com
line catalog and
specifications



**J-Box Type
Customizing
Drilling
Ordering Info**

Catalog #103J
www.lewelectric.com



2
**J-Box Type
Customizing
Drilling
Ordering Info**

FEATURES & BENEFITS

- HEAVY DUTY CAST-IRON CONSTRUCTION
- DUST-TIGHT, RAIN-TIGHT, WATER-TIGHT NEMA 250-1997 TYPE 4 COMPLIANT
- FINISHES ARE ALL HOT-DIPPED GALVANIZED AND COMPLY WITH NEMA REQUIREMENTS 3.5.6 FOR CORROSION PROTECTION
- EASY TO USE TEMPLATE AND SCHEDULE FOR ALL DRILLING AND TAPPING NEEDS



Determine the type of J-Box 3
Customizing the J-Box 4
(Drillings, Tappings, and Mounting)
Drilling Template 5
Ordering Information 6-7

Determine the type of J-Box

LEW ELECTRIC OFFERS A WIDE VARIETY OF CAST IRON JUNCTION BOXES.

GENERAL PURPOSE CAST IRON JUNCTION BOXES — *LEW ELECTRIC CIG SERIES*
 STANDARD RECESSED CAST IRON JUNCTION BOXES — *LEW ELECTRIC REFL SERIES*
 HINGED RECESSED CAST IRON JUNCTION BOXES — *LEW ELECTRIC BE SERIES*
 SAFETY TREAD CAST IRON JUNCTION BOXES — *LEW ELECTRIC X SERIES*
 MALIBU STYLE CAST IRON JUNCTION BOXES — *LEW ELECTRIC 1000 SERIES*

ALL OF OUR JUNCTION BOXES ARE:

- * CONSTRUCTED OF HEAVY DUTY CAST IRON,
- * HOT-DIPPED GALVANIZED (FOR EXTRA CORROSION RESISTANCE);
- * DUST-TIGHT, RAIN-TIGHT, WATER-TIGHT NEMA 250-1997 TYPE 4 COMPLIANT.

CIG SERIES

Lew Electric offers the widest variety of sizes for general purpose junction boxes. Designed for outdoor (direct burial) or indoor use, the *CIG Series* are sold complete with galvanized cast iron or steel covers, gasket, and stainless steel screws.

REFL SERIES

This amazing cast iron junction box is fully adjustable bilaterally. When the floor box is installed the cover has the ability to transform into a tile tray which will accommodate 1/8" floor coverings. This style of cast iron junction box is very adaptable to shopping centers, theaters, office buildings and other major industrial and commercial buildings. Lew Electric *REFL Series* floor boxes are sold complete with aluminum cover, gasket, tile tray, aluminum flange, & stainless steel screws.

BE SERIES

This revolutionary cast iron junction box has all of the advantages of the above-mentioned *REFL Series* junction boxes with the added convenience of having a hinged lockable cover. Lew Electric *BE Series* floor boxes are sold complete with aluminum cover, gasket, tile tray, aluminum flange, & stainless locking mechanism.

X SERIES

Lew Electric's safety tread floor box are specifically designed to add safety to heavy pedestrian traffic areas. Lew Electric's heavy duty construction accommodates traffic from both pedestrians and vehicles alike. The *X-tread Series* floor boxes are sold complete with safety tread steel cover, gasket and stainless steel screws.

1000 SERIES

Lew Electric's "malibu" style floor box. Accommodates your junction box needs for lighting. *1000 Series* floor boxes are very adaptable for parking garage and outdoor burial applications.

- J-Box Type
- Customizing
- Drilling
- Ordering Info

CUSTOM *Customizing the J-Box*

DRILLINGS AND TAPPINGS

Drilling and tappings are available from Lew Electric for an additional charge. Please refer to figure 2A (below) for Lew Electric's drilling and tapping schedule.

When drilling and tapping is required, you must furnish a drilling template see figure 2B (page 5). Lew Electric is not responsible for incorrect sizes or locations of holes when sketch of drilling template is not submitted.

***** Important Note *****

When drillings and tappings are requested by our customers, it becomes the customer's, not Lew Electric's, responsibility to use water tight fittings and sealants and to comply with NEMA 250-1997 type 4 regulations as well as the requirements set forth by UL standards for fittings for conduit and outlet boxes.

MOUNTING THE BOX

Lew Electric part #1100-E *mounting ears* for cast iron junction boxes are required for the purpose of sealing the cover to the gasket and box and to give the box a NEMA type 4 water-tight rating.

Lew Electric part #1101-L *mounting lugs* can be installed on each corner of the box for the purposes of securing the floor box during a cement pour or to mount the floor box to a wall.

Figure 2a

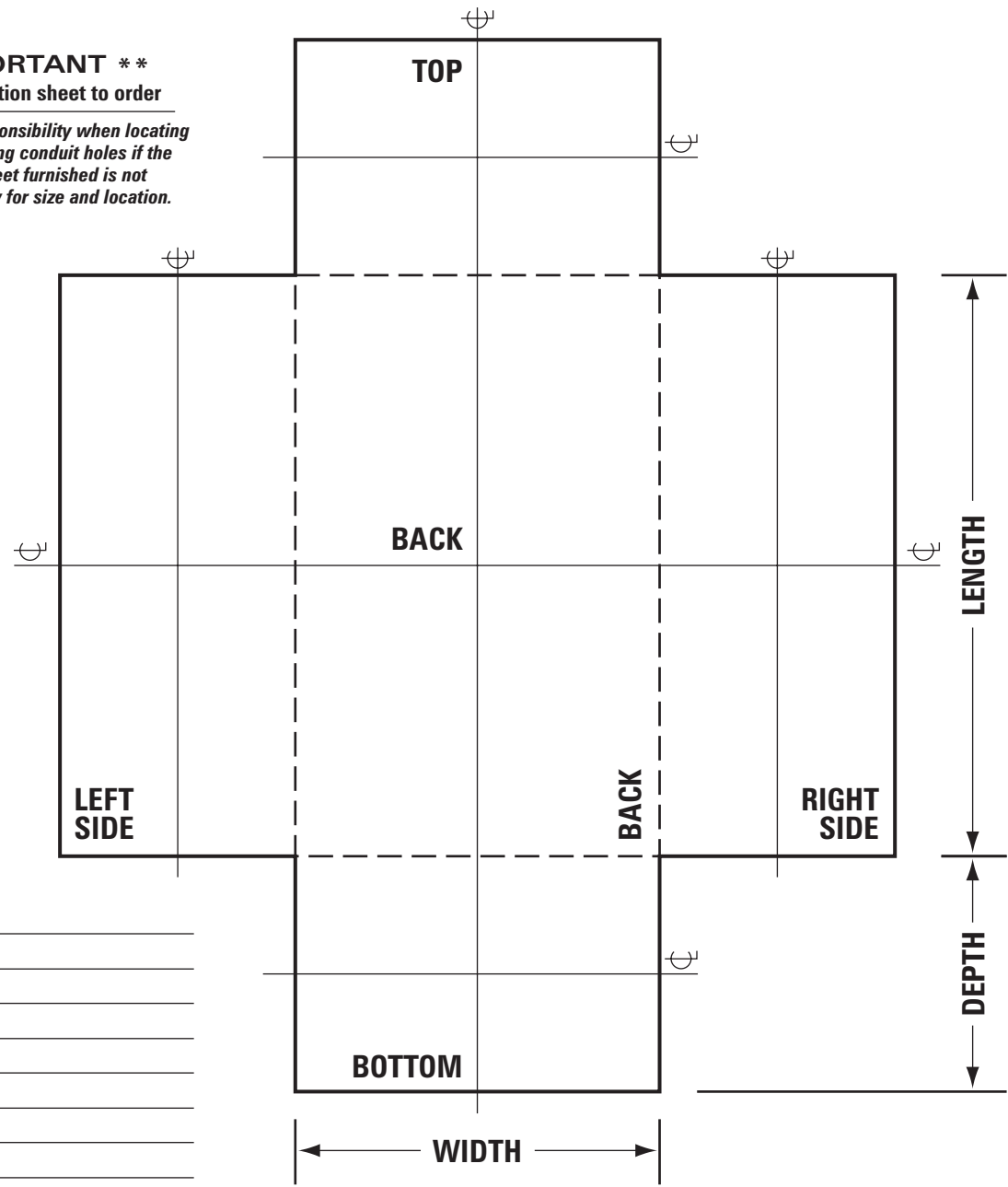
SIZE
1/2"
3/4"
1"
1 1/4"
1 1/2"
2"
2 1/2"
3"
3 1/2" (<i>Slip Hole Only</i>)
4" (<i>Slip Hole Only</i>)

J-Box Type
 Customizing
 • Drilling
 Ordering Info

Drilling Template (Figure 2b)

Cast Iron Junction Boxes TEMPLATE

**** IMPORTANT ****
 Attach instruction sheet to order
 We assume no responsibility when locating
 drilling and tapping conduit holes if the
 instruction sheet furnished is not
 filled out properly for size and location.



Date: _____
 Order No.: _____
 Catalog No.: _____
 Quantity: _____
 Width: _____
 Length: _____
 Depth: _____
 Flanged: _____
 Unflanged: _____
 Slip-Hole: _____
 Drill & Tap: _____

Give Inside Box Dimensions {

****SIGNED** _____

Junction Box

LEW ELECTRIC FITTINGS COMPANY

- J-Box Type
- Customizing
- Drilling
- Ordering Info

BOXES

Unflanged & Malibu

UNFLANGED

CATALOG #	INSIDE DIM (IN.) L x W x D	WALL THICKNESS	O-Z GEDNEY CROSS
443 CIG	4 x 4 x 3	1/4"	YS040403
464 CIG	4 x 6 x 4	3/16"	YS060404
664 CIG	6 x 6 x 4	3/16"	YS060604
666 CIG	6 x 6 x 6	5/16"	YS060606
684 CIG	6 x 8 x 4	1/4"	YS080604
884 CIG	8 x 8 x 4	1/4"	YS080804
886 CIG	8 x 8 x 6	1/4"	YS080806
8124 CIG	8 x 12 x 4	1/4"	YS120804
8126 CIG	8 x 12 x 6	5/16"	YS120806
10104 CIG	10 x 10 x 4	1/4"	YS101004
10106 CIG	10 x 10 x 6	1/4"	YS101006
12124 CIG	12 x 12 x 4	3/8"	YS121204
12126 CIG	12 x 12 x 6	1/4"	YS121206
12128 CIG	12 x 12 x 8	5/16"	YS121208
12186 CIG	12 x 18 x 6	5/16"	YS181206
12188 CIG	12 x 18 x 8	5/16"	YS181208

MALIBU

CATALOG #	OVERALL HEIGHT	TAPPINGS (MAX)	VOLUME
1000	2"	3/4" (1")	15 CU. IN.
1001	2" (Threaded cover)	3/4" (1")	15 CU. IN.
1005	3 7/16"	3/4" (1 1/4")	30 CU. IN.
1006	3 7/16" (Threaded cover)	3/4" (1 1/4")	30 CU. IN.

UNFLANGED



MALIBU 1000



MALIBU 1006



J-Box Type
 Customizing
 Drilling
 • Ordering Info

BOXES

REFL & BE & X-Type

REFL & BE			
<i>CATALOG #</i>	<i>INSIDE DIM (IN.) L x W x D</i>	<i>WALL THICKNESS</i>	<i>O-Z GEDNEY CROSS</i>
REFL 664	6 x 6 x 4	3/16"	YR060604
REFL 666	6 x 6 x 6	5/16"	YR060606
REFL 884	8 x 8 x 4	1/4"	YR080804
REFL 886	8 x 8 x 6	1/4"	YR080806
REFL 8124	8 x 12 x 4	1/4"	YR120804
REFL 8126	8 x 12 x 6	5/16"	YR120806
BE 664	6 x 6 x 4	3/16"	YW060604
BE 666	6 x 6 x 6	5/16"	YW060606
BE 884	8 x 8 x 4	1/4"	YW080804
BE 886	8 x 8 x 6	1/4"	YW080806
BE 8124	8 x 12 x 4	1/4"	YW120804
BE 8126	8 x 12 x 6	5/16"	YW120806
X-TYPE			
<i>CATALOG #</i>	<i>INSIDE DIM (IN.) L x W x D</i>	<i>WALL THICKNESS</i>	<i>O-Z GEDNEY CROSS</i>
664X	6 x 6 x 4	3/16"	YT060604
686X	6 x 8 x 6	5/16"	N/A
888X	8 x 8 x 8	5/16"	YT080808
8126X	8 x 12 x 6	5/16"	YT120806



Junction Box

LEW ELECTRIC FITTINGS COMPANY



LEW ELECTRIC FITTINGS CO.

1801 W. St. Charles Rd. Maywood, IL 60153

PHONE: 708-345-2075

FAX: 708-345-6490

WWW.LEWELECTRIC.COM

E-MAIL: sales@lewelectric.com