

Network Wiring Connectivity

Pass & Seymour



Installation ease and quality construction.

Pass & Seymour/Legrand offers a broad line of network wiring jacks, wall plates, and patch panels to complete your Commercial and Home Systems* installations. These data communications products provide the same ease of installation and quality performance that you've come to expect from P&S.

Keystone Products

Enhanced Keystone product offering includes jacks and adapters that feature quick, snap-in mounting that saves installation time. A flexible modular design allows for fast, easy configuration. Use with TradeMaster® Keystone Wall Plates.



KS58-LA

Keystone Jacks

CATALOG NUMBER	DESCRIPTION	AVAILABLE COLORS
KS68AB_	Keystone RJ45 Category 6, T568A/B Universal Wiring	BK, BL, G, I, LA, OR, RED, W, Y
KS58AB_	Keystone RJ45 Category 5e, T568A/B Universal Wiring	BK, BL, G, I, LA, OR, RED, W, Y
KS6U_	Keystone RJ25C 6P/6C Category 3, USOC Wiring	I, LA, W

Category 6 jack available Fall 2006.



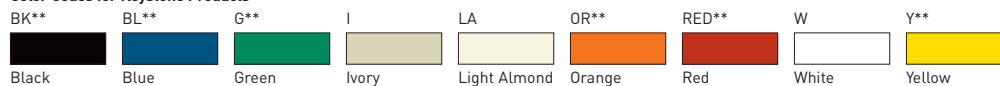
KSFF-LA

Keystone Multimedia & Fiber Adapters

CATALOG NUMBER	DESCRIPTION	AVAILABLE COLORS
KSFF_	Keystone Standard F Connector	I, LA, W
KSFFST_	Keystone Self-Terminating F Connector	I, LA, W
KSBNC_	Keystone BNC Connector	I, LA, W
KS2BP_	Pair of Keystone Binding Posts, Red/Positive, Black/Negative	I, LA, W
KSSV_	Keystone S-Video, 110 Termination	I, LA, W
KSRCAB_	Keystone RCA (Black Insulator) Bulkhead	I, LA, W
KSRCAR_	Keystone RCA (Red Insulator) Bulkhead	I, LA, W
KSRCAY_	Keystone RCA (Yellow Insulator) Bulkhead	I, LA, W
KSRCAF_	Keystone RCA (Red Insulator) to F Connector	I, LA, W
KSSC_	Keystone SC Multimode, Phosphor Bronze Sleeve	I, LA, W
KSST_	Keystone ST Multimode, Phosphor Bronze Sleeve	I, LA, W
KSBL10_	Keystone Blank Inserts (Includes 10 Blanks)	BK, I, LA, W

Replace _ in Catalog Number with Keystone Color Code to designate color.

Color Codes for Keystone Products



**Each sold as a package of 10.



KS2BP-W



KSBL10-W

*For complete line of Home Systems products refer to Section O of the Pass & Seymour/Legrand Catalog.

Activate™ Products

Choose any combination of our Activate™ high performance modular inserts and wall plates for complete multimedia capability at any point of use. Cut installation time, thanks to this front-load, snap-in design.



2A245-CC6



2A245-C5EU

Activate™ Category 6, 5e & USOC Jack Inserts

CATALOG NUMBER	DESCRIPTION	AVAILABLE COLORS
2A145-CC6_	Single Port RJ45 Category 6, T568A/B Universal Wiring	LA†, BK, G, GY, WH
2A245-CC6_	Dual Port RJ45 Category 6, T568A/B Universal Wiring	LA†, BK, G, GY, WH
2A145-C5EU_	Single Port RJ45 Category 5e, T568A/B Universal Wiring	LA†, BK, G, GY, WH
2A245-C5EU_	Dual Port RJ45 Category 5e, T568A/B Universal Wiring	LA†, BK, G, GY, WH
2A145-C3U_	Single Port RJ45 Category 3, T568A/B Universal Wiring	LA†, BK, WH
2A112-U2_	Single Port RJ25C 6P/6C Category 3, USOC Wiring	LA†, WH
2A212-U2_	Dual Port RJ25C 6P/6C Category 3, USOC Wiring	LA†, WH
2A1245-UC5EU_	Dual Port with Category 3 USOC and Category 5e Jack	LA†, WH

Each sold as a package of 10.

Activate™ Multimedia Inserts & Fiber Adapters



2A-1F



2A-1RCA



2A-2ST-MM

CATALOG NUMBER	DESCRIPTION	AVAILABLE COLORS
2A-1F_	Single F Connector Insert	LA†, BK, G, GY, WH
2A-2F_	Dual F Connector Insert	LA†, WH
2A-BNC-F	BNC/F Connector Insert	LA†
2A-2RBBP_	Dual (Red/Black) 3-Way Binding Post Audio Insert	LA†, WH
2A-2RCA110	Dual RCA 110 Insert	LA†
2A-3RCA110_	Triple RCA 110 Insert	LA†, WH
2A-1RCA_	Single RCA Audio Insert	LA†, WH
2A-2RCA_	Dual RCA Audio Insert	LA†, WH
2A-3RCA_	Triple RCA Audio Insert	LA†, WH
2A-1SVHS110	Single Super VHS Video 110 Insert	LA†
2A-1SVHSU	Single Super VHS Video Insert	LA†
2A-2ST-MM_	Dual ST Adapter, Singlemode/Multimode, Phosphor Bronze Sleeves	LA†, WH
2A-2SC_	Duplex SC Adapter, Singlemode/Multimode, Phosphor Bronze Sleeves	LA†, WH
2A-BL_	Blank Insert	LA†, BK, G, GY, WH

Each sold as a package of 10.

Activate™ Wall Plates & Modular Furniture Bezel



AC-SFP

CATALOG NUMBER	DESCRIPTION	AVAILABLE COLORS
AC-SFP_	Single Gang	LA†, WH
AC-HDFP_	Double Gang High-Profile	LA†, WH
AC-SAP_	Single Gang Angled	LA†, WH
AC-DAP_	Double Gang Angled	LA†, WH
AC-SWRP_	Single Gang WallReady™	LA†, WH
AC-MFB_	Modular Furniture Bezel	LA†, BK, G

Replace _ in Catalog Number with Activate™ Color Code to designate color.

† No color code designates Light Almond.

Color Codes for Activate™ Products

†	BK	G	GY	WH
Light Almond	Black	Gray	Light Gray	White

Activate™ Icon Tabs



CATALOG NUMBER	DESCRIPTION	AVAILABLE COLORS
PSDT_	Data Icon Tabs	BK BL BR G GRY I LA OR P RED Y W
PSVT_	Voice Icon Tabs	Black Blue Brown Green Gray Ivory Light Almond Orange Purple Red Yellow White

Each sold as a package of 100.

Replace _ in Catalog Number with Icon Tab Color Code to designate color.

Innovate™ Products

Smooth, polished look fits any décor and matches traditional wiring device wall plates. Modules feature a front-mount, click-in design that remove easily for quick reconfiguration. Built strong to stand up to repeated installations and removals. Virtually unbreakable TradeMaster® Datacom Wall Plates provide better coverage with an extra 3/16" width and height than standard wall plates to reduce time-consuming drywall rework.



S68-LA

Innovate™ Category 6, 5e, 3 & USOC Jacks

CATALOG NUMBER	DESCRIPTION	AVAILABLE COLORS
S68_	RJ45 Category 6, T568A/B Universal Wiring	BK, BL, BR, G, GRY, I, LA, OR, P, RED, W, Y
S58_	RJ45 Category 5e, T568A/B Universal Wiring	BK, BL, BR, G, GRY, I, LA, OR, P, RED, W, Y
S38_	RJ45 Category 3, T568A/B Universal Wiring	BK, GRY, I, LA, W
S6U_	RJ25C 6P/6C Category 3, USOC Wiring	GRY, I, LA, W



S58-LA

Innovate™ Multimedia Modules & Blanks

CATALOG NUMBER	DESCRIPTION	AVAILABLE COLORS
SFF_	Standard F Connector	GRY, I, LA, W
RFCEXT_	Recessed Self-Terminating F-Connector for External Video	BK, I, LA, W
S2BP_	1 Pair of Binding Posts, Red/Positive, Black/Negative	BK, I, LA, W
SBL10_	Blank Inserts (Includes 10 Blanks)	BK, GRY, I, LA, W

Replace _ in Catalog Number with Innovate™ Color Code to designate color.



SFF-LA

Color Codes for Innovate™ Products

BK**	BL**	BR**	G**	GRY**	I	LA	OR**	P**
Black	Blue	Brown	Green	Gray	Ivory	Light Almond	Orange	Purple
RED**	W	Y**						
Red	White	Yellow						

**Each sold as a package of 10.

Multimedia & Decorator Frames



C5EF-LA

CATALOG NUMBER	DESCRIPTION	AVAILABLE COLORS
C5EF_	Category 5e Jack and F Connector	I, LA, W
C25E2F_	2 Category 5e Jacks and 2 F Connectors	I, LA, W
SF326_	3-Port Decorator Frame	I, LA, W

Each sold as a package of 10.

Replace _ in Catalog Number to designate color.



TPD1-LA

TradeMaster® Datacom Wall Plates

CATALOG NUMBER	DESCRIPTION	AVAILABLE COLORS
TPD1_	1-Port TradeMaster Datacom Wall Plate, Single Gang	GRY, I, LA, W
TPD2_	2-Port TradeMaster Datacom Wall Plate, Single Gang	GRY, I, LA, W
TPD3_	3-Port TradeMaster Datacom Wall Plate, Single Gang	GRY, I, LA, W
TPD4_	4-Port TradeMaster Datacom Wall Plate, Single Gang	GRY, I, LA, W
TPD6_	6-Port TradeMaster Datacom Wall Plate, Single Gang	GRY, I, LA, W
TPD9_	9-Port TradeMaster Datacom Wall Plate, Double Gang	GRY, I, LA, W
WMPP-SS	Wall Mount Phone Plate	Stainless Steel

Replace _ in Catalog Number to designate color.

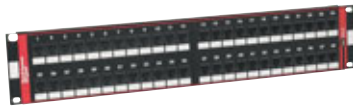


TPD9-LA



Patch Panels

High-performance panels meet the TIA/EIA-568-B.2 standard for connecting hardware, including Addendum 1 for Cat 6 component performance.



48845-CC6

Category 6

CATALOG NUMBER	DESCRIPTION	DIMENSIONS	RACK UNITS
24845-CC6	24-Port T568A/B Universal Wiring	19" x 1.75"	1
48845-CC6	48-Port T568A/B Universal Wiring	19" x 3.50"	2

Category 5e

CATALOG NUMBER	DESCRIPTION	DIMENSIONS	RACK UNITS
12845-C5E-89	12-Port Wall-Mount T568A/B Universal Wiring	2.25" x 10" x 1.625"	—
24845-C5E	24-Port T568A/B Universal Wiring	19" x 1.75"	1
48845-C5E	48-Port T568A/B Universal Wiring	19" x 3.50"	2

Patch Cords

Stranded-wire, twisted-pair construction provides the flexibility to make cross-connections easy.



PSPC5B-7

PSPC5B-5

CATALOG NUMBER	DESCRIPTION	AVAILABLE LENGTHS
PCC6_	Category 6, Gray	3', 5', 7', 10', 15'
PSPC5B_	Category 5e Booted, White	3', 5', 7', 10', 15'

Add desired length to end of Catalog Number to order, example PCC6-10.

TradeMaster® Keystone Wall Plates & Decorator Frames

Virtually unbreakable TradeMaster® Keystone Wall Plates provide better coverage with an extra 3/16" width and height than standard wall plates to reduce time-consuming drywall rework. Available with label windows to help make identification easy.



KTPD1-W



KTPDL1-W



KS226-W

KS426-W

Without Label Windows	With Label Windows	DESCRIPTION	AVAILABLE COLORS
KTPD1_	KTPDL1_	1-Port Keystone Wall Plate	I, LA, W
KTPD2_	KTPDL2_	2-Port Keystone Wall Plate	I, LA, W
KTPD3_	KTPDL3_	3-Port Keystone Wall Plate	I, LA, W
KTPD4_	KTPDL4_	4-Port Keystone Wall Plate	I, LA, W
KTPD6_	KTPDL6_	6-Port Keystone Wall Plate	I, LA, W
KS226_		2-Port Keystone Decorator Frame	I, LA, W
KS326_		3-Port Keystone Decorator Frame	I, LA, W
KS426_		4-Port Keystone Decorator Frame	I, LA, W

Replace _ in Catalog Number to designate color.
Wall plates with label windows available Fall 2006.