

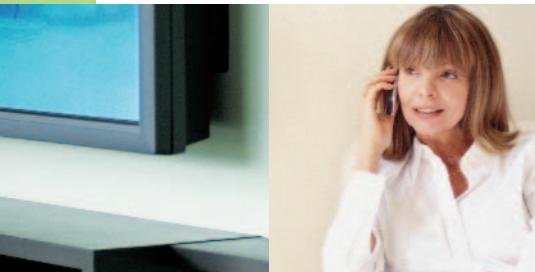


Wiring today's homes to meet the new needs of today's homebuyers — structured wiring systems, wireless access points for data distribution, Category 5 intercom systems and cameras, high efficiency speakers, home theater and multi-room audio, and integration products for seamless connectivity with other systems.

Index

Section	Page Number
Infrastructure	O-4 – O-37
Enclosures, Custom Rack Drawer, Network Centers, Power Management, Keystone Wall Plates & Jacks, Decorator Wall Plates, ValuePort Wall Plates & Outlets, AnyPort Designer Wall Plates, Hide-A-Port Outlets, AnyPort Decorator Outlets, AnyPort Inserts, AnyPort Outlet Kits, Installation Tools, Mounting Plates	
Entertainment	O-38 – O-57
Video Modules, Digital Satellite Modules, Video Engine Module, Video Accessories, lyriQ™ Audio System, evōQ™ Speakers, Impedance Audio System, Home Entertainment Connection Center	
Communications	O-58 – O-73
Combo Modules, Combo Kits, Apartment Kits, Telecom Modules, Telecom Conditioning Units & Accessories, Wireless Access Point, Networking Modules, Intercom System	
Comfort	O-74 – O-95
On-Q Lighting Controller, Advanced Lighting Control (ALC), Power Line Carrier (PLC) Lighting Control, Category 5 Cameras, LCD Display, Home Management System	

Build more solutions with Pass & Seymour/Legrand and On-Q/Legrand product lines.



Three market leaders, one great source.

How can Pass & Seymour/Legrand offer you convenient access to everything you need? We've brought three great companies together – P&S, On-Q, and Greyfox. On-Q Home and Greyfox Home Systems have become On-Q/Legrand – a company providing unmatched systems solutions, effective marketing tools, and product innovations to the connected home.

The dynamics of today's residential market are such that builders, and sometimes even homeowners, play a part in specifying or choosing what products will be installed. With electrical devices from P&S and home systems from On-Q/Legrand, we provide solutions that builders and homeowners demand – from traditional wiring devices to sophisticated home network systems and the capabilities to wire the whole house.

Solutions for the connected home.

The On-Q/Legrand solutions-based product line features structured wiring systems, wireless access points for data distribution, Category 5 intercom systems and cameras, a range of high efficiency speakers, and more audio options including home theater and multi-room audio. On-Q/Legrand will also offer integration products for seamless connectivity with other systems, preparing homes for rapidly emerging technologies.

Wiring two systems has never been easier.

We provide you with everything you need. Training to get you up to speed. Tools that make these electrical and home system upgrades practically sell themselves. Fast installations, so you can do more in less time. And styles and colors that create a consistent look throughout the home.



The support and tools you need.

Find out how rewarding wiring P&S and On-Q/Legrand systems can be. Innovative products you can find all in one location with the assurance that every product in the home's electronic infrastructure will be packed by world-class service from P&S, the manufacturer that helped define superior customer service in the electrical market.

Visit www.passandseymour.com/getonq to learn more about home systems products, sales tools, or to sign up for training. Or simply call 888-451-8903 for a free information packet.



The P&S Better Electrical and On-Q/Legrand catalogs help you provide the electrical and home system solutions today's homeowners demand. For your copies, go to www.passandseymour.com/getonq.



Innovations in home living

A connected home solution for every need and every budget.

Helping homeowners select connected home products is about creating a vision for the buyer. It's about presenting technology as a means to bring convenience, simplicity, and comfort. On-Q/Legrand products are packaged into easy-to-understand lifestyle solutions that customers will relate to and immediately recognize the benefits. The solutions are categorized into three widely recognized lifestyle concepts: Entertainment, Communications, and Comfort.

Entertainment

- Music
- Theater
- Television
- Gaming

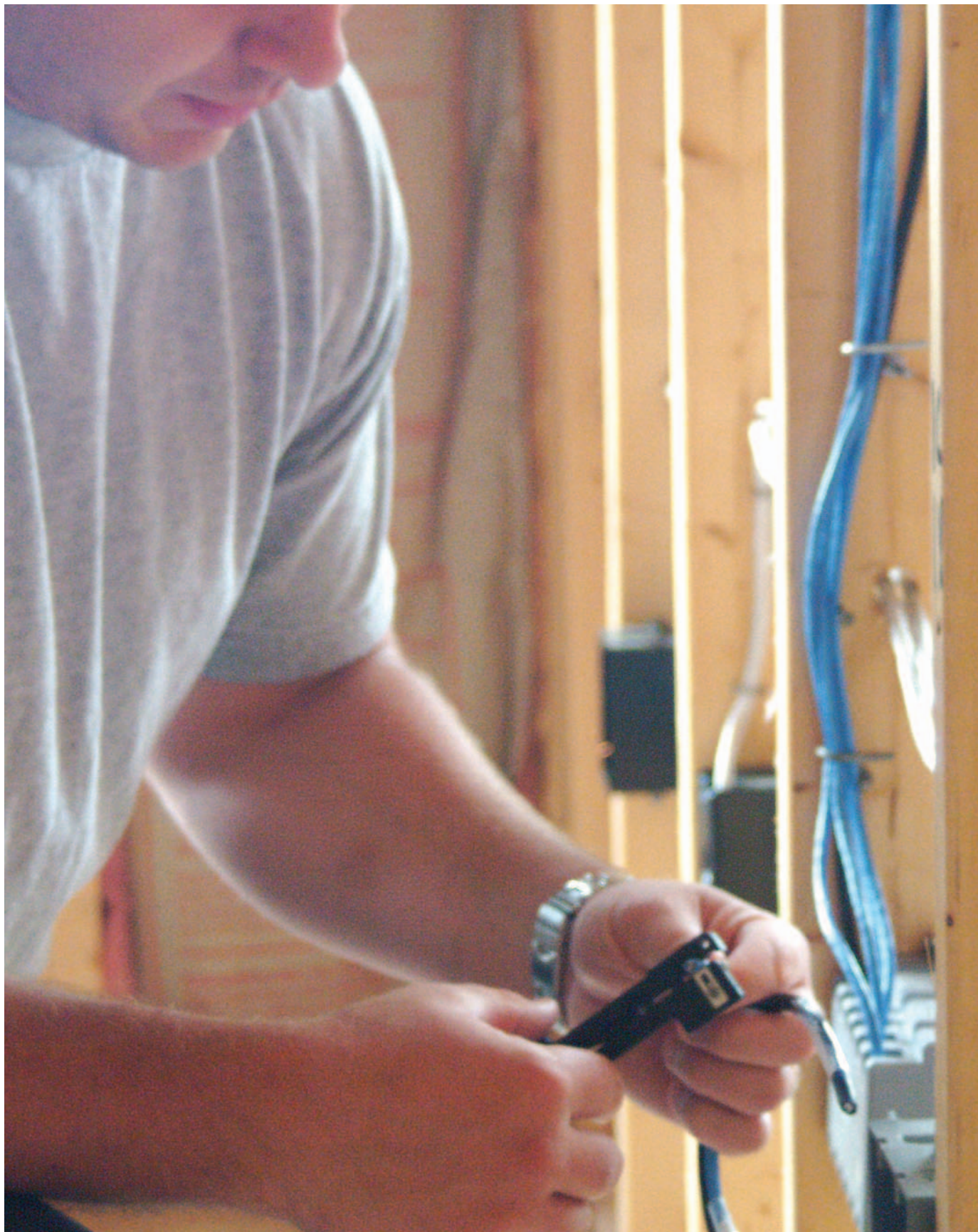
Communications

- Internet
- Telephone
- Home Office
- Intercom

Comfort

- Lighting
- Security
- Control

For more information on these lifestyle concept solutions, and marketing and support tools, see the complete On-Q/Legrand Product Catalog.



THE CONNECTED HOME'S ELECTRONIC FOUNDATION. On-Q products provide the required foundation for the home's electronic infrastructure. From award-winning service centers to high-performance connection outlets, On-Q products guarantee a smooth installation.

Enclosures	0-6 – 0-14	AnyPort Designer Wall Plates	0-24
Custom Rack Drawer	0-15	Hide-A-Port Outlets	0-25
Network Centers	0-16, 0-17	AnyPort Decorator Outlets	0-26
Power Management	0-18, 0-19	AnyPort Inserts	0-27 – 0-29
Keystone Wall Plates & Jacks	0-20, 0-21	AnyPort Outlet Kits	0-30, 0-31
Decorator Wall Plates	0-22	Installation Tools	0-32, 0-33
ValuePort Wall Plates & Outlets	0-23	Mounting Plates	0-34 – 0-37

Pass & Seymour



On-Q/Legrand® Home Systems Enclosures

Part Number	Description	Rail Space (Inches)	Enclosure Color	Door Color	Cover / Door	Door Swing (Left or Right)	UL Listed (Fire and Burglary)	UL Listed (Communication Circuit Equipment)	Lock
1267077-01	12" Value Line Modular Enclosure 13"H x 14.25"W x 4"D	24	Gray	White	Screw on	N/A	N/A	•	N/A
364257-01	24" Value Line Modular Enclosure 25"H x 14.25"W x 4"D	48	Gray	White	Screw on	N/A	N/A	•	N/A
363474-01	14" Premium Line Modular Enclosure 14"H x 14.25"W x 4"D	24	White	White	Hinged	R	•	•	•
363475-01	28" Premium Line Modular Enclosure 28"H x 14.25"W x 4"D	52	White	White	Hinged	R	•	•	•
363476-01	42" Premium Line Modular Enclosure 42"H x 14.25"W x 4"D	80	White	White	Hinged	R	•	•	•
364451-01	28" PLUS™ Series Enclosure 28"H x 14.25"W x 6.5"D	68	White	White	Hinged	R	•	•	•
364451-02	42" PLUS™ Series Enclosure 42"H x 14.25"W x 6.5"D	96	White	White	Hinged	R	•	•	•
364591-01	28" Custom Enclosure 28"H x 14.25"W x 4"D	52	White	Opt.	Hinged Opt. Door	L ¹ or R	•	•	Incl. on Opt. Door
364592-01	42" Custom Enclosure 42"H x 14.25"W x 4"D	80	White	Opt.	Hinged Opt. Door	L ¹ or R	•	•	Incl. on Opt. Door
F7810	20" FoxBox™ 19.25"H x 14.25"W x 3.625"D	N/A	White	White	Screw on	N/A	•	•	N/A
F7811	20" FoxBox™ 19.25"H x 14.25"W x 3.625"D	N/A	White	White	Hinged	R	•	•	Opt. Door
F7814	42" FoxBox™ 42"H x 14.25"W x 3.625"D	N/A	White	White	Screw on	N/A	•	•	N/A
F7815	42" FoxBox™ 42"H x 14.25"W x 3.625"D	N/A	White	White	Hinged	R	•	•	Opt. Door
F7498	32" Titan™ 32"H x 14.25"W x 3.625"D	N/A	White	Gray/Blue on Door	Hinged Opt. Door	L or R	•	•	Incl. on Opt. Door
F7499	42" Titan™ 42"H x 14.25"W x 3.625"D	N/A	White	Gray/Blue on Door	Hinged Opt. Door	L or R	•	•	Incl. on Opt. Door

¹PLUS Series Door facilitates right hand swing only

• = Included With Enclosure

L = Left, R = Right

Opt. = Optional

N/A = Not Available

On-Q/Legrand® Home Systems Enclosures

Pass & Seymour



On-Q/Legrand® Home Systems

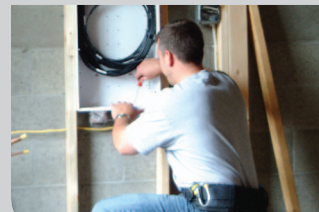
Enclosures

	Allows Surface or Recessed Mounting	Allows Left and Right Module Mounting	Allows Center and Vertical Module Mounting	Allows Wing Style Mounting Bracket	Enclosure Extender	Hinged Expansion Plate Capable (Requires Enclosure Extender)	AC Outlet Knockout	Cable Guard Insert Included	Cable Management Tie Downs	Round Oversized Cable Entry Holes	Oval Shaped Oversized Cable Entry Holes	Protective Cable Grommets Included	2" Conduit Hole in Top of Enclosure
	•	•	N/A	N/A	N/A	N/A	•	•	•	•	N/A	N/A	N/A
	•	•	N/A	N/A	N/A	N/A	•	•	•	•	N/A	N/A	N/A
	•	•	N/A	N/A	N/A	N/A	•	•	•	•	N/A	•	N/A
	•	•	N/A	N/A	Opt.	•	•	•	•	•	N/A	•	N/A
	•	•	N/A	N/A	Opt.	•	•	•	•	•	N/A	•	N/A
	•	•	N/A	N/A	Inc.	•	•	•	•	•	N/A	•	N/A
	•	•	N/A	N/A	Inc.	•	•	•	•	•	N/A	•	N/A
	•	•	•	N/A	Opt.	•	•	•	•	•	•	•	•
	•	•	•	N/A	Opt.	•	•	•	•	•	•	•	•
	•	•	•	N/A	N/A	N/A	•	•	•	•	N/A	N/A	N/A
	•	•	•	N/A	N/A	N/A	•	•	•	•	N/A	N/A	N/A
	•	•	•	N/A	N/A	N/A	•	•	•	•	N/A	N/A	N/A
	•	•	•	N/A	N/A	N/A	•	•	•	•	N/A	N/A	N/A
	•	•	•	N/A	N/A	N/A	•	•	•	•	N/A	N/A	N/A
	•	•	•	•	N/A	N/A	•	•	•	N/A	•	N/A	N/A
	•	•	•	•	N/A	N/A	•	•	•	N/A	•	N/A	N/A

On-Q/Legrand® Home Systems Enclosures

Premium Line Enclosures are offered in three sizes (14", 28" and 42") with removable hinged doors and high-quality locking assembly for a more secure installation.

Rear/top knockouts accommodate cables for flush- or surface-mount applications while heavy-duty bushing rings provide additional cable protection. Finished in an attractive, durable white powder coat inside and out.

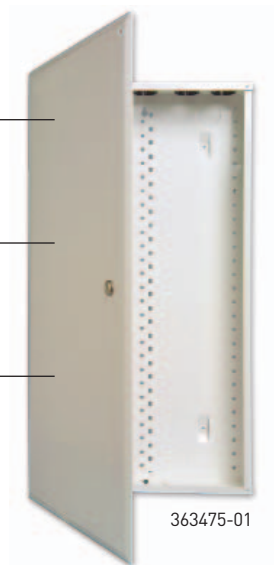


PREMIUM LINE ENCLOSURES

Enhanced Tri-Rail mounting system maximizes rail space for quick installation of half and full width modules.

Double keyhole on hinged door for easier hanging.

UL Listed for fire and burglary rating allows security systems to be installed.



FEATURES

- Features an AC power outlet knockout for duplex receptacle mounting.
- Supports telecom surge protection with an integrated grounding terminal and grounding for the enclosure.
- Flanged cover hides rough edges of drywall openings in recessed installations.
- Patented Tri-Rail mounting system features two sets of rails for speedy full width or half width module installation.
- Supports surface mounted and recessed installations.
- Accepts available Velcro® tie straps to organize and manage cables.
- Drywall Thickness Indicator ensures quick and accurate depth positioning.
- On-Q Cable Guard protects cables during paint and drywall.

PREMIUM LINE ENCLOSURES

PART #	DESCRIPTION	DIMENSIONS (H x W x D)
363474-01	14" Enclosure	14" x 14.25" x 4"
363475-01	28" Enclosure	28" x 14.25" x 4"
363476-01	42" Enclosure	42" x 14.25" x 4"
364351-01	14" Premium Replacement Door - Hinged	N/A
364352-01	28" Premium Replacement Door - Hinged	N/A
364353-01	42" Premium Replacement Door - Hinged	N/A
364450-03	28" Enclosure Extender	N/A
364450-04	42" Enclosure Extender	N/A
364482-01	Enclosure Extender Wire Manager	N/A

PLUS™ SERIES ENCLOSURES

PART #	DESCRIPTION	DIMENSIONS (H x W x D)
364451-01	28" Enclosure	28" x 14.25" x 4"
364451-02	42" Enclosure	42" x 14.25" x 4"
364352-02	28" PLUS Series Replacement Door	N/A
364353-02	42" PLUS Series Replacement Door	N/A

VALUE LINE ENCLOSURES

On-Q Cable Guard protects cables during paint and drywall.

Accommodates video, telephone and network modules as well as home office modules in various combinations.



1267077-01

FEATURES

- Easily accommodates surge option to protect valuable equipment.
- Universal design accommodates a wide array of service provider equipment.
- Brackets easily install using tabs and locking push pins.
- Powder-coated heavy gauge steel.

VALUE LINE ENCLOSURES

PART #	DESCRIPTION	DIMENSIONS (H x W x D)
1267077-01	12" Enclosure	13" x 14.25" x 4"
364257-01	24" Enclosure	24" x 14.25" x 4"
364344-01	12" Value Line Replacement Door	N/A
364354-01	24" Value Line Replacement Door	N/A

RELATED PRODUCTS



POWER STRIP MODULE - FULL WIDTH
364266-01
(Also see Page O-19)



DUPLEX OUTLET POWER KIT
364569-02
(Also see Page O-19)

DUPLEX OUTLET POWER KITS

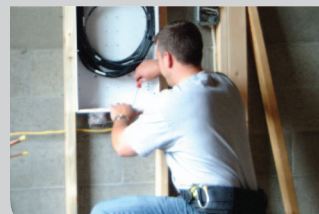
PART #	DESCRIPTION	RATING	SURGE PROTECTION
364569-01	Duplex Outlet Power Kit	120 VAC/15 A	N/A
364569-02	Duplex Outlet Power Kit, Surge Protected	120 VAC/15 A	170 J/400 Clamping Voltage
364767-01	Replacement Surge Module	N/A	170 J/400 Clamping Voltage

ACCESSORIES

PART #	DESCRIPTION	SPECIFICATIONS
363491-01	Velcro® Ties Straps	8" long, 50 per bag
364232-02	Enclosure Plug Kit - Pack of 7	7 (1 3/4") plastic plugs
364232-01	Enclosure Bushing Kit - Pack of 7	7 (1 3/4") plastic rings
364650-01	Enclosure Door Business Card Holder	
364490-01	Replacement Key Kit - Hinged Enclosure	
364478-01	Replacement Lock Assembly - Hinged Door	
364266-01	Power Strip Module - Full Width	
364570-01	Custom Wire Management Module	

On-Q/Legrand® Home Systems Enclosures

On-Q Custom Enclosures allow virtually endless configuration of modules and maximum space savings. The modules can be mounted left, right, vertically or horizontally due to the expanded rail system. Rear/top knockouts accommodate cables for flush- or surface-mount applications while heavy-duty bushing rings provide additional cable protection. Finished in an attractive, durable white powder coat inside and out.

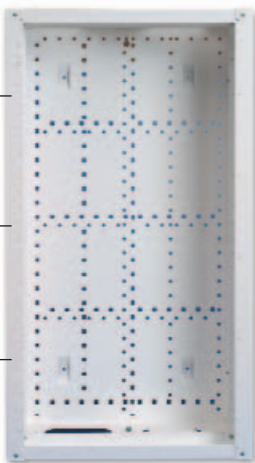


CUSTOM ENCLOSURES

Features innovative mounting system to allow for left, right, center, vertical or horizontal mounting for ease in configuration and mounting flexibility.

Optional enclosure extender covers rough drywall opening around the enclosure and provides extra 2" depth for additional wiring or large devices.

2" conduit hole in top of enclosure for easy cable access.

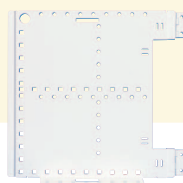


364591-01

FEATURES

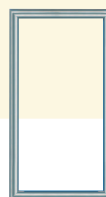
- Features two oval shaped openings on top and one on the bottom of enclosure, covered with a flexible dust cover for easy cable organization.
- Door sold separately for convenient rough-in installation.
- Designed for use with an Enclosure Extender and Custom Door, or with a standard Modular Door or PLUS Series Door.
- UL Listed for fire and burglary rating allows security systems to be installed.

RELATED PRODUCTS



HINGED EXPANSION PLATE

364595-01



CUSTOM DOOR

364593-11

Insert colors



Clear Smoke Rose White

CUSTOM ENCLOSURES

PART #	DESCRIPTION	DIMENSIONS (H x W x D)
364591-01	28" Enclosure	28" x 14.25" x 4"
364592-01	42" Enclosure	42" x 14.25" x 4"
364595-01	12" Hinged Expansion Plate	12" Rail Space

28" CUSTOM DOOR

PART #	DESCRIPTION
364593-11	Brushed Aluminum Frame, Clear Insert
364593-12	Brushed Aluminum Frame, Rose Insert
364593-13	Brushed Aluminum Frame, White Insert
364593-14	Brushed Aluminum Frame, Smoke Insert
364593-21	White Frame, Clear Insert
364593-22	White Frame, Rose Insert
364593-23	White Frame, White Insert
364593-24	White Frame, Smoke Insert
364352-02	28" PLUS Series Replacement Door

42" CUSTOM DOOR

PART #	DESCRIPTION
364594-11	Brushed Aluminum Frame, Clear Insert
364594-12	Brushed Aluminum Frame, Rose Insert
364594-13	Brushed Aluminum Frame, White Insert
364594-14	Brushed Aluminum Frame, Smoke Insert
364594-21	White Frame, Clear Insert
364594-22	White Frame, Rose Insert
364594-23	White Frame, White Insert
364594-24	White Frame, Smoke Insert
364353-02	42" PLUS Series Replacement Door

On-Q/Legrand® Home Systems Integration Brackets

Pass & Seymour



TWO-BAY GREYFOX TO ON-Q MOUNTING BRACKET

Want to connect a Greyfox Intercom System to an On-Q enclosure? No problem. Innovative integration brackets allow you to mix and match products across both product lines for seamless connectivity. This means that you can stick with what you're familiar with – your favorite products will be right there just the way you like them. Imagine the possibilities.

Greyfox to On-Q Mounting Plates allow easy integration of Greyfox modules into On-Q enclosures.

Brackets easily install using tabs and locking push pins.

Integration Brackets mount easily into either On-Q or Greyfox enclosures to mix and match products.



364819-01



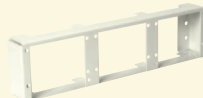
FEATURES

- Available in three versions: two-bay, three-bay or six-bay for ultimate flexibility.
- Provides space away from the back plane of enclosure for cable routing.
- Three-Bay Bracket allows mounting of three single-bay modules.
- Six-Bay Bracket allows the mounting of six single-bay or three double-bay modules.
- Powder-coated heavy gauge steel.

RELATED PRODUCTS



ON-Q MODULE TO
GREYFOX MOUNTING
PLATE
F9002



THREE-BAY MODULE
MOUNTING BRACKET
F7510



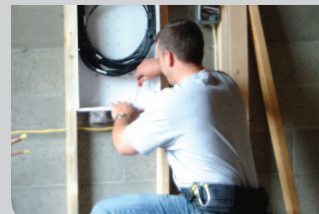
SIX-BAY MODULE
MOUNTING BRACKET
F9001

INTEGRATION BRACKETS

PART #	DESCRIPTION	NO. OF BAYS	MODULE STYLE	ENCLOSURE MOUNT
364819-01	Two-Bay Greyfox to On-Q Mounting Bracket	2	Greyfox	On-Q
F9002	On-Q Module to Greyfox Mounting Plate	N/A	On-Q	Greyfox
F7510	Three-Bay Module Mounting Bracket	3	Greyfox	Greyfox/On-Q
F9001	Six-Bay Module Mounting Bracket	6	Greyfox	Greyfox/On-Q
F7520	Two-Bay Module Mounting Bracket	2	Greyfox	Greyfox

On-Q/Legrand® Home Systems Enclosures

Our popular FoxBox™ and FoxBox Plus™ are perfect for mid- to large-size production homes. Both are available with flat or hinged covers, and include two mounting brackets. Where security is an issue, the hinged cover latch can be replaced with an optional locking kit.



FOXBOX™ ENCLOSURES

Rugged, 18-gauge steel construction protects modules and connections and provides solid support for punchdowns.

Two mounting brackets (included) provide generous capacity for even complex network installations in large homes.

Module mounting brackets can be installed perpendicular to the enclosure for video or parallel for voice, data and audio applications.



F7810

FEATURES

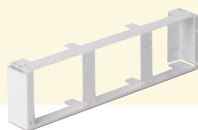
- Convenient mounting tabs automatically provide correct flush-mount position for standard 1/2" finish walls.
- Modular plug termination wiring diagram for instant reference; helps ensure accurate wiring.
- Contains knockouts for two single-gang metal boxes allowing for two standard or TVSS receptacles.

RELATED PRODUCTS



FOXBOX™ HOME ENCLOSURE

F7810



TWO-BAY MODULE MOUNTING BRACKET

F7520



HINGED COVER FOR FOXBOX™

F8020 (SHOWN WITH F7810)

FOXBOX™ ENCLOSURES

PART #	DESCRIPTION	DIMENSIONS (H x W x D)
F7810	20" FoxBox™ Enclosure (includes flat cover and two mounting brackets)	19.25" x 14.25" x 3.625"
F7811	20" FoxBox™ Enclosure (includes hinged cover, latch and two mounting brackets)	19.25" x 14.25" x 3.625"
F7814	42" FoxBox Plus™ Enclosure (includes flat cover and two mounting brackets)	42.00" x 14.25" x 3.625"
F7815	42" FoxBox Plus™ Enclosure (includes hinged cover, latch and two mounting brackets)	42.00" x 14.25" x 3.625"

FOXBOX™ ACCESSORIES & REPLACEMENT PARTS

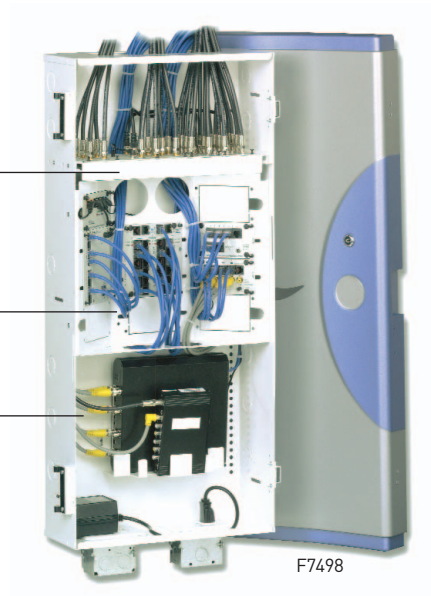
PART #	DESCRIPTION	PART #	DESCRIPTION
F7520	Two-Bay Module Mounting Bracket	F7717	Blank Plate for Unused Module Spaces
F7510	Three-Bay Module Mounting Bracket	F2242	2.5" Grommet Ring
F2250	Pins & Rivets for Mounting F7520 and F7510, Bag of 50	F2249	2.5" Knockout Plug
F8020	Hinged cover for FoxBox™ (F7810)	F7517	Third-Party Accessory Bracket
F8010	Hinged Locking Kit	F7509	Circuit Board Mounting Bracket

TITAN™ PREMIUM ENCLOSURES

Unique video mounting brackets eliminate bend radius problems and easily accommodate up to 40 video connections.

Angled mounts for snap-in modules provide optimum work room, easy visibility and fast, simple connections.

Knockouts on the sides to run cable between multiple enclosures.



FEATURES

- Heavy, 18-gauge steel construction provides long-term durability.
- Sturdy, snap-in plastic hinges require no tools for installation.
- Cover mounts from left or right for maximum flexibility.
- Stylish, plastic cover with a silver, metallic finish completes the installation.
- Plenty of room inside the enclosure, almost 5" deep, allows for easy wire management and installation.

RELATED PRODUCTS



32" TITAN
ENCLOSURE
F7498



COVER FOR 32"
TITAN
F8800



TRIM KIT FOR TITAN
ENCLOSURE
F7753

TITAN™ ENCLOSURES, TRIM KITS & COVERS

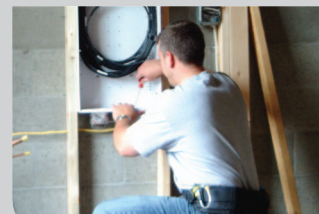
PART #	DESCRIPTION	DIMENSIONS (H x W x D)
F7498	32" Titan Enclosure, semi-flush	32" x 14.4" x 5.5"
F7499	42" Titan Enclosure, semi-flush	42" x 14.4" x 5.5"
F7753	Trim Kit for Titan Enclosure (includes wing bracket and five-bay video bracket)	N/A
F8800	Cover for 32" Titan	34" x 16.5" x 3"
F8900	Cover for 42" Titan	44.5" x 16.5" x 3"

TITAN™ ACCESSORIES & REPLACEMENT PARTS

PART #	DESCRIPTION
F7518	Two-Bay Video Mounting Bracket for Titan™ Series (Note: Only fits in 42" Titan Enclosure - Cat. No. F7499)
F7517	Third-Party Accessory Bracket
F7509	Circuit Board Mounting Bracket

On-Q/Legrand® Home Systems Concrete Enclosures

Our affordable Home Network Centers for concrete construction are made out of a rugged, more durable grade of steel to withstand concrete pour. Available in three sizes (20", 26" and 36"), these enclosures are designed to meet the home networking needs of all sizes of concrete homes, which are common to the Southern U.S. States, Puerto Rico and South America.

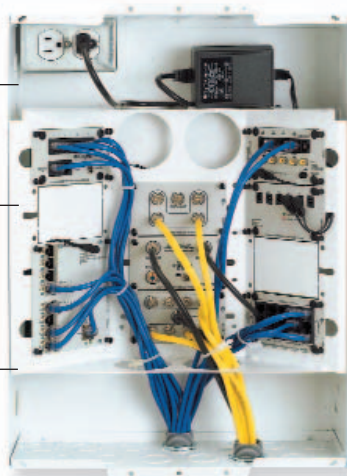


20" ROUGH-IN ENCLOSURE

Rugged, more durable grade of steel to withstand concrete pour.

Angled mounts for snap-in modules provide optimum work room, easy visibility and fast, simple connection points.

Multiple 3/4" and 1" concentric conduit knock outs for entry from the top, bottom and sides.



F7505

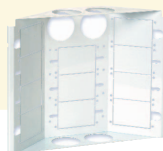
FEATURES

- Front mounting flange for better alignment and prevention of rotation during concrete pour.
- Slots for cover mounting ensure level installation after concrete pour.

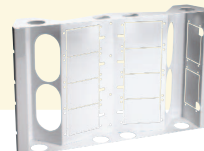
RELATED PRODUCTS

HINGED METAL COVER
WITH LATCH

F8030

WING MOUNTING
BRACKET

F7752

WING MOUNTING
BRACKET

F7754

ENCLOSURES FOR CONCRETE CONSTRUCTION

PART #	DESCRIPTION	DIMENSIONS (H x W x D)
F7505	20" Rough-in Enclosure (16-gauge steel)	19.5" x 14.2" x 4.6"
F7507	26" Rough-in Enclosure (16-gauge steel)	26" x 19.1" x 3.6"
F7506	36" Rough-in Enclosure (16-gauge steel)	36" x 19.1" x 3.6"

ENCLOSURE ACCESSORIES FOR CONCRETE CONSTRUCTION

PART #	DESCRIPTION	DIMENSIONS (H x W x D)
F7752	Wing Mounting Bracket for F7505	11.4" x 14.2" x 3.3"
F8031	Flat Metal Cover for F7505	22" x 17"
F8030	Hinged Metal Cover with Latch for F7505	22" x 17" Mod
F7756	Half Wing Mounting Bracket for F7507	6.8" x 18.9" x 3.2"
F8033	Hinged Metal Cover with Latch for F7507	29" x 22"
F7754	Wing Mounting Bracket for F7506 and F7507	11.3" x 18.9" x 3.2"
F8032	Hinged Metal Cover with Latch for F7506	39" x 22"
F8010	Hinged Locking Kit	N/A
F2242	2.5" Grommet Ring	N/A

On-Q/Legrand® Home Systems 19" Custom Rack Drawer

Pass & Seymour



Innovative patented 2U design features vertical and horizontal mounting patterns for flexibility when installing modules. The drawer mounts vertically into any standard media rack or high-end rack mount installation.

19" ON-Q CUSTOM RACK DRAWER

19" Drawer Wire Manager can be mounted on left or right side for flexible configuration.

Optional 19" Drawer Façade supports deep module installation. (Not shown, 364583-01)



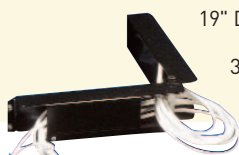
364566-01

FEATURES

- Enables On-Q products to be incorporated into high-end rack mount installations.
- Patented design features new vertical and horizontal mounting pattern for flexibility in installing modules.
- Mounts vertically in any standard 19" media rack.
- Standard 2U rack design.



RELATED PRODUCTS



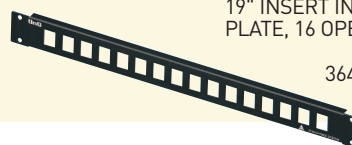
19" DRAWER WIRE

364573-01



19" DRAWER
FAÇADE, 1U

364583-01



19" INSERT INTERFACE
PLATE, 16 OPENING

364576-01

CUSTOM RACK DRAWER AND PARTS

PART #	DESCRIPTION
364566-01	Rack Drawer With Wire Manager
364566-02	Rack Drawer Without Wire Manager
364573-01	19" Drawer Wire Manager
364583-01	19" Drawer Façade, 1U
364575-01	19" Video Interface Plate, 16 Opening
364576-01	19" Insert Interface Plate, 16 Opening
364570-01	On-Q Custom Wire Management Module

On-Q/Legrand® Home Systems Network Centers

Designed with the smaller installation in mind, the Basic Network Center and Trio™ offer a compact enclosure with room for the basics: phone and video. The Basic Home Network Center – also available in an apartment version – comes pre-configured with phone and video connections. The Trio™ Home Network Center offers the ability to gang brackets together for easy upgrades. No matter how large or small the install, On-Q has an enclosure to meet your customer’s needs.



BASIC NETWORK CENTER

Distributes incoming video signal to up to four television outlets.

Surface-mount design is ideal for retrofit applications.

Distributes up to six telecom outlets each with up to four lines.

Available surface-mount door conceals and protects cables.



364397-01

FEATURES

- Features support for telephone, fax, modem and cable TV service.
- Grounding lug supports enclosure grounding for surge applications.
- Durable white powder coat finish inside and out.
- Economical solution for small fixed installations.
- UL Listed.

ADVANCED NETWORK CENTER

Distributes incoming video signals for up to six television outlets and supports up to 11 telephone outlets with up to four lines. Surface-mount design is ideal for retrofit applications. Features two expansion bays for additional On-Q system modules. Flush-mount version features three expansion bays.



364398-02

UNIVERSAL NETWORK CENTER

The 7"W x 19"H Universal Network Center mounting bracket provides flexible and economical mounting of the On-Q Lighting Controller and associated expansion modules.



364399-01

NETWORK CENTERS

PART #	DESCRIPTION	DIMENSIONS (H x W)	COVER	RAIL SPACE
364397-01	Basic Network Center	7"W x 12"H	364393-01	0"
364393-01	Cover, Basic Network	7"W x 10"H	N/A	N/A
364398-02	Advanced Network Center, Surface Mount	7"W x 19"H	364394-01	7"
364499-01	Advanced Network Center, Flush Mount	7"W x 19"H	Included	9"
364394-01	Surface Mount Cover, White	7"W x 19"H	N/A	N/A
364399-01	Universal Network Center	7"W x 19"H	364394-01	16"

THE TRIO™ EXPANDABLE HOME NETWORK CENTER

Low cost, surface mounting bracket – perfect for small or retrofit installations.

The central connection panel for up to three Greyfox style modules.

Rugged, enamel-finished steel housing with impact resistant cover.



F7809

FEATURES

- Provides central distribution capabilities for smaller home networks.
- Conveniently mounts on plywood backboard.
- Single bracket provides support for video and telephone with one additional space for upgrade.
- Brackets can be ganged for future expansion.
- Surface mounts for easy retrofit application.

THE TRIO™

PART #	DESCRIPTION	DIMENSIONS (H x W x D)
F7804	Trio™ Modular Bracket and Cover	11.6" x 4.8" x 4"
F7809	Trio™ Home Network Kit Includes: One Trio™ Bracket, 1x4 Video Module, 4x12 Configurable Phone Module	N/A

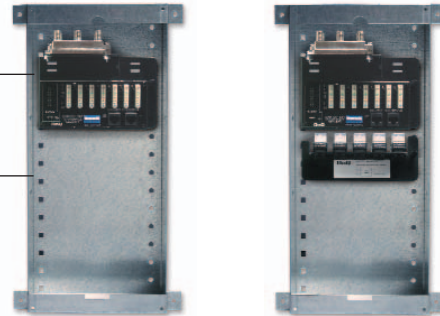
APARTMENT NETWORK CENTER

FEATURES

- Provides connections for telecom and cable TV service.
- Flush-mount design features a tamper resistant locking door.
- Telecom surge protection enabled and security system ready.
- Expandable for additional telecom, video, data or audio modules.
- Convenient for small applications.
- UL Listed.

Supports up to six telecom and four video connections.

Four video connections help to ensure proper video signal strength.



364470-01-M1

364470-02-M1

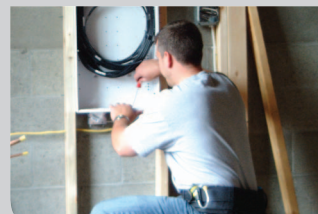
APARTMENT NETWORK CENTER

PART #	DESCRIPTION	RAIL SPACE	TELEPHONE	VIDEO
364470-01-M1	6x4 Basic Apartment Network Center	8"	6	4
364470-03-M1	6x6 Basic Apartment Network Center	8"	6	6
364470-05-M1	6x8 Basic Apartment Network Center	8"	6	8
364470-02-M1	6x4 Advanced Apartment Network Center	5"	6	4
364470-04-M1	6x6 Advanced Apartment Network Center	5"	6	6
364470-06-M1	6x8 Advanced Apartment Network Center	5"	6	8
364539-01-M1	Replacement Door, Apartment Network Center (Locking)			
364540-01	Replacement Door, Advanced Network Center, Flush Mount (Non-Locking)			

On-Q/Legrand® Home Systems Power Management

Easy Power Guidelines

Use the chart below to quickly determine your power requirements. Take all of the powered modules in your installation and add up the required amps. Once you have determined your total power requirements, choose the appropriate power supply and power distribution module. If you would like to power all of your modules individually, power supply guidelines for each module are provided below.



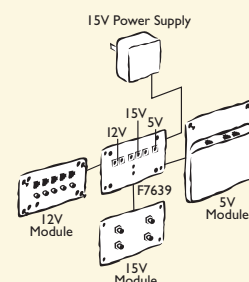
MULTI-VOLTAGE POWER DISTRIBUTION MODULE

Reduces power supply clutter inside the enclosure and supports up to two 1.45 Amp transformers.

Energizes up to seven powered modules with one compact, economical transformer.



Distributing Power to the Home Network



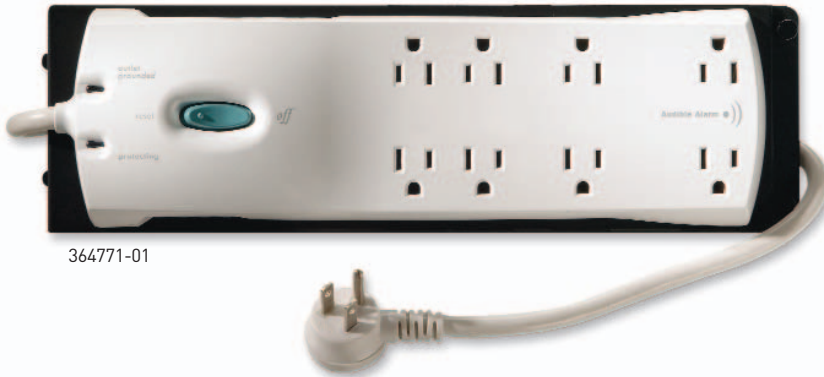
POWER MANAGEMENT

PART #	DESCRIPTION
F7639	Multi-Voltage Power Distribution Module
F7715	15 Volt, 1.45 A Desktop Mounter
F7760	15 Volt, 400 mA Wall-Mount Power Supply
F7725	12 Volt, 2.5 A Desk-Mount Power Supply
F7726	12 Volt, 1.5 A Wall-Mount Power Supply
F7723	24 Volt, 2.5 A Power Supply

MODULE POWER REQUIREMENTS

PART #	DESCRIPTION	VOLTAGE	AMP	POWER SUPPLY TO USE
F1001	1 Channel Modulator	15 V	200 mA	Included with product
F1003	3 Channel Modulator	15 V	300 mA	Included with product
F1014	Quad Tiler	12 V	250 mA	F7726
F2295	IP Video Server	12 V	700 mA	Included with product
F7396	lyriQ™ Audio Module	24 V	2.5 A	F7723
F7559	8-Port Router	15 V	375 mA	F7760
F7562	4-Port Router	5 V	800 mA	Included with product
F7565	5-Port 10/100 Base-T Switch	15 V	300 mA	F7760
F7593-XX	Intercom Module and Main Console	12 V	2.5 A	F7725-Systems using any combination of eight or more room and door units
F7593-XX	Intercom Module and Main Console	12 V	1.5 A	F7726-Systems using any combination of up to seven room and door units
F7599	LCD Display Module	15 V	900 mA	F7715
F7632	2x2 Enhanced Video Amp (bi-directional)	12 V-15 V	250 mA	F7760
F7638	Category 5 Camera Module	12 V	800 mA	F7726
F7639	Multi-Voltage Power Distribution	15 V	1.45 A - 2.9 A	Requires up to two F7715 Module 1.45 amp transformers
F7640	1x1 Video Amplifier (bi-directional)	12 V-15 V	150 mA	F7760
F7630	3x4 Enhanced Video Amp (bi-directional)	12 V	750 mA	F7726

SURGE PROTECTED POWER MODULE



364771-01

FEATURES

- Features high-quality surge suppression and noise filtering to eliminate damaging electrical disturbances.
- Provides eight 120 V outlets, with a 15 Amp maximum load current and a 76,500 Amp maximum surge current.
- Conveniently mounts inside any On-Q enclosure.

RELATED PRODUCTS



POWER STRIP MODULE -
FULL WIDTH

364266-01



DUPLEX OUTLET
POWER KIT

364569-02

POWER STRIPS AND OUTLET KITS

PART #	DESCRIPTION	RATING	SURGE PROTECTION
364771-01	Surge Protected Power Module	120 VAC/15 A	1380 J/330 Clamping Voltage
364266-01	Power Strip Module - Full Width	120 VAC/15 A	N/A
364569-01	Duplex Outlet Power Kit	120 VAC/15 A	N/A
364569-02	Duplex Outlet Power Kit, Surge Protected	120 VAC/15 A	170 J/400 Clamping Voltage
364767-01	Replacement Surge Module	N/A	170 J/400 Clamping Voltage
F7526	AC Power Kit (Duplex Power Outlet)	120 VAC/15 A	N/A

HOME MANAGEMENT SYSTEM POWER

PART #	DESCRIPTION
363521-01	HMS Backup Battery
363522-02	HMS Power Transformer - Model 800, 16.5 VAC, 40 VA
363522-01	HMS Power Transformer - Model 950/1100, 24 VAC, 40 VA
364264-01	Battery Holder, Half Width
364265-01	Battery Holder, Full Width
364538-01	HMS Keypad/Thermostat Connector Assembly

OTHER REPLACEMENT POWER SUPPLIES

PART #	DESCRIPTION
364272-05	Power Supply - 5-Port 10/100 Switch 5 VDC, 1.5 A transformer for the 5-Port Network Hub (364528-01)
364272-06	Power Supply - 4-Port 10/100 Router / Switch 5 VDC, 2.4 A transformer for the 4-Port 10/100 Router Switch (364537-02)
364775-01	Replacement Power Supply - 4-Port 10/100 Router/Switch (364772-01)
364723-01	Replacement Power Supply - Wireless Access Point

Pass & Seymour



On-Q/Legrand® Home Systems Keystone Wall Plates & Integrated Frames

Available in five colors that will complement any home's décor, stylish new Keystone Wall Plates are designed slightly larger than standard wall plates to provide better coverage over gang boxes – reducing time-consuming drywall work. Multimedia Frames are labeled with phone, data and video for easier Cat 5 and RG-6 customized configurations.



2-PORT KEYSTONE WALL PLATE

Smooth, polished look fits any décor and matches wiring device wall plates. Ideal for any installation where appearance is especially important. And a perfect match for On-Q jacks.

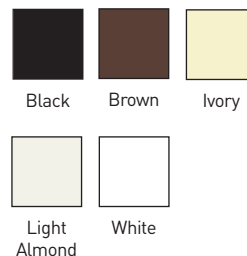
Better coverage, with an extra 3/16" more width and height than standard plates to reduce time-consuming drywall rework.

Flexible modular design accepts any combination of On-Q Keystone Inserts for fast, easy configuration.



F3402

Available Colors



RELATED PRODUCTS



1-PORT KEYSTONE
WALL PLATE

F3401



MULTIMEDIA
DECORATOR FRAME

F3211



MULTIMEDIA
DECORATOR FRAME

F3422

TRADEMASTER™ KEYSTONE WALL PLATES

P&S CAT. #	ON-Q PART #	DESCRIPTION	COLOR
KTPD1-BK	F3401-BK	1-Port Keystone Wall Plate	Black
KTPD1-BR	F3401-BR		Brown
KTPD1-I	F3401-IV		Ivory
KTPD1-LA	F3401-LA		Light Almond
KTPD1-W	F3401-WH		White
KTPD2-BK	F3402-BK	2-Port Keystone Wall Plate	Black
KTPD2-BR	F3402-BR		Brown
KTPD2-I	F3402-IV		Ivory
KTPD2-LA	F3402-LA		Light Almond
KTPD2-W	F3402-WH		White
KTPD3-BK	F3403-BK	3-Port Keystone Wall Plate	Black
KTPD3-BR	F3403-BR		Brown
KTPD3-I	F3403-IV		Ivory
KTPD3-LA	F3403-LA		Light Almond
KTPD3-W	F3403-WH		White

WALL PLATES & MULTIMEDIA FRAMES

P&S CAT. #	ON-Q PART #	DESCRIPTION	COLOR
KTPD4-BK	F3404-BK	4-Port Keystone Wall Plate	Black
KTPD4-BR	F3404-BR		Brown
KTPD4-I	F3404-IV		Ivory
KTPD4-LA	F3404-LA		Light Almond
KTPD4-W	F3404-WH		White
KTPD6-BK	F3406-BK	6-Port Keystone Wall Plate	Black
KTPD6-BR	F3406-BR		Brown
KTPD6-I	F3406-IV		Ivory
KTPD6-LA	F3406-LA		Light Almond
KTPD6-W	F3406-WH		White
—	F3211-WH	Multimedia Decorator Frame One Cat 5e RJ45 on One F-Connector	White
—	F3220-WH	Multimedia Decorator Frame Two Cat 5e RJ45 Connectors	White
—	F3422-WH	Multimedia Decorator Frame Two Cat 5e RJ45 and Two F-Connectors	White

On-Q/Legrand® Home Systems Keystone UTP & Multimedia Jacks

Pass & Seymour



On-Q/Legrand® Home Systems

Keystone UTP & Multimedia Jacks

KEYSTONE UTP & MULTIMEDIA JACKS



P&S CAT. #	ON-Q PART #	DESCRIPTION	COLOR
KS58AB-BK	F3450-BK	Cat 5e RJ45	Black
KS52AB-BR	F3450-BR	Keystone Connector	Brown
KS58AB-I	F3450-IV	(T568A/B wired)	Ivory
KS58AB-LA	F3450-LA		Light Almond
KS58AB-W	F3450-WH		White
KS58AB-BE	F3450-BE		Blue
KS58AB-GY	F3450-GY		Grey
KS58-I	—	Cat 5e RJ45	Ivory
KS58-LA	—	Keystone Connector	Light Almond
KS58-W	—	(T568A only wired)	White
KS2BP-BK	F3457-BK	Keystone Audio	Black
KS2BP-BR	F3457-BR	Binding Posts	Brown
KS2BP-I	F3457-IV	(Includes 1 Red & 1 Black)	Ivory
KS2BP-LA	F3457-LA		Light Almond
KS2BP-W	F3457-WH		White
KSRCF-BK	F3459-BK	Keystone Red RCA to	Black
KSRCF-BR	F3459-BR	F-Connector (red)	Brown
KSRCF-I	F3459-IV		Ivory
KSRCF-LA	F3459-LA		Light Almond
KSRCF-W	F3459-WH		White
KSFF-BK	F3481-BK	Standard Keystone	Black
KSFF-BR	F3481-BR	F-Connector	Brown
KSFF-I	F3481-IV		Ivory
KSFF-LA	F3481-LA		Light Almond
KSFF-W	F3481-WH		White
KSFFST-BK	F3482-BK	Self-Terminating Keystone	Black
KSFFST-BR	F3482-BR	F-Connector	Brown
KSFFST-I	F3482-IV		Ivory
KSFFST-LA	F3482-LA		Light Almond
KSFFST-W	F3482-WH		White
KSBL10-BK	F3455-BK	Blank Inserts	Black
KSBL10-BR	F3455-BR	(Blank of 10)	Brown
KSBL10-I	F3455-IV		Ivory
KSBL10-LA	F3455-LA		Light Almond
KSBL10-W	F3455-WH		White
—	F3412-IV		Ivory
—	F3412-LA	2-Port Decorator Frame	Light Almond
—	F3412-WH		White
—	F3413-IV		Ivory
—	F3413-LA	3-Port Decorator Frame	Light Almond
—	F3413-WH		White
—	F3414-IV		Ivory
—	F3414-LA	4-Port Decorator Frame	Light Almond
—	F3414-WH		White

Pass & Seymour



On-Q/Legrand® Home Systems Decorator Wall Plates & Frames

Looking to specify network wiring devices that are 100 percent aesthetically compatible with your other wiring devices? Now you can with the TradeMaster® Line. The same colors. The same finishes. The same sophisticated contours. The same dimensions. And because TradeMaster power wiring wall plates are available in a full range of colors and types, you don't have to compromise anywhere appearance is important.

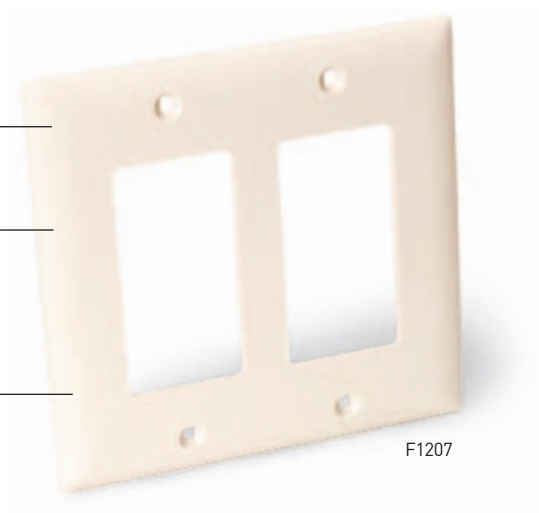


2-GANG DECORATOR WALL PLATE

Virtually unbreakable construction features patent-pending reinforcing ribs for enhanced rigidity.

Smooth, polished look fits any décor and matches wiring device wall plates. Ideal for any installation where appearance is especially important. And a perfect match for On-Q Decorator Frames and Keystone Jacks.

Better coverage, with an extra 3/16" more width and height than standard plates to reduce time-consuming drywall rework.



F1207

RELATED PRODUCTS



1-GANG DECORATOR
WALL PLATE
F1205



2-GANG WALL PLATE
1 DUPLEX/1 DECORATOR
F1206



2-PORT DECORATOR
FRAME
F3412

DECORATOR WALL PLATES

PART #	DESCRIPTION	COLOR
F1194-IV F1194-LA F1194-WH	1-Gang Blank Plate	Ivory Light Almond White
F1205-IV F1205-LA F1205-WH	1-Gang Decorator Wall Plate	Ivory Light Almond White
F1207-IV F1207-LA F1207-WH	2-Gang Decorator Wall Plate	Ivory Light Almond White
F1208-IV F1208-LA F1208-WH	3-Gang Decorator Wall Plate	Ivory Light Almond White

DECORATOR FRAMES & DUPLEX PLATES

PART #	DESCRIPTION	COLOR
F3412-IV F3412-LA F3412-WH	2-Port Decorator Frame	Ivory Light Almond White
F3413-IV F3413-LA F3413-WH	3-Port Decorator Frame	Ivory Light Almond White
F3414-IV F3414-LA F3414-WH	4-Port Decorator Frame	Ivory Light Almond White
F1206-IV F1206-LA F1206-WH	2-Gang Wall Plate 1 Duplex/1 Decorator	Ivory Light Almond White
F1201-IV F1201-LA F1201-WH	3-Gang Wall Plate 1 Duplex/2 Decorator	Ivory Light Almond White

On-Q/Legrand® Home Systems Valueport™ Wall Plates

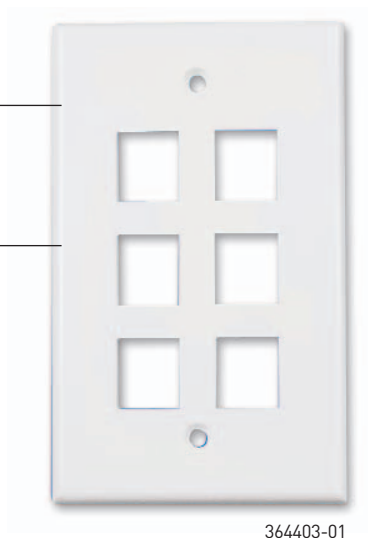
Pass & Seymour



6-PORT VALUEPORT™ WALL PLATE

Available in one-, two-, four- or six-port configurations.

Supports all combinations of AnyPort Application Inserts.



FEATURES

- Available in white, light almond and ivory.
- Outlets mount in On-Q Installation Brackets or low-voltage mud rings.
- 4-Port also available with angled insert opening.
- Economy wall plate for the cost conscious homeowner.
- UL Listed.



White



Light
Almond



Ivory

RELATED PRODUCTS



4-PORT VALUEPORT™
WALL PLATE, ANGLED

364558-01 WHITE



VALUEPORT™ WALL
PHONE PLATE

364404-01 WHITE

VALUEPORT™ WALL PLATES

PART #	DESCRIPTION
364446-01 (White)	1-Port ValuePort Wall Plate
364446-02 (Lt. Almond)	1-Port ValuePort Wall Plate
364446-03 (Ivory)	1-Port ValuePort Wall Plate
364401-01 (White)	2-Port ValuePort Wall Plate
364401-02 (Lt. Almond)	2-Port ValuePort Wall Plate
364401-03 (Ivory)	2-Port ValuePort Wall Plate
364402-01 (White)	4-Port ValuePort Wall Plate
364402-02 (Lt. Almond)	4-Port ValuePort Wall Plate
364402-03 (Ivory)	4-Port ValuePort Wall Plate

PART #	DESCRIPTION
364558-01 (White)	4-Port ValuePort Wall Plate, Angled
364558-02 (Lt. Almond)	4-Port ValuePort Wall Plate, Angled
364558-03 (Ivory)	4-Port ValuePort Wall Plate, Angled
364403-01 (White)	6-Port ValuePort Wall Plate
364403-02 (Lt. Almond)	6-Port ValuePort Wall Plate
364403-03 (Ivory)	6-Port ValuePort Wall Plate
364404-01 (White)	ValuePort Wall Phone Plate
364404-03 (Ivory)	ValuePort Wall Phone Plate

Pass & Seymour



On-Q/Legrand® Home Systems Anyport™ Designer Wall Plates

Interior designers developed the On-Q AnyPort™ Wall Plates specifically for residential applications. The wall plates' smooth, rounded edges and two-piece design conceals screw heads to provide an elegant appearance to home network installations. Available in three colors, the versatile wall plates come in blank, one-, two-, three-, four-, six- and 12-port configurations to accommodate a wide variety of networking needs.



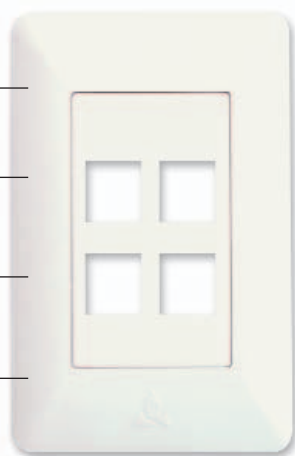
4-PORT ANYPORT™ DESIGNER WALL PLATE

Refined two-piece design hide screws.

All openings support AnyPort Application Icons.

Smooth finish with contoured edges and rounded corners.

Oversized design conceals drywall rough edges.



364303-01

FEATURES

- Available in white, light almond and ivory.
- Blank, one-, two-, three-, four-, six- and 12-port configurations available.
- Snap-in identification icons available.
- Outlets mount in On-Q Installation Brackets or low-voltage mud rings.
- Designed specifically for residential installations by an interior designer.
- UL Listed.
- Supports AnyPort Application Inserts.
- Optional icon kit available to easily identify outlet insert function.
- Oversized design.



White



Light
Almond



Ivory

RELATED PRODUCTS



6-PORT ANYPORT™
DESIGNER WALL PLATE
(Inserts Sold Separately)
364304-01 WHITE



1-PORT ANYPORT™
DESIGNER WALL PLATE
364300-01 WHITE

ANYPORT™ DESIGNER WALL PLATES

PART #	DESCRIPTION
364299-01 (White)	Blank AnyPort Designer Wall Plate
364299-02 (Lt. Almond)	Blank AnyPort Designer Wall Plate
364299-03 (Ivory)	Blank AnyPort Designer Wall Plate
364300-01 (White)	1-Port AnyPort Designer Wall Plate
364300-02 (Lt. Almond)	1-Port AnyPort Designer Wall Plate
364300-03 (Ivory)	1-Port AnyPort Designer Wall Plate
364301-01 (White)	2-Port AnyPort Designer Wall Plate
364301-02 (Lt. Almond)	2-Port AnyPort Designer Wall Plate
364301-03 (Ivory)	2-Port AnyPort Designer Wall Plate

PART #	DESCRIPTION
364302-01 (White)	3-Port AnyPort Designer Wall Plate
364302-02 (Lt. Almond)	3-Port AnyPort Designer Wall Plate
364302-03 (Ivory)	3-Port AnyPort Designer Wall Plate
364303-01 (White)	4-Port AnyPort Designer Wall Plate
364303-02 (Lt. Almond)	4-Port AnyPort Designer Wall Plate
364303-03 (Ivory)	4-Port AnyPort Designer Wall Plate
364304-01 (White)	6-Port AnyPort Designer Wall Plate
364304-02 (Lt. Almond)	6-Port AnyPort Designer Wall Plate
364304-03 (Ivory)	6-Port AnyPort Designer Wall Plate
364305-01 (White)	12-Port AnyPort Designer Wall Plate
364305-02 (Lt. Almond)	12-Port AnyPort Designer Wall Plate
364305-03 (Ivory)	12-Port AnyPort Designer Wall Plate

On-Q/Legrand® Home Systems Hide-A-Port™ Outlets

Pass & Seymour



4-PORT HIDE-A-PORT™ OUTLET

8-Port fits in double-gang configuration;
4-Port fits in single configuration.

Extra-long combo head screws for
installation ease.

Rounded corners for a more
aesthetically pleasing appearance.



364311-01

FEATURES

- Protective cover allows home office furniture to be placed close to the wall.
- Available in white, light almond, ivory, 4-Port also available in brown.
- Four- and eight-port configurations available.
- Snap-in identification icons available.
- Ideal for home office applications.
- UL Listed.



White



Light
Almond



Ivory



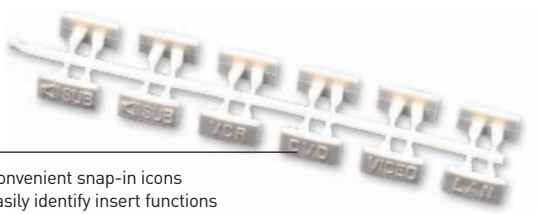
Brown

HIDE-A-PORT™ WALL PLATES

PART #	DESCRIPTION
364311-01 (White)	4-Port Hide-A-Port Outlet
364311-02 (Lt. Almond)	4-Port Hide-A-Port Outlet
364311-03 (Ivory)	4-Port Hide-A-Port Outlet
364311-04 (Brown)	4-Port Hide-A-Port Outlet

PART #	DESCRIPTION
364312-01 (White)	8-Port Hide-A-Port Outlet
364312-02 (Lt. Almond)	8-Port Hide-A-Port Outlet
364312-03 (Ivory)	8-Port Hide-A-Port Outlet

ANYPORT™ ICON KIT



Convenient snap-in icons
easily identify insert functions

364293-01

PART #	DESCRIPTION
364293-01 (White)	AnyPort Icon Kit
364293-02 (Lt. Almond)	AnyPort Icon Kit
364293-03 (Ivory)	AnyPort Icon Kit



White



Light
Almond



Ivory

Pass & Seymour



On-Q/Legrand® Home Systems Anyport™ Decorator Outlets

AnyPort™ Decorator Outlets come in a variety of configurations to fit many applications and are compatible with most AnyPort™ Application Insert combinations. The outlets feature a non-flexing design that provides security when plugging and unplugging cables.



3-PORT ANYPORT™ DECORATOR OUTLET

Easy leveling to compensate for off-center boxes.

Non-flexing design provides security when plugging and unplugging cables.

Steel threaded inserts with recessed hex design to reduce spin for faceplate mounting.

All openings support AnyPort Application Icons.



364309-01

FEATURES

- Available in white, light almond and ivory.
- Blank, one-, two-, three- and four-port configurations available.
- Snap-in identification icons available.
- Outlets mount in On-Q Installation Brackets or low-voltage mud rings.
- Fits decorator-style face plates.
- UL Listed.
- Supports AnyPort Application Inserts, with most insert combinations compatible.



White



Light
Almond



Ivory

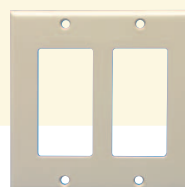
RELATED PRODUCTS



3-PORT ANYPORT™
DESIGNER WALL PLATE
(Inserts Sold Separately)

364309-01 WHITE

3-Port Anyport Decorator Outlet with inserts and Designer Wall Plate are sold separately.



ANYPORT™ DECORATOR
COVER PLATES, DUAL

364548-03 IVORY

ANYPORT™ DECORATOR OUTLETS

PART #	DESCRIPTION
364306-01 (White)	Blank AnyPort Decorator Outlet
364306-02 (Lt. Almond)	Blank AnyPort Decorator Outlet
364306-03 (Ivory)	Blank AnyPort Decorator Outlet
364307-01 (White)	1-Port AnyPort Decorator Outlet
364307-02 (Lt. Almond)	1-Port AnyPort Decorator Outlet
364307-03 (Ivory)	1-Port AnyPort Decorator Outlet
364308-01 (White)	2-Port AnyPort Decorator Outlet
364308-02 (Lt. Almond)	2-Port AnyPort Decorator Outlet
364308-03 (Ivory)	2-Port AnyPort Decorator Outlet

PART #	DESCRIPTION
364309-01 (White)	3-Port AnyPort Decorator Outlet
364309-02 (Lt. Almond)	3-Port AnyPort Decorator Outlet
364309-03 (Ivory)	3-Port AnyPort Decorator Outlet
364310-01 (White)	4-Port AnyPort Decorator Outlet
364310-02 (Lt. Almond)	4-Port AnyPort Decorator Outlet
364310-03 (Ivory)	4-Port AnyPort Decorator Outlet
364547-01 (White)	AnyPort Decorator Cover Plates, Single
364547-02 (Lt. Almond)	AnyPort Decorator Cover Plates, Single
364547-03 (Ivory)	AnyPort Decorator Cover Plates, Single
364548-01 (White)	AnyPort Decorator Cover Plates, Dual
364548-02 (Lt. Almond)	AnyPort Decorator Cover Plates, Dual
364548-03 (Ivory)	AnyPort Decorator Cover Plates, Dual

On-Q/Legrand® Home Systems Anyport™ Application Inserts

Pass & Seymour



On-Q/Legrand® Home Systems

Anyport™ Applications Inserts

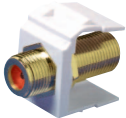
ANYPORT™ APPLICATION INSERTS



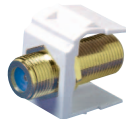
364294-01 (White)



364292-01 (White)



364298-01 (White)



364297-01 (White)



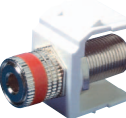
364289-01 (White)



364290-01 (White)



364288-01 (White)



364295-01 (White)

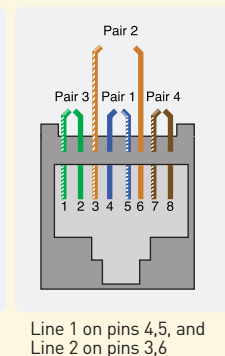
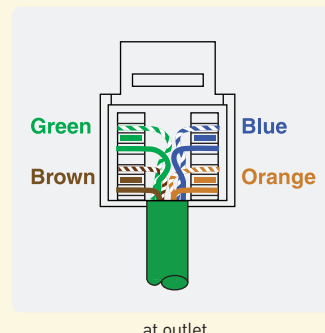
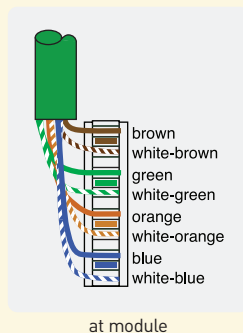


364331-01 (White)

PART #	DESCRIPTION
364294-01 (White)	AnyPort Blank Insert (Bag of 10)
364294-02 (Lt. Almond)	AnyPort Blank Insert (Bag of 10)
364294-03 (Ivory)	AnyPort Blank Insert (Bag of 10)
364292-01 (White)	AnyPort F-Insert
364292-02 (Lt. Almond)	AnyPort F-Insert
364292-03 (Ivory)	AnyPort F-Insert
364292-05 (Black)	AnyPort F-Insert
364298-01 (White)	AnyPort High Performance F-Insert
364298-02 (Lt. Almond)	AnyPort High Performance F-Insert
364298-03 (Ivory)	AnyPort High Performance F-Insert
364297-01 (White)	AnyPort Self Terminating F-Insert
364297-02 (Lt. Almond)	AnyPort Self Terminating F-Insert
364297-03 (Ivory)	AnyPort Self Terminating F-Insert
364289-01 (White)	AnyPort RJ45 Jack Insert, Cat 5e
364289-02 (Lt. Almond)	AnyPort RJ45 Jack Insert, Cat 5e
364289-03 (Ivory)	AnyPort RJ45 Jack Insert, Cat 5e
364289-05 (Black)	AnyPort RJ45 Jack Insert, Cat 5e
364289-06 (Blue)	AnyPort RJ45 Jack Insert, Cat 5e
364289-07 (Orange)	AnyPort RJ45 Jack Insert, Cat 5e
364290-01 (White)	AnyPort RJ45 Jack Insert, Cat 5e , Keyed
364290-02 (Lt. Almond)	AnyPort RJ45 Jack Insert, Cat 5e , Keyed
364290-03 (Ivory)	AnyPort RJ45 Jack Insert, Cat 5e , Keyed
364288-01 (White)	AnyPort RJ-25 Jack Insert
364288-02 (Lt. Almond)	AnyPort RJ-25 Jack Insert
364288-03 (Ivory)	AnyPort RJ-25 Jack Insert
364295-01 (White)	AnyPort Red Audio Binding Post Insert
364295-02 (Lt. Almond)	AnyPort Red Audio Binding Post Insert
364295-03 (Ivory)	AnyPort Red Audio Binding Post Insert
364331-01 (White)	AnyPort Black Audio Binding Post Insert
364331-02 (Lt. Almond)	AnyPort Black Audio Binding Post Insert
364331-03 (Ivory)	AnyPort Black Audio Binding Post Insert

TIPS & TECHNOLOGY: CATEGORY 5 WIRING

- Untwist each wire pair 1/4 turn only, separating the wire into the proper slots of the header. Press each wire until it is well down into the slot.
- Use the 110 Punchdown Tool (part # 363293-01) to terminate the individual wires. Make sure the punch down tool blade is towards the outside of the RJ45 and Telco/Data module.
- Firmly press the tool down onto each wire until a "click" is heard. Be sure the wire is properly in position, and hold the tool vertically over the header, or the wire may not be properly terminated.



On-Q/Legrand® Home Systems Anyport™ Application Inserts

On-Q offers nearly 30 different application inserts, each in a choice of three colors, to cover almost every type of cable connectivity need in the residential market. Whether you're connecting audio, video or data, On-Q has the insert you need.



ANYPORT™ APPLICATION INSERTS



364296-12 (White)



364296-11 (White)



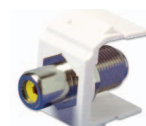
364590-01 (White)



364707-01



364296-13 (White)



364296-15 (White)



364296-14 (White)



364568-05 (Black)

PART #	DESCRIPTION
364296-13 (White)	AnyPort White RCA to F-Insert
364296-23 (Lt. Almond)	AnyPort White RCA to F-Insert
364296-33 (Ivory)	AnyPort White RCA to F-Insert
364296-12 (White)	AnyPort Black RCA to F-Insert
364296-22 (Lt. Almond)	AnyPort Black RCA to F-Insert
364296-32 (Ivory)	AnyPort Black RCA to F-Insert
364296-15 (White)	AnyPort Yellow RCA to F-Insert
364296-25 (Lt. Almond)	AnyPort Yellow RCA to F-Insert
364296-35 (Ivory)	AnyPort Yellow RCA to F-Insert
364296-11 (White)	AnyPort Red RCA to F-Insert
364296-21 (Lt. Almond)	AnyPort Red RCA to F-Insert
364296-31 (Ivory)	AnyPort Red RCA to F-Insert
364296-14 (White)	AnyPort Green RCA to F-Insert
364296-24 (Lt. Almond)	AnyPort Green RCA to F-Insert
364296-34 (Ivory)	AnyPort Green RCA to F-Insert
364590-01 (White)	AnyPort BNC to F-Insert
364590-02 (Lt. Almond)	AnyPort BNC to F-Insert
364590-03 (Ivory)	AnyPort BNC to F-Insert
364568-05 (Black)	AnyPort S-Video Insert
364707-01	ST Coupler (Fiber) Insert

TIPS & TECHNOLOGY: APPLICATION INSERTS

Audio Binding Posts

- Rear screwdown binding post termination for easy installation
- Front permits binding post and banana plug termination

RJ45 Inserts

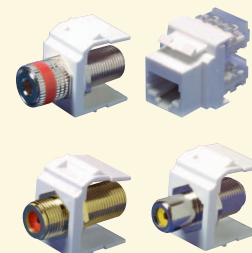
- T568A Cat 5e
- Rear retention caps ensure secure wire termination
- Vertical design for easy punchdown termination
- Available in keyed and unkeyed versions

F-Inserts

- Extra long for easy connections
- Recessed hex nut does not allow jack rotation
- Available in:
 - Standard F
 - Self-Terminating F
 - High-Performance F

RCA to F-Inserts

- Supports distribution of home audio, home theater audio and video
- Standard RCA front jack
- F coaxial rear for high-quality audio and video distribution
- Available with black, white, red, yellow and green centers



On-Q/Legrand® Home Systems Anyport™ Express Inserts

Pass & Seymour



On-Q/Legrand® Home Systems

Anyport™ Express Inserts

ANYPORT™ EXPRESS INSERTS



364571-01 (White)



364572-01 (White)



364574-11 (White)



364574-12 (White)



364574-13 (White)



364574-15 (White)

PART #	DESCRIPTION
364571-01 (White)	AnyPort Express F-Insert
364571-02 (Lt. Almond)	AnyPort Express F-Insert
364571-03 (Ivory)	AnyPort Express F-Insert
364572-01 (White)	AnyPort Express High-Performance F-Insert
364572-02 (Lt. Almond)	AnyPort Express High-Performance F-Insert
364572-03 (Ivory)	AnyPort Express High-Performance F-Insert
364574-11 (White)	AnyPort Express Red RCA Insert
364574-21 (Lt. Almond)	AnyPort Express Red RCA Insert
364574-31 (Ivory)	AnyPort Express Red RCA Insert
364574-12 (White)	AnyPort Express Black RCA Insert
364574-22 (Lt. Almond)	AnyPort Express Black RCA Insert
364574-32 (Ivory)	AnyPort Express Black RCA Insert
364574-13 (White)	AnyPort Express White RCA Insert
364574-23 (Lt. Almond)	AnyPort Express White RCA Insert
364574-33 (Ivory)	AnyPort Express White RCA Insert
364574-15 (White)	AnyPort Express Yellow RCA Insert
364574-25 (Lt. Almond)	AnyPort Express Yellow RCA Insert
364574-35 (Ivory)	AnyPort Express Yellow RCA Insert

ANYPORT™ EXPRESS PLUGS

AnyPort Express Plugs terminate RG-6 Quad Shield coax cable using a quick one-step crimp for superior connection.



364582-01



364584-13 (White)



364585-01

PART #	DESCRIPTION
364582-01	AnyPort Express F-Plug
364584-11 (Red)	AnyPort Express RCA Plug
364584-12 (Black)	AnyPort Express RCA Plug
364584-13 (White)	AnyPort Express RCA Plug
364584-15 (Yellow)	AnyPort Express RCA Plug
364585-01	AnyPort Express BNC Plug

EXPRESS MINI COAX PLUGS

Connectors specifically designed for use with On-Q Express Mini Coax cable. Compression style used for head end installations.



364682-01



364683-01



364684-01

PART #	DESCRIPTION
364682-01	Express Mini Coax F-Plug
364683-01	Express Mini Coax RCA Plug
364684-01	Express Mini Coax BNC Plug

On-Q/Legrand® Home Systems Anyport™ Outlet Kits

On-Q has packaged many combinations of the most commonly used AnyPort™ Wall Plates and Application Inserts so you can conveniently purchase the whole kit rather than pairing the individual parts.



ANYPORT™ OUTLET KITS WITH ONE JACK OR CONNECTOR



364313-12 (White)



364314-13 (White)



364545-13 (White)

PART #	DESCRIPTION
364313-11 (White)	AnyPort Decorator Single Telecom Outlet Kit
364313-21 (Lt. Almond)	One-opening AnyPort Decorator outlet, one RJ45 jack.
364313-31 (Ivory)	
364313-12 (White)	AnyPort Decorator Single Video Outlet Kit
364313-22 (Lt. Almond)	One-opening AnyPort Decorator outlet, one coaxial F-jack.
364313-32 (Ivory)	
364314-11 (White)	AnyPort Designer Single Telecom Outlet Kit
364314-21 (Lt. Almond)	One-opening AnyPort Wall Plate, one RJ45 jack.
364314-31 (Ivory)	
364314-12 (White)	AnyPort Designer Single Video Outlet Kit
364314-22 (Lt. Almond)	One-opening AnyPort Wall Plate, one coaxial F-jack.
364314-32 (Ivory)	
364314-13 (White)	AnyPort Designer Single Data Outlet Kit
364314-23 (Lt. Almond)	One-opening AnyPort Wall Plate, one keyed RJ45 jack.
364314-33 (Ivory)	
364545-11 (White)	ValuePort Single Telecom Outlet Kit
364545-21 (Lt. Almond)	One-opening ValuePort Wall Plate, one RJ45 jack.
364545-31 (Ivory)	
364545-12 (White)	ValuePort Single Video Outlet Kit
364545-22 (Lt. Almond)	One-opening ValuePort Wall Plate, one coaxial F-jack.
364545-32 (Ivory)	
364545-13 (White)	ValuePort Single Data Outlet Kit
364545-23 (Lt. Almond)	One-opening ValuePort Wall Plate, one keyed RJ45 jack.
364545-33 (Ivory)	

RELATED PRODUCTS



ANYPORT™ OUTLET
KITS WITH TWO JACKS
OR CONNECTORS
364318-11



ANYPORT™ OUTLET KITS
WITH THREE JACKS OR
CONNECTORS
364317-11

PART #	DESCRIPTION
364318-11 (White)	AnyPort Designer Video/Telecom Outlet Kit
364318-21 (Lt. Almond)	Two-opening AnyPort Wall Plate, one coaxial F-connector and one RJ45 jack.
364318-31 (Ivory)	An ideal outlet for a digital satellite receiver.
364318-12 (White)	AnyPort Designer Dual Video Outlet Kit
	Two-opening AnyPort Wall Plate and two coaxial F-jacks.
	Used primarily in homes where the CATV service is delivered over two cables.
364317-11 (White)	AnyPort Decorator Video/Telecom/Data Outlet Kit
	Three-opening Decorator Outlet, one coaxial F-connector, one RJ45 jack and one keyed RJ45 jack.

On-Q/Legrand® Home Systems Anyport™ Outlet Kits

Pass & Seymour



ANYPORT™ OUTLET KITS WITH FOUR JACKS OR CONNECTORS



364322-11 (White)

PART #	DESCRIPTION
364322-11 (White)	AnyPort Designer Dual Video/Telecom/Data Outlet Kit
364322-21 (Lt. Almond)	Four-opening AnyPort Designer Outlet, two coaxial F-connectors, one RJ45 jack and one keyed RJ45 jack.
364322-31 (Ivory)	
364322-12 (White)	AnyPort Designer Dual Telecom/Dual Video Outlet Kit
364322-22 (Lt. Almond)	Four-opening AnyPort Designer Outlet, two coaxial F-connectors and two RJ45 jacks.
364322-32 (Ivory)	
364556-11 (White)	ValuePort Dual Speaker Outlet Kit
364556-21 (Lt. Almond)	Four-opening ValuePort Wall Plate, two red audio binding posts and two black audio binding posts.
364556-31 (Ivory)	

ANYPORT™ OUTLET KITS WITH SIX JACKS OR CONNECTORS

PART #	DESCRIPTION
364423-11 (White)	AnyPort Designer Triple Video/Telecom/Data Outlet Kit
364423-21 (Lt. Almond)	Six-opening AnyPort Designer Outlet, three coaxial F-connectors, one RJ45 jack and one keyed RJ45 jack.
364423-31 (Ivory)	
364546-11 (White)	ValuePort Triple Video/Telecom/Data Outlet Kit
364546-21 (Lt. Almond)	Six-opening ValuePort Outlet, three coaxial F-connectors, one RJ45 jack and one keyed RJ45 jack.
364546-31 (Ivory)	



364423-11 (White)

VALUEPORT™ WALL TELEPHONE KITS



364814-11 (White)

PART #	DESCRIPTION
363814-11 (White)	ValuePort Single Telecom Wall Outlet Kit - RJ45
363814-31 (Ivory)	Eight position jack hanging wall phone outlet.
363814-12 (White)	ValuePort Single Telecom Wall Outlet Kit - RJ-25
363814-32 (Ivory)	Six position hanging wall phone outlet.

HIDE-A-PORT™ OUTLET KITS WITH FOUR JACKS OR CONNECTORS

PART #	DESCRIPTION
364330-11 (White)	Hide-A-Port Dual Telecom/Video/Data Outlet Kit
364330-21 (Lt. Almond)	On-Q Hide-A-Port, two RJ45 jacks, one keyed RJ45 jack, one coaxial F-connector. Ideal for the room set up as a home office.
364330-31 (Ivory)	
364330-12 (White)	Hide-A-Port Dual Video/Telecom/Data Outlet Kit
364330-22 (Lt. Almond)	On-Q Hide-A-Port, two coaxial F-connectors, one RJ45 jack and one keyed RJ45 jack.
364330-32 (Ivory)	



364330-11 (White)

On-Q/Legrand® Home Systems Installation Tools

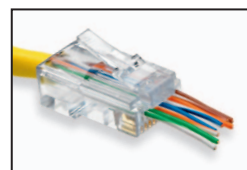
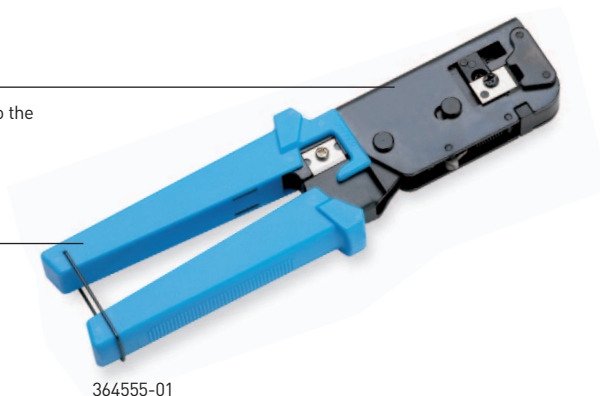
Whether you're crimping, tightening, terminating or stripping, On-Q offers all of the professional quality tools you need on the job site.



EZ-RJ45 MODULAR PLUG HAND TOOL

Used to terminate Cat 5e cable to the EZ-RJ45 Modular Plug.

Convenient trimmer trims cable in a single motion.



Simplify terminations. The EZ Crimp Plug allows wires to be inserted through the plug. Wires extending out make it easy to verify wire sequence.

RELATED PRODUCTS



RADIAL TAPER
COMPRESSION TOOL

364247-01



RG-6 COAX
STRIPPER

362721-02



Cat 5e STRIP AND
FIT TOOL

363292-01

INSTALLATION TOOLS

PART #	DESCRIPTION
364247-01	Radial Taper Compression Tool
364347-01	Extended Coax Connector Wrench
364346-01	Coax Flaring and Insertion Tool
363291-01	Coax Hex Crimp Tool
362721-02	RG-6 Coax Stripper
362863-02	Replacement Blade Cartridge, Coax Stripper
364276-01	UTP/Coax Cable Tester w/Remote
364340-01	Replacement RJ45 Jumpers with UTP Tester
364277-01	Tone Probe Tester
363293-01	110 Punchdown Tool, Impact

PART #	DESCRIPTION
364378-01	Palm Tool – Vertical-Style RJ45
364406-01	High-Performance RJ45 Modular Plug Hand Tool
364685-01	Mini Coax Stripper
364687-01	Mini Coax Stripper Replacement Blades
364579-01	AnyPort Express Coax Crimp Tool
364555-01	EZ-RJ45 Modular Plug Hand Tool
364646-01	EZ-RJ45 Tool Replacement Blade (2 Pack)
364710-01	Express Universal Compression Tool
364483-01	Basic Installation Video
363292-01	Cat 5e Strip and Fit Tool

EXPRESS UNIVERSAL COMPRESSION TOOL



364710-01

FEATURES

- Terminates F, RCA and BNC fittings.
- Fully adjustable clamp provides watertight termination of On-Q AnyPort Inserts, AnyPort Express Plugs and Express Mini-Coax Plugs.
- Features one-cycle full ratchet mechanism.
- Comfortable grip handles for reduced hand fatigue.

RELATED PRODUCTS



ANYLINE ADAPTER
364260-01



360 CONICAL COAX
F-PLUG
364246-01



12" MINI COAX
JUMPER ASSEMBLY
364597-01

TOOLS, ADAPTERS & ACCESSORIES

PART #	DESCRIPTION
364579-01	AnyPort Express Coax Crimp Tool
364710-01	Express Universal Compression Tool
364338-01	AnyPort F to RCA Adapter
364774-01	AnyPort F to Twin Lead Adapter
364260-01	AnyLine Adapter
364686-01	Mini Coax Cable, 250', Red
364686-02	Mini Coax Cable, 250', Yellow
364686-03	Mini Coax Cable, 250', Blue
364686-04	Mini Coax Cable, 250', Black
364686-05	Mini Coax Cable, 250', White
364686-06	Mini Coax Cable, 250', Green
363201-27	6" Cat 5e RJ45 Jumper Assembly, Red Boots
363201-26	12" Cat 5e RJ45 Jumper Assembly, Red Boots
363201-25	24" Cat 5e RJ45 Jumper Assembly, Red Boots
363201-30	36" Cat 5e RJ45 Jumper Assembly, Red Boots

ACCESSORIES & CONNECTORS

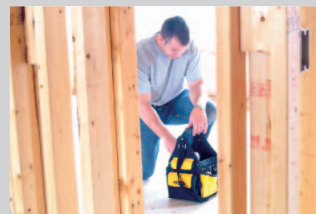
PART #	DESCRIPTION
364489-01	84" Jumper Cable
364489-02	168" Jumper Cable
364597-01	12" Mini Coax Jumper Assembly
364597-02	18" Mini Coax Jumper Assembly
364597-03	24" Mini Coax Jumper Assembly
364597-04	36" Mini Coax Jumper Assembly
364597-05	48" Mini Coax Jumper Assembly
364246-01	360 Conical Coax F-Plug
363729-01	Module Grommet/Plunger Replacement Kit
363140-03	Coax F-Plug, RG-6 Quad Shield, Hex Crimp
364246-02	Sealed Conical Coax F-Plug
364554-01	EZ-RJ45 Modular Plug
364405-01	High-Performance RJ45 Modular Plug
363491-01	Velcro® Tie Straps
364412-01	Terminators, 75 Ohm

Pass & Seymour



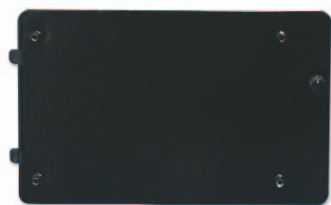
On-Q/Legrand® Home Systems Security Controller Mounting Brackets

- Provides a clean and organized solution for installing security and structured wiring.
- Supports installation of third-party security controllers into an On-Q enclosure.
- Provides security connection point for telephone line seizure.
- Additional security mounting plates are available from NAPCO (sold by the respective manufacturer).



Controller Manufacturer	Model / System			Plate Description	Supplier	Part Number	Dimensions H x W	Instruction Sheet
Ademco	Vista-15	Vista-20SE		Ademco 1/2	On-Q	364714-08	8.9 x 6.42	IS-0255
	Vista-15P	Vista-20P		Width Mounting Plate				
	4140-XM			Ademco Universal Controller Mounting Plate	On-Q	364715-01	8.9 x 12.95	IS-0255
	4140-XMPT	Vista-40	Vista-20Pw					
	4140XMPT2	Vista-50	Vista-100					
	Vista-15	Vista-50P	Vista-128B					
Vista-15P	Vista-20SE	Vista-128-BP						
for zone expansion			Ademco Universal Expansion Plate	On-Q	364433-01	6.9 x 6.42	IS-0255	
Apex	Destiny 6100		Ademco Universal Controller Mounting Plate	On-Q	364715-01	8.9 x 12.95	IS-0255	
	for zone expansion		Ademco Universal Expansion Plate	On-Q	364433-01	6.9 x 6.42	IS-0255	
Bosch	Bosch 2000 series		Bosch 2000 & 6000 Series Controller Mounting Plate	On-Q	364640-01	7.90 x 6.42	IS-0223	
	Bosch 6000 series							
	Bosch 9000 series		Bosch 9000 Series Controller Mounting Plate	On-Q	364639-01	9.9 x 12.95	IS-0222	
Caddx	NetworX NX-6, NX-8		Caddx Mounting Plate	On-Q	364259-01	5.9 x 12.95	IS-0076	
	NetworX NX-4, NX-6, NX-8		Caddx NetworX Series Mounting Plate	On-Q	364516-01	3.9 x 12.95	IS-0163	
DSC	1555 Controller		DSC 1555 1/2 Mounting Plate	On-Q	364465-01	3.9 x 6.42	IS-0146	
	832 or 1555 Controllers		DSC Universal Mounting Plate	On-Q	364466-01	3.9 x 12.95	IS-0146	
Detection Systems	7200 Series		Series 7200 Mounting Plate	On-Q	364612-01	7.9 x 6.42	IS-0193	
	7400 Series		Series 7400 Mounting Plate	On-Q	364611-01	9.9 x 6.42	IS-0193	
	Expansion Modules		Expansion Module Mounting Plate	On-Q	364613-01	2.9 x 6.42	IS-0193	
First Alert	FA 162C	FA 148CP		Ademco 1/2 Width Mounting Plate	On-Q	364714-08	8.9 x 6.42	IS-0255
	FA 148C	FA 168C						
	FA 148C	FA 1300C	FA 1600CA	Ademco Universal Controller Mounting Plate	On-Q	364715-01	8.9 x 12.95	IS-0255
	FA 148CP	FA 1330C	FA 1600CB					
	FA 1200C	FA1220C	FA 1660CB					
	FA 162C	FA 1220CV						
FA 168C	FA 1340C							
for zone expansion			Ademco Universal Expansion Plate	On-Q	364433-01	6.9 x 6.42	IS-0255	
ITI	Concord Series and Snap Cards		ITI Concord and Concord Express Mounting Plate (Universal Plate)	On-Q	364463-01	6.9 x 12.95	IS-0164	
Intellisense Sierra	Intellisense Sierra S5832		Intellisense Sierra Mounting Plate	On-Q	364515-01	7.9 x 6.42	IS-0168	
Napco	Gemini Controllers: Gem-P816, Gem-P1632		Adaptor for Gem-P816 and Gem-P1632	Napco	ONQ816-1632	6.9 x 6.42	WI-1065	
	Gemini Controllers: Gem-P3200, Gem-P9600		Adaptor for Gem-P3200 and Gem-P9600	Napco	ONQ3200-9600	6.55 x 12.95	WI-1064	
OnQ HMS Expansion	On-Q HMS Add-On Modules		On-Q HMS Expansion Mounting Plate Kit	On-Q	364270-01	7.9 x 6.42	IS-0061	
Optex	Optex Vision Security Systems		Optex Mounting Plate	On-Q	364514-01	7.9 x 6.42	IS-0169	
Paradox	Espirit, Spectra, and Digiplex Controllers		Paradox Controller Mounting Plate	On-Q	364637-01	7.9 x 6.42	IS-0216	
	Expansion Modules		Paradox Expansion Module Mounting Plate	On-Q	364638-01	2.9 x 6.42	IS-0216	

ADEMCO CONTROLLER MOUNTING PLATES



364433-01

PART #	DESCRIPTION
364433-01	Ademco Universal Expansion Plate 6.9"H x 6.42"W
364714-08	Ademco Half Width Controller Mounting Plate 8.9"H x 6.42"W
364715-01	Ademco Universal Controller Mounting Plate 8.9"H x 12.95"W

CADDX CONTROLLER MOUNTING PLATES

PART #	DESCRIPTION
364259-01	Caddx Mounting Plate 5.9"H x 12.95"W
364516-01	Caddx NetworX Series Mounting Plate 3.9"H x 12.95"W



364259-01

DSC CONTROLLER MOUNTING PLATES



364466-01

PART #	DESCRIPTION
364466-01	DSC 832/1555 Mounting Plate, Full Width 3.9"H x 12.95"W
364465-01	DSC 1555 Mounting Plate, Half Width 3.9"H x 6.42"W

MOUNTING PLATES

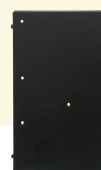


BOSCH 9000 SERIES
CONTROLLER
MOUNTING PLATES
364639-01



PARADOX CONTROLLER
MOUNTING PLATES

364637-01



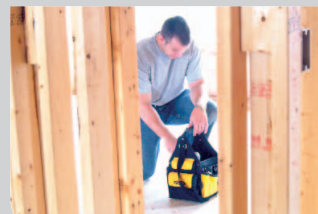
DETECTION SYSTEMS
MOUNTING PLATE
SERIES 7400
364611-01

PART #	DESCRIPTION
364639-01	Bosch 9000 Series Controller Mounting Plate 9.9"H x 12.95"W
364640-01	Bosch 2000 & 6000 Series Controller Mounting Plate 7.9"H x 6.42"W
364637-01	Paradox Controller Mounting Plate 7.9"H x 6.42"W
364638-01	Paradox Expansion Module Mounting Plate 7.9"H x 6.42"W

PART #	DESCRIPTION
364611-01	Detection Systems Series 7400 Mounting Plate 9.9"H x 6.42"W
364612-01	Detection Systems Series 7200 Mounting Plate 7.9"H x 6.42"W
364613-01	Detection Systems Expansion Module Mounting Plate 2.9"H x 6.42"W

On-Q/Legrand® Home Systems Mounting Plates

On-Q Mounting Plates provide a clean and organized solution for installing third-party security controllers into On-Q Enclosures, and they provide a security connection point for telephone line seizure.



ITI CONTROLLER MOUNTING PLATE



364463-01

PART #	DESCRIPTION
364463-01	ITI Concord and Concord Express Mounting Plate 6.9"H x 12.95"W

OPTEX CONTROLLER MOUNTING PLATE

PART #	DESCRIPTION
364514-01	Optex Mounting Plate 7.9"H x 6.42"W



364514-01

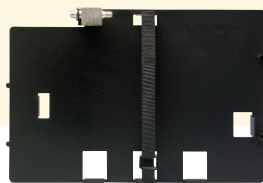
INTELLISENSE CONTROLLER MOUNTING PLATE



364515-01

PART #	DESCRIPTION
364515-01	Intellisense Sierra Mounting Plate 7.9"H x 6.42"W

RELATED PRODUCTS



CABLE MODEM
MOUNTING PLATE
364254-01



SPAUN SMS 5801 NF MULTI-
SWITCH MOUNTING PLATE
364481-01

PART #	DESCRIPTION
364254-01	Cable Modem Mounting Plate
364481-01	Spaun SMS 5801 NF Multi-Switch Mounting Plate
364481-02	Spaun SMS 5802 NF Multi-Switch Mounting Plate

MUD RING, NEW CONSTRUCTION

Designed for use with dual-gang openings that allow for multiple combinations of AnyPort Wall Plate Outlets or Impedance-Matching Volume Controls. Open back and integrated cable management system for easy cable connections.

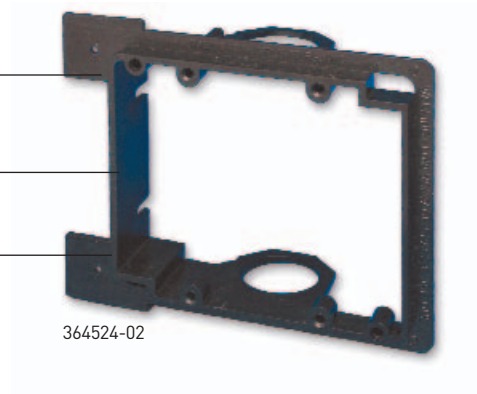
FEATURES

- Designed for use with AnyPort Wall Plates, volume controls, and On-Q Impedance-Matching Volume Controls.
- Single and dual sizes for new and retrofit applications.
- Integrated cable management system.
- Flexible plastic retains shape for ease of alignment during installation.

Durable tabbed mounting system for secure fit.

Open back construction for easy cable connections.

Integrated cable management system.



364524-02

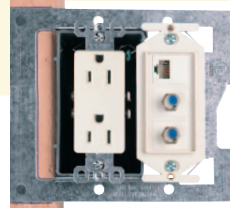
RELATED PRODUCTS



MUD RING, RETROFIT

364525-01

Open back for easy cable connections. Screw hold-down tabs allow outlet placement virtually anywhere on wall.



ROUGH-IN BRACKET

F7511

On-Q brackets are a fast, easy, economical way to provide network outlets adjacent to electrical wiring devices. Standard decorator wall plates finish both electrical devices and network wiring outlets.

INSTALLATION BRACKETS

PART #	DESCRIPTION
364524-01	Single Mud Ring, New Construction
364524-02	Dual Mud Ring, New Construction
364525-01	Single Mud Ring, Retrofit
364525-02	Dual Mud Ring, Retrofit
F7511	Rough-in Bracket (one electric, one low-voltage)
F7512	Rough-in Bracket (one electric, two low-voltage)
F7514	Rough-in Bracket (two electric, one low-voltage)
F7515	Rough-in Bracket (two electric, two low-voltage)

Pass & Seymour



On-Q/Legrand® Home Systems Entertainment



Imagine your favorite song playing throughout your home as you move from room to room. From amazing audio to spine-tingling gaming, On-Q Entertainment products offer your customers all of the exciting top entertainment choices with none of the connection complications. Allow your customers to experience sights and sounds that will change their lifestyle.

Video Modules	0-40 – 0-43	lyriQ™ Audio System	0-48 – 0-50
Digital Satellite Modules	0-44, 0-45	evōQ™ Speakers	0-51 – 0-54
Video Engine Module	0-46	Impedance Audio System	0-54
Video Accessories	0-47	Home Entertainment Connection Center	0-55

On-Q/Legrand® Home Systems Passive Video Modules

On-Q Passive Video Modules distribute or combine RF (Cable TV or other off-air signals) to multiple television outlets throughout the home. The modules have F-style fittings for connecting incoming and outgoing cables and are available in 1 GHz and 2 GHz versions.



PASSIVE VIDEO MODULES

Distributes a CATV or antenna signal to four, six or eight television outlets.

Features gold plated 2 GHz high-performance connections for digital satellite service.



364222-01

FEATURES

- Distributes CATV signals to up to eight television outlets throughout the home.
- CEBus® network support for external/internal video distribution.
- Vertical cable access provides for easier cable attachment to the modules.
- 2 GHz models support whole house distribution of larger bandwidth applications.
- Two-way transmission supports addressable set-top boxes and future Internet services.
- DBS models support digital satellite installations with dual LNB connections.
- Compliant with EIA/TIA 570A Grade 2 standards.
- Features the patented On-Q mounting system.

RELATED PRODUCTS



PASSIVE VIDEO
MODULES, NON-DBS

364649-11

Distributes a CATV or antenna signal to four, six or eight television outlets. (Does not support dual LNB connections for digital satellite systems.)

PASSIVE VIDEO MODULES

PART #	DESCRIPTION
364222-01	1x4 Passive Video Module, DBS, 1 GHz
364223-01	1x6 Passive Video Module, DBS, 1 GHz
364224-01	1x8 Passive Video Module, DBS, 1 GHz
364222-11	1x4 Passive Video Module, DBS, 2 GHz
364223-11	1x6 Passive Video Module, DBS, 2 GHz
364224-11	1x8 Passive Video Module, DBS, 2 GHz

PART #	DESCRIPTION
364647-01	1x4 Passive Video Module, Non-DBS, 1 GHz
364648-01	1x6 Passive Video Module, Non-DBS, 1 GHz
364649-01	1x8 Passive Video Module, Non-DBS, 1 GHz
364647-11	1x4 Passive Video Module, Non-DBS, 2 GHz
364648-11	1x6 Passive Video Module, Non-DBS, 2 GHz
364649-11	1x8 Passive Video Module, Non-DBS, 2 GHz
364502-01	1x8 Passive Video Module, 2 GHz, DC Passing
364521-01*	1x16 Passive Video Module, 1 GHz

* No vertical orientation

On-Q/Legrand® Home Systems CEBus® Video Modules

Pass & Seymour



CEBUS® VIDEO MODULES

Integrated 2:1 combiner redistributes internal video and cable TV signals.

Distributes video from internal sources such as security cameras or VCR/DVD players.



364225-01

FEATURES

- Combines cable TV signal and four, six or eight internal video/auxiliary video signals.
- Used in conjunction with a passive video module, which distributes the combined signal to television outlets throughout the home.

CEBUS® VIDEO MODULES

PART #	DESCRIPTION	BANDWIDTH
364225-01	1x4 CEBus Video Module	1 GHz
364226-01	1x6 CEBus Video Module	1 GHz
364227-01	1x8 CEBus Video Module	1 GHz
364225-11	1x4 CEBus Video Module	2 GHz
364226-11	1x6 CEBus Video Module	2 GHz
364227-11	1x8 CEBus Video Module	2 GHz

TECHNICAL SPECIFICATIONS

	1x4 Passive Video (364222-01, 364225-01, 364647-01)	1x6 Passive Video (364223-01, 364226-01, 364648-01)	1x8 Passive Video (364224-01, 364227-01, 364649-01)	1x16 Passive Video (364521-01)
1 GHz MODULES				
INSERTION LOSS				
5-10 MHz	7 dB Max.	9 dB Max.	11 dB Max.	15 dB Max.
10-600 MHz	8 dB Max.	10 dB Max.	12 dB Max.	16 dB Max.
600-1000 MHz	8 dB Max.	11.5 dB Max.	12 dB Max.	17 dB Max.
INPUT RETURN LOSS				
5-10 MHz	-18 dB Max.	-18 dB Max.	-18 dB Max.	-18 dB Max.
10-600 MHz	-20 dB Max.	-20 dB Max.	-20 dB Max.	-15 dB Max.
600-1000 MHz	-16 dB Max.	-16 dB Max.	-16 dB Max.	-15 dB Max.
PORT TO PORT ISOLATION				
5-10 MHz	-25 dB Max.	-25 dB Max.	-25 dB Max.	-25 dB Max.
10-600 MHz	-25 dB Max.	-25 dB Max.	-25 dB Max.	-25 dB Max.
600-1000 MHz	-22 dB Max.	-20 dB Max.	-20 dB Max.	-22 dB Max.
2 GHz MODULES				
	1x4 Passive Video (364222-11, 364647-11, 364225-11)	1x6 Passive Video (364223-11, 364648-11, 364226-11)	1x8 Passive Video (364224-11, 364649-11, 364227-11, 364502-01)	
INSERTION LOSS				
5-10 MHz	8 dB Max.	11.5 dB Max.	13.5 dB Max.	
10-600 MHz	8.5 dB Max.	12.5 dB Max.	14 dB Max.	
600-1000 MHz	9 dB Max.	13.2 dB Max.	15 dB Max.	
900-2050 MHz	12 dB Max.	15 dB Max.	17 dB Max.	
INPUT RETURN LOSS				
5-10 MHz	-10 dB Max.	-8 dB Max.	-8 dB Max.	
10-600 MHz	-11 dB Max.	-11 dB Max.	-11 dB Max.	
600-1000 MHz	-15 dB Max.	-12 dB Max.	-12 dB Max.	
900-2050 MHz	-16 dB Max.	-12 dB Max.	-12 dB Max.	
PORT TO PORT ISOLATION				
5-10 MHz	-20 dB Max.	-20 dB Max.	-20 dB Max.	
10-600 MHz	-20 dB Max.	-20 dB Max.	-20 dB Max.	
600-1000 MHz	-20 dB Max.	-20 dB Max.	-20 dB Max.	
900-2050 MHz	-21 dB Max.	-21 dB Max.	-21 dB Max.	

Pass & Seymour



On-Q/Legrand® Home Systems Enhanced Video Modules

On-Q Enhanced Video Modules provide clear, sharp video signals for up to 16 outlets, allowing family members to simultaneously watch different shows using the same CATV or antenna signal. The modules include a built-in, two-way amplifier with reverse path amplification that is engineered to have zero signal strength loss (unity gain) when distributing to multiple outlets.



ENHANCED VIDEO MODULE

Supports modulated video signal distribution from security and baby room cameras or VCR/DVD players.

Distributes CATV signal for up to 16 television outlets.

Features an integrated power LED and reverse-path amplification for set top-box transmission.

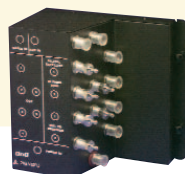


364522-01

FEATURES

- All modules support digital satellite installation through a dual LNB satellite antenna feedthrough.
- Distributes CATV signals for up to 16 television outlets.
- Supports modulated video signal distribution from security and baby room cameras or VCR/DVD players.
- Two-way transmission with reverse path amplification supports addressable set-top boxes and future Internet services.
- Engineered to have zero signal strength loss (unity gain).
- Integrated power LED.

RELATED PRODUCTS



2X6 ENHANCED VIDEO
MODULE

363468-02



3X8 ENHANCED VIDEO
MODULE

363469-02

ENHANCED VIDEO MODULES

PART #	DESCRIPTION	BANDWIDTH	AMP
364522-01	2x16 Enhanced Video Module	1 GHz	Yes
363468-02	2x6 Enhanced Video Module	1 GHz	Yes
363469-02	3x8 Enhanced Video Module	1 GHz	Yes

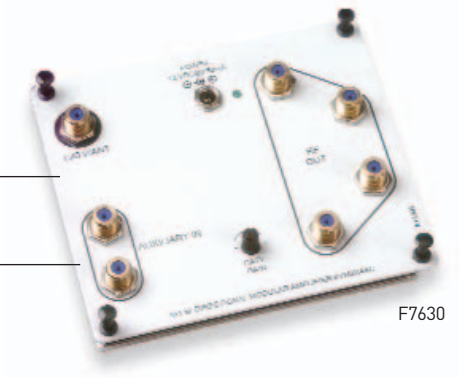
VIDEO POWER TRANSFORMERS

PART #	DESCRIPTION
364271-01	Non-RPA 12 VDC, 200 mA transformer for the 2x6 Enhanced Video Module [363468-02] or the 3x8 Enhanced Video Module [363469-02]
364271-03	RPA 10 VDC, 400 mA transformer for the 2x6 [363468-02] or the 3x8 [363469-02] Enhanced Video Modules. Can also be used with the Video Engine [364219-01] or 2x16 Enhanced Video Module [364522-01]

3X4 ENHANCED BI-DIRECTIONAL VIDEO AMPLIFIER

Built-in variable attenuator to control incoming signal strength.

Four high gain outputs for driving additional passive video modules.



FEATURES

- Expandable to 32 amplified video outputs and 17 video inputs.
- Uses patented self-terminating F-Connectors for optimum picture quality.
- Use in conjunction with a video splitter/combiner.
- Designed to work in the Titan™ Series Enclosures.

1X8 PASSIVE VIDEO MODULE

High-performance splitter designed for digital cable, On Demand, Pay-per-View and high-speed cable Internet.

Performance identical to cable company approved Antronix CMC300 Series.



FEATURES

- Handles up to eight outputs and one input.
- Ideal for use with digital cable TV or antenna.
- 1 GHz Bandwidth.
- DC passing between all ports.
- Uses standard F type connectors.

RELATED PRODUCTS



2X2 ENHANCED BI-DIRECTIONAL VIDEO AMPLIFIER

F7632



1X4 PASSIVE VIDEO MODULE

VM1X4PC

MODULAR VIDEO COMPONENTS

PART #	DESCRIPTION	BANDWIDTH	AMPLIFICATION
F7640*	1x1 Bi-Directional Video Amplifier	1 GHz	Yes
F7632*	2x2 Enhanced Bi-Directional Video Amplifier	1 GHz	Yes
F7630*	3x4 Enhanced Bi-Directional Video Amplifier	1 GHz	Yes
VM1X4PC	1x4 Passive Video Splitter/Combiner	1 GHz	No
VM1X6PC	1x6 Passive Video Splitter/Combiner	1 GHz	No
VM1X8PC	1x8 Passive Video Splitter/Combiner	1 GHz	No

*Amplified components require 12 VDC only.

On-Q/Legrand® Home Systems Digital Satellite Modules

The Advanced 5x8 Four LNB Multi-Switch is designed for DIRECTV® installations. It allows up to eight satellite receivers to be connected to a Quad LNB Dish (four LNB connections total). This multi-switch has a non-amplified antenna (or cable) input to facilitate combining of terrestrial and satellite information over a single RG-6 coaxial cable run. Unique wire management is utilized through integrated lacing bars built into the switch, from which wiring can be secured.

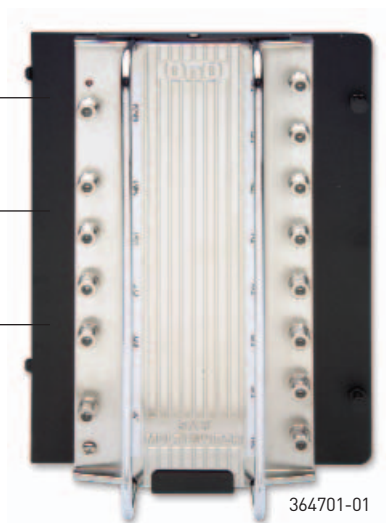


ADVANCED 5X8 FOUR LNB MULTI-SWITCH

Ability to distribute digital satellite up to eight satellite receivers.

Integrated lacing bars for improved wire management.

Designed for DIRECTV® applications.



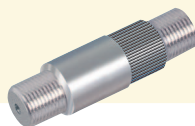
FEATURES

- All modules support DIRECTV® digital satellite service.
- Cost-effective distribution of the CATV/off-air antenna and DBS signal over one cable.
- Ability to support up to eight satellite receivers.
- High-performance fittings to ensure high-quality connections.
- Easily relocate satellite services from room to room.

TECHNICAL SPECIFICATIONS

Input Bands	Satellite: 950-2150 MHz Terrestrial: 54-850 MHz	Control Voltage	13/17 VDC between left and right polarization
Noise Figure	Satellite: 6 dB Terrestrial: 4 dB	Control Signals	22 KHz between satellites
Output Return Loss	14 dB	Cross Polar Isolation	30 dB
		24 V DC Power Supply	

RELATED PRODUCTS



SATELLITE SURGE PROTECTOR

364746-01

The On-Q Satellite Surge Suppressor protects the satellite receiver, multi-switch and television monitor from harmful voltage. If an incoming satellite signal would take a hit from a nearby lightning spike, this surge suppressor would dissipate harmful energy before it reaches any electronic components down the line.

DIGITAL SATELLITE MODULES

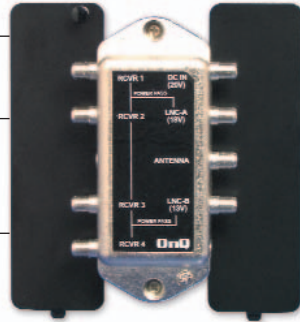
PART #	DESCRIPTION
364701-01	Advanced 5x8 Four LNB Multi-Switch
364727-01	Replacement Power Supply - Advanced 5x8 Four LNB Multi-Switch
364746-01	Satellite Surge Protector

DBS 4-WAY MULTI-SWITCH

Built-in diplex filter.

Ability to show digital satellite programming on up to four TVs independently.

High performance digital satellite connections.



364228-01

FEATURES

- Combines dual LNB connections from the satellite dish with a cable TV or antenna signal for distribution via a single coaxial cable to up to four receivers.
- Designed for DIRECTV® applications.

TECHNICAL SPECIFICATIONS

	Diplex Filter Module (364216-01)	Diplex Filter Assembly (364218-01)
BANDWIDTH		
Satellite	950-2050 MHz	950-2050 MHz
VHF/UHF	40-860 MHz	40-860 MHz
INSERTION LOSS		
Satellite	-2.8 dB Max.	-2.8 dB Max.
VHF/UHF	-1 dB Max.	-1 dB Max.
INPUT RETURN LOSS		
Satellite	9 dB Min.	9 dB Min.
VHF/UHF	9 dB Min.	9 dB Min.
STOP BAND ATTENUATION		
VHF/UHF (950 MHz)	22 dB Min.	22 dB Min.
VHF/UHF (1.0-1.5 GHz)	38 dB Min.	38 dB Min.
Satellite (860 MHz)	25 dB Min.	25 dB Min.
Satellite (40-806 MHz)	38 dB Min.	38 dB Min.

RELATED PRODUCTS



DBS DIPLEX FILTER
MODULE

364216-01



1X4 SATELLITE
DISTRIBUTION MODULE

F7634



DBS DIPLEX FILTER
ASSEMBLY

364218-01

SATELLITE VIDEO MODULES

PART #	DESCRIPTION
364228-01	DBS 4-Way Multi-Switch
F7634	1x4 Satellite Distribution Module
364271-02	Power Transformer for Multi-Switch, 20 VDC, 500 mA
364216-01	DBS Diplex Filter Module
364218-01	DBS Diplex Filter Assembly
364481-01	Spaun SMS 5801 NF Multi-Switch Mounting Plate
364481-02	Spaun SMS 5802 NF Multi-Switch Mounting Plate

Pass & Seymour



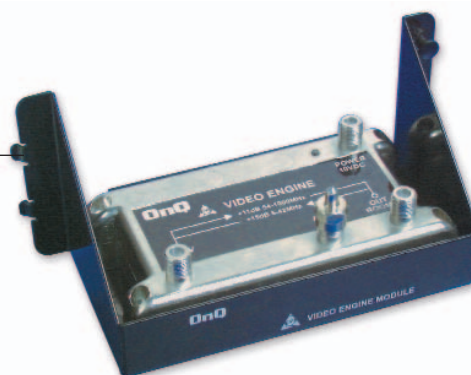
On-Q/Legrand® Home Systems Video Engine Module

If your customer's current video signal isn't strong enough, add the On-Q Video Engine to provide video signal amplification for incoming cable TV, antenna and auxiliary video signals. The Video Engine's bi-directional amplification supports set-top boxes for pay-per-view movies and interactive TV.



VIDEO ENGINE

Provides video signal amplification for incoming cable TV, antenna and auxiliary video signals.

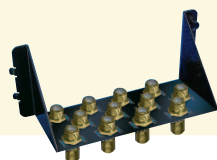


364219-01/364523-01

FEATURES

- Bi-directional amplification supports set-top box for pay-per-view movies and interactive TV.
- Ideal for large installations.
- Supports auxiliary inputs for baby room or front door cameras and whole house VCR/DVD movie distribution.
- 11 or 16 dB forward signal boost provides crisp, clear TV picture.
- 15 or 16 dB Reverse path amplification helps overcome distribution signal loss.
- Provides signal amplification for incoming cable TV, antenna and auxiliary video signals.
- Advanced MMIC amplifier provides greater reliability than traditional amplifiers.

RELATED PRODUCTS



12-PORT VIDEO
INTERFACE
MODULE
364596-01



RF COAX
CONDITIONING
MODULE
364679-01



RF COAX SURGE
PROTECTOR
364680-01

VIDEO ENGINE & ACCESSORIES

PART #	DESCRIPTION
364219-01	Video Engine (11 dB forward/15 dB reverse)
364523-01	Video Engine Module, 16 dB (16 dB forward/16 dB reverse)
364271-03	Video Power Transformer, RPA
364596-01	12-Port Video Interface Module
364679-01	RF Coax Conditioning Module
364680-01	RF Coax Surge Protector

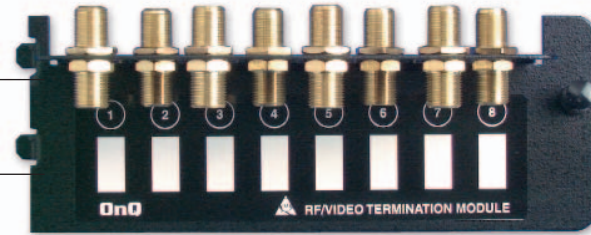
TECHNICAL SPECIFICATIONS

	Video Engine (364219-01)	Video Engine Module 16 dB (364523-01)
BANDWIDTH		
Forward	54-1000 MHz	54-1000 MHz
Reverse	5-42 MHz	5-42 MHz
GAIN		
Forward	11 dB	16 dB
Reverse	15 dB	16 dB
INSERTION LOSS		
Aux - Out	-5 dB	-5 dB
Aux - In	-40 dB	-70 dB
NOISE FIGURE	2 dB TYP	2 dB TYP
INPUT RETURN LOSS	-16 dB	-11 dB

8-PORT VIDEO INTERFACE MODULE

Supports up to eight video connection points.
3"H x 6.5"W.

Gold-plated high-performance 2 GHz F feed-throughs on Video Interface support a wide variety of video services, including digital satellite.



363915-01

DIGITAL CABLE BYPASS KIT



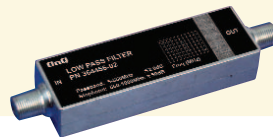
364557-01

Designed to bypass digital cable set-top boxes for video modulator applications. Hardware kit includes channels 2-4 notch filter (364456-01), two cable splitters and three cable assemblies.

RELATED PRODUCTS



VIDEO TILT
COMPENSATOR
364553-01



LOW PASS FILTER,
5-560 MHz
364456-02

VIDEO ACCESSORIES

PART #	DESCRIPTION
363915-01	8-Port Video Interface Module
364557-01	Digital Cable Bypass Kit
364553-01	Video Tilt Compensator
364456-02	Low Pass Filter, 5-560 MHz
364456-03	Low Pass Filter, 5-750 MHz
364456-01	Notch Filter, Channels 2-4
364459-01	3 dB Attenuator, With DC Block
364459-02	6 dB Attenuator, With DC Block
364530-01	DC Block
364484-01	DBS High-Performance F Upgrade Kit
364484-02	CEBus® Upgrade Kit
364458-01	Digital Modulator
364457-01	Digital Modulator Bracket (order only for 364458-01)

Pass & Seymour



On-Q/Legrand® Home Systems lyriQ™ Audio System

The On-Q lyriQ™ Audio System seamlessly integrates both aesthetically and technically with our award-winning Intercoms and Speakers. Stylish, new Keypad Volume Controls have infrared sensors that allow homeowners to operate all keypads in the system from one keypad location. On-Q designed new keypads with built-in amplifiers to provide excellent power, fidelity and control to the speakers.



4-ROOM AUDIO KITS



F7400-WH (White)

Cat 5 technology provides amplification at the volume control in each room. This means one low-cost cable reduces installation time while producing superior sound quality.

Keypad volume controls communicate with each other via their own dedicated bus to facilitate features such as whole house control.



F7395-WH (White)

Stylish modern look that nicely complements the Category 5 Intercom System.

Transmits audio, power and infrared data via one Cat 5 cable and distributes it throughout the home.

Simplistic volume controls with a sleeker design and smooth radial turn.

RELATED PRODUCTS



CATEGORY 5 INTERCOM
INDOOR/ROOM UNIT
F7637-WH (WHITE)



AUDIO INTERRUPT
MODULE
ICAIV2X



evōQ™ 3000 SERIES
SPEAKERS
364654-02
(Also see Page O-53)

4-ROOM AUDIO KITS

PART #	DESCRIPTION	QUANTITY
F7400-WH (White)	Single Source, Four-Zone Kit with Keypads, White	
	Single Source Four-Zone Distribution Module	1
	Single Source Input	1
	Local Source Input	1
	Amplified Keypad Volume Control, With IR	4
	Universal Remote	1
	Dual IR Mouse Emitter	1
	Power Supply, 24 Volt, 2.5 A	1
	Wall Plates	5
F7395-WH (White)	Single Source Four-Zone Kit with Knobs, White	
	Single Source Four-Zone Distribution Module	1
	Main Single Source Input	1
	Local Source Input	1
	Amplified Knob Volume Control, With IR	4
	Dual IR Mouse Emitter	1
	Power Supply, 24 Volt, 2.5 A	1
	Wall Plates	5
F7637-WH	Category 5 Intercom Indoor/Room Unit (White)	
ICAIV2X	Audio Interrupt Module	
364654-02	evōQ™ 3000 Series Speakers, In-Ceiling	

On-Q/Legrand® Home Systems lyriQ™ Audio System

Pass & Seymour



lyriQ™ AUDIO MODULE AND INPUTS

Converts line level audio and control (RCA connection) to Cat 5.

Three IR-emitter outputs and one IR target input allows for control of multi-media equipment stored in an entertainment center.



F7398

FEATURES

- Gold-plated RCA Jacks help ensure optimum audio performance.
- 38 KHz filter can be applied to emitter output 3 for devices that are sensitive to that frequency band.



Dedicated source selection up to four zones when used with multi-source system. Fixed to source 1 when used with single source system.

Adjustable backlight levels for increasing or decreasing illumination.

Infrared sensors allow easy remote control of volume level and whole house commands.

Built-in amplifier powers speakers.

RELATED PRODUCTS



LOCAL SOURCE INPUT
F7417-WH (WHITE)



AMPLIFIED KNOB
VOLUME CONTROL
WITH IR
F7399-WH (WHITE)



DUAL IR MOUSE
EMITTER
F7425

lyriQ™ AUDIO MODULE AND INPUTS

PART #	DESCRIPTION
F7396	Single Source, Four-Zone Distribution Module
F7430 COMING SOON!	Four Source, Eight-Zone Distribution Module
F7398	Single Source Input
F7428 COMING SOON!	Triple-Source Input
F7417-WH (White)	Local Source Input
F7417-IV (Ivory)	Local Source Input
F7417-LA (Lt. Almond)	Local Source Input
F7425	Dual IR Mouse Emitter
F7426	Universal IR Target

lyriQ™ AMPLIFIED VOLUME CONTROLS

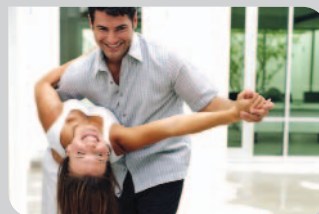
PART #	DESCRIPTION
F7394-WH (White)	Amplified Keypad Volume Control With IR
F7394-IV (Ivory)	Amplified Keypad Volume Control With IR
F7394-LA (Lt. Almond)	Amplified Keypad Volume Control with IR
F7399-WH (White)	Amplified Knob Volume Control With IR
F7399-IV (Ivory)	Amplified Knob Volume Control With IR
F7399-LA (Lt. Almond)	Amplified Knob Volume Control With IR

Pass & Seymour



On-Q/Legrand® Home Systems Speakers & Audio Accessories

The On-Q Universal Remote Control introduces an innovative feature called Whole House Commands. Whole House Commands control all the keypads in the system from any keypad location. You can mute, turn on/off, change source and raise or lower volume for all the keypads without leaving the room. Imagine setting the music source for a party from one location and adjusting the volume to that perfect level. When the party is over, simply point the remote at the keypad to turn off all the volume controls in the home. Whole house commands, and single room commands, add the simplicity that has been missing from multi-room audio systems.



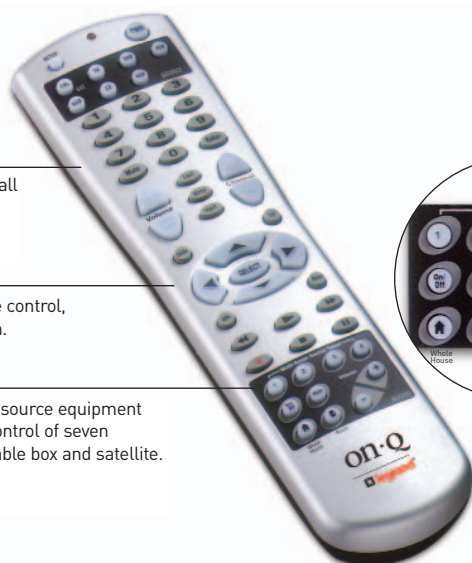
UNIVERSAL REMOTE CONTROL

ON-Q
EXCLUSIVE!

Whole house commands control all keypads at the same time from anywhere in the home.

Room commands feature volume control, mute, on/off and source selection.

Able to learn IR commands from source equipment remote controls. Plus provides control of seven consumer devices such as CD, cable box and satellite.



F7427

FEATURES

- Rubberized back for a good grip.
- "Always on" lyriQ™ Audio System Control.
- 7 device universal remote to control the lyriQ™ Audio System and all your other gear.



RELATED PRODUCTS



HOME THEATER
CONNECTION
FRAMES
F7661-WH



UNIVERSAL IR
TARGET
F7426

- Allows control of multi-media equipment stored behind entertainment center's closed doors.
- Small target mounts discreetly outside of entertainment center using double-sided tape.

IR AND ACCESSORIES

PART #	DESCRIPTION
F7427	Universal IR Remote Control
F7651-IV (Ivory)	2-Binding Post Speaker Tap
F7651-LA (Lt. Almond)	2-Binding Post Speaker Tap
F7651-WH (White)	2-Binding Post Speaker Tap
F7652-IV (Ivory)	Audio Decorator Tap
F7652-LA (Lt. Almond)	Audio Decorator Tap
F7652-WH (White)	Audio Decorator Tap
F7661-WH (White)	Home Theater 2-Gang Decorator Tap
F7661-IV (Ivory)	Home Theater 2-Gang Decorator Tap
F7661-LA (Lt. Almond)	Home Theater 2-Gang Decorator Tap
F7425	Dual IR Mouse Emitter
F7426	Universal IR Target

On-Q/Legrand® Home Systems evōQ™ 7000 Series Speakers

Pass & Seymour



evōQ™ 7000 SERIES SPEAKERS

Top-of-the-line speaker series from On-Q designed to maximize the best in distributed audio and home theater installations.

High-power handling and adjustment capabilities ensure ultimate in home sound.



364667-01
In-Wall

364666-01
In-Ceiling

FEATURES

- Suitable for moisture rich environments.
- Sleek design blends with any décor as attractive white finish can be painted. Mounts flush into walls and ceilings.
- High-grade advanced crossover allows for optimal frequency distribution.
- Features glass fiber woofers and aluminum dome tweeters for excellent performance.
- Foam gaskets minimize vibration and provide air-tight seal.
- Fully adjustable treble output level with pivoting tweeter easily tailors the sound to any taste.
- Easy installation with self-centering screw heads and compatibility with On-Q Preconstruction Speaker Brackets.
- Attractive white finish with grill, included, can be painted to match any décor.

RELATED PRODUCTS



6.5" OUTDOOR SPEAKER
364670-04 (BLACK)



12" SUB-WOOFER
364671-01



HECC 7.1
BASIC
364676-03
(See Page O-55)

evōQ™ 7000 SERIES SPEAKERS

PART #	DESCRIPTION	FREQUENCY	EFFICIENCY	POWER RMS / PEAK	IMPEDANCE
364665-01	6.5" In-Ceiling Speaker	55 Hz-20 KHz	89 dB	100 W / 200 W	8 Ohm
364666-01	8" In-Ceiling Speaker	45 Hz-20 KHz	89 dB	125 W / 250 W	8 Ohm
364667-01	6.5" In-Wall Speaker	55 Hz-20 KHz	89 dB	100 W / 200 W	8 Ohm
364668-01	8" In-Wall Speaker	45 Hz-20 KHz	89 dB	125 W / 250 W	8 Ohm
364669-01	6.5" In-Ceiling Dual Voice Coil Stereo Speaker	55 Hz-20 KHz	89 dB	100 W / 200 W	8 Ohm
364670-02 (White)	6.5" Outdoor Speaker	55 Hz-20 KHz	89 dB	100 W / 200 W	8 Ohm
364670-04 (Black)	6.5" Outdoor Speaker	55 Hz-20 KHz	89 dB	100 W / 200 W	8 Ohm
364671-01	12" Sub-woofer	35 Hz-200 Hz	N/A	200 W Amplified	
364784-02 (White)	Replacement Grill, 6.5" Outdoor Speaker				
364784-04 (Black)	Replacement Grill, 6.5" Outdoor Speaker				

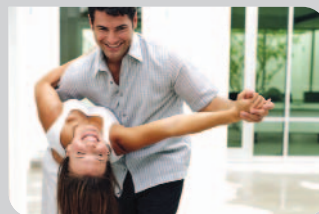
Pass & Seymour



On-Q/Legrand® Home Systems evōQ™ 5000 Series Speakers



The evōQ™ 5000 Series Speakers were carefully designed with precision matched components to create fantastic performance. As a result, our high-performance evōQ™ 5000 Series Speakers provide a full, crisp sound throughout the home — but at an affordable value. The speakers install flush into the wall or ceiling, blending into the surface barely noticed.



evōQ™ 5000 SERIES SPEAKERS

Designed specifically for superior performance in home theater applications, this speaker series can also serve as an upgrade to the evōQ™ 3000 Series Speakers to enhance a home's distributed audio.

Suitable for moisture rich environments.



364662-01
In-Wall

364660-01
In-Ceiling

FEATURES

- Feature poly woofers and UFLC soft dome tweeters to provide excellent power capacity for a strong, smooth deep sound.
- Foam gaskets minimize vibration and provide airtight seal.
- Easy installation with self-centering screw heads and compatibility with On-Q Pre-Construction Speaker Brackets.
- Attractive white finish with grill, included, can be painted to match any décor.

RELATED PRODUCTS



10" 150 WATT AMPLIFIED,
SUB-WOOFER
364664-01



6.5" IN-CEILING
PRE-CONSTRUCTION
SPEAKER BRACKET
364672-02

evōQ™ 5000 SERIES SPEAKERS

PART #	DESCRIPTION	FREQUENCY	EFFICIENCY	POWER RMS / PEAK	IMPEDANCE
364660-01	6.5" In-Ceiling	60 Hz-20 KHz	90 dB	75 W / 150 W	8 Ohm
364661-01	8" In-Ceiling	50 Hz-20 KHz	90 dB	100 W / 200 W	8 Ohm
364662-01	6.5" In-Wall	60 Hz-20 KHz	90 dB	75 W / 150 W	8 Ohm
364663-01	8" In-Wall	50 Hz-20K Hz	90 dB	100 W / 200 W	8 Ohm
364664-01	10" Sub-woofer	30 Hz-200 Hz	N/A	150 W Amplified	8 Ohm
364672-02	6.5" In-Ceiling Pre-Construction Speaker Bracket				
364673-02	8" In-Ceiling Pre-Construction Speaker Bracket				
364674-02	6.5" In-Wall Pre-Construction Speaker Bracket				
364675-02	8" In-Wall Pre-Construction Speaker Bracket				

On-Q/Legrand® Home Systems evōQ™ 3000 Series Speakers

Pass & Seymour



evōQ™ 3000 SERIES SPEAKERS

Exceptional value for affordable whole house audio distribution.

Affordable high-efficiency speakers with low distortion provide a crisp, clear full sound.



364656-02
In-Wall

364654-02
In-Ceiling

FEATURES

- Feature mica fiber woofers, PEI mylar tweeters.
- Foam gaskets minimize vibration and provide air-tight seal.
- Easy installation with self-centering screw heads and compatibility with On-Q Pre-Construction Speaker Brackets.
- Excellent sound quality at low and high volumes.
- Suitable for moisture rich environments.
- Single stereo model perfect for smaller rooms when only one speaker is needed.
- Attractive white finish with grill, included, can be painted to match any décor.

RELATED PRODUCTS



6.5" IN-CEILING DUAL
VOICE COIL STEREO
SPEAKER
364658-01



5.25" OUTDOOR
SPEAKER
364659-04 (BLACK)



6.5" IN-CEILING
PRE-CONSTRUCTION
SPEAKER BRACKET
364672-02

evōQ™ 3000 SERIES SPEAKERS

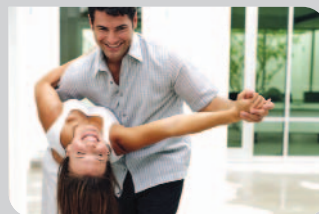
PART #	DESCRIPTION	FREQUENCY	EFFICIENCY	POWER RMS/PEAK	IMPEDANCE
364654-02	6.5" In-Ceiling Speaker (pair)	60 Hz-20 KHz	91 dB	50 W / 100 W	8 Ohm
364655-02	8" In-Ceiling Speaker (pair)	50 Hz-20 KHz	91 dB	75 W / 150 W	8 Ohm
364656-02	6.5" In-Wall Speaker (pair)	60 Hz-20 KHz	91 dB	50 W / 100 W	8 Ohm
364657-02	8" In-Wall Speaker (pair)	50 Hz-20 KHz	91 dB	75 W / 150 W	8 Ohm
364658-01	6.5" In-Ceiling Dual Voice Coil Stereo Speaker	60 Hz-20 KHz	91 dB	50 W / 100 W	8 Ohm
364659-02 (White)	5.25" Outdoor Speaker (pair)	60 Hz-20 KHz	90 dB	50 W / 100 W	8 Ohm
364659-04 (Black)	5.25" Outdoor Speaker (pair)	60 Hz-20 KHz	90 dB	50 W / 100 W	8 Ohm
364783-02	Replacement Grill, 5.25" Outdoor Speaker, White				
364783-04	Replacement Grill, 5.25" Outdoor Speaker, Black				

Pass & Seymour



On-Q/Legrand® Home Systems evōQ™ 1000 Series Speakers

evōQ™ 1000 Series Speakers bring whole-house audio distribution to a price point that any buyer can afford — without sacrificing quality sound. In fact, these speakers rank among the highest in value in their price range on today's market. Sold in pairs, the high-efficiency speakers install in a snap by utilizing self-centering screw heads and can be used with On-Q Pre-Construction Brackets.



evōQ™ 1000 SERIES, 6.5" IN-WALL AND IN-CEILING SPEAKER

Feature poly fiber woofers, PEI mylar tweeters and foam gaskets to minimize vibration and provide air-tight seal.

Frequency response is 60 Hz to 20 KHz. RMS power is 50 W, with peak power handling reaching 100 W.

- Attractive white finish with grill, included, can be painted to match any décor.



364765-02
In-Wall



364764-02
In-Ceiling

Suitable for moisture rich environments.

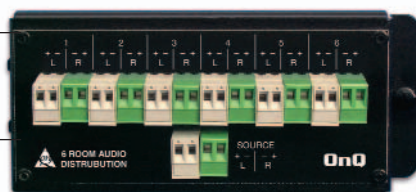
evōQ™ 1000 SERIES SPEAKERS

PART #	DESCRIPTION	FREQUENCY	EFFICIENCY	POWER RMS / PEAK	IMPEDANCE	TWEETER	WOOFER
364765-02	6.5" In-Wall Speaker (pair)	60 Hz to 20 Hz	90 dB	50 W / 100 W	8 Ohms	0.75" Mylar	6.5" Poly
364764-02	6.5" In-Ceiling Speaker (pair)	60 Hz to 20 Hz	90 dB	50 W / 100 W	8 Ohms	0.75" Mylar	6.5" Poly

IMPEDANCE AUDIO DISTRIBUTION

Provides color-coded connections for up to six sets of speakers with impedance.

Features removable connectors for easy wire termination.



364454-01



364769-01

- 75 W RMS volume control runs impedance matching through jumpers on the back.
- Allows sets of speakers (2x 4x 8x) to be added without loss of volume control.

ON-Q AUDIO DISTRIBUTION

PART #	DESCRIPTION	PART #	DESCRIPTION
364454-01	6 Room Audio Module	364769-01 (White)	Speaker/Impedance Matching Volume Control
364741-01 (White)	4-Zone Audio Distribution Outlet	364769-02 (Almond)	Speaker/Impedance Matching Volume Control
364741-02 (Almond)	4-Zone Audio Distribution Outlet	364769-03 (Ivory)	Speaker/Impedance Matching Volume Control
364741-03 (Ivory)	4-Zone Audio Distribution Outlet	364520-01 (White)	Impedance Matching Volume Control
		364520-03 (Ivory)	Impedance Matching Volume Control

On-Q/Legrand® Home Systems Home Entertainment Connection Centers (HECC™)

Pass & Seymour



HOME ENTERTAINMENT CONNECTION CENTERS

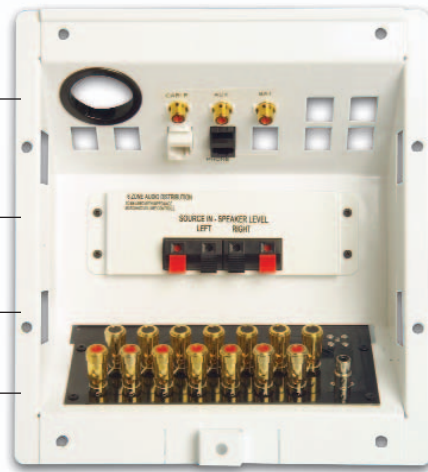


Features connections for CATV, digital satellite and auxiliary video input; and telecom connections for data and telephone.

Speaker connections for complete 5.1, 6.1 or 7.1 surround sound home theater systems.

Telecom connections for data and telephone.

Video connections for CATV, digital satellite and auxiliary video input devices.



364676-02

Accepts inserts for many other applications.

FEATURES

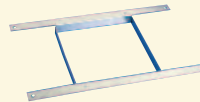
- Connections for front, side, rear and center speakers and sub woofers.
- Rugged metal pre-wire bracket mounts on standard 16" on-center studs.
- Features an installer side and a user side that require no tools.
- Provides four openings for On-Q AnyPort Outlet inserts for custom applications.
- White, ready-to-use cover (that can also be painted to fit any décor) allows wires to pass through while concealing all unsightly connections.

RELATED PRODUCTS



HECC 7.1, BASIC

364676-03



HECC ROUGH-IN
BRACKET

364581-01

HOME ENTERTAINMENT CONNECTION CENTERS, 6-ROOM AUDIO

PART #	DESCRIPTION
364676-02	HECC 7.1, 6-Room Audio New Construction
364676-05	HECC 7.1, 6-Room Audio Retrofit

HOME ENTERTAINMENT CONNECTION CENTERS, BASIC

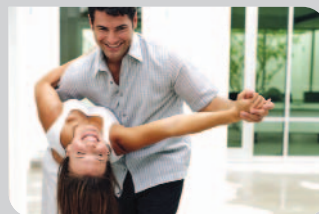
PART #	DESCRIPTION
364676-03	HECC 7.1, Basic New Construction
364676-06	HECC 7.1, Basic Retrofit
364581-01	HECC Rough-In Bracket
364761-01	6-Room Audio Module for HECC 7.1
364886-01	lyriQ™ Source Input Mounting Plate
364856-01	Replacement HECC Retrofit Clip Kit (Pair)

Pass & Seymour



On-Q/Legrand® Home Systems Home Speakers

Designed to be efficient with multi-room audio systems, our award-winning speakers offer exceptional sound quality at a great value. Components of each of our four speaker lines have been precision matched to create optimal sound in a wide range of environments — and for a wide range of audio needs. Use this easy-to-reference chart to spec any project's speaker configuration, from small and simple to complex home theater systems.



Description	Part Number	Sold As	Suitable for Moisture	Efficiency	Power (RMS/Peak)	Frequency Response
evōQ™ 7000 Series Speakers						
6.5" In-Ceiling	364665-01	Each	x	89 dB	100 W / 200 W	55-20 K
8" In-Ceiling	364666-01	Each	x	89 dB	125 W / 250 W	45-20 K
6.5" In-Wall	364667-01	Each	x	89 dB	100 W / 200 W	55-20 K
8" In-Wall	364668-01	Each	x	89 dB	125 W / 250 W	45-20 K
6.5" Dual Voice Coil In-Ceiling Stereo	364669-01	Each	x	89 dB	100 W / 200 W	55-20 K
6.5" Outdoor White	364670-02	Pair	x	89 dB	100 W / 200 W	55-20 K
6.5" Outdoor Black	364670-04	Pair	x	89 dB	100 W / 200 W	55-20 K
12" 200 W Sub-Woofer	364671-01	Each	NO	powered	200 W RMS	30-200 Hz
evōQ™ 5000 Series Speakers						
6.5" In-Ceiling	364660-01	Each	x	90 dB	75 W / 150 W	60-20 K
8" In-Ceiling	364661-01	Each	x	90 dB	100 W / 200 W	50-20 K
6.5" In-Wall	364662-01	Each	x	90 dB	75 W / 150 W	60-20 K
8" In-Wall	364663-01	Each	x	90 dB	100 W / 200 W	50-20 K
10" 150 W Sub-Woofer	364664-01	Each	NO	powered	150 W RMS	35-200 Hz
evōQ™ 3000 Series Speakers						
6.5" In-Ceiling	364654-02	Pair	x	91 dB	50 W / 100 W	60-20 K
8" In-Ceiling	364655-02	Pair	x	91 dB	75 W / 150 W	50-20 K
6.5" In-Wall	364656-02	Pair	x	91 dB	50 W / 100 W	60-20 K
8" In-Wall	364657-02	Pair	x	91 dB	75 W / 150 W	50-20 K
6.5" Dual Voice Coil In-Ceiling Stereo	364658-01	Each	x	91 dB	50 W / 100 W	60-20 K
5.25" Outdoor White	364659-02	Pair	x	90 dB	50 W / 100 W	65-20 K
5.25" Outdoor Black	364659-04	Pair	x	90 dB	50 W / 100 W	65-20 K
evōQ™ 1000 Series Speakers						
6.5" In-Ceiling	364764-02	Pair	x	90 dB	50 W / 100 W	60-20 K
6.5" In-Wall	364765-02	Pair	x	90 dB	50 W / 100 W	60-20 K

On-Q/Legrand® Home Systems Home Speakers

Pass & Seymour



On-Q/Legrand® Home Systems

Home Speakers

Woofer Type	Tweeter Type	Preconstruction Bracket Part Number	Replacement Grill Part Number	Drywall Hole Size	Overall Speaker Size WxH	Speaker Depth
Glass Fiber	1" Alum. Adj.	364672-02	364690-01	7.75" dia.	9" dia.	3.29"
Glass Fiber	1" Alum. Adj.	364673-02	364691-01	9.5" dia.	10.9" dia.	3.65"
Glass Fiber	1" Alum. Adj.	364674-02	364692-01	7.5"x10.75"	9.02"x12.31"	3.16"
Glass Fiber	1" Alum. Adj.	364675-02	364693-01	8.75"x12.75"	10"x14.25"	3.65"
Glass Fiber	1" Alum. Adj.	364672-02	364690-01	7.75" dia.	9" dia.	3.29"
Glass Fiber	1" Alum. Adj.	N/A	364784-02	N/A	8.25"x12.5"	8.25"
Glass Fiber	1" Alum. Adj.	N/A	364784-04	N/A	8.25"x12.5"	8.25"
Glass Fiber	N/A	N/A	N/A	N/A	16.5"x20"	16.5"
Poly	1" UFLC Dome	364672-02	364690-01	7.75" dia.	9" dia.	3.29"
Poly	1" UFLC Dome	364673-02	364691-01	9.5" dia.	10.9" dia.	3.65"
Poly	1" UFLC Dome	364674-02	364692-01	7.5"x10.75"	9.02"x12.31"	3.16"
Poly	1" UFLC Dome	364675-02	364693-01	8.75"x12.75"	10"x14.25"	3.65"
Poly	N/A	N/A	N/A	N/A	14.5"x16"	16.5"
Mica Fiber	1" PEI Mylar	364672-02	364690-01	7.75" dia.	9" dia.	3.29"
Mica Fiber	1" PEI Mylar	364673-02	364691-01	9.5" dia.	10.9" dia.	3.65"
Mica Fiber	1" PEI Mylar	364674-02	364692-01	7.5"x10.75"	9.02"x12.31"	3.16"
Mica Fiber	1" PEI Mylar	364675-02	364693-01	8.75"x12.75"	10"x14.25"	3.65"
Mica Fiber	1" PEI Mylar	364672-02	364690-01	7.75" dia.	9" dia.	3.29"
Poly	1" PEI Mylar	N/A	364783-02	N/A	6.3"x9.45"	6.61"
Poly	1" PEI Mylar	N/A	364783-04	N/A	6.3"x9.45"	6.61"
Poly	Mylar	364672-02	364690-01	7.75" dia.	9.02"x12.31"	3.5"
Poly	Mylar	364672-02	364692-01	7.5"x10.75"	9" dia.	3.5"

Pass & Seymour



On-Q/Legrand® Home Systems Communications



Imagine calling the family to dinner with the touch of a finger. From stylish intercoms to easy Internet access, On-Q Communications products provide the features your customers need to keep their families and home businesses communicating efficiently. Help your customers get connected.

Combo Modules	O-60, O-61	Telecom Conditioning Units & Accessories	O-67
Combo Kits	O-62	Wireless Access Point	O-68
Apartment Kits	O-63	Networking Modules	O-69
Telecom Modules	O-64 – O-66	Intercom System	O-70 – O-73

Pass & Seymour



On-Q/Legrand® Home Systems Home Combo Modules

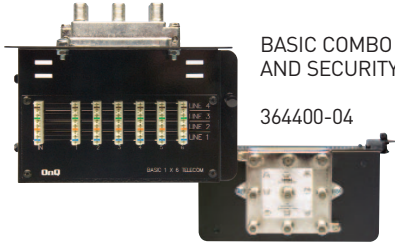
Distribute telecom and video using one space-saving On-Q Combination Module. We offer several variations of our Combination Modules to suit the different needs of many home buyers. For example, you can distribute telecom to six outlets and video to four TV outlets, or for larger homes, use the 9x6 Basic Combo Module to distribute telecom to nine outlets and video to six TV outlets. Many of the Combo Modules even provide support for security systems.



Part Number	Description	Telecom Outlets	Video Outlets	Video Amplifier
Basic Combination Modules				
364400-04	Basic 6x4 Combination Module	6	4	N
364400-11	Basic 6x6 Combination Module	6	6	N
364400-21	Basic 6x8 Combination Module	6	8	N
364400-14	Basic 6x4 Combination Module, 2 GHz	6	4	N
364400-15	Basic 6x6 Combination Module, 2 GHz	6	6	N
364400-16	Basic 6x8 Combination Module, 2 GHz	6	8	N
364400-22	Basic 9x4 Combination Module, RJ-31X	9	4	N
364400-05	Basic 9x6 Combination Module, RJ-31X	9	6	N
364400-19	Basic 9x8 Combination Module, RJ-31X	9	8	N
364725-02	Basic 9x8 Combination Module, RJ-31X, Amplified	9	8	Y
364400-20	Basic 11x4 Combination Module	11	4	N
364400-06	Basic 11x6 Combination Module	11	6	N
364400-10	Basic 11x8 Combination Module	11	8	N
364400-17	Basic 11x8 Combination Module, 2 GHz	11	8	N
364725-03	Basic 11x8 Combination Module, Amplified	11	8	Y
Advanced Combination Modules				
364400-07	Advanced 6x4 Combination Module	6	4	N
364400-08	Advanced 6x8 Combination Module, Dual Video	6	8	N
364400-09	Advanced 6x6 Combination Module	6	6	N
364400-12	Advanced 6x8 Combination Module	6	8	N
364725-01	Advanced 6x8 Combination Module, Amplified	6	8	Y
Enhanced Combination Modules				
364400-13	Enhanced 8x8 Combination Module, RJ31X	8	8	N
364725-04	Enhanced 8x8 Combination Module, RJ31X, Amplified	8	8	Y
364400-18	Enhanced 12x8 Combination Module	12	8	N
364725-05	Enhanced 12x8 Combination Module, Amplified	12	8	Y

On-Q/Legrand® Home Systems Home Combo Modules

Pass & Seymour



BASIC COMBO MODULES
AND SECURITY

364400-04

FEATURES

- Supports four-line telecom service distribution and video service distribution to room outlets.
- Amplified models provide a boost to the video signal for crisp and clear TV reception in larger installations.
- Security models provide a security system interface for line seizure in the event of an emergency.
- Enhanced models feature convenient RJ45 plug connections for easy reconfiguration of services and testing of individual cable runs.
- Compact design provides maximum space for system modules.

Video Rating	Telecom Connections	RJ-31X Security	Surge	Bridge Expansion	Dimensions H"xW"
1 GHz	110 Punchdown	N	N	N	5 1/8 x 6 1/2
1 GHz	110 Punchdown	N	N	N	5 1/8 x 6 1/2
1 GHz	110 Punchdown	N	N	N	5 1/8 x 6 1/2
2 GHz	110 Punchdown	N	N	N	5 1/8 x 6 1/2
2 GHz	110 Punchdown	N	N	N	5 1/8 x 6 1/2
2 GHz	110 Punchdown	N	N	N	5 1/8 x 6 1/2
1 GHz	110 Punchdown	Y	N	N	5 1/8 x 6 1/2
1 GHz	110 Punchdown	Y	N	N	5 1/8 x 6 1/2
1 GHz	110 Punchdown	Y	N	N	5 1/8 x 6 1/2
1 GHz	110 Punchdown	Y	N	N	5 1/8 x 6 1/2
1 GHz	110 Punchdown	N	N	N	5 1/8 x 6 1/2
1 GHz	110 Punchdown	N	N	N	5 1/8 x 6 1/2
1 GHz	110 Punchdown	N	N	N	5 1/8 x 6 1/2
2 GHz	110 Punchdown	N	N	N	5 1/8 x 6 1/2
1 GHz	110 Punchdown	N	N	N	5 1/8 x 6 1/2
1 GHz	110 Punchdown	Y	Y	Y	5 1/8 x 6 1/2
1 GHz	110 Punchdown	Y	Y	Y	5 1/8 x 6 1/2
1 GHz	110 Punchdown	Y	Y	Y	5 1/8 x 6 1/2
1 GHz	110 Punchdown	Y	Y	Y	5 1/8 x 6 1/2
1 GHz	110 Punchdown	Y	Y	Y	5 1/8 x 6 1/2
1 GHz	RJ45 Connection	Y	N	N	5 1/8 x 6 1/2
1 GHz	RJ45 Connection	Y	N	N	5 1/8 x 6 1/2
1 GHz	RJ45 Connection	N	N	N	5 1/8 x 6 1/2
1 GHz	RJ45 Connection	N	N	N	5 1/8 x 6 1/2

On-Q/Legrand® Home Systems Combo Kits

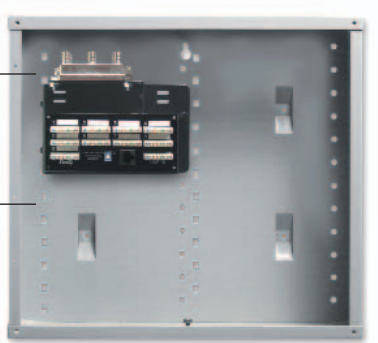
On-Q has conveniently packaged the core components you need to layout the basic infrastructure of any connected home project. Our cost-effective Combo Kits include a 12" enclosure and one of a variety of combination telecom/video modules to get your project started. Then, use the kit's 18" of unused rail space to build a complete home system with additional On-Q modules.



9X6 BASIC VALUE COMBO KIT, SECURITY

Security system interface enables line seizure in the event of an emergency.

Enclosure features 18" of unused rail space for additional system modules.

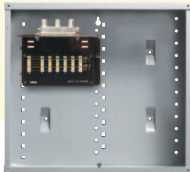


364495-02

FEATURES

- Kit includes a 12" Enclosure and a 9x6 Basic Combination Module [364400-05] allowing distribution of up to nine telecom outlets with up to four lines each and incoming video signals to up to six television outlets.
- Supports most security systems through a DIP switch and RJ45 jack.

RELATED PRODUCTS



6X4 BASIC VALUE
COMBO KIT

364495-01



8X8 ENHANCED VALUE
COMBO KIT, SECURITY

364495-06

COMBO KITS

PART #	DESCRIPTION
364495-01	6x4 Basic Value Combo Kit
364495-02	9x6 Basic Value Combo Kit, Security
364495-07	9x8 Basic Value Combo Kit, Security, Amplified
364495-05	6x6 Advanced Value Combo Kit
364495-06	8x8 Enhanced Value Combo Kit, Security
364495-08	8x8 Advanced Value Combo Kit, Security, Amplified
364495-09	12x8 Enhanced Value Combo Kit, Amplified

PREMIUM APARTMENT KITS

Complete kit includes enclosure, modules and outlets.

Features a hinged, locking door for tamper resistance.

Available in one, two or three bedroom configurations.



FEATURES

- Includes multimedia outlets, telecom, video and enclosure in one package.
- Expandable design supports additional On-Q application modules.
- Premium apartment kits feature hinged enclosure with a tamper-resistant, locking door.
- EIA/TIA 570A Grade One and Grade Two compliant.

PREMIUM APARTMENT KITS

PART #	DESCRIPTION	QUANTITY
364345-01-M1	One-Bedroom Kit	
	14" Enclosure	1
	1x6 Basic Telecom Module	1
	1x6 Passive Video Module, DBS, 1 GHz	1
	5-Port Network Interface	1
	4-Opening ValuePort Wall Plate, White	5
	AnyPort RJ45 Jack Insert, White	5
	AnyPort RJ45 Jack Insert, Keyed, White	5
	AnyPort F-Insert, White	10
364345-02-M1	Two-Bedroom Kit	
	14" Enclosure	1
	1x12 Basic Telecom Module	1
	1x8 Passive Video Module, DBS, 1 GHz	1
	5-Port Network Interface	1
	4-Opening ValuePort Wall Plate, White	7
	AnyPort RJ45 Jack Insert, White	7
	AnyPort RJ45 Jack Insert, Keyed, White	7
	AnyPort F-Insert, White	14
364345-03-M1	Three-Bedroom Kit	
	28" Enclosure	1
	1x12 Basic Telecom Module	1
	1x8 Passive Video Module, DBS, 1 GHz	1
	8-Port Network Interface	1
	4-Opening ValuePort Wall Plate, White	8
	AnyPort RJ45 Jack Insert, White	8
	AnyPort RJ45 Jack Insert, Keyed, White	8
	AnyPort F-Insert, White	16

VALUE APARTMENT KITS

PART #	DESCRIPTION	QUANTITY
364350-01-M1	One-Bedroom Kit	
	12" Enclosure	1
	1x6 Basic Telecom Module	1
	1x4 Passive Video Module, DBS, 1 GHz	1
	2-Opening ValuePort Wall Plate, White	3
	AnyPort RJ45 Jack Insert, White	3
	AnyPort F-Insert, White	3
364350-02-M1	Two-Bedroom Kit	
	12" Enclosure	1
	1x6 Basic Telecom Module	1
	1x4 Passive Video Module, DBS, 1 GHz	1
	2-Opening ValuePort Wall Plate, White	4
	AnyPort RJ45 Jack Insert, White	4
	AnyPort F-Insert, White	4
364350-03-M1	Three-Bedroom Kit	
	24" Enclosure	1
	1x6 Basic Telecom Module	1
	1x6 Passive Video Module, DBS, 1 GHz	1
	2-Opening ValuePort Wall Plate, White	5
	AnyPort RJ45 Jack Insert, White	5
	AnyPort F-Insert, White	5

Pass & Seymour



On-Q/Legrand® Home Systems Basic Telecom Modules

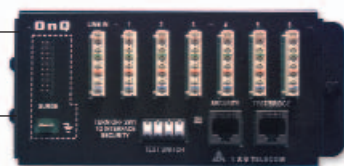
On-Q Basic Telecom Modules distribute telephone service and wide area network data service throughout the house. Modules have a high-quality eight position 110 punchdown connector for hooking up four lines of incoming service to up to 12 telephone outlets. They directly interface to most security systems, and modules include a spade terminal for optional surge protection.



1X6 BASIC TELECOM MODULE

Supports up to six telephone outlets, each with up to four lines.

Directly interfaces to most security systems.

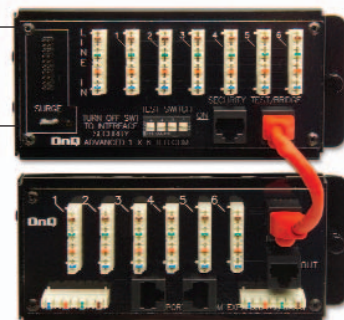


1267062-01

1X12 BASIC TELECOM MODULE

Supports up to 12 telephone outlets, each with up to four lines.

Also supports a high-speed Cat 5e connection to one data outlet for broadband data services.



363484-02

FEATURES

- Supports up to four incoming telephone lines and distributes up to six telephone outlets with available expansion for increased capacity.
- Features cable pair isolation and testing capability for hassle free installations.
- Easy, high quality cable termination on 110 style blocks.
- Add additional telephone outlets simply and inexpensively with the On-Q Telecom Expansion Module.
- Supports most security systems by providing RJ-31X functionality through a multi-function switch and RJ45 jack.
- Supports optional On-Q Telecom Surge Protection Unit.
- Half width design facilitates easy positioning in the On-Q Enclosure with other On-Q modules.
- High speed Cat 5e connection to a data outlet (1x12 and 1x11 KSU models only).

RELATED PRODUCTS



6-PORT TELECOM
EXPANSION MODULE

1267058-01



TELECOM SURGE
SUPPRESSION UNIT

363487-01

TELECOM MODULES

PART #	DESCRIPTION
1267062-01	1x6 Basic Telecom Module
363484-02	1x12 Basic Telecom Module
1267058-01	6-Port Telecom Expansion Module
364604-01	Anyline Telecom Module
363487-01	Telecom Surge Suppression Unit

On-Q/Legrand® Home Systems Enhanced Telecom Modules

Pass & Seymour



1X8 ENHANCED TELECOM MODULE

RJ45 modular plug design allows for easy system outlet reconfiguration between telecom and data services.

Supports up to eight phone outlets, each with up to four lines.



364551-01

FEATURES

- High-performance RJ45 telecom distribution jacks provide flexibility and convenience.
- Supports up to four incoming telephone lines.
- Supports most security systems by providing RJ-31X functionality.
- Enables cable run performance testing capability.
- Cost effectively add additional telephone outlets with Telecom Expansion Module.
- Supports an optional On-Q Telecom Surge Suppression Unit and/or the On-Q line of telecom conditioning units.

ANYLINE DATA MODULE

Distributes phone and data to four locations with two phone lines at each location.

Enables Ethernet and telephone to be transmitted over the same Cat 5 cable.



364770-01

FEATURES

- Surge option available to protect valuable computer equipment.
- Universal design accommodates a wide array of service provider equipment.
- Brackets easily install using tabs and locking push pins.
- Powder-coated heavy gauge steel.

RELATED PRODUCTS



HOME OFFICE MODULE

364415-01



8-PORT ENHANCED TELECOM
EXPANSION MODULE

364559-01

ENHANCED TELECOM MODULES

PART #	DESCRIPTION
364551-01	1x8 Enhanced Telecom Module
364603-01	1x16 Enhanced Telecom Module
364559-01	8-Port Enhanced Telecom Expansion Module
364415-01	Home Office Module
364770-01	AnyLine Data Module

Pass & Seymour



On-Q/Legrand® Home Systems Telephone Modules

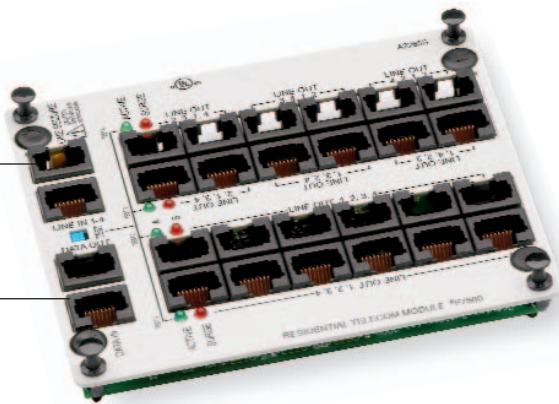
Our flexible family of Telephone Distribution Modules each offer different combinations of line pin-outs to more closely match homeowner needs. The modules' plug and connect design makes line reconfiguration simple, and they distribute four incoming telephone lines to as many as 24 locations. Telephone Modules also feature line seizure for Home Security System communication.



4X24 CONFIGURABLE TELEPHONE MODULE

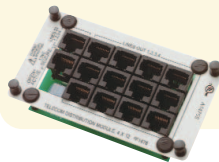
Supports up to four incoming telephone lines and 24 flexible telephone outlets, with the ability to easily assign or reassign any line to any outlet.

Data in and data out ports enable a separate, high-speed digital data service line.

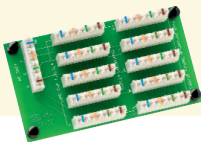


F7560

RELATED PRODUCTS



4X12 PLUG & CONNECT TELEPHONE MODULE
F1478



4X10 PUNCH DOWN TELEPHONE MODULE
F7553



1X11 KSU/PBX TELECOM MODULE
363485-01

TELEPHONE MODULES

PART #	DESCRIPTION	OUTPUT CONNECTION	RJ-31X
F7553	4x10 Punchdown Telephone Module	10	No
F7554	4x10 Punchdown Telephone Module with Line Seizure Port	10	Yes
F7556	4x8 Telephone Module	Line 1 is primary at 8 locations 8	Yes
F1478	4x12 Telephone Module	Line 1 is primary at 12 locations 12	Yes
F1475	4x12 Configurable Telephone Module	Line 1 is primary at 8 locations 12	Yes
F7560	4x24 Configurable Telephone Module	Line 1 is primary at 16 locations 24	Yes

KSU PHONE SYSTEM INTEGRATION

PART #	DESCRIPTION
FF5512-624	KSU Integration Kit for Panasonic KX-TD624, Partner I,II, ACS
F5512-1232	KSU Integration Kit for Panasonic KX-TD816
363490-01	KSU Interface Kit
364607-01	Replacement KSU Commoning Plug
363485-01	1x11 KSU/PBX Telecom Module

SECURITY INTERFACE CONDITIONING UNIT

Provides RJ-31X functionality for interface to security system.



364602-01

TELECOM SURGE CONDITIONING UNIT

Provides surge protection for connected telephone equipment in the home.

Designed to attach to the Telecom Service Conditioning Module [364599-01].

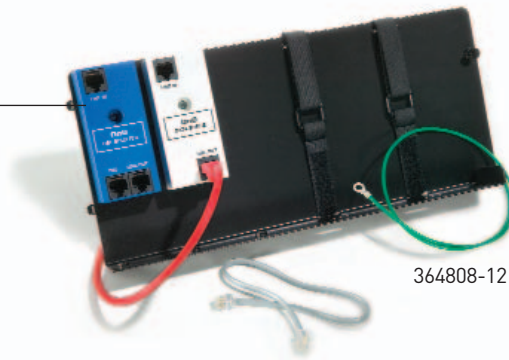


364600-01

ACCESSORIES

PART #	DESCRIPTION
364599-01	Telecom Service Conditioning Module
364600-01	Telecom Surge Conditioning Unit
364601-01	DSL Splitter Conditioning Unit
364602-01	Security Interface Conditioning Unit
363293-01	110 Punchdown Tool
363292-01	Cat 5 Strip and Fit Tool

Integrated whole house DSL splitter alleviates need for a dangle at every phone.



364808-12

FEATURES

- Surge option available to protect valuable computer equipment.
- Universal design accommodates a wide array of service provider equipment.
- Brackets easily install using tabs and locking push pins.
- Powder-coated heavy gauge steel.

MODEM MOUNTING PLATES

PART #	DESCRIPTION	COMPATIBILITY	SURGE
364808-01	Modem Mounting Plate, Cable, Data Surge	Cable	Yes
364808-02	Modem Mounting Plate, Cable, No Surge	Cable	No
364808-12	Modem Mounting Plate, DSL, Data Surge	DSL	Yes
364808-11	Modem Mounting Plate, DSL, No Surge	DSL	No

On-Q/Legrand® Home Systems Wireless Access Point

The first wireless access point specifically designed for residential use, the On-Q Wireless Access Point offers easy installation, an unobtrusive design, tetherless roaming and user-friendly operation. Its Power over Ethernet design requires only a single Cat 5e cable for both power and data, making installation simple.



WIRELESS ACCESS POINT (WAP)

Allows peer-to-peer communication with up to four other 802.11g wireless access points.

Supports three different modes of operation: Wireless Distribution System (WDS), Client Bridge and Ad-Hoc mode.

Security features included.



364711-01

FEATURES

- 10/100 Base-T Ethernet port to connect to a router or directly to a broadband modem (cable, DSL or other).
- Backward compatible with 802.11b devices.
- Supports data rates up to 54 Mbps.
- Wi-Fi Certified.
- Advanced encryption technologies provide state of the art security capabilities.
- Requirements: Microsoft® Internet Explorer® 5.02 or Netscape® Navigator 6.2 or higher for use of the Web browser.
- Each device on the wireless network requires an 802.11g or 802.11b wireless adapter (adapters sold separately).
- Broadband Internet access (cable, DSL or other) with Ethernet (RJ45) port.



WAP

PART #	DESCRIPTION
364711-01	Wireless Access Point
364723-01	Replacement Power Supply - Wireless Access Point
364719-01	Replacement Inserter - Wireless Access Point
364724-01	Replacement Dome - Wireless Access Point
364728-01	Wireless Access Point Pre-Construction Bracket Labor-saving pre-construction bracket designed for fine adjustability of WAP placement and for safe cable retention. Assists drywall in making accurate cutout clearances and in maintaining desired placement.

On-Q/Legrand® Home Systems Computer Networking Modules

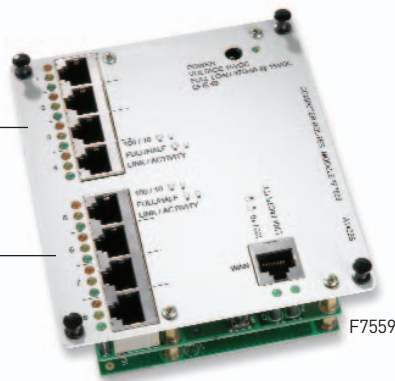
Pass & Seymour



ETHERNET ROUTER

Allows up to eight users to share Internet access with just one IP address (dynamic or static).

Provides enhanced firewall features for network protection.



FEATURES

- Provides connectivity for computers for a local area network (LAN).
- High-speed Cat 5e termination point for digital data services.
- RJ45 8-pin modular jacks provide for time-saving termination and hassle free connection changes.
- Router allows a single high-speed internet connection to be shared among several computers.

5-PORT NETWORK INTERFACE MODULE

Cat 5e rated module supports cost-effective connectivity for up to five networked computers via 110 style RJ45 modular jacks that snap-in from the rear.

5-Port Network Interface also supports termination points for On-Q Cat 5e telecommunications cable for direct interconnections to digital data services.

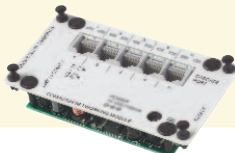


RELATED PRODUCTS



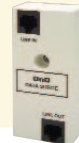
8-PORT NETWORK
INTERFACE MODULE

363486-01



5-PORT 10/100 BASE-T
ETHERNET SWITCH

F7565



DATA SURGE
CONDITIONING UNIT

364598-01

COMPUTER NETWORKING MODULES

PART #	DESCRIPTION	PORTS
F7565	5-Port 10/100 Base-T Ethernet Switch Module	5
F7562	Ethernet Router with 4-port 10/100 switch	4
F7559	Ethernet Router with 8-port 10/100 switch	8
F7592	6-Port Modular Patching Module with Cables	6
364407-01	5-Port Network Interface Module	5
363486-01	8-Port Network Interface Module	8
364780-01	5-Port 10/100 Ethernet Network Switch	5
364772-01	4-Port 10/100 Basic Router/Switch	4
364781-01	8-Port 10/100 Ethernet Network Switch	8
364598-01	Data Surge Conditioning Unit Protects equipment connected to pairs 1 and 2 of an Ethernet network from transient voltage.	

Pass & Seymour



On-Q/Legrand® Home Systems Category 5 Intercom System



INTERCOM FEATURES

- **CAT 5-BASED** Reduce the cost of installation through the use of Cat 5. No need to carry special intercom wire! Standard Cat 5 wire — from your choice of manufacturers — is all that you'll need. For quick and simple installation, all of the intercom stations feature convenient punch down blocks.
- **HOME RUNS FROM THE STRUCTURED WIRING PANEL** Why would you want to run separate intercom wires to a station in the kitchen? Improve your efficiency by running standard Cat 5 from each room to the structured wiring panel.
- **SLEEK, UPDATED LOOK** Looking for an intercom that doesn't look like it was made in the 70s? The intercom offers a modern design that trims with a standard decorator wall plate — perfect for any décor.



On-Q/Legrand® Home Systems Category 5 Intercom System

Pass & Seymour



On-Q/Legrand® Home Systems

CATEGORY 5 INTERCOM KIT



Broadcast system — talk from any unit to all others.

Interfaces with other subsystems, such as audio, for added features.

Separate microphone and high quality speaker deliver a clear, crisp sound.



LED status lights on main console show all room activity - mute, monitor or in-use.

F7602

CATEGORY 5 INTERCOM KIT

PART #	DESCRIPTION	QUANTITY
F7602-WH	Module and Main Console Unit (White)	1
	Room Unit (White)	3
	Door Unit (Shiny Brass)	1
	Door Chime	1
	Power Supply, 12 Volt, 1.5 A (Wall-Mount)	1
F7603-WH	Module and Main Console Unit (White)	1
	Room Unit (White)	3
	Door Unit (Antique Brass)	1
	Door Chime	1
	Power Supply, 12 Volt, 1.5 A (Wall-Mount)	1
F7602-LA	Module and Main Console Unit (Light Almond)	1
	Room Unit (Light Almond)	3
	Door Unit (Shiny Brass)	1
	Door Chime	1
	Power Supply, 12 Volt, 1.5 A (Wall-Mount)	1
F7603-LA	Module and Main Console Unit (Light Almond)	1
	Room Unit (Light Almond)	3
	Door Unit (Antique Brass)	1
	Door Chime	1
	Power Supply, 12 Volt, 1.5 A (Wall-Mount)	1

Pass & Seymour



On-Q/Legrand® Home Systems
Home Intercom Systems

On-Q/Legrand introduces the next generation of intercoms. Offering a sleek, modern look that fits in a standard decorator wall plate, On-Q Intercom Systems are an affordable option for every home because they are Cat 5-based. This also allows On-Q Intercoms to integrate seamlessly with other On-Q subsystems, such as our lyriQ™ Audio System.

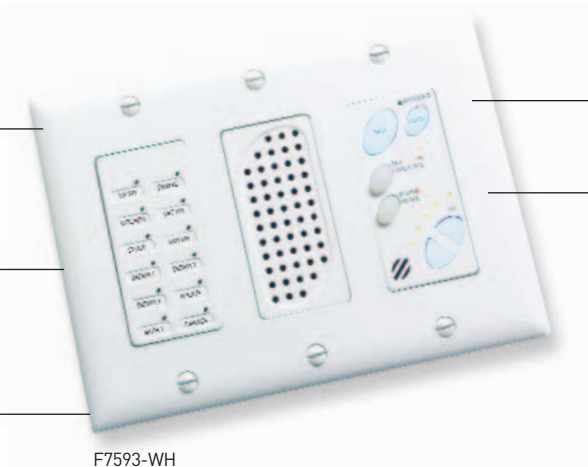


CATEGORY 5 INTERCOM SYSTEM MAIN CONSOLE

LED Lights show all room activity. Red indicates Mute. Orange indicates Monitor. Green indicates someone actively talking throughout the home.

Home runs from structured wiring panel. Improve your efficiency by running standard Cat 5 from the structured wiring panel to each room.

A separate microphone and a high quality speaker deliver crisp, clear sound that is integrated seamlessly in each intercom unit.



F7593-WH

Cat 5-based system reduces the cost of every intercom installation.

Trims with a standard decorator wall plate offering a modern design perfect for any décor (included).



RELATED PRODUCTS



CATEGORY 5 INTERCOM
MODULE & MAIN
CONSOLE UNIT
F7593-WH (WHITE)



CATEGORY 5 INTERCOM
INDOOR/ROOM UNIT
F7637-WH (WHITE)

CATEGORY 5 INTERCOM SYSTEMS

PART #	DESCRIPTION	GANG BOX (MAIN CONSOLE)	RUNS OF CAT 5 CABLE
F7593-WH (White)	Intercom Module & Main Console Unit	3	2
F7593-IV (Ivory)	Intercom Module & Main Console Unit	3	2
F7593-LA (Lt. Almond)	Intercom Module & Main Console Unit	3	2
F7637-WH (White)	Intercom Indoor/Room Unit	2	1
F7637-IV (Ivory)	Intercom Indoor/Room Unit	2	1
F7637-LA (Lt. Almond)	Intercom Indoor/Room Unit	2	1
F7725	12 Volt, 2.5 Amp Power Supply	N/A	N/A
F7726	12 Volt, 1.5 Amp Power Supply	N/A	N/A

On-Q/Legrand® Home Systems Home Intercom Systems

Pass & Seymour



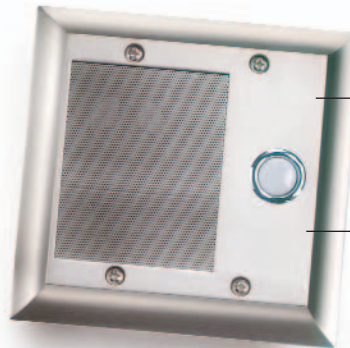
CATEGORY 5 INTERCOM DOOR COMPONENTS

Automatically mutes any music playing through the audio system when the intercom is engaged.

Automatic operation which restores audio to its previous volume after 10 seconds.



ICAIV2X

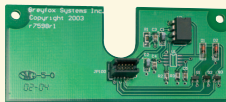


F7641-BS

Available in both classic and modern finishes that are guaranteed to increase the curb appeal of any home.

Back lit button allows for easy operation at night.

RELATED PRODUCTS



CATEGORY 5 INTERCOM DOOR CHIME

F7601



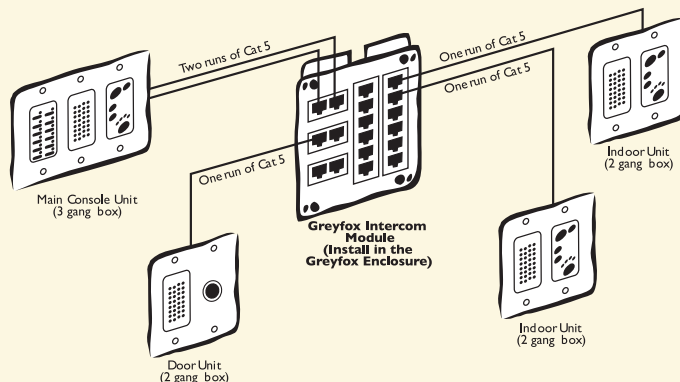
CATEGORY 5 INTERCOM OUTDOOR/PATIO UNIT

F7641-WH (WHITE)

CATEGORY 5 INTERCOM DOOR COMPONENTS

PART #	DESCRIPTION	GANG BOX	RUNS OF CAT 5 CABLE
F7596-WH (White)	Category 5 Intercom Door Unit, Weather-Resistant	2	1
F7596-SB (Shiny Brass)	Category 5 Intercom Door Unit, Weather-Resistant	2	1
F7596-AB (Antique Brass)	Category 5 Intercom Door Unit, Weather-Resistant	2	1
F7596-BS (Brushed Stainless)	Category 5 Intercom Door Unit, Weather-Resistant	2	1
F7601	Category 5 Door Chime (3-note chime)	N/A	N/A
F7521-WH (White)	Intercom Exterior Mounting Box, 2-gang	N/A	N/A
F7521-IV (Ivory)	Intercom Exterior Mounting Box, 2-gang	N/A	N/A
F7641-WH (White)	Intercom Outdoor/Patio Unit, Weather-Resistant	2	1
F7641-SB (Shiny Brass)	Intercom Outdoor/Patio Unit, Weather-Resistant	2	1
F7641-AB (Antique Brass)	Intercom Outdoor/Patio Unit, Weather-Resistant	2	1
F7641-BS (Brushed Stainless)	Intercom Outdoor/Patio Unit, Weather-Resistant	2	1
ICAIV2X	Category 5 Intercom Audio Interrupt Module	N/A	N/A

TIPS & TECHNOLOGY: CATEGORY 5 INTERCOM APPLICATION



Category 5 Intercom System

- Run a single Cat 5 cable to any location where a Room or Door Unit will be installed.
- Run two Cat 5 cables to the location where the Main Console Unit will be installed.
- Use the appropriate size gang box for the type of unit to be installed.
- All cabling needs to home run back to the Intercom Module which resides in the On-Q enclosure.

Pass & Seymour



On-Q/Legrand® Home Systems
Comfort



IMAGINE YOUR HOME RESPONDING TO YOUR NEEDS AND LIFESTYLE. With Home Comfort products from On-Q, the way your customers live in and around the home will change forever as they gain ultimate control over their lighting and environment. Introduce your customers to a new world of home comfort and control.

On-Q Lighting Controller	0-76	Category 5 Cameras	0-82 – 0-84
Advanced Lighting Control (ALC)	0-77 – 0-80	LCD Display	0-85
Power Line Carrier (PLC) Lighting Control	0-81	Home Management System	0-86 – 0-95

Pass & Seymour



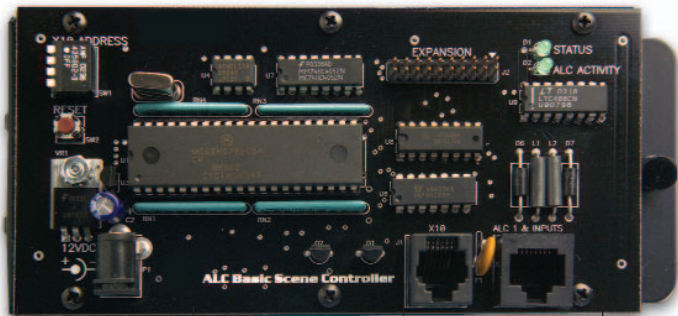
On-Q/Legrand® Home Systems Home Lighting Modules



The On-Q Lighting Controller is the heart of the On-Q Lighting System. The modular system design allows users to pay for only those features that are really needed. Its flexible interface and control features enable it to function as a stand-alone lighting system controller for convenience and security lighting applications.



LIGHTING CONTROLLER

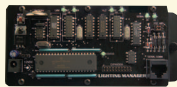


Provides up to 64 homeowner programmable lighting scenes.	X10 Port provides a simple interface to security lighting applications.	Expansion bus supports lighting control expansion to up to 124 ALC lighting control switches and I/O modules.	364644-01
			Control Port provides control of up to 31 ALC Lighting Control Switches and I/O modules.

FEATURES

- Enables programmable power and enhanced lighting control.
- Create lighting scenes for home theater or entertaining.
- Links multiple lights to one switch.
- Supports security lighting to give a "lived-in" look while away.
- Used to control light groups, AC outlets and appliances.
- Standard electrical wiring practices (NM Cable).
- UL Listed appliance controls.

RELATED PRODUCTS



LIGHTING MANAGER MODULE
364709-01



LIGHTING EXPANSION MODULE
364726-01



LIGHTING DISTRIBUTION MODULE
364645-01

HOME LIGHTING MODULES

PART #	DESCRIPTION
364644-01	Lighting Controller
364709-01	Lighting Manager Module
364678-01	Lighting Input/Output Module
364726-01	Lighting Expansion Module
364645-01	Lighting Distribution Module
364698-01	Lighting Serial Expansion Module
364630-01	Lighting SceneTech Software
364731-11	Convenience Lighting Solution Package Package contains: One On-Q Lighting Controller, one Lighting Manager, one Lighting Distribution Module, four ALC 600 W Dimmer Switches, two ALC Auxiliary Switches, one ALC Designer Scene Switch, one ALC Branch Hub, one RF Remote Control Combo, SceneTech Software and Lighting Guide CD

On-Q/Legrand® Home Systems Advanced Lighting Control Modules

Pass & Seymour

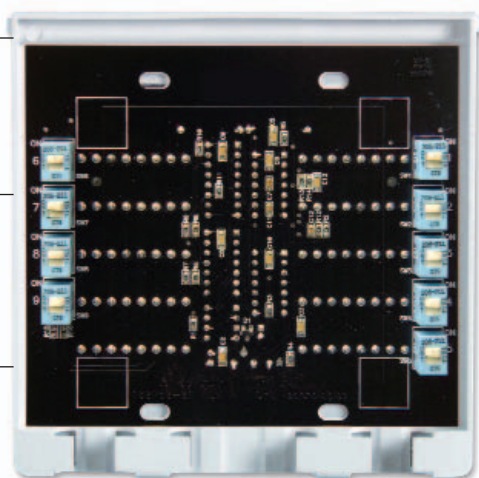


ALC ENHANCED BRANCH HUB

Boosts and conditions the ALC communication signal strength.

Extends ALC communication cabling distances up to an additional 1,000 feet (1,500 feet total).

Provides connection points for up to nine ALC Relay, Dimmer or Scene Switches.



364736-01

FEATURES

- Enables easy isolation of switches for troubleshooting.
- Conditions the signal strength for up to 31 ALC switches.
- Single Cat 5e cable supports power and communications.
- Provides connection points for ALC auxiliary switches for multi-way on/off and dimming control with ALC relay and dimmer switches.
- Housed in an On-Q Hide-A-Port outlet to provide easy access with a professional appearance.



White

Lt. Almond

Ivory

RELATED PRODUCTS



ALC BRANCH
INTERFACE
364396-01



MANAGED SCENE
LIGHTING COMBO
364747-01

ALC LIGHTING CONTROL MODULES

PART #	DESCRIPTION
364806-02	EZ-Scene ALC Lighting Interface, Four Branch
364806-01	EZ-Scene ALC Lighting Interface, One Branch
364396-01	ALC Branch Interface, Stand-Alone Unit
364396-02	ALC Branch Interface Module
364747-01	Managed Scene Lighting Combo
364677-01	ALC Branch Hub
364736-01 (White)	ALC Enhanced Branch Hub
364736-02 (Lt. Almond)	ALC Enhanced Branch Hub
364736-03 (Ivory)	ALC Enhanced Branch Hub
364695-01	ALC 600 V Lead Kit, 10 pack
364444-01	ALC BranchTech Software
364437-01	ALC Technician's Tool Kit
364820-01	ALC Scene Lighting Universal Remote Control

Pass & Seymour



On-Q/Legrand® Home Systems Advanced Lighting Control Switches

Operate groups of lights to create the perfect ambiance or feel more secure with our convenient, one-touch lighting controls. On-Q Advanced Lighting control switches and dimmers come in attractive decorator style wall plates in up to six colors to match any decor, and they can handle incandescent, halogen and conventional magnetic low voltage loads.



ALC DIMMER SWITCH

New LED allows homeowners to locate the switch in the dark.

Connects to a controller for programming lighting and lighting scenes.

Silent "no-click" on/off control.



364335-01



White



Lt. Almond



Almond



Ivory



Brown



Black

FEATURES

- Versatile dimming control of incandescent and magnetic low voltage lighting. Provides soft-on filament saver feature, full on, off, on-to-preset level, ramp-to-desired level, and ramp off control. ALC 600 W dimmers do not require derating in multi-gang dimmer installations.

RELATED PRODUCTS

ALC DIMMER SWITCH,
600 W

363143-01 (WHITE)

LIGHTING CONTROL SWITCHES

PART #	DESCRIPTION	PART #	DESCRIPTION
363143-21 (White)	ALC Dimmer Switch w/LED, 600 W, Smooth Paddle	364722-21 (White)	ALC Non-Dimming Switch w/LED, 900 W, Smooth Paddle
363143-22 (Ivory)	ALC Dimmer Switch w/LED, 600 W, Smooth Paddle	364722-22 (Ivory)	ALC Non-Dimming Switch w/LED, 900 W, Smooth Paddle
363143-23 (Almond)	ALC Dimmer Switch w/LED, 600 W, Smooth Paddle	364722-23 (Almond)	ALC Non-Dimming Switch w/LED, 900 W, Smooth Paddle
363143-24 (Brown)	ALC Dimmer Switch w/LED, 600 W, Smooth Paddle	364722-24 (Brown)	ALC Non-Dimming Switch w/LED, 900 W, Smooth Paddle
363143-25 (Black)	ALC Dimmer Switch w/LED, 600 W, Smooth Paddle	364722-25 (Black)	ALC Non-Dimming Switch w/LED, 900 W, Smooth Paddle
363143-28 (Lt. Almond)	ALC Dimmer Switch w/LED, 600 W, Smooth Paddle	364722-28 (Lt. Almond)	ALC Non-Dimming Switch w/LED, 900 W, Smooth Paddle
363143-01 (White)	ALC Dimmer Switch, 600 W, Dimpled Paddle	364335-01 (White)	ALC Dimmer Switch, 900 W, Dimpled Paddle
363143-02 (Ivory)	ALC Dimmer Switch, 600 W, Dimpled Paddle	364335-02 (Ivory)	ALC Dimmer Switch, 900 W, Dimpled Paddle
363143-03 (Almond)	ALC Dimmer Switch, 600 W, Dimpled Paddle	364335-03 (Almond)	ALC Dimmer Switch, 900 W, Dimpled Paddle
363143-04 (Brown)	ALC Dimmer Switch, 600 W, Dimpled Paddle	364335-04 (Brown)	ALC Dimmer Switch, 900 W, Dimpled Paddle
363143-05 (Black)	ALC Dimmer Switch, 600 W, Dimpled Paddle	364335-05 (Black)	ALC Dimmer Switch, 900 W, Dimpled Paddle
363143-08 (Lt. Almond)	ALC Dimmer Switch, 600 W, Dimpled Paddle	364335-08 (Lt. Almond)	ALC Dimmer Switch, 900 W, Dimpled Paddle
363143-11 (White)	ALC Dimmer Switch, 600 W, Smooth Paddle	364335-11 (White)	ALC Dimmer Switch, 900 W, Smooth Paddle
363143-12 (Ivory)	ALC Dimmer Switch, 600 W, Smooth Paddle	364335-12 (Ivory)	ALC Dimmer Switch, 900 W, Smooth Paddle
363143-13 (Almond)	ALC Dimmer Switch, 600 W, Smooth Paddle	364335-13 (Almond)	ALC Dimmer Switch, 900 W, Smooth Paddle
363143-14 (Brown)	ALC Dimmer Switch, 600 W, Smooth Paddle	364335-14 (Brown)	ALC Dimmer Switch, 900 W, Smooth Paddle
363143-15 (Black)	ALC Dimmer Switch, 600 W, Smooth Paddle	364335-15 (Black)	ALC Dimmer Switch, 900 W, Smooth Paddle
363143-18 (Lt. Almond)	ALC Dimmer Switch, 600 W, Smooth Paddle	364335-18 (Lt. Almond)	ALC Dimmer Switch, 900 W, Smooth Paddle
364335-21 (White)	ALC Dimmer Switch w/LED, 900 W, Smooth Paddle		
364335-22 (Ivory)	ALC Dimmer Switch w/LED, 900 W, Smooth Paddle		
364335-23 (Almond)	ALC Dimmer Switch w/LED, 900 W, Smooth Paddle		
364335-24 (Brown)	ALC Dimmer Switch w/LED, 900 W, Smooth Paddle		
364335-25 (Black)	ALC Dimmer Switch w/LED, 900 W, Smooth Paddle		
364335-28 (Lt. Almond)	ALC Dimmer Switch w/LED, 900 W, Smooth Paddle		

For additional Lighting Controls, see P&S Dimmers & Fan Speed Controls, Section M.

On-Q/Legrand® Home Systems Advanced Lighting Control Switches

Pass & Seymour



ALC AUXILIARY SWITCHES

Controls multiple gangs of lighting controls with one switch.

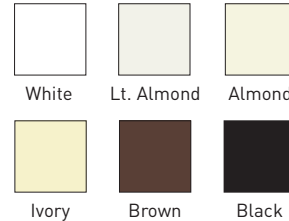
Can replace up to four lighting switches, reducing wall clutter.



364721-05

FEATURES

- Connects directly to ALC Relay and Dimmer switches as a slave to provide multi-way local on/off and dimming control. Does not connect directly to the 120 VAC load or system controller.



RELATED PRODUCTS



ALC RELAY SWITCH,
15 A

363142-04 (BROWN)



ALC SILENT SWITCH,
900 W

364722-12 (IVORY)

LIGHTING CONTROL SWITCHES

PART #	DESCRIPTION	PART #	DESCRIPTION
364722-01 (White)	ALC Silent Switch, 900 W, Dimpled Paddle	363142-11 (White)	ALC Relay Switch, 15 A, Smooth Paddle
364722-02 (Ivory)	ALC Silent Switch, 900 W, Dimpled Paddle	363142-12 (Ivory)	ALC Relay Switch, 15 A, Smooth Paddle
364722-03 (Almond)	ALC Silent Switch, 900 W, Dimpled Paddle	363142-13 (Almond)	ALC Relay Switch, 15 A, Smooth Paddle
364722-04 (Brown)	ALC Silent Switch, 900 W, Dimpled Paddle	363142-14 (Brown)	ALC Relay Switch, 15 A, Smooth Paddle
364722-05 (Black)	ALC Silent Switch, 900 W, Dimpled Paddle	363142-15 (Black)	ALC Relay Switch, 15 A, Smooth Paddle
364722-08 (Lt. Almond)	ALC Silent Switch, 900 W, Dimpled Paddle	363142-18 (Lt. Almond)	ALC Relay Switch, 15 A, Smooth Paddle
364722-11 (White)	ALC Silent Switch, 900 W, Smooth Paddle	364721-01 (White)	ALC Quad-Auxiliary Switch
364722-12 (Ivory)	ALC Silent Switch, 900 W, Smooth Paddle	364721-02 (Ivory)	ALC Quad-Auxiliary Switch
364722-13 (Almond)	ALC Silent Switch, 900 W, Smooth Paddle	364721-03 (Almond)	ALC Quad-Auxiliary Switch
364722-14 (Brown)	ALC Silent Switch, 900 W, Smooth Paddle	364721-04 (Brown)	ALC Quad-Auxiliary Switch
364722-15 (Black)	ALC Silent Switch, 900 W, Smooth Paddle	364721-05 (Black)	ALC Quad-Auxiliary Switch
364722-18 (Lt. Almond)	ALC Silent Switch, 900 W, Smooth Paddle	364721-08 (Lt. Almond)	ALC Quad-Auxiliary Switch
363142-21 (White)	ALC Relay Switch w/LED, 15 A, Smooth Paddle	364776-01 (White)	ALC IR Designer Scene Switch
363142-22 (Ivory)	ALC Relay Switch w/LED, 15 A, Smooth Paddle	364776-02 (Ivory)	ALC IR Designer Scene Switch
363142-23 (Almond)	ALC Relay Switch w/LED, 15 A, Smooth Paddle	364776-03 (Almond)	ALC IR Designer Scene Switch
363142-24 (Brown)	ALC Relay Switch w/LED, 15 A, Smooth Paddle	364776-04 (Brown)	ALC IR Designer Scene Switch
363142-25 (Black)	ALC Relay Switch w/LED, 15 A, Smooth Paddle	364776-05 (Black)	ALC IR Designer Scene Switch
363142-28 (Lt. Almond)	ALC Relay Switch w/LED, 15 A, Smooth Paddle	364776-08 (Lt. Almond)	ALC IR Designer Scene Switch
363142-01 (White)	ALC Relay Switch, 15 A, Dimpled Paddle	364720-01 (White)	ALC Designer Scene Switch
363142-02 (Ivory)	ALC Relay Switch, 15 A, Dimpled Paddle	364720-02 (Ivory)	ALC Designer Scene Switch
363142-03 (Almond)	ALC Relay Switch, 15 A, Dimpled Paddle	364720-03 (Almond)	ALC Designer Scene Switch
363142-04 (Brown)	ALC Relay Switch, 15 A, Dimpled Paddle	364720-04 (Brown)	ALC Designer Scene Switch
363142-05 (Black)	ALC Relay Switch, 15 A, Dimpled Paddle	364720-05 (Black)	ALC Designer Scene Switch
363142-08 (Lt. Almond)	ALC Relay Switch, 15 A, Dimpled Paddle	364720-08 (Lt. Almond)	ALC Designer Scene Switch

Pass & Seymour



On-Q/Legrand® Home Systems Advanced Lighting Control Switches

Operate groups of lights to create the perfect ambiance or feel more secure with our convenient, one-touch controls. On-Q Advanced Lighting Control Switches and Dimmers come in attractive decorator-style wall plates in up to six colors to match any décor, and they can handle incandescent, halogen and conventional magnetic low-voltage loads.



IR DESIGNER SCENE SWITCH

Smaller stylish buttons and preprinted gold labels add high-end ambiance.

Lighting scenes can be programmed at the switch.

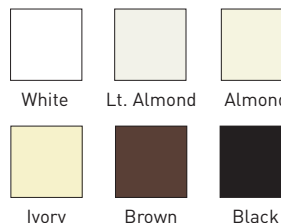
Lighting can be turned on/set to levels or turned off with handheld remote control.



364776-03
[See Page O-79]

FEATURES

- Connects to a controller to provide program control of lights, lighting scenes, house modes or devices such as motorized blinds, fans, garage doors, etc. Does not directly control a 120 VAC load.



RELATED PRODUCTS



HOME LIGHTING
CONTROLLER
364644-01
[See Page O-76]



HOME LIGHTING
DISTRIBUTION MODULE
364645-01
[See Page O-76]

LIGHTING CONTROLS

PART #	DESCRIPTION	PART #	DESCRIPTION
363145-01 (White)	ALC Auxiliary Switch, Dimpled Paddle	363145-11 (White)	ALC Auxiliary Switch, Smooth Paddle
363145-02 (Ivory)	ALC Auxiliary Switch, Dimpled Paddle	363145-12 (Ivory)	ALC Auxiliary Switch, Smooth Paddle
363145-03 (Almond)	ALC Auxiliary Switch, Dimpled Paddle	363145-13 (Almond)	ALC Auxiliary Switch, Smooth Paddle
363145-04 (Brown)	ALC Auxiliary Switch, Dimpled Paddle	363145-14 (Brown)	ALC Auxiliary Switch, Smooth Paddle
363145-05 (Black)	ALC Auxiliary Switch, Dimpled Paddle	363145-15 (Black)	ALC Auxiliary Switch, Smooth Paddle
363145-08 (Lt. Almond)	ALC Auxiliary Switch, Dimpled Paddle	363145-18 (Lt. Almond)	ALC Auxiliary Switch, Smooth Paddle

On-Q/Legrand® Home Systems PLC Lighting Controls

Pass & Seymour



PLC DIMMING SWITCH WITH LED

Ideal for retrofit installations, the new On-Q PLC Switches provide advanced lighting control features without extra communications wiring.

Quick installation to line voltage leads helps reduce time on the job.

Programmable addressing eliminates need for manual dial settings.

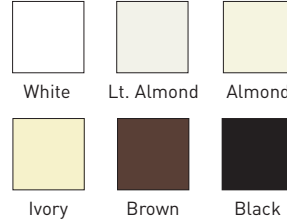
Professional look and operations, which is consistent with other On-Q Lighting Switches.



364799-21 (White)

FEATURES

- Preset dim.
- True rocker action.
- Programmable addressing.
- On/off, bright, all on/all off.



RELATED PRODUCTS



PLC AUXILIARY SWITCH
364800-11 (WHITE)



PLC NON-DIMMING
SWITCH, 900 W
364802-21 (WHITE)

LIGHTING CONTROLS

PART #	DESCRIPTION	PART #	DESCRIPTION
364798-21 (White)	PLC Dimmer w/LED, 600 W, Smooth Paddle	364802-21 (White)	PLC Non-Dimming Switch w/LED, 900 W, Smooth Paddle
364798-22 (Ivory)	PLC Dimmer w/LED, 600 W, Smooth Paddle	364802-22 (Ivory)	PLC Non-Dimming Switch w/LED, 900 W, Smooth Paddle
364798-23 (Almond)	PLC Dimmer w/LED, 600 W, Smooth Paddle	364802-23 (Almond)	PLC Non-Dimming Switch w/LED, 900 W, Smooth Paddle
364798-28 (Lt. Almond)	PLC Dimmer w/LED, 600 W, Smooth Paddle	364802-28 (Lt. Almond)	PLC Non-Dimming Switch w/LED, 900 W, Smooth Paddle
364799-21 (White)	PLC Dimmer w/LED, 900 W, Smooth Paddle	364800-11 (White)	PLC Auxiliary Switch, Smooth Paddle
364799-22 (Ivory)	PLC Dimmer w/LED, 900 W, Smooth Paddle	364800-12 (Ivory)	PLC Auxiliary Switch, Smooth Paddle
364799-23 (Almond)	PLC Dimmer w/LED, 900 W, Smooth Paddle	364800-13 (Almond)	PLC Auxiliary Switch, Smooth Paddle
364799-28 (Lt. Almond)	PLC Dimmer w/LED, 900 W, Smooth Paddle	364800-18 (Lt. Almond)	PLC Auxiliary Switch, Smooth Paddle

On-Q/Legrand® Home Systems
Category 5 Camera Monitoring

On-Q packages together everything you will need for a basic camera monitoring system that's easy to order and inventory. Our innovative Camera Systems use standard Cat 5 cable to deliver crisp video images, power and audio (optional) back to the wiring panel. And, our new custom camera mounting plates cut installation time in half.



CATEGORY 5 HOME CAMERA KIT

Cameras can be seen over the Internet, TV and monitor — all at the same time.

Wiring with Cat 5 makes for a more cost effective installation — no need for additional cable.

Weatherproof cameras designed for indoor or outdoor applications.



Home runs to the structured wiring panel, to integrate other systems, such as the audio and IP networks.

Power, video and audio run over the same Cat 5 wire.

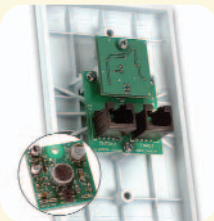
CATEGORY 5 HOME CAMERA KITS

PART #	DESCRIPTION	QUANTITY	COLOR
F7644 (White)	Category 5 Home Camera Kit (With Color Cameras)		
	Color Bullet Cameras	2	White
	Camera Mounting Plates	2	White
	Category 5 Camera Module	1	N/A
	Single Channel Modulator	1	N/A
	One RCA to RCA Patch Cord	1	N/A
	Power Supply, 12 Volt, 1.5 A	1	N/A
F7645 (White)	Category 5 Home Camera Kit (With B&W Cameras)		
	Black & White Bullet Cameras	2	White
	Camera Mounting Plates	2	White
	Category 5 Camera Module	1	N/A
	Single Channel Modulator	1	N/A
	One RCA to RCA Patch Cord	1	N/A
	Power Supply, 12 Volt, 1.5 A	1	N/A

TIPS & TECHNOLOGY: HOME CAMERAS IN 3 EASY STEPS



1 Run one home run of Cat 5 from the wiring panel to the camera.



2 Plug your Cat 5 wire into the back of the camera wall plate.



3 Twist in your camera. You're done!

On-Q/Legrand® Home Systems Category 5 Camera Monitoring

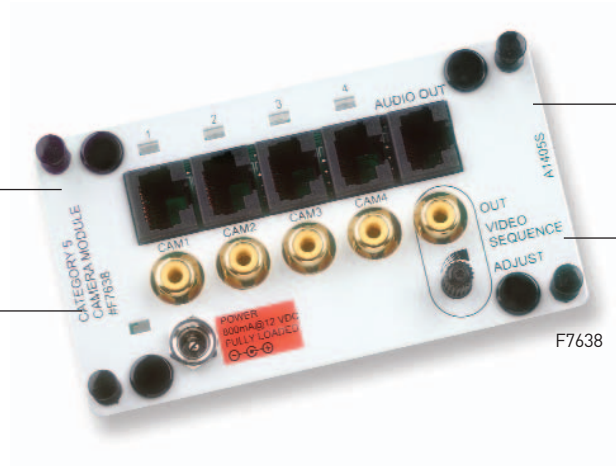
Pass & Seymour



CATEGORY 5 CAMERA MODULE

One wire installation — power, video and audio share one Cat 5 cable.

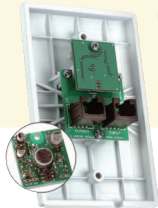
On-board sequencing of up to four camera images change sequence time from 1-60 seconds.



Supports up to four Cat 5 On-Q cameras with the ability to easily convert any Cat 5 outlet in the home to support a security camera.

Combine all four cameras on a single output.

RELATED PRODUCTS



CAMERA
MICROPHONE
F7642



BULLET CAMERA
B&W
F2284
(See Page O-84)



QUAD TILER
F1014

CATEGORY 5 CAMERA MODULE

PART #	DESCRIPTION	INPUTS
F7638	Category 5 Camera Module	4

CAMERA ACCESSORIES

PART #	DESCRIPTION
F7642	Camera Microphone
F1014	Quad Tiler, B&W With Cables & Mounting Bracket
F2217	RCA to RCA Patch Cable, 90 Degree
F2218	RCA to RCA "Y" Splitter Cable, 90 Degree
F2221	Category 5 Mic Cable (RJ45 to Quad RCA Audio)
F2213	BNC to RCA Cables (Pack of 5)
F1001	1 Channel Modulator
F1003	3 Channel Modulator

Pass & Seymour



On-Q/Legrand® Home Systems Category 5 Camera Monitoring

On-Q offers optional accessories to make your camera solution complete. If you add more cameras to your system, we offer additional modulators for viewing those cameras on the TV. Or, you can add a Quad Tiler with real time refresh to a camera system so all camera views can be monitored at one time on a TV screen.



CAMERA MOUNTING PLATE

Works with both indoor and outdoor applications.

Unique mounting plate makes installation of On-Q Category 5 Cameras fast, efficient and flexible.

Optional microphone (F7642) mounts to back of camera mounting plate (See Page O-83 for details).



HUMIDISEAL™ INSIDE

Outdoor cameras face significant environmental extremes — it is not uncommon for 30 degree swings in the matter of a few hours. These quick changes in temperature can result in condensation on the lens which causes visible fogging. To protect the On-Q products, we engineered our cameras to reduce the internal humidity within the camera while maintaining the flexibility of indoor placement. HumidiSeal™, the name given to these innovative design changes, has raised the bar in anti-fogging protection. Rest easy — HumidiSeal™ guarantees a clear camera picture with every installation.

RELATED PRODUCTS



INFRARED BULLET
CAMERA B&W

F2287



DECORATOR MOUNT
MINI CAMERA

F2286 (WHITE)

CATEGORY 5 CAMERAS

PART #	DESCRIPTION	HUMIDISEAL	INDOOR/OUTDOOR	SENSITIVITY	RESOLUTION
F2284	Bullet Camera B&W, Cat 5	Yes	Both	.1 lux	420 lines
F2299	Bullet Camera Color, Cat 5	Yes	Both	.5 lux	350 lines
F2286-WH (White)	Decorator Mount Mini Camera, Cat 5	No	Indoor	.3 lux	400 lines
F2287	Infrared Bullet Camera B&W, Cat 5	No	Both	1.0 lux	420 lines

On-Q/Legrand® Home Systems Category 5 Camera Monitoring

Pass & Seymour



LCD/FLAT PANEL COLOR DISPLAY

Easily integrates with the On-Q Cat 5 Camera and Intercom systems for added home security and baby monitoring.

3.5" TFT liquid crystal display and 480 x 234 high color resolution display.

Mounts in a standard 3-gang box.



F2297-WH



White



Ivory



Lt. Almond



Black



F2297-BK

RELATED PRODUCTS



IP VIDEO SERVER
F2295



LCD DISPLAY MODULE
F7599

WEB CAMERA MONITORING & ROUTERS

PART #	DESCRIPTION
F2295	IP Video Server for Internet Viewing of Cameras (includes four RCA to BNC Cables and Mounting Bracket)
F2213	BNC to RCA Cables (Pack of 5)
F7562	4-Port Internet Firewall Router
F7559	8-Port Internet Firewall Router

CATEGORY 5 LCD MONITOR DISTRIBUTION

PART #	DESCRIPTION	GANG BOX SPACES
F7599	LCD Display Module* (Supports two Camera Inputs and two LCD Monitors)	1-bay module space
F2297-BK (Black)	3.5" LCD/Flat Panel Color Monitor	3-gang box
F2297-WH (White)	3.5" LCD/Flat Panel Color Monitor	3-gang box
F2297-IV (Ivory)	3.5" LCD/Flat Panel Color Monitor	3-gang box
F2297-LA (Lt. Almond)	3.5" LCD/Flat Panel Color Monitor	3-gang box

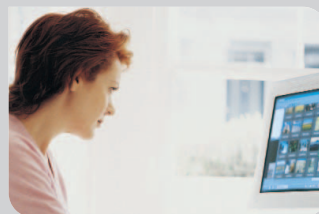
*Requires the Category 5 Camera Module (F7638) to function properly.

LCD CAMERA KITS

PART #	DESCRIPTION
CMB1L1K-W	Front Door Camera/LCD Kit Kit includes: One white LCD Display, LCD Module, Patch Cable, one B&W Camera, Camera Module and Power Supplies
CMB2L2K-W	Front and Back Door Camera/LCD Kit Kit includes: Two white LCD displays, LCD Module, Patch Cables, two B&W Cameras, Camera Modules and Power Supplies
CMB4L2K-W	Whole House Camera/LCD Kit Kit includes: Two white LCD displays, LCD Module, Patch Cables, four B&W Cameras, Camera Modules and Power Supplies

On-Q/Legrand® Home Systems Management System

Provides cost-effective security, energy management, lighting control and device control for enhanced security and automation applications. All models feature an integral serial communication port for PC programming and ALC lighting control. All HMS Models are UL Listed.

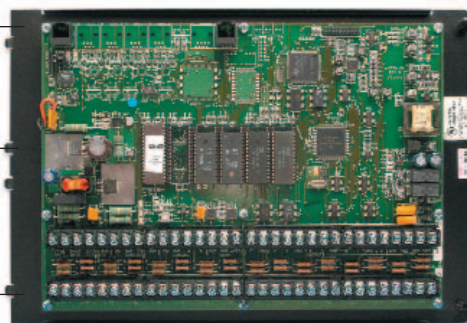


MANAGEMENT CONTROLLERS

Lighting Control: Can control lighting circuits equipped either with X-10 modules (available from other sources) or ALC Lighting Control modules.

HVAC Control: On-Q two-way communicating thermostats can be connected to the system for temperature control based on day and time as well as house occupancy/arming status.

Auxiliary Device Control: Allows the system to control devices such as lawn sprinkler systems, entry gates and garage doors.



364503-01

FEATURES

- Available in three models, HMS 800, HMS 950 and HMS 1100.
- Provides a comprehensive set of security features.
- Controls lighting, HVAC, and Auxiliary Devices.
- HMS modules fit easily into lower portion of enclosure.
- HMS 1100 Systems can handle up to 176 security zones.
- Advanced Lighting Control (ALC) protocol provides superior reliability with two-way hardwired communications.
- Dial out capability in the event of a break-in.
- Supports multiple keypads.
- UL Listed.

MANAGEMENT CONTROLLERS

PART #	DESCRIPTION
364245-01	HMS Model 800 Controller
364503-01	HMS Model 950 Controller
364506-01	HMS Model 1100 Controller

MANAGEMENT PACKAGES

PART #	DESCRIPTION	KIT INCLUDES
364651-01	HMS 800 PACKAGE	HMS 800 Controller HMS Serial Cable Kit HMS Surface Mount Keypad HMS Controller ALC Cable Interface Assembly HMS Indoor / Outdoor Temperature Sensor HMS Heat / Cool Thermostat
364652-01	HMS 950 PACKAGE	HMS 950 Controller HMS Serial Cable Kit HMS Surface Mount Keypad HMS Controller ALC Cable Interface Assembly HMS Indoor / Outdoor Temperature Sensor HMS Heat / Cool Thermostat
364653-01	HMS 1100 PACKAGE	HMS 1100 Controller HMS Serial Cable Kit HMS Surface Mount Keypad HMS Controller ALC Cable Interface Assembly HMS Indoor / Outdoor Temperature Sensor HMS Heat / Cool Thermostat HMS 950/1100 Input Expansion Module

MANAGEMENT SYSTEM CAPABILITIES AND FEATURES

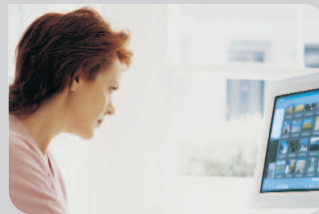
CAPACITIES	HMS 800	HMS 950	HMS 1100
Total hardwired & wireless inputs/zones per system	24	48	176
On-board hardwired inputs/zones	8	16	16
On-board two-wire smoke zones	1	4	4
16-Zone hardwire expansion modules supported	1	2	2
16-Input/16-output expansion modules supported	—	—	8
Support for supervised wireless receiver	yes	yes	yes
Wireless zones supported	16	16	64
Total ALC & X10 lighting addresses supported per system	16	64	256
ALC lighting addresses supported via on-board serial port	16	31	31
ALC lighting addresses possible via expansion module	16	62	248
Total programmable voltage outputs supported per system	10	8	136
On-board programmable voltage outputs	2	8	8
Programmable outputs possible via expansion modules	8	—	128
Short circuit protected outputs	—	yes	yes
Total programming lines	100	500	1500
Conditional program logic	yes	yes	yes
Double conditional program logic	—	yes	yes
Counter registers	yes	yes	yes
Programmable text message display	yes	yes	yes
Programmable voice messages	yes	yes	yes
Integral ethernet port	—	—	yes
Total serial ports supported per system	2	2	4
On-board serial ports	1	1	3
Serial ports possible via expansion modules	1	1	1
HMS-link protocol support	yes	yes	yes
Pro-link protocol support	yes	yes	yes
Built-in modem speed (baud rate)	300	2400	14400
Contact ID reporting	yes	yes	yes
Thermostats	2	4	64
Keypads	4	8	16
User codes	8	16	99
Partitionable areas	N/A	2	8
Fuse-less design	yes	yes	yes
Automatic daylight savings changeover	yes	yes	yes
2-Way audio module support	yes	yes	yes
Scenes (macros)	16	64	128

MANAGEMENT SYSTEM SOFTWARE

PART #	DESCRIPTION
364616-01	HMS HomeView Software
363446-01	HMS PC Access Technician Software
363446-02	HMS PC Access Homeowners Software

On-Q/Legrand® Home Systems Management System Power

In case of a power failure, On-Q HMS Backup Battery will restore power to the security system for a duration of two to five hours, giving your homeowners peace of mind. Backup Batteries mount in any On-Q enclosure, and additional accessories also are available to enhance the home's HMS System.



HMS BACKUP BATTERY

Battery required for system backup during power outage.

HMS POWER TRANSFORMER—MODEL 800

16 VAC, 40 VA transformer for the HMS Model 800 (364245-01).

HMS POWER TRANSFORMER—MODEL 950/1100

24 VAC, 40VA transformer for the HMS Models 950 or 1100.

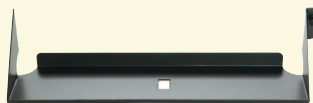
BATTERY HOLDER, HALF WIDTH

Accommodates a 12 V, 7 AH battery.

HMS KEYPAD/THERMOSTAT CONNECTOR ASSEMBLY

Used to connect an HMS thermostat or keypad to the HMS controller for system communications. Pigtail connector design.

RELATED PRODUCTS



BATTERY HOLDER,
FULL WIDTH

364265-01

Accommodates two 12 V,
7 AH batteries.

MANAGEMENT SYSTEM POWER

PART #	DESCRIPTION
363521-01	HMS Backup Battery
363522-02	16.5 VAC, 40 VA HMS Power Transformer—Model 800
363522-01	24 VAC, 40 VA HMS Power Transformer—Model 950/1100
364264-01	Battery Holder, Half Width
364265-01	Battery Holder, Full Width
364538-01	HMS Keypad/Thermostat Connector Assembly

MANAGEMENT ACCESSORIES

PART #	DESCRIPTION
363436-01	HMS 950/1100 Input Expansion Module
363437-01	HMS Relay Expansion Module, 4 Outputs

MANAGEMENT MANUALS

PART #	DESCRIPTION
364392-01	Model 800 Owners Manual
364392-02	Model 800 Installers Manual
364543-01	Model 950 Owners Manual
364543-02	Model 950 Installers Manual
364544-01	Model 1100 Owners Manual
364544-02	Model 1100 Installers Manual

On-Q/Legrand® Home Systems Mounting Plates

Pass & Seymour



ADEMCO CONTROLLER MOUNTING PLATES



PART #	DESCRIPTION
364433-01	Ademco Universal Expansion Plate 6.9"H x 6.42"W
364714-08	Ademco Half-Width Controller Mounting Plate 8.9"H x 6.42"W
364715-01	Ademco Universal Controller Mounting Plate 8.9"H x 12.95"W

CADDX CONTROLLER MOUNTING PLATES

PART #	DESCRIPTION
364259-01	Caddx Mounting Plate 5.9"H x 12.95"W
364516-01	Caddx NetworX Series Mounting Plate 3.9"H x 12.95"W



DSC CONTROLLER MOUNTING PLATES



PART #	DESCRIPTION
364466-01	DSC 832/1555 Mounting Plate, Full Width 3.9"H x 12.95"W
364465-01	DSC 1555 Mounting Plate, Half Width 3.9"H x 6.42"W

MOUNTING PLATES

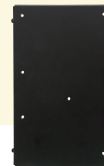


BOSCH 9000 SERIES
CONTROLLER
MOUNTING PLATE
364639-01



PARADOX CONTROLLER
MOUNTING PLATE

364637-01



DETECTION SYSTEMS
SERIES 7400
MOUNTING PLATE
364611-01

PART #	DESCRIPTION
364639-01	Bosch 9000 Series Controller Mounting Plate 9.9"H x 12.95"W
364640-01	Bosch 2000 & 6000 Series Controller Mounting Plate 7.9"H x 6.42"W
364637-01	Paradox Controller Mounting Plate 7.9"H x 6.42"W
364638-01	Paradox Expansion Module Mounting Plate 7.9"H x 6.42"W

PART #	DESCRIPTION
364611-01	Detection Systems Series 7400 Mounting Plate 9.9"H x 6.42"W
364612-01	Detection Systems Series 7200 Mounting Plate 7.9"H x 6.42"W
364613-01	Detection Systems Expansion Module Mounting Plate 2.9"H x 6.42"W

Pass & Seymour



On-Q/Legrand® Home Systems Management Wireless Control

Homeowners can wirelessly operate their entire home lighting system with just a small four button remote control that fits on a key chain. The RF Remote Control Receiver/Transmitter Combo allows simple "Press & Hold" scene lighting programming. The receiver is typically installed in the garage and supports seven keyfob remote control transmitters.



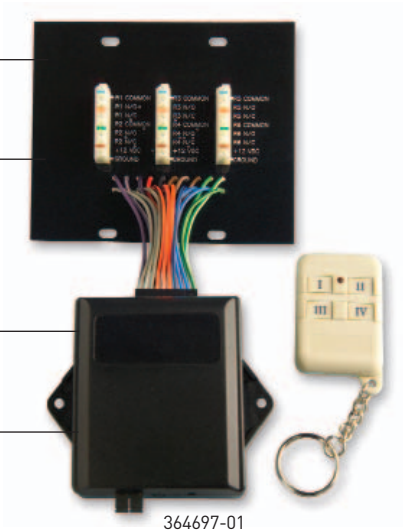
RF REMOTE COMBO

Supports remote control of lighting for up to six general purpose outlets.

All connection points consist of 110-style IDC connectors for connection of Cat 5, or 5e cable.

Includes receiver interface and keyfob.

Remote control can be used up to 250 feet.



FEATURES

- Provides connection points for wiring the RF Remote Receiver to Lighting and HMS.
- Connection points are provided for the "Normally Open," "Normally Closed" and "Common" terminals.
- Buttons provide simple "Press & Hold" scene lighting programming.
- Supports seven keyfob remote control transmitters.

RELATED PRODUCTS



RF REMOTE KEYFOB
TRANSMITTER
364708-01



RF REMOTE
DISTRIBUTION MODULE
364696-01

MANAGEMENT SYSTEM POWER

PART #	DESCRIPTION
364697-01	RF Remote Controller/Transmitter Combo
364708-01	RF Remote Keyfob Transmitter
364762-01	Visor Clip for RF Remote Keyfob Transmitter
364696-01	RF Remote Distribution Module

On-Q/Legrand® Home Systems Management Control Keypads

Pass & Seymour



HMS HOMETOUCH TOUCH SCREEN CONSOLE

A colorful touch screen interface for HMS family controllers that facilitates graphical control of security, HVAC, lighting and other home control functions via easy-to-recognize icons.

Color touch screen display allows easy navigation of system controls.

Provides graphical control of security, lighting and HVAC systems.



364681-01

FEATURES

- Central device to manage security, HVAC and lighting systems.
- Supports arming or disarming the system.
- Monitor or change temperature settings throughout the home.
- Supports voice annunciation of alarms with an alarm verification module.
- Audio models allow a voice message to be left for users.
- UL Listed.

RELATED PRODUCTS



HMS KEYPAD

364704-01

A 48-character backlit LCD display keypad for the basic system.



HMS AUDIO KEYPAD

364704-02

A 48-character backlit LCD display keypad, with voice alarm, status, and custom messages for the enhanced system.

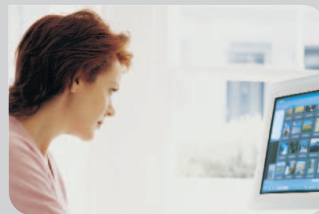
CONTROL KEYPADS

PART #	DESCRIPTION	DIMENSIONS
364681-01	HMS HomeTouch Touch Screen Console	5.9"W x 4.6"H
364704-01	HMS Keypad, Surface Mount	4.6"W x 4.5"H x 1.2"D
364717-01	HMS Keypad, Flush Mount	4.6"W x 4.5"H x 1.2"D
364704-02	HMS Audio Keypad, Surface Mount	4.6"W x 4.5"H x 1.2"D
364717-02	HMS Audio Keypad, Flush Mount	4.6"W x 4.5"H x 1.2"D

NOTE: Custom message function applies only to the HMS 1100 System. Voice annunciation of alarms in the HMS 800, 950 and 1100 system requires the alarm verification module. The standard interface used to arm and disarm the system. Keypads can also be used to control all of the enhanced functions, including lighting and temperature control.

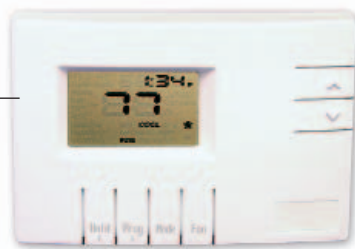
On-Q/Legrand® Home Systems Thermostats & HVAC Control

Homeowners can adjust the temperature based on day and time as well as the security and occupancy status of the house – remotely from the phone. On-Q offers a wide variety of controls for different types of cooling and heating systems. The compact controls take up minimal wall space and come with easy-to-read blue backlit displays.



HMS HEAT/COOL THERMOSTAT

Single-stage heating and cooling systems, heat only or cool only, radiant, hydronic, forced air; gas or electric heat (1 stage cool, 1 stage heat).



363445-03

FEATURES

- Can be configured to provide an alarm that calls the monitoring station in the event the temperature drops too low.
- Remote Temperature Sensors can be mounted in the conditioned space, and the thermostat can be mounted remotely for protection from tampering or for aesthetic reasons.
- Both sensor models can be located up to 50 feet from the thermostat, using 24-gauge 2-conductor-plus-shield wire.
- Remote Sensors must be mounted in the same locations appropriate for a thermostat for best performance (for example, on an inside wall, free of draft from vents, away from sunlight, windows, etc).

RELATED PRODUCTS



THERMOSTAT SENSOR,
FLUSH MOUNT

363443-03

- Replaces the thermostat's thermistor, allowing discrete or remote monitoring.
- Can be flush or surface mounted in the drywall and painted over to become almost invisible in a residential installation.

THERMOSTATS

PART #	DESCRIPTION	DIMENSIONS
364718-01	HMS Heat/Cool Thermostat, Blue Backlit Display	5.5"W x 3.75"H x 1.1"D
364718-02	HMS Heat Pump Thermostat, Blue Backlit Display	5.5"W x 3.75"H x 1.1"D
363445-03	HMS Multi-Stage Heat/Cool Thermostat	5.5"W x 3.75"H x 1.1"D
364718-03	HMS Multi-Stage Heat/Pump Thermostat - Blue Backlit Display	5.5"W x 3.75"H x 1.1"D
363445-04	HMS Zone Control Thermostat	5.5"W x 3.75"H x 1.1"D
364718-04	HMS Zone Control Thermostat , Blue Backlit Display	5.5"W x 3.75"H x 1.1"D
364718-05	HMS Multi-Stage Heat Pump Thermostat, Blue Backlit Display	5.5"W x 3.75"H x 1.1"D

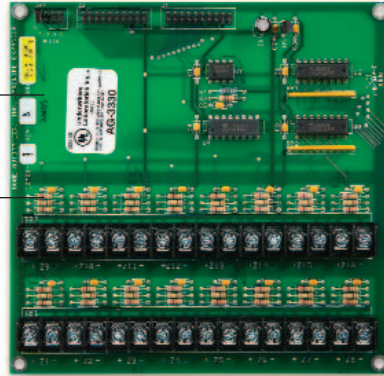
THERMOSTAT SENSORS

PART #	DESCRIPTION	DIMENSIONS
363443-02	Thermostat Sensor, Surface Mount	2"W x 1.5"H x 1"D
363443-03	Thermostat Sensor, Flush Mount	1.5" in diameter
363443-04	HMS Indoor/Outdoor Temperature Sensor	2.75"W x 2.75"H x 1"D
363443-05	HMS Temperature & Humidity Sensor	2.75"W x 2.75"H x 1"D
364538-01	HMS Keypad/Thermostat Connector Assembly	N/A

INPUT EXPANSION MODULE

Adds 16 hardwire zones to either the HMS 950 or 1100 system.

Each of the 16-zone inputs can be configured as a burglary zone, a fire zone, a temperature zone or an auxiliary input.



363436-01

FEATURES

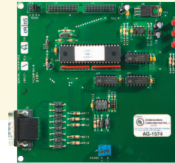
- Relay Expansion Modules add four or eight independent relays used as outputs for either the HMS 950 or 1100 systems.
- HMS 800 Expansion Module adds 16 wired zones and 16 outputs to the HMS 1100 controllers.
- PLC Transmitter Kit sends control signals to X-10 lighting products, and can be used with any home management system.
- Model Alarm Verification Module enables monitoring and two-way voice communication between the central station and the residence.

RELATED PRODUCTS



HMS RELAY EXPANSION
MODULE, 8 OUTPUTS

364269-01



HMS SERIAL
INTERFACE MODULE

363737-01

MANAGEMENT ACCESSORIES

PART #	DESCRIPTION
363436-01	Input Expansion Module
363437-01	Relay Expansion Module, 4 Outputs
364269-01	Relay Expansion Module, 8 Outputs
364449-01	8 Output Relay Expansion Module Mounting Plate
364268-01	HMS 1100A Expansion Module, 16 Outputs
364387-01	HMS 800 Expansion Module
363438-01	PLC Transmitter Kit
363439-01	Dual PLC Transmitter Kit
364806-01	EZ-Scene ALC Lighting Interface, One Branch
364806-02	EZ-Scene ALC Lighting Interface, Four Branch
363441-01	Model Alarm Verification Module
363737-01	Serial Interface Module
364270-01	HMS Expansion Mounting Plate
364408-01	HMS 800 ALC Interface Cable Assembly

REPLACEMENT ACCESSORIES

PART #	DESCRIPTION
364278-01	HMS Controller Mounting Plate Kit
364280-01	HMS Controller Terminal Strip Kit
363619-01	RJ-31X Cable Assembly
364282-01	HMS 950/1100 Replacement Main Fuse
364282-02	HMS 950/1100 Replacement Battery Fuse

Pass & Seymour



On-Q/Legrand® Home Systems Management Kits

On-Q/Legrand offers several home management system accessories to make installation easier and to accommodate a variety of different configurations.



SERIAL INTERFACE CABLE KIT

Used to connect a computer to the Serial Interface Module [363737-01]. Consists of two DB9 to RJ45 jack adapters, one 3' RJ45 patch cable and one 7' RJ45 patch cable.

SERIAL INTERFACE MODULE

Connects controller to third-party equipment such as a PC or touch screen via RS-232 or RS-485.

HMS CONTROLLER FIRMWARE UPGRADE KIT

An HMS controller firmware EPROM used to update the controller feature set.

HMS EXPANSION MOUNTING PLATE

8" half-width plate designed to mount the ALC Interface [364806-01, -02], Serial Interface Module [363737-01], Input Expansion Module [363436-01], and the Alarm Verification Module [363441-01]. 8"H x 6.5"W.

HMS CONTROLLER ALC CABLE INTERFACE ASSEMBLY

Used to control ALC lighting using the on-board serial port of the HMS 800, 950 or 1100 controller. Includes USOC biscuit jack and RJ25 patch cable.

HMS 800/950/1100 SERIAL CABLE KIT

Includes a DB9 to 6-pin modular cable adapter and a 6' modular cable.



364261-01

MANAGEMENT KITS

PART #	DESCRIPTION
364261-01	Serial Interface Cable Kit
363656-04	HMS Controller Firmware Upgrade Kit - Model 800 363656-04
363656-01	HMS Controller Firmware Upgrade Kit - Model 925 363656-01
363656-05	HMS Controller Firmware Upgrade Kit - Model 950 363656-05
363656-02	HMS Controller Firmware Upgrade Kit - Model 1050 363656-02
363656-06	HMS Controller Firmware Upgrade Kit - Model 1100 363656-06
364261-02	HMS 800/950/1100 Serial Cable Kit
364278-01	HMS Controller Mounting Plate Kit
364280-01	HMS Controller Terminal Strip Kit

On-Q/Legrand® Home Systems Management Software

Pass & Seymour

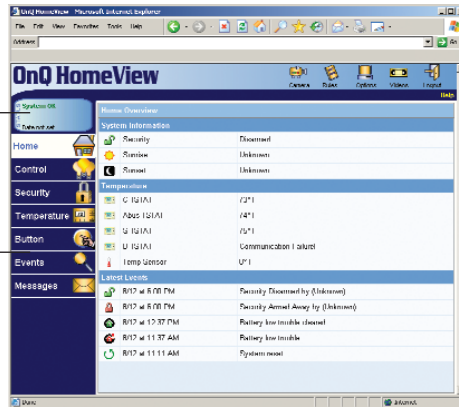


HMS HOMEVIEW SOFTWARE

These software packages make it easy for technicians and homeowners to program and to modify the programming of an On-Q Management System.

Operates locally via a local area network, or remotely through a high-speed Internet connection.

Runs on a Windows 98, 2000, NT or XP Professional computer connected to an HMS controller.



FEATURES

- Operates with any On-Q Management System.
- PC Access Technician Software used by installer for programming and diagnostic program for home management systems.
- PC Access Homeowners Software installed on homeowner's PC for more control over home management systems than a console (keypad) provides.
- ALC BranchTech Software enables installer to directly control the operation of up to 31 ALC switches.

RELATED PRODUCTS



ALC TECHNICIAN'S TOOL KIT

364437-01

Kit contains an ALC Lighting Interface Module, Light Kit (one stand-mounted two-gang work box loaded with a 500 W dimmer switch and a wired outlet), BranchTech Software and Installer's Guide.

SOFTWARE

PART #	DESCRIPTION
364630-01	On-Q Lighting SceneTech Software
364616-01	HMS HomeView Software
363446-01	On-Q HMS PC Access Technician Software
363446-02	On-Q HMS PC Access Homeowners Software
364437-01	ALC Technician's Tool Kit