

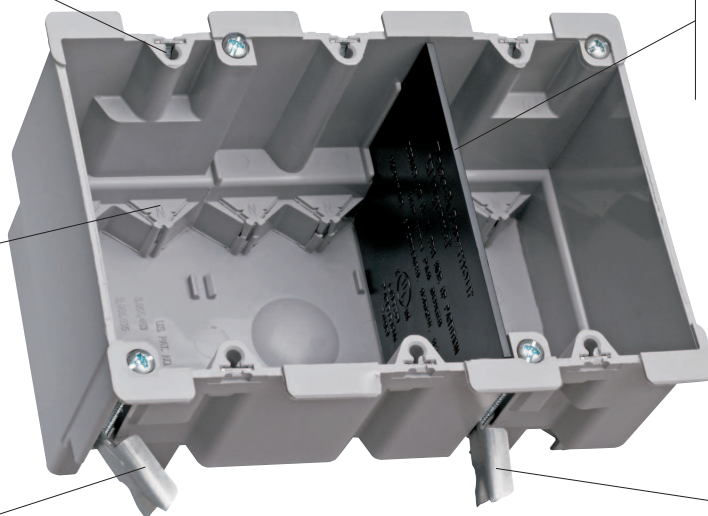
**Quick/Click® feature** secures devices quickly and easily. Does not strip when over-torqued. See Page P-14 for details.

**Big 52 cubic inch capacity.**

**Divider plate** (LVDIV-1, sold separately) used when installing line and low-voltage devices or multiple 277 volt devices in same box. See Page P-5 for details.

**Easy installation,** rectangular cutout.

**4 Auto/Clamps® on each end** eliminate the need for separate cable clamps. See Page P-14 for details.



**Metal swing bracket** for quick mounting in existing walls.

**Swing bracket adjusts** from 1 1/4" to 1/8".

**S3-52-W**  
3 Gang Old Work Box shown with  
Divider Plate, LVDIV-1

***Durable, impact-resistant thermoplastic boxes in a full range of sizes — complemented by innovative extras that cut installation time.***

## Index

Device	Page Number
Switch & Outlet Boxes	P-2, P-3
Old Work Boxes & Shallow Boxes	P-4
Low-Voltage Brackets	P-5
Wood & Steel Stud Bracket Boxes	P-6
Screw Mount Steel Stud Boxes	P-7
4" Square Boxes & Covers	P-8
Contractor Packs	P-9
4" Round Ceiling Boxes	P-10 – P-12
Round Ceiling Boxes	P-13
Floor Box Assembly	P-14
Applications & Product Features	P-15 – P-17

Pass &amp; Seymour



## Slater® Plastic Boxes Switch & Outlet Boxes

With Captive Mounting Nails on Each End with Quick/Click®



S1-18-R



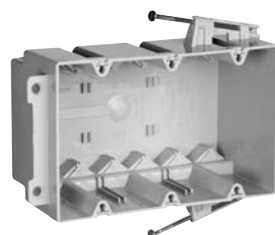
S1-22-R



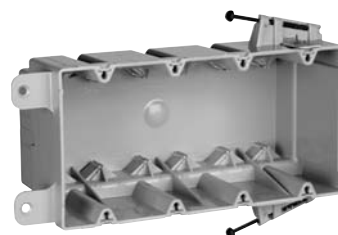
S2-35-RAC



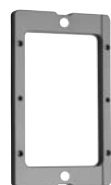
S2-35-RACMH



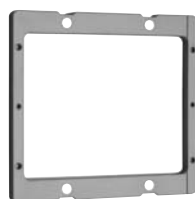
S3-54-RAC



S4-68-RAC



EXT1



EXT2

Catalog Number	Cu. In. Vol.	Description	Dimensions (inches)			Wire Fill (AWG)	Qty. Per Carton
			L	W	D		
<b>Switch &amp; Outlet Boxes with Quick/Click®</b>							
S1-18-R	18.0	<b>Single gang.</b> 2 Quick/Entries® each end.	3 <sup>3</sup> / <sub>4</sub>	2 <sup>1</sup> / <sub>4</sub>	2 <sup>23</sup> / <sub>32</sub>	9 No. 14 8 No. 12 7 No. 10	100
S2-35-RAC	35.0	<b>Two gang.</b> 4 Auto/Clamps® each end.	3 <sup>31</sup> / <sub>32</sub>	3 <sup>31</sup> / <sub>32</sub>	3 <sup>3</sup> / <sub>8</sub>	17 No. 14 15 No. 12 14 No. 10	50
S2-35-RACMH	35.0	<b>Two gang.</b> 4 Auto/Clamps each end. 3" depth for manufactured housing walls.	3 <sup>3</sup> / <sub>4</sub>	4 <sup>1</sup> / <sub>16</sub>	3	17 No. 14 15 No. 12 14 No. 10	100
S3-54-RAC	54.0	<b>Three gang.</b> 6 Auto/Clamps each end.	3 <sup>31</sup> / <sub>32</sub>	5 <sup>25</sup> / <sub>32</sub>	3	27 No. 14 24 No. 12 21 No. 10	50
S4-68-RAC*	68.0	<b>Four gang.</b> Rear stabilizing bar virtually eliminates inward movement. 6 Auto/Clamps each end.	3 <sup>13</sup> / <sub>16</sub>	7 <sup>13</sup> / <sub>16</sub>	3	34 No. 14 30 No. 12 27 No. 10	25
<b>Deep Switch &amp; Outlet Boxes with Quick/Click</b>							
S1-22-R	22.5	<b>Single gang deep.</b> 2 Quick/Entries each end. Extra deep for dimmers, GFCIs and thermostats, yet suitable for 2 x 4 construction.	3 <sup>3</sup> / <sub>4</sub>	2 <sup>1</sup> / <sub>4</sub>	3 <sup>3</sup> / <sub>8</sub>	11 No. 14 10 No. 12 9 No. 10	100

All boxes are UL Listed.

UL Classified for 2 Hour Fire Resistance (\*Does not apply to Catalog Number S4-68-RAC).

Catalog Number	Cu. In. Vol.	Description	Qty. Per Carton
<b>Wall Box Extension Rings</b>			
EXT1	1.0	<b>Single gang.</b> 1/4" thick. Stackable.	10
EXT2	1.0	<b>Two gang.</b> 1/4" thick. Stackable.	10

# Slater® Plastic Boxes Switch & Outlet Boxes

With Captive Mounting Nails on Each End

**Pass & Seymour**



Slater® Plastic Boxes

Catalog Number	Cu. In. Vol.	Description	Dimensions (inches)			Wire Fill (AWG)	Qty. Per Carton
			L	W	D		
<b>Switch &amp; Outlet Boxes with Threaded Mounting Holes</b>							
P1-18-R	18.0	Single gang. 2 Quick/Entries® each end.	3¾	2¼	2 <sup>23</sup> / <sub>32</sub>	9 No. 14 8 No. 12 7 No. 10	100
P1-18-RN	18.0	Single gang. Reverse angled captive mounting nail. 2 Quick/Entries each end. Used for manufactured housing.	3¾	2¼	2 <sup>23</sup> / <sub>32</sub>	9 No. 14 8 No. 12 7 No. 10	100
<b>NEW</b> P1-22-C	22.0	Single gang. With "claw" – a temporary hold feature.	3¾	2¼	4	11 No. 14 10 No. 12 9 No. 10	100
<b>NEW</b> PH1-22-R	22.0	Single gang. Horizontal. Captive mounting nail each side.	3¾	2¼	3⅞	11 No. 14 10 No. 12 9 No. 10	100
P2-35-RAC	35.0	Two gang. 4 Auto/Clamps® each end.	3 <sup>31</sup> / <sub>32</sub>	3 <sup>31</sup> / <sub>32</sub>	3⅞	17 No. 14 15 No. 12 14 No. 10	100
P2-35-RACMH	35.0	Two gang. 4 Auto/Clamps each end. 3" depth for manufactured housing walls.	3 <sup>31</sup> / <sub>32</sub>	3 <sup>31</sup> / <sub>32</sub>	3	17 No. 14 15 No. 12 14 No. 10	100
P3-54-RACMH	54.0	Three gang. 6 Auto/Clamps each end. 3½" depth for manufactured housing walls.	3 <sup>15</sup> / <sub>16</sub>	5 <sup>15</sup> / <sub>16</sub>	3½	27 No. 14 24 No. 12 21 No. 10	50
<b>Deep Switch &amp; Outlet Boxes with Threaded Mounting Holes</b>							
P1-22-R	22.5	Single gang deep. 2 Quick/Entries each end. Extra deep for dimmers, GFCIs and thermostats, yet suitable for 2 x 4 construction.	3¾	2¼	3⅞	11 No. 14 10 No. 12 9 No. 10	100
P1-22-RN	22.5	Single gang deep. Reverse angled captive mounting nail. 2 Quick/Entries each end. Extra deep for dimmers, GFCIs and thermostats, yet suitable for 2 x 4 construction.	3¾	2¼	3⅞	11 No. 14 10 No. 12 9 No. 10	100
<b>NEW</b> P1-22-N	22.5	Single gang deep. Vertical bracket mount.	3¾	2¼	3⅞	11 No. 14 10 No. 12 9 No. 10	100

All boxes are UL Listed.  
UL Classified for 2 Hour Fire Resistance.



P1-18-R



P1-18-RN



P1-22-R



P1-22-RN



P1-22-N



PH1-22-R



P1-22-C



P2-35-RAC



P2-35-RACMH



P3-54-RACMH

All devices listed on this page conform to NEMA OS2.

Switch & Outlet Boxes

## Slater® Plastic Boxes Old Work Boxes & Shallow Boxes



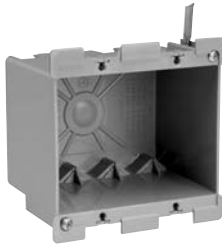
S1-18-W



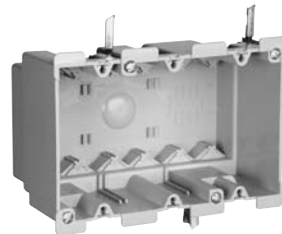
S1-22-W

Catalog Number	Cu. In. Vol.	Description	Dimensions (inches)			Wire Fill (AWG)	Qty. Per Carton
			L	W	D		
<b>Old Work Switch &amp; Outlet Boxes with Quick/Click®</b>							
S1-18-W	18.0	<b>Single gang.</b> Swing-bracket for mounting adjusts from 1¼" down to ⅞". 2 Auto/Clamps® each end.	3 <sup>23</sup> / <sub>32</sub>	2¼	3 <sup>3</sup> / <sub>32</sub>	9 No. 14 8 No. 12 7 No. 10	100
S2-32-W	32.0	<b>Two gang.</b> Swing-bracket for mounting adjusts from 1¼" down to ⅞". 4 Auto/Clamps each end.	3 <sup>23</sup> / <sub>32</sub>	4¼ <sup>16</sup>	3 <sup>3</sup> / <sub>32</sub>	16 No. 14 14 No. 12 12 No. 10	50
S3-52-W	52.0	<b>Three gang.</b> Swing-bracket for mounting adjusts from 1¼" down to ⅞". 6 Auto/Clamps each end.	3 <sup>23</sup> / <sub>32</sub>	5 <sup>7</sup> / <sub>8</sub>	3 <sup>3</sup> / <sub>32</sub>	26 No. 14 23 No. 12 20 No. 10	10
<b>Deep Old Work Switch &amp; Outlet Boxes with Quick/Click</b>							
S1-22-W	22.0	<b>Single gang deep.</b> Swing-bracket for mounting adjusts from 1¼" down to ⅞". 2 Auto/Clamps each end.	3 <sup>23</sup> / <sub>32</sub>	2 <sup>5</sup> / <sub>16</sub>	3½	–	50
<b>Shallow Switch &amp; Outlet Boxes</b> for use in limited depth applications							
P1-08-W	8.0	<b>Single gang.</b> Old work flange box for retrofit applications.	3¼	2 <sup>5</sup> / <sub>16</sub>	1⅞	–	20
P1-08-N	8.0	<b>Single gang.</b> With vertical side bracket for new construction applications.	3¼	2 <sup>5</sup> / <sub>16</sub>	1⅞	–	20

All boxes are UL listed.



S2-32-W



S3-52-W



P1-08-N



P1-08-W

# Slater® Plastic Boxes Low-Voltage Brackets

Pass & Seymour



Slater® Plastic Boxes



P1-00-WD



P1-00-ND



LVDIV-1

Catalog Number	Cu. In. Vol.	Description	Dimensions (inches)			Wire Fill (AWG)	Qty. Per Carton
			L	W	D		
<b>Low-Voltage Brackets</b> for class 2 low-voltage applications							
P1-00-WD	8.0	<b>Single Gang. Gangable.</b> Swing bracket for mounting, adjusts from 1¼" down to ½", for old work, stand alone applications.	3 <sup>23</sup> / <sub>32</sub>	2	–	–	15
P1-00-ND	8.0	<b>Single gang.</b> With vertical side bracket for new construction, with wire retaining fingers.	c	2 <sup>5</sup> / <sub>8</sub>	1 <sup>1</sup> / <sub>4</sub>	–	15
<b>NEW</b> DV2B*	22.5	<b>Two gang. For dual voltage.</b> Face mount box and bracket for new construction.	3 <sup>3</sup> / <sub>4</sub>	4	3 <sup>3</sup> / <sub>4</sub>	11 No. 14 10 No. 12 9 No. 10	12
<b>NEW</b> PLV1R*	–	<b>Single gang.</b> Nail on for new construction.	3 <sup>3</sup> / <sub>4</sub>	2 <sup>1</sup> / <sub>4</sub>	–	–	12
<b>NEW</b> PLV1S*	–	<b>Single gang.</b> Screw on for new construction.	3 <sup>3</sup> / <sub>4</sub>	2 <sup>1</sup> / <sub>4</sub>	–	–	12
<b>NEW</b> PLV1B*	–	<b>Single gang.</b> Face mount bracket for new construction.	3 <sup>3</sup> / <sub>4</sub>	2 <sup>1</sup> / <sub>4</sub>	–	–	12
<b>NEW</b> PLV2B*	–	<b>Two gang.</b> Face mount bracket for new construction.	3 <sup>3</sup> / <sub>4</sub>	4	–	–	12
<b>NEW</b> PLV1W*	–	<b>Single gang.</b> Swing bracket mount for old work.	3 <sup>3</sup> / <sub>4</sub>	2 <sup>1</sup> / <sub>4</sub>	–	–	12
<b>NEW</b> PLV2W*	–	<b>Two gang.</b> Swing bracket mount for old work.	3 <sup>3</sup> / <sub>4</sub>	4	–	–	12
<b>Divider Plate</b>							
LVDIV-1	-.5	Suitable for low-voltage or multiple 277V devices. For use with S2-35-RAC, S2-35-RACS, P2-35-RAC, S2-35-S50AC, S3-54-RAC, and S3-52-W.	–	–	–	–	12

All boxes are UL listed.

\*Available Spring 2006.

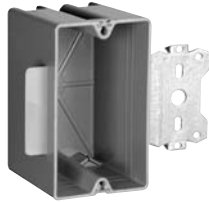
Low-Voltage Brackets

Pass &amp; Seymour



## Slater® Plastic Boxes Wood & Steel Stud Bracket Boxes

With Offset Bracket for Wood and/or Steel Mounting



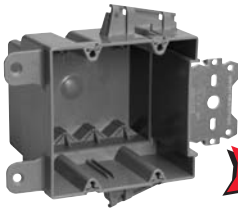
S1-18-S50



S1-18-B50



S1-22-S50



S2-35-S50AC



S3-54-S50AC



S4-68-S50AC



P1-22-B



PH1-22-B

Catalog Number	Cu. In. Vol.	Description	Dimensions (inches)			Wire Fill (AWG)	Qty. Per Carton
			L	W	D		
<b>Wood &amp; Steel Stud Bracket Boxes with Quick/Click®</b>							
S1-18-S50*	18.0	Single gang. 3/8" offset for wood and steel stud mounting. 2 Quick/Entries® each end. For use with 3/8" to 5/8" wallboard.	3 3/4	2 1/4	2 23/32	9 No. 14 8 No. 12 7 No. 10	100
S1-18-B50*	18.0	Single gang. 1/2" offset for wood and steel stud mounting. Rear stabilizing bar virtually eliminates inward movement. 2 Quick/Entries each end. For use with 3/8" to 5/8" wallboard.	3 3/4	2 1/4	2 3/4	9 No. 14 8 No. 12 7 No. 10	100
S2-35-S50AC*	35.0	Two gang. 3/8" offset for wood and steel stud mounting. 4 Auto/Clamps® each end. For use with 3/8" to 5/8" wallboard.	3 31/32	3 31/32	3 3/8	17 No. 14 15 No. 12 14 No. 10	50
S3-54-S50AC*	54.0	Three gang. 3/8" offset for wood and steel stud mounting. 6 Auto/Clamps each end. For use with 3/8" to 5/8" wallboard.	3 31/32	5 25/32	3	27 No. 14 24 No. 12 21 No. 10	25
S4-68-S50AC	68.0	Four gang. 3/8" offset for wood and steel stud mounting. Rear stabilizing bar virtually eliminates inward movement. 6 Auto/Clamps each end. For use with 3/8" to 5/8" wallboard.	3 13/16	7 13/16	3	34 No. 14 30 No. 12 27 No. 10	25
<b>Deep Wood &amp; Steel Stud Bracket Boxes with Quick/Click</b>							
S1-22-S50*	22.5	Single gang deep. 3/8" offset for wood and steel stud mounting. 2 Quick/Entries each end. For use with 3/8" to 5/8" wallboard.	3 3/4	2 1/4	3 3/8	11 No. 14 10 No. 12 9 No. 10	100

All boxes are UL Listed.

\*UL Classified for 2 Hour Fire Resistance.

Catalog Number	Cu. In. Vol.	Description	Dimensions (inches)			Wire Fill (AWG)	Qty. Per Carton
			L	W	D		
<b>Steel Stud Bracket Boxes</b>							
P1-22-B*	22.0	Single gang. 1/2" offset for steel stud mount only. 2 stabilizer legs.	3 3/4	2 1/4	4 1/4	11 No. 14 10 No. 12 9 No. 10	100
PH1-22-B*	22.0	Single gang. Horizontal. 1/2" offset for steel stud mount only. 2 stabilizer legs.	3 3/4	2 1/4	3 3/8	11 No. 14 10 No. 12 9 No. 10	100

All boxes are UL Listed.

\*UL Classified for 2 Hour Fire Resistance.

# Slater® Plastic Boxes Screw Mount Steel Stud Boxes

With Captive Combo Head Self Tapping Mounting Screws on Each End

Pass & Seymour



Slater® Plastic Boxes



S1-18-RS



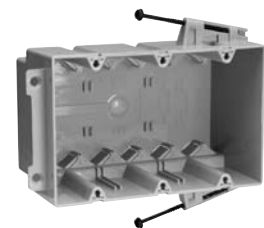
S1-22-RS



S2-35-RACS



S2-35-RACSMH



S3-54-RACS



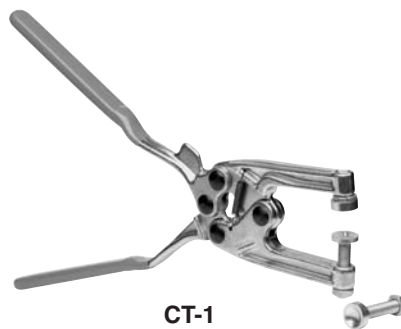
S4-68-RACS

Catalog Number	Cu. In. Vol.	Description	Dimensions (inches)			Wire Fill (AWG)	Qty. Per Carton
			L	W	D		
<b>Screw Mount, Steel Stud Boxes with Quick/Click®</b>							
S1-18-RS*	18.0	Single gang. 2 Quick/Entries® each end.	3¾	2¼	2 <sup>23</sup> / <sub>32</sub>	9 No. 14 8 No. 12 7 No. 10	100
S2-35-RACS*	35.0	Two gang. 4 Auto/Clamps® each end.	3 <sup>31</sup> / <sub>32</sub>	3 <sup>31</sup> / <sub>32</sub>	3⅝	17 No. 14 15 No. 12 14 No. 10	50
S2-35-RACSMH*	35.0	Two gang. 4 Auto/Clamps® each end. 3" depth for manufactured housing walls.	3¾	4 <sup>1</sup> / <sub>16</sub>	3	17 No. 14 15 No. 12 14 No. 10	100
S3-54-RACS*	54.0	Three gang. 6 Auto/Clamps each end.	3 <sup>31</sup> / <sub>32</sub>	5 <sup>25</sup> / <sub>32</sub>	3	27 No. 14 24 No. 12 21 No. 10	50
S4-68-RACS	68.0	Four gang. 6 Auto/Clamps each end. Rear stabilizing bar virtually eliminates inward movement.	3 <sup>13</sup> / <sub>16</sub>	7 <sup>13</sup> / <sub>16</sub>	3	34 No. 14 30 No. 12 27 No. 10	25
<b>Deep Screw Mount, Steel Stud Boxes with Quick/Click</b>							
S1-22-RS*	22.5	Single gang deep. 2 Quick/Entries each end. Extra deep for dimmers, GFCIs and thermostats, yet suitable for 2 x 4 construction.	3¾	2 1/4	3⅝	11 No. 14 10 No. 12 9 No. 10	100

All boxes are UL Listed.

\*UL Classified for 2 Hour Fire Resistance.

Catalog Number	Description	Qty. Per Carton
<b>Crimping Tool for Attaching Steel Stud Boxes</b>		
CT-1	Crimping tool for attaching boxes to steel studs. Comes equipped with long and short anvils to meet most installation requirements.	1



CT-1

All devices listed on this page conform to NEMA OS2.

Screw Mount Steel Stud Boxes

## Slater® Plastic Boxes 4" Square Boxes & Covers



4SBC



RC-1



RC-2

Catalog Number	Cu. In. Vol.	Description	Dimensions (inches)			Wire Fill (AWG)	Qty. Per Carton
			L	W	D		
<b>Covers for 4" Square Boxes</b>							
4SBC	–	4" square flat blank cover - gray	4¼	4¼	N/A	–	50
4SBCW	–	4" square flat blank cover - white	4¼	4¼	N/A	–	50
RC-1*	3.2	Single gang device cover, raised ⅝"	4¼	4¼	⅝	–	100
RC-2*	5.3	Two gang device cover, raised ⅝"	4¼	4¼	⅝	–	100
<b>4" Square Boxes with Threaded Mounting Holes*</b>							
<b>NEW</b> S44-18-BAC	17.0	Shallow 4" square. Captive mounting nail each end. 2 Auto/Clamps® each end. 2 #8 mounting screws factory installed.	4¼	4¼	1¼	9 No. 14 8 No. 12 7 No. 10	50
S44-21-RAC	21.0	4" square. Captive mounting nail each end. 3 Auto/Clamps® each end, 2 on side opposite to nails. 2 #8 mounting screws factory installed.	4¼	4¼	1½	10 No. 14 9 No. 12 8 No. 10	100
S44-21-SAC	21.0	4" square. For wood and steel stud mounting. 3 Auto/Clamps each end, 2 on side opposite bracket. 2 #8 mounting screws factory installed.	4¼	4¼	1½	10 No. 14 9 No. 12 8 No. 10	50
S44-35-RAC	35.0	4" square. Captive mounting nail each end. 3 Auto/Clamps each end, 2 on side adjacent to nails. 2 #8 mounting screws factory installed.	4¼	4¼	2⅝	17 No. 14 15 No. 12 14 No. 10	50
S44-35-SAC	35.0	4" square. For wood and steel stud mounting. 3 Auto/Clamps each end, 2 on side opposite bracket. 2 #8 mounting screws factory installed.	4¼	4¼	2⅝	17 No. 14 15 No. 12 14 No. 10	50

All boxes are UL Listed.

\*UL Classified for 2 Hour Fire Resistance.



S44-18-BAC



S44-21-RAC



S44-21-SAC



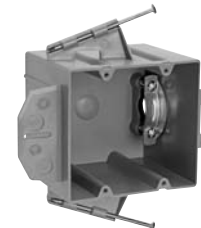
S44-35-RAC



S44-35-SAC



P2-42-SRD



P2-42-RRD

Catalog Number	Cu. In. Vol.	Description	Dimensions (inches)			Wire Fill (AWG)	Qty. Per Carton
			L	W	D		
<b>Range &amp; Dryer Boxes*</b>							
<b>NEW</b> P2-42-SRD	42.0	1/2" offset for steel stud mount only with metal cable clamp. Captive mounting screw each end.	3¾	4	4	16 No. 10 14 No. 8 8 No. 6	12
P2-42-RRD	42.0	1/2" offset for steel stud mount only with metal cable clamp. Captive mounting nail each end.	3¾	4	4	16 No. 10 14 No. 8 8 No. 6	12

All boxes are UL Listed.

\*UL Classified for 2 Hour Fire Resistance (pending).



# Slater® Plastic Boxes Contractor Packs

Pass & Seymour



Catalog Number	Cu. In. Vol.	Description	Dimensions (inches)			Wire Fill (AWG)	Qty. Per Carton
			L	W	D		
<b>Switch &amp; Outlet Boxes with Quick/Click®</b>							
S1-18-RCP*	18.0	Single gang. Captive mounting nail each end. 2 Quick/Entries® each end.	3 <sup>3</sup> / <sub>4</sub>	2 <sup>1</sup> / <sub>4</sub>	2 <sup>23</sup> / <sub>32</sub>	9 No. 14 8 No. 12 7 No. 10	24
S2-35-RACCP*	35.0	Two gang. Captive mounting nail each end. 4 Auto/Clamps® each end.	3 <sup>21</sup> / <sub>32</sub>	3 <sup>21</sup> / <sub>32</sub>	3 <sup>3</sup> / <sub>8</sub>	17 No. 14 15 No. 12 1 No. 10	8
<b>Deep Switch &amp; Outlet Boxes with Quick/Click</b>							
S1-22-RCP*	22.5	Single gang deep. Captive mounting nail each end. 2 Quick/Entries each end. Extra deep for dimmers, GFCIs and thermostats, yet suitable for 2 x 4 construction.	3 <sup>3</sup> / <sub>4</sub>	2 <sup>1</sup> / <sub>4</sub>	3 <sup>3</sup> / <sub>8</sub>	11 No. 14 10 No. 12 9 No. 10	16
<b>Wood &amp; Steel Stud Bracket Boxes with Quick/Click</b>							
S1-18-S50-CP*	18.0	Single gang. <sup>3</sup> / <sub>8</sub> " offset for wood and steel stud mounting. 2 Quick/Entries each end. For use with <sup>3</sup> / <sub>8</sub> " to <sup>5</sup> / <sub>8</sub> " wallboard.	3 <sup>3</sup> / <sub>4</sub>	2 <sup>1</sup> / <sub>4</sub>	2 <sup>23</sup> / <sub>32</sub>	9 No. 14 8 No. 12 7 No. 10	12
<b>Old Work Switch &amp; Outlet Boxes with Quick/Click</b>							
S1-18-WCP	18.0	Single gang. Swing-bracket for mounting adjusts from 1 <sup>1</sup> / <sub>4</sub> " down to <sup>1</sup> / <sub>8</sub> ". 2 Auto/Clamps each end.	3 <sup>23</sup> / <sub>32</sub>	2 <sup>1</sup> / <sub>4</sub>	3 <sup>21</sup> / <sub>32</sub>	9 No. 14 8 No. 12 7 No. 10	12

All boxes are UL Listed.

\*UL Classified for 2 Hour Fire Resistance.

Pass &amp; Seymour



## Slater® Plastic Boxes

**Angled, rugged, metal mounting bracket** safely and securely fastens fans or fixtures to the building structure.

**Auto Clamp® cable clamps molded in** — hold wire securely in box.

**Dual mounting** accepts fans or fixtures with 2.75" or 3.5" straps.

**Fan mounts directly to bracket** through box with #10-32 screws (provided).

**Phillips-head screws (#10-32 x 3")** mount the fan or fixture directly to the metal bracket.

**Large, 20.25 cubic inch capacity** for extra wiring space.

**UL Listed for fan and fixture support.**

**Depth-mounting gauge** at bottom of bracket helps you align the box at the proper depth relative to the ceiling.

**Ringed nails for tighter grip.**

S1-20-JFAN

**Constructed of impact-resistant Noryl® thermoplastic**, making it virtually unbreakable and non-conductive.

# Slater® Plastic Boxes

## 4" Round Ceiling Boxes

With Dual Threaded Mounting Holes

Pass & Seymour



**Easy installation.** One #10 x 1¼" screw holds the box at rough in. Two factory-supplied #10 x 2" screws secure the fan or fixture through the box, directly to the joist.

**UL Listed for fan and fixture support.**

**Mounts directly under a joist or on a joist cross member.**



S1-16-FAN

**Impact-resistant Noryl®** means no ground wiring as with metal boxes.

**Screw lock** holds screws in box until needed. No lost hardware and no broken spiral saw bits.

Catalog Number	Cu. In. Vol.	Description	Dimensions (in.)		Wires (AWG)	Qty. Per Carton
			Dia.	Depth		
<b>Fan Boxes – Fan &amp; Fixture Rated*</b>						
S1-20-JFAN	20.25	Ceiling Fan Box – Premium Grade with integral fan mounting bracket and 4 Auto/Clamps®. UL listed for fans up to 70 lbs./fixtures up to 150 lbs.	4	2⅞	10 No. 14 9 No. 12 8 No. 10	12
S1-20-BFAN	20.25	Ceiling Fan Box – Construction Grade with 4 Auto/Clamps. UL listed for fans up to 70 lbs./fixtures up to 70 lbs.	4	2⅞	10 No. 14 9 No. 12 8 No. 10	30
<b>NEW</b> S1-20-RFAN	20.25	Ceiling Fan Box – Standard Grade 4 Auto/Clamps with 2 captive mounting nails. UL listed for fans up to 35 lbs./fixtures up to 50 lbs.	4	2⅞	10 No. 14	30
<b>4" Round Direct Mount Ceiling Fan Boxes – Fan &amp; Fixture Rated**</b>						
<b>NEW</b> S1-16-FAN	16	Ceiling Fan Box – with Direct Mount. UL Listed for fans up to 70 lbs, fixtures up to 210 lbs.	4	2¾	8 No. 14 7 No. 12 6 No. 10	12
<b>NEW</b> S1-09-FAN	9	Ceiling Fan Box – with Direct Mount. Suitable for single or double joist. UL Listed for fans up to 70 lbs, fixtures up to 210 lbs.	4	2¾	4 No. 14 4 No. 12 3 No. 10	12



S1-20-JFAN



S1-20-BFAN



S1-20-RFAN

All boxes are UL listed.

\*UL Classified for 2 Hour Fire Resistance (\*\*pending).

Dual mounting accommodates both 2.75" and 3.5" fixtures.



S1-09-FAN



S1-16-FAN

Catalog Number	Description	Qty. Per Carton
<b>Covers for 4" Round Boxes</b>		
4RBC	4" round flat blank cover - gray	50
4RBCW	4" round flat blank cover - white	50



4RBC

All devices listed on this page conform to NEMA OS2.

Pass &amp; Seymour



# Slater® Plastic Boxes 4" Round Ceiling Boxes

With Dual Threaded Mounting Holes



S1-20-RAC



S1-20-RGAC



S1-20-JAC



S1-20-JGAC



S1-20-HAC



S1-20-HGAC



S1-20-RACS

Catalog Number	Cu. In. Vol.	Description	Dimensions (in.)		Wires (AWG)	Qty. Per Carton
			Dia.	Depth		
<b>Ceiling Boxes – Fixture Rated for 50 lbs.</b>						
S1-20-RAC	20.25	4" round. 2 captive mounting nails. 4 Auto/Clamps.	4	2 $\frac{3}{16}$	10 No. 14 9 No. 12 8 No. 10	50
S1-20-RGAC	20.25	4" round with ground lug. 2 captive mounting nails. 4 Auto/Clamps.	4	2 $\frac{3}{16}$	10 No. 14 9 No. 12 8 No. 10	50
S1-20-JAC	20.25	4" round. J-bracket with 2 captive mounting nails. 4 Auto/Clamps.	4	2 $\frac{3}{16}$	10 No. 14 9 No. 12 8 No. 10	50
S1-20-JGAC	20.25	4" round with ground lug. J-bracket with 2 captive mounting nails. 4 Auto/Clamps.	4	2 $\frac{3}{16}$	10 No. 14 9 No. 12 8 No. 10	50
S1-20-HAC	20.25	4" round. Bar-hanger adjusts to 16" or 24" joist spacing. 4 Auto/Clamps.	4	2 $\frac{3}{16}$	10 No. 14 9 No. 12 8 No. 10	50
S1-20-HGAC	20.25	4" round with ground lug. Bar-hanger adjusts to 16" or 24" joist spacing. 4 Auto/Clamps.	4	2 $\frac{3}{16}$	10 No. 14 9 No. 12 8 No. 10	50
S1-20-RACS	20.25	4" round. 2 captive mounting screws, 4 Auto/Clamps.	4	2 $\frac{3}{16}$	10 No. 14 9 No. 12 8 No. 10	50

All boxes are UL listed.

UL Classified for 2 Hour Fire Resistance.

Dual mounting accommodates both 2.75" and 3.5" fixtures.

# Slater® Plastic Boxes Round Ceiling Boxes

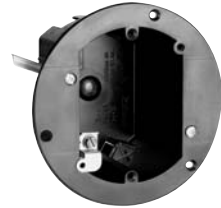
Pass & Seymour



Catalog Number	Cu. In. Vol.	Description	Dimensions (in.)		Wire Fill (AWG)	Qty. Per Carton
			Dia.	Depth		
<b>3¾" Round Old Work Ceiling Boxes – Fixture rated for 20 lbs.</b>						
C1-18-WAC	18.0	3¾" round. Swing brackets for mounting adjust from 1¼" down to ½". 4 Auto/Clamps®. Includes device mounting holes.	3¾	2 <sup>1</sup> / <sub>16</sub>	9 No. 14 8 No. 12 7 No. 10	50
C1-18-WGAC	18.0	3¾" round. With grounding lug. Swing brackets for mounting adjust from 1¼" down to ½". 4 Auto/Clamps. Includes device mounting holes.	3¾	2 <sup>1</sup> / <sub>16</sub>	9 No. 14 8 No. 12 7 No. 10	50
<b>3¾" Round Old Work Ceiling Boxes – Fixture rated for 8 lbs.</b>						
C1-18-WACX	18.0	3¾" round. Same as C118WAC, except without swing brackets, for screw mounting into OSB or plywood. 4 Auto/Clamps.	3¾	2 <sup>1</sup> / <sub>16</sub>	9 No. 14 8 No. 12 7 No. 10	50
C1-18-WGACX	18.0	3¾" round. Same as C118WGAC, except without swing brackets, for screw mounting into OSB or plywood. 4 Auto/Clamps.	3¾	2 <sup>1</sup> / <sub>16</sub>	9 No. 14 8 No. 12 7 No. 10	50



C1-18-WAC



C1-18-WGAC



C1-18-RAC

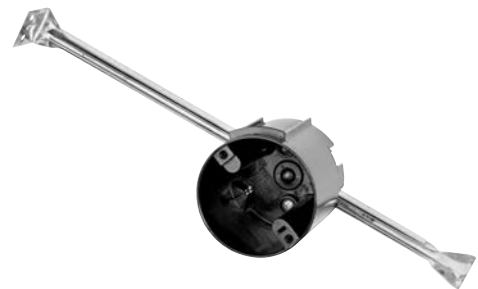


C1-18-RGAC

<b>3¾" Round Ceiling Boxes – Fixture Rated for 50 lbs.</b>						
C1-18-RAC*	18.0	3¾" round. 2 captive mounting nails. 4 Auto/Clamps.	3¾	3 <sup>5</sup> / <sub>32</sub>	9 No. 14 8 No. 12 7 No. 10	50
C1-18-RGAC*	18.0	3¾" round with ground lug. 2 captive mounting nails. 4 Auto/Clamps.	3¾	3 <sup>5</sup> / <sub>32</sub>	9 No. 14 8 No. 12 7 No. 10	50
C1-18-HAC*	18.0	3¾" round. Bar-hanger adjusts to 16" or 24" joist spacing. 4 Auto/Clamps.	3¾	3 <sup>5</sup> / <sub>32</sub>	9 No. 14 8 No. 12 7 No. 10	50
C1-18-HGAC*	18.0	3¾" round with ground lug. Bar-hanger adjusts to 16" or 24" joist spacing. 4 Auto/Clamps.	3¾	3 <sup>5</sup> / <sub>32</sub>	9 No. 14 8 No. 12 7 No. 10	50



C1-18-HGAC



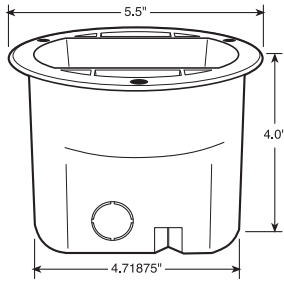
C1-18-HAC

Pass & Seymour

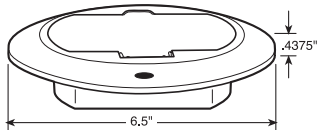


# Plastic Boxes Floor Box Assembly

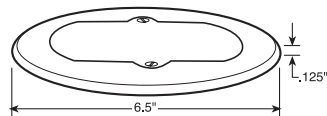
2 Pole, 3 Wire Grounding 15A, 125V



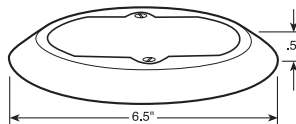
TM1542-BOX



TM1542-LA\*

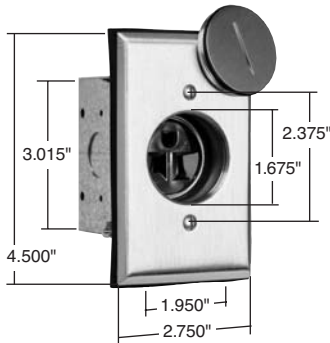


TM1542-FM

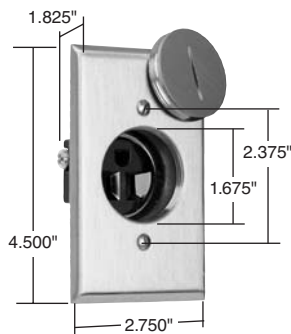


TM1542-CF

\*See available colors at left.



1542-FBA



1542-DR

### Features

- Hinged door is removable and easily replaceable.
- Durable construction, impact and scratch resistant PVC construction.
- Standard Decorator opening that accepts GFCI, TVSS, DataCom or other Decorator devices.
- Auto/Clamps® and knockouts on both sides of box.
- Meets UL514(c) scrub water exclusion test.
- Threaded device mounting holes.
- Simple mounting box, fits into a 4-3/4" hole and mounts with 3 screws included.
- Ready for low-voltage wiring, drill guides on underside of cover.
- UL and CUL Listed.
- Captive screws on TM1542 series – screws will not be lost – new.
- Made in USA.

Catalog Number	Description	Color	NEMA Config. No.
<b>Floor Box</b>			
TM1542-BOX	38 cu. in., with knockouts and Auto/Clamps®, 3 screws for mounting to floor.	Gray	5-15R
<b>Thermoplastic Covers</b>			
TM1542-W	Includes 15A, 125V Decorator receptacle, matching detachable and replaceable hinged door; threaded device-mounting holes; drill guides for low-voltage poke-through holes; accepts any Decorator device; mounts on carpeting, hardwood, linoleum, tile floors; 4 mounting/leveling screws.	White	5-15R
TM1542-BR		Brown	5-15R
TM1542-GRY		Gray	5-15R
TM1542-N		Paintable Gray	5-15R
TM1542-BK		Black	5-15R
TM1542-LA		Light Almond	5-15R
<b>Brass Covers</b>			
TM1542-FM	Low-profile cover requires minimum 3/8" hardwood floor thickness.	Brass	5-15R
TM1542-CF	High-profile cover fits any floor finish – including carpeting, linoleum, tile, etc. Both covers include a Brown 15A, 125V Decorator receptacle and will accept any Decorator device. Covers include captive screws to prevent loss.	Brass	5-15R

UL listed in accordance with 314.27(e).

### Features

- Solid brass covered plate with matching flush fitting brass cap.
- 15A, 125V receptacle made of durable thermoplastic.
- UL and FSUL listed.

Catalog Number	Rating A. V.	Description	Color	NEMA Config. No.
<b>Floor Box Assembly</b>				
1542-FBA	15 125	Receptacle, brass plate, plug, gasket, O-ring, and metal 18 cu. in. box	Brown	5-15R

UL listed in accordance with 314.27(e). Conforms to NEMA OS2.

### Display Receptacle

1542-DR	15 125	Receptacle, brass plate and plug	Brown	5-15R
---------	--------	----------------------------------	-------	-------

UL listed in accordance with 314.27(e) exception.

**2005 National Electrical Code® Section 314.27(e) Floor Boxes** Boxes listed specifically for this application shall be used for receptacles located in the floor. Exception: Boxes located in elevated floors of show windows and similar locations where the authority having jurisdiction judges them to be free from physical damage, moisture, and dirt. Receptacles and covers shall be listed as an assembly for this type of location. The products used in this application are identified as display receptacles.

# Slater® Plastic Boxes Applications

Pass & Seymour

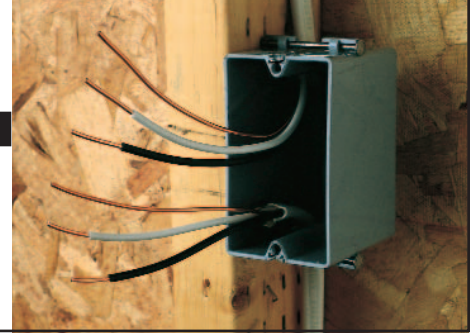


## Application

Slater Plastic Boxes, the Contractor's Choice designed with unique labor-saving features, include a complete range of wall, ceiling, and old work boxes for commercial and residential construction applications.

## UL Classified

All Slater Plastic Boxes are Underwriters Laboratories Listed. Slater Plastic Boxes shown that are UL Classified for Fire Resistance meet the requirements of UL263 and have a two hour fire resistance rating. These boxes may be used in fire resistant walls and ceilings. Installation information for Slater Plastic Boxes Classified for Fire Resistance may be found in the UL Fire Resistance Directory under category CEYY for Pass & Seymour/Legrand.



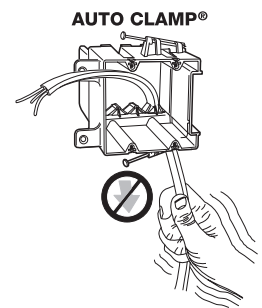
## Product Features

### Exclusive Auto/Clamp®

**Eliminates the need for separate cable clamps as well as the tools usually needed for installation.**

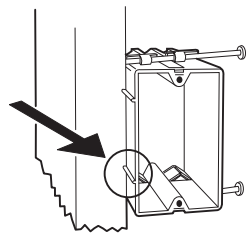
Auto/Clamp is available on all multigang boxes, old work boxes, 4" square boxes, and 3-1/4" and 4" round ceiling boxes. A major installation advantage with Auto/Clamp is that the clamp is molded as an integral part of the box (there are no separate clamps and screws to install, adjust or tighten). Each cable opening contains an Auto/Clamp, therefore, the non-metallic sheathed cable may be inserted where needed or where most convenient. Auto/Clamp does not take up as much room as conventional clamps, allowing more room for wire and devices – another important feature.

To install the cable, insert stripped or unstripped non-metallic wire into the Auto/Clamp opening and pull through to the desired length. The cable is automatically secured and the installation is complete. There are no other operations for the electrician to perform. Contractors can look forward to saving time and money with every Auto/Clamp plastic box installation.



### Location Ribs

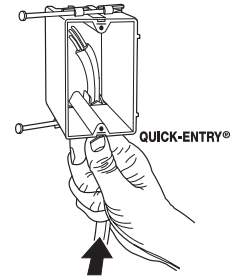
**Location Ribs enable the installer to quickly and accurately maintain a 1/2" offset.** Dual ribs also make it easy to keep the face of the box parallel to the stud. The ribs are .450" long to reduce the chance of the box protruding beyond the 1/2" sheetrock. They project .080" to span the rounded edges of wood studs but will not cause excessive canting of the box when used with thinner wallboard.



### Quick/Entry®

**Speeds installation by eliminating need for tools**

Another time-saving idea is Quick/Entry, a method that allows you to push stripped or unstripped non-metallic cable into a single gang plastic box without removing knock-outs. Jagged edges usually formed in other boxes are eliminated. Staple wire to stud within 8" of the box [per NEC 314.17(c)] to complete installation.



### Quick/Click®

**Fast, easy, and secure installations.**

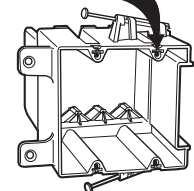
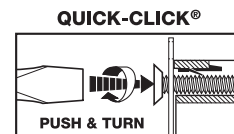
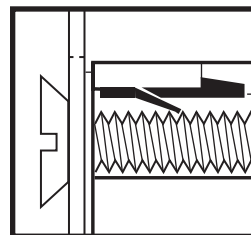
The unique, labor-saving Quick/Click design secures the wiring device quickly and easily. Simply push in the mounting screws with a screwdriver and turn the screw one turn.

**With Quick/Click you cannot cross-thread or strip a device mounting screw.**

**Wall boxes are tested for a minimum 100 lb. total device pull-out resistance.**

### How Quick/Click Works

The **spring steel** insert for quick mounting of switches and receptacles is a unique patented feature. (Refer to illustration.) Note how the spring acts as a locking ratchet and allows the screw to be pushed in and then tightened. The screw can only be released by unscrewing it in the conventional fashion.



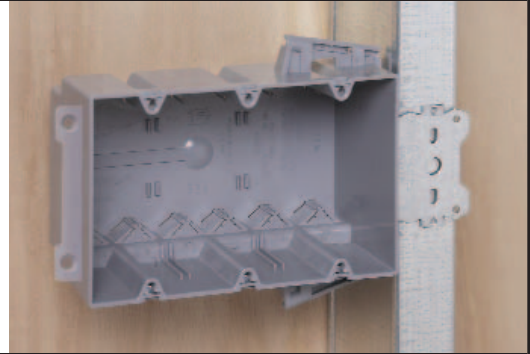
## Slater® Plastic Boxes Applications & Product Features

### Wood & Steel Stud Bracket Boxes

#### Application

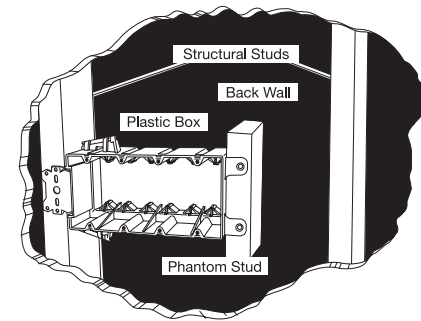
Single, two, three, four gang and 4" square wood and steel stud boxes feature Quick/Click®, the labor-saving device that assures quick and dependable installation of switches and receptacles. These high-impact thermoplastic boxes can be mounted quickly to steel or aluminum studs using the CT-1 Crimping Tool. They can also be mounted to wooden studs with common nails or screws.

On the single, two, three and four gang steel stud boxes, a steel mounting bracket is provided for mounting to the structural stud. The non-mounting side of the two and four gang box has provisions for attachment to a short section of stud (phantom stud), as shown in the illustration below, to give additional rigidity to the installation. This assembly may also be used without the phantom stud as a positioning tab to automatically realign the box to the wallboard surface. The brackets are 3/8" offset to accommodate 3/8" to 5/8" thick wallboard.



#### Features

- Available in single, two, three, four gang and 4" square boxes. Two, three and four gang boxes and 4" square include exclusive Auto/Clamp® feature.
- Single gang include Quick/Entry® feature.
- Quick/Click feature offers fast and dependable installation of devices (single, two, three and four gang).
- Unique offset tab assures proper alignment to wall face. Available with 3/8" offsets.
- Can be used for steel, aluminum, or wooden studs. Can be installed on steel studs with most standard crimping tools in addition to CT-1 Crimping Tool.
- Molded of high-impact thermoplastic.



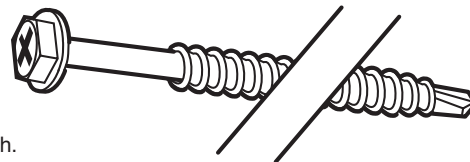
### Screw Mount: Steel Stud Boxes

#### Application

Single, deep single, two, three, four gang, and 4" round ceiling boxes come with combination Hex/Phillips washer head screws. They are designed to save labor and speed installation in steel stud construction. These innovative boxes are an alternative to bracket boxes, and can also be used on wood studs. The specially designed drill point on the screw rapidly penetrates medium gauge steel studs to securely fasten the box. Locator ribs 0.450" long help align the box on the stud and insure correct mounting depth.

#### Features

- Available in single, single deep, two, three and four gang, and 4" round ceiling boxes.
- All multi-gang and ceiling boxes include exclusive Auto/Clamp feature.
- Single gang include Quick/Entry feature.
- Specially designed drill point rapidly penetrates medium gauge steel studs.
- Screws have combination Hex/Phillips washer heads.
- Quick/Click feature on wall boxes offers fast and dependable installation of devices.
- Can be used for steel, aluminum, or wood studs.
- Molded of high-impact thermoplastic.
- Locator ribs ensure proper alignment on stud and proper offset depth.

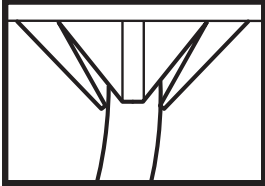




# Slater® Plastic Boxes Applications & Product Features

Pass & Seymour



Old Work Boxes	Features
Application	
Old Work Boxes provide fast, easy installation of an electrical device in a finished (dry walled) area where no box existed before. Old Work Boxes include the Auto/Clamp® and Quick/Click® features for convenient, labor-saving installations.	<ul style="list-style-type: none"> <li>■ Box designed so mounting strap of the device, <b>with plaster ears removed</b>, fits flush, allowing use of standard depth wall plate without unsightly gap between plate and wall surface.</li> <li>■ Swing out wing brackets permit installation of box in wall with 1-1/4" thick wallboard down to 1/8" thick paneling.</li> <li>■ New longer swing brackets have greater reach to clamp onto oversized cutouts.</li> <li>■ Made of high impact thermoplastic.</li> <li>■ Combination slotted/Phillips head swing bracket screws.</li> <li>■ Include exclusive Auto/Clamp feature.</li> <li>■ Wall boxes include exclusive Quick/Click feature.</li> <li>■ Available in ceiling box versions.</li> </ul>
	

Box Volume Required			
Total Conductor Fill Count	Cubic Inches Required For		
	#14 Wire	#12 Wire	#10 Wire
1	2.0	2.25	2.50
2	4.0	4.50	5.00
3	6.0	6.75	7.50
4	8.0	9.00	10.00
5	10.0	11.25	12.50
6	12.0	13.50	15.00
7	14.0	15.75	17.50
8	16.0	18.00	20.00
9	18.0	20.25	22.50
10	20.0	22.50	25.00
11	22.0	24.75	27.50
12	24.0	27.00	30.00
13	26.0	29.25	32.50
14	28.0	31.50	35.00
15	30.0	33.75	37.50
16	32.0	36.00	40.00
17	34.0	38.25	42.50
18	36.0	40.50	45.00
19	38.0	42.75	47.50
20	40.0	45.00	50.00

In addition to counting 1 conductor fill allowance for each conductor, 1 additional allowance must be counted for all cable clamps, and 1 additional allowance for all ground conductors. 2 additional fill allowances must be counted for each device strap. See 2002 NEC Section 314.16(b). The table above defines box volume required for resulting total conductor fill count, depending on AWG used.

