



November 2015 / News Release

Duke Energy Metering Requirements

Duke Energy (and its legacy Progress Energy subsidiary) will be requiring metering equipment that meets the Meter Equipment Group (MEG) specifications beginning January 1, 2016. Included in this document is a cross reference of current metering products sold in Duke Energy territories and the new recommended "MEG approved" metering device.

Womack Electric Supply is taking all steps necessary to ensure that our inventory meets the requirements for this change. Womack Electric Supply encourages our customers to be as informed as possible regarding this change and how it may affect existing and future jobs. We suggest that contact be made with the utility having jurisdiction in your area for complete details and further clarifications.

Duke Energy – Customer Service

800.777.9898

Progress Energy – Customer Service

800.700.8744



www.womackelectric.com



Duke Energy Metering Requirements

EATON

Duke Energy (and its legacy Progress Energy subsidiary) will be requiring metering equipment that meets the Meter Equipment Group (MEG) specifications beginning January 1, 2016. Included herein is a cross reference of current Eaton products sold in Duke Energy territories and the new recommended “MEG approved” Eaton metering device.

A summary of MEG requirements is listed below:

Temporary Power Panels – All TPP’s will have to be ordered with the prefix “CHR” for ringless construction. Duke Energy has announced that TPP’s already in the field will be accepted for use and that the new “CHR” suffix will be required when units are replaced after January 1, 2016.

Single Sockets – See cross reference sheet for the new recommended “MEG approved” Eaton device.

Meter Breakers – See cross reference sheet for the new recommended “MEG approved” Eaton device. Note that some products currently purchased in Duke Energy territories are already “MEG approved,” so no change will be required.

Meter Stacks and Meter Packs – All 1MP (meter packs) and 1MM / 3MM meter stacks will need to be ordered with a “P” suffix at the end of the catalog string. (Example: 1MP4124RRLP)

General notes – Eaton “MEG Approved” products will include a sticker indicating such approval. Existing metering products installed before 1/1/16 will be approved. New “MEG Approved” products will be approved effective immediately.



MEG Territory – Duke Energy Metering Requirements

Eaton Catalog Number

Cross Reference

Single Meter Sockets

New Cat Number	Lug Kit Part Number
URS101BCPLCH	UTZRS101CFLCH
UATRS213BCH	UATRS213CFLCH
1009928CH	UATRS213CFLCH
U92197CCCPLCH	UTRS223AFLCH
U2R2332TCPLCH	UT2R2332UFLCH
UH7213TCPLCH	UTE7213UFLCH
UE7213CCPLCH	UTE7213CFLCH
UH43068TCPLCH	UTH4300TFLCH*
	ARP00129CH 600MCM ARP00118CH DUAL 250MCM ARP00427CH DUAL 350MCM ARP00429CH 600MCM/DUAL 250MCM
UH43068UCPLCH	UTH4300TFLCH*
	ARP00129CH 600MCM ARP00118CH DUAL 250MCM ARP00427CH DUAL 350MCM ARP00429CH 600MCM/DUAL 250MCM
UH43168UCPLCH	1008836CH*
	ARP00129CH 600MCM ARP00118CH DUAL 250MCM ARP00427CH DUAL 350MCM ARP00429CH 600MCM/DUAL 250MCM
UH7300UCPLCH	UTH7300TFLCH
UH7330TCPLCH	UTH7330UFLCH
UTRS101BE	UTZRS101CFLCH
UTRS213CE	UTRS213CFLCH
UTH4338UCH	1008836CH*
	ARP00129CH 600MCM ARP00118CH DUAL 250MCM ARP00427CH DUAL 350MCM ARP00429CH 600MCM/DUAL 250MCM
UTH7213UCH	UTE7213UFLCH
1008543CH	UTH7330UFLCH*
	ARP00129CH 600MCM ARP00118CH DUAL 250MCM ARP00429CH 600MCM/DUAL 250MCM
UT2R2332TCH	UT2R2332UFLCH
UT3R2332TCH	UT3R2332UFLCH

* Previous catalog number uses connectors, new catalog number use studs



Meter Breakers

CMBE3242B200BS	CMB4242B200BTS
CMBE4242B200BTS	CMB4242B200BTS
CMBE88B200BTS	CMB88B200BTS
CMB1212B200BTS	No Change
CMB1212L200BTS	No Change
CMB88B200BTS	No Change
CMBB200BTS	No Change
MBB150BTSCR	MBB150BTS
MBB200BTS	No Change
MBB200BTSCR	MBB200BTS
MBE2040B200BTS	MB2040B200BTS
MBE2040B225BTS	MB2040P200BTS
MBE24L125BTS	MB24L125BTS
MBE4040B200BTS	CMB4242B200BTS
MBE48B200BTS	MB48B200BTS
MBT48B150BTS	No Change
MBT48B200BTS	No Change
MB1212L200BTS	No Change
MB2040B200BTS	No Change
MB2040P200BTS	No Change
MB48B200BTS	No Change
MB816B200BTS	No Change
MB816P200BTS	No Change

Power Outlet Panels

CHM1G7N7NS	CHR1G7N7NS
CHM1G9N9NS	CHR1G9N9NS
CHM7N7NS	CHR7N7NS
CHM9N9NS	CHR9N9NS
CHM1G9N9NSU	CHR1G9N9NSU
CHM9N9NSU	CHR9N9NSU
CHM1G9N9NSUPR	CHR1G9N9NSUPR
CHM7N7N5GS	CHR7N7N5GS
CHR7N7NS	No Change
CHR7N7NSU	No Change
CHR9N9NS	No Change
CHR9N9NSU	No Change

House Panels

HP816P400BSL	No Change
HP404040SHL	No Change

Duke Energy Metering Requirements

TALON

Duke Energy has announced upcoming changes to the meter mounting equipment that will be required for the Duke Energy Service territory beginning January 1, 2016. Please note that these changes apply only to the Duke Energy service area- other areas remain unaffected. Duke Energy has standardized their specification for ALL of the Duke areas (including former Progress areas). The specification that Duke Energy has adopted is part of the "Metering Equipment Group" (MEG) specification that is widely used in Florida. This specification has clear differences to the items being used today. Included herein is a cross reference of current Talon products sold in Duke Energy territories and the new recommended "MEG approved" Talon metering device.

A few of the key differences are:

- Overhead only (more narrow enclosure) devices are now allowed.
- All single phase commercial sockets must have a 5th jaw in the 9:00 position
- All 320/400amp devices are now required to have 4" knock outs.

Talon is prepared for this change and has been working to provide exact equivalents to the devices traditionally used in the Duke Energy service area that meet the MEG specification. Talon has also worked with MEG to expand the list of approved products to those that may be more cost effective in certain applications.

All sockets sold on or after January 1, 2016 must meet the new specifications. Talon will be phasing in the new items over the coming months.



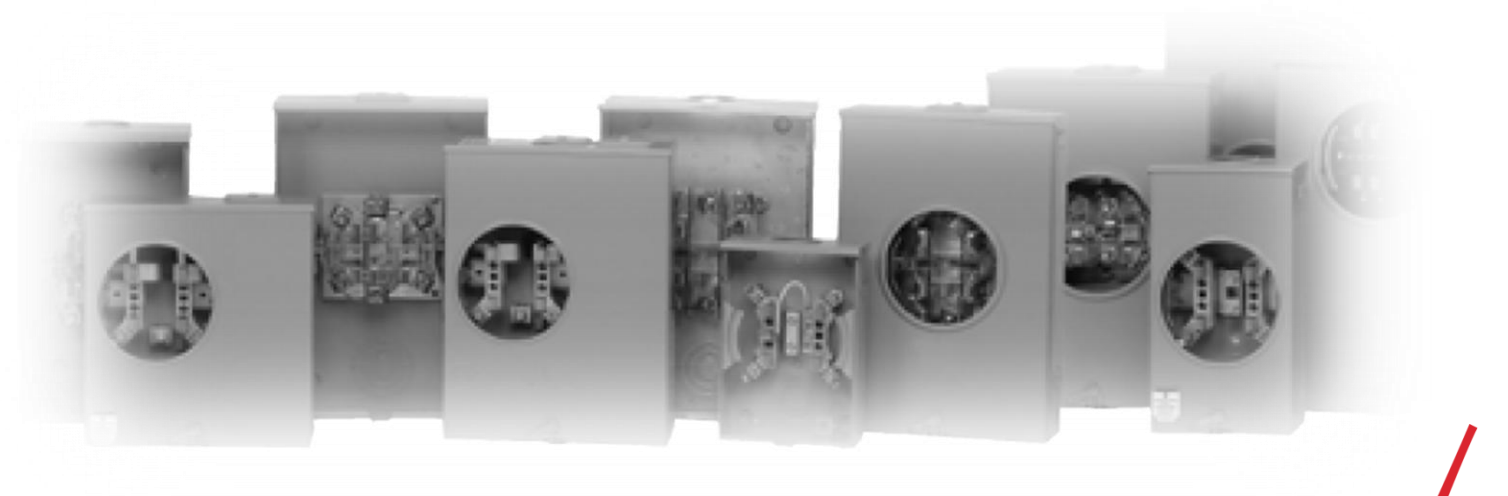
MEG Territory – Duke Energy Metering Requirements

Talon Catalog Number

Cross Reference

TALON

OLD PART NUMBER	DESCRIPTION	NEW PART NUMBER
UAT111-OJCA	125 AMP METER BASE	UAT111-XGF
UAT417-XGDU	200 AMP METER BASE	UAT417-XGF
UAS917-XJCA	200 AMP METER BASE SIDE WIRED	UAS877-PGF
40404-025	200 AMP COMMERCIAL SINGLE PHASE	40404-25F
44307-01CA	200 AMP COMMERCIAL 3 PHASE	40407-025F
48104-82CA	400/320 AMP RESIDENTIAL METER BASE 5 JAW	47305-82FL
47707-02	400/320 AMP 3PH COMMERCIAL METER BASE 7 JAW	49007-02FL
40107-02DU	400/320 AMP 3PH COMMERCIAL METER BASE 7 JAW	49007-02FL
UA2717-YJCA	2 GANG RESIDENTIAL METER BASE	UA2716-ZGF
UA3717-YJCA	3 GANG RESIDENTIAL METER BASE	UA3717-ZGF
UA4719-YJCA	4 GANG RESIDENTIAL METER BASE	UA4719-ZGF
UA5719KJCA	5 GANG RESIDENTIAL METER BASE	UA5719MGF
UA6719-KJCA	6 GANG RESIDENTIAL METER BASE	UA6719-MGF



www.womackelectric.com

