

January 22, 2019

To: Whom It May Concern

Re: Ground Bar Installation via Drill Point in Panelboard Enclosure

Requirements applied by UL to Panelboards (covered in the Standard for Panelboards, UL 67) were recently revised to specify that drilling is acceptable in a panelboard enclosure if such openings are indicated by drill points and the manufacturer provides details to address how drill points may be provided. These requirements note that drill points may be applied at the factory, by use of a template, or other equivalent means:

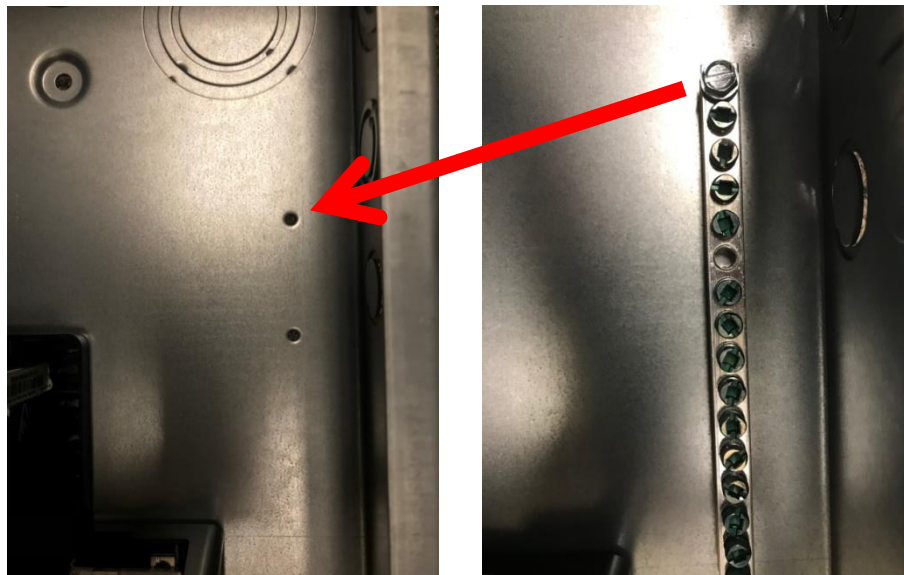
6.7 Field Installable Equipment

6.7.2 A panelboard may have provision for field-installed accessories provided the following conditions are met:

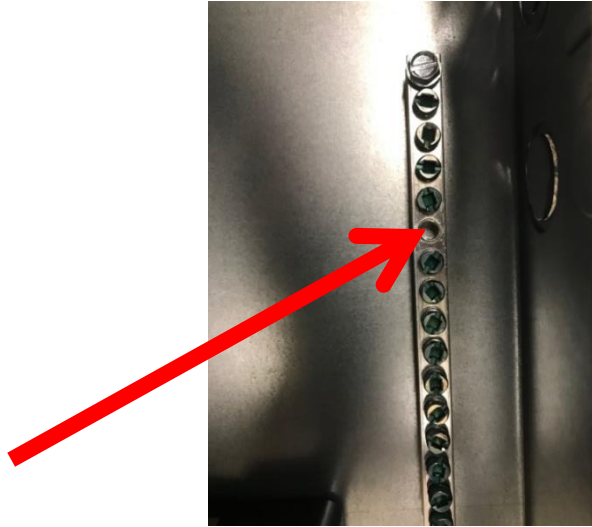
h) Drilling, cutting, or filing is acceptable in the panelboard enclosure if such openings are indicated by drill points or breakouts on the enclosure. Drill points may be applied at the factory, by a template provided with the field-installed accessory, or other equivalent means, such that the location to be drilled can be determined by the installer.

The following is the recommended installation procedure for Eaton ground bar (GBK or GBKP) kits, which are marked on the enclosed panelboard or load center as field installable accessories:

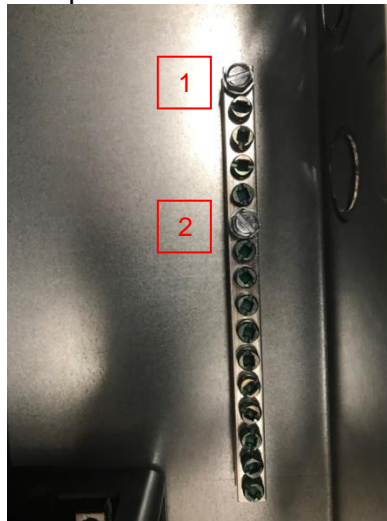
1. Ensure the panelboard (load center) is in an electrically safe work condition prior to the installation of the Ground Bar.
2. Partially thread the top screw of the Ground Bar to the hole provided in the panelboard (loadcenter) enclosure as indicated in the picture shown below.



3. With the Top Screw threaded into the enclosure, use the Ground Bar as a template by positioning it to establish the desired drilling location of the mounting hole (as shown below). Mark the desired hole location and remove the bar. Using an 11/64" drill bit, drill the mounting hole. Ensure that spacing requirements are maintained according to NEC® Table 408.56 and remove all metal shavings and debris inside the panelboard (loadcenter) enclosure.



4. Replace the grounding bar and secure both screws in the mounting holes. Torque the screw in the extruded hole (provided with the panelboard, #1 shown below) to 25 in-lbs, and torque the self-threading screw in the drilled hole (#2 shown below) to 15 in-lbs in order to properly bond and secure the Ground Bar to the panelboard enclosure.



Sincerely,

Eaton's Residential & Wiring Devices Division