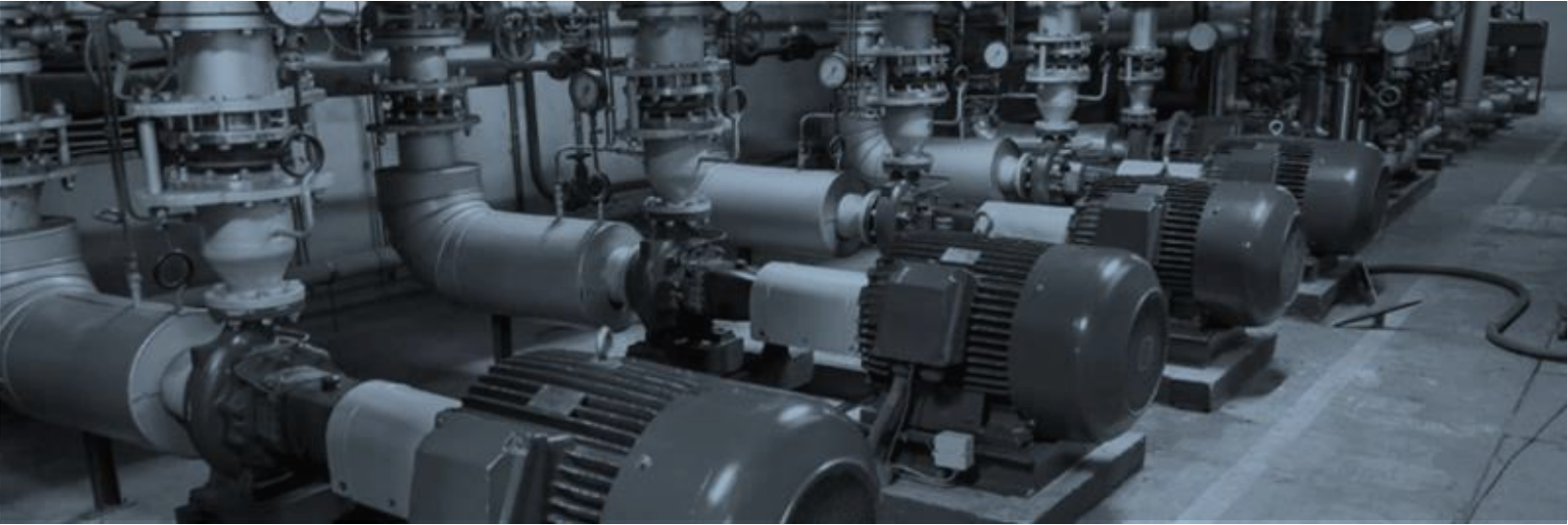




“making the Industrial Internet of Things easy to use with a fully integrated wireless sensor-to-AI-to-app solution”



## Delivers extreme value

- Increase your operational visibility
- Enhance your operational governance
- Develop data driven financial strategies
- Increase useful equipment life
- Respond before your equipment fails
- Minimize shift rounds and truck rolls
- Adjust maintenance program proactively
- Save energy and upgrade your system
- Assess quality of repair/maintenance work
- Improve team problem solving

## Edge enabled “Process in a Box™” for industrial IoT

- 5G mMTC and 4G NB-IoT compatible
- Easy to operate; simple to understand
- Works independent of your IT infrastructure
- Includes everything necessary to activate the system, from the sensor to the mobile app
- Installs anywhere within minutes
- Adds value continuously through learning
- Comes with attractive annual usage fees

## Introducing VIE’s Visibility-as-a-Service

### Easy to install on any mechanical equipment

- Generators
- Pumps, Compressors
- Motors, Fans
- Cooling Towers
- CRAC Units
- Rotating UPS, Rotating Battery Systems

**Clear Benefits**

**Breakdowns** ↓ 70%

**Downtime** ↓ 35%

---

**ROI 10x**

Source: DOE - Operation and Maintenance Best Practices, Release 3.0

# VISIBILITY IS EVERYTHING

You Can't Fix What You Can't See



## Detects

- **Install** ruggedized sensor(s) on assets
- **Collect** and process 3 axis vibration and temperature data



## Connects

- **Connect** sensors using secure long-range wireless IoT protocols
- **Standalone** – no user IT integration required



## Predicts

- **AI engine** determines asset degradation & predicts failure mechanisms.
- **Proprietary learning system** combines sensor data with technician evaluation & repair.



## Protects

- **Runtime information** presented via mobile app and dashboard.
- **Collaboration** via simple and intuitive interface improves usability.

## Simple but powerful hardware



### Sensor

- 3-axis vibration & temperature
- Wireless: BTLE. Future: LORA, NB-IoT, exclusive FCC licensed 220MHz
- 10-year built-in battery life

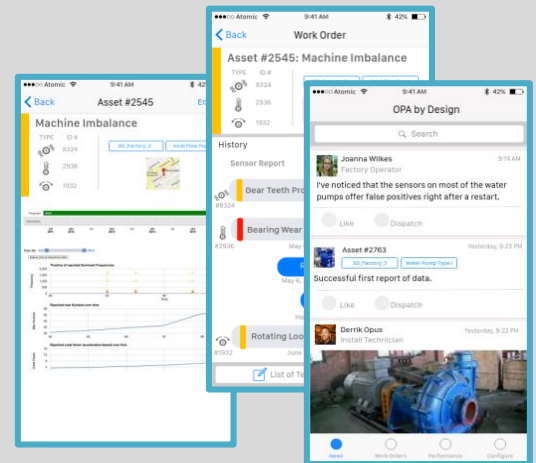


### Wireless Gateway

- Connects 100+ sensors
- Backhaul: cellular or satellite
- 120V or 240V AC powered
- Enterprise grade AES encryption

## Intuitive management interface

- **Simple** and intuitive configuration of deployed sensors.
- **Actionable information** and prediction feed. Both technicians and sensor devices participate.
- **Closed loop ticketing** process: generation, scheduling, assessment, repair, and closing.
- **Detailed health history** per sensor, machine, and system.
- **Learning**, global and local, with/without operator feedback.
- **Adaptable and customizable** to customer requirements.



[www.vietechnologies.com](http://www.vietechnologies.com)  
[info@vietechnologies.com](mailto:info@vietechnologies.com)  
Call: 951-364-4649

**About VIE Technologies** – established in 2016 by a leading group of technology industry veterans, VIE Technologies is focused on bringing true value to the emerging Industrial IoT space by creating end-to-end solutions that address today's real-world industrial problems. VIE Technologies is headquartered in San Diego, CA, with offices in China and India. **Do you have the visibility you need? We Can Help.**